

# MINT **ERROR** NEWS<sup>TM</sup> MAGAZINE

Bringing the latest mint error news to the collector. Also featuring Die Trials, Test Pieces, Numismatic Rarities, Currency Errors and Discoveries from the U.S. Mint & the BEP.



[minterrornews.com](http://minterrornews.com)

## PCGS Certifies Unique 1990-D Lincoln Cent **TRANSITIONAL** Struck on a 3.1 gram Copper Planchet

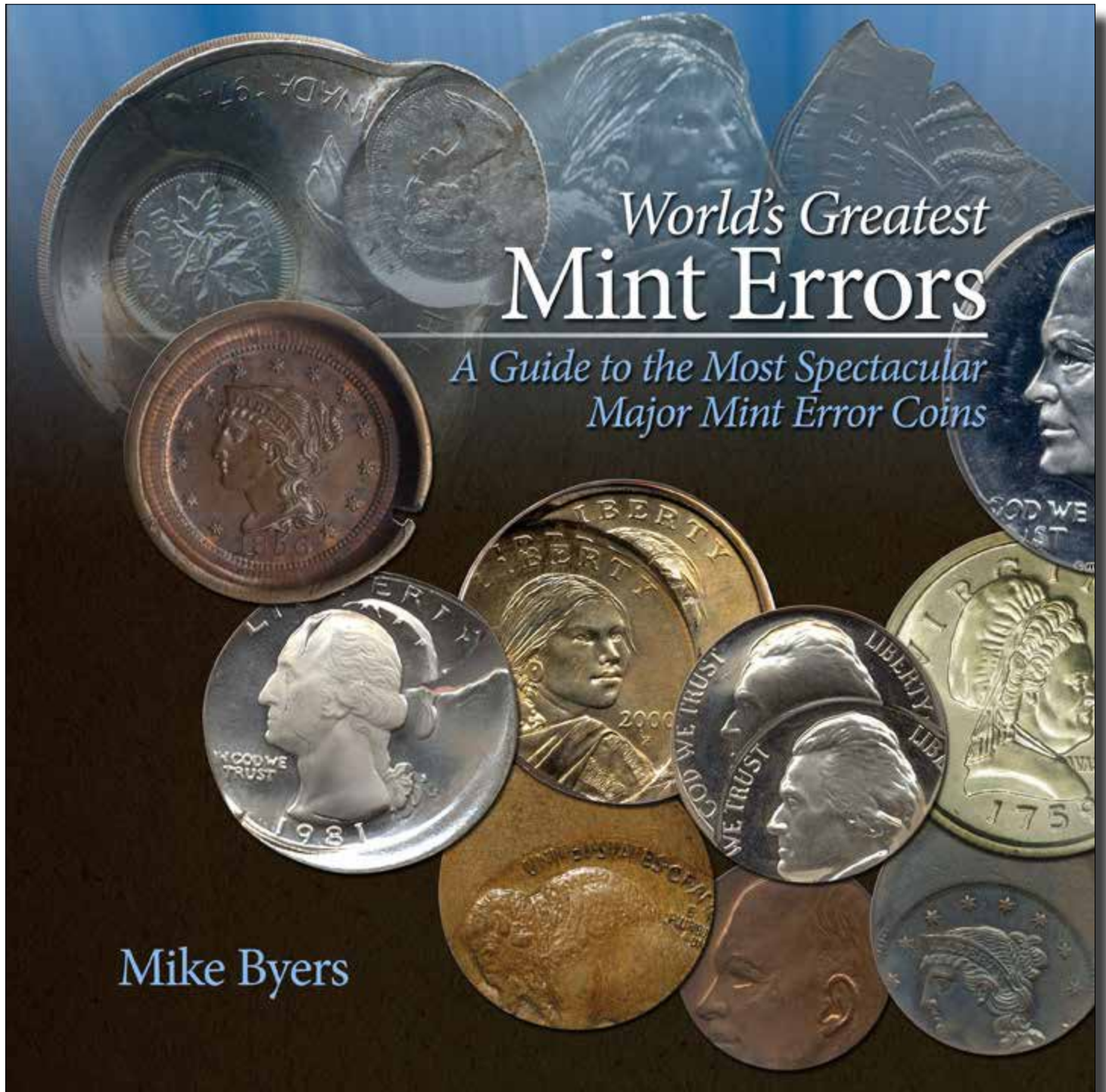
(Pre-1983 Cent Planchet)



21 Page  
Price Guide  
Inside!

Issue 36 • Spring 2016  
A Mike Byers Publication

Now Available From Amazon.com and Zyrus Press



# *World's Greatest* Mint Errors

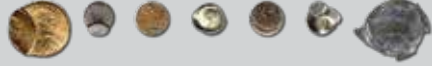
*A Guide to the Most Spectacular  
Major Mint Error Coins*

Mike Byers



# MINT ERROR NEWS MAGAZINE

Bringing the latest mint error news to the collector.



Issue 36 • Spring 2016

Publisher & Editor  
**Mike Byers**

Production Editor  
**Sam Rhazi**

Contributing Editors  
**Andy Lustig**  
**Fred Weinberg**

Contributing Writers  
**Heritage Auctions**  
**Jon Sullivan**  
**NGC**

## Advertising

The ad space is sold out. Please e-mail [editor@minterrornews.com](mailto:editor@minterrornews.com) to be added to the waiting list.

## Subscriptions

We are not offering a paid subscription at this time. Issues of Mint Error News Magazine are mailed to our regular customers and coin dealers that we are associated with. Issues can be downloaded for free at [minterrornews.com](http://minterrornews.com)

*Mint Error News* is the official publication of [minterrornews.com](http://minterrornews.com). All content Copyright 2016 *Mint Error News*. All rights reserved. No part of this magazine may be reproduced in any form without the expressed written permission of the publisher. Opinions expressed in this publication do not necessarily represent the viewpoints of *Mint Error News*. This publication is distributed with the understanding that the information presented herein is from various sources for which there can be no warranty or responsibility by the publisher as to accuracy, price or completeness. *Mint Error News* accepts unsolicited manuscripts, artwork, and photographs for publication. Direct editorial submissions to [editor@minterrornews.com](mailto:editor@minterrornews.com). All unsolicited material will not be returned.

PRINTED IN THE U.S.A.

# Mint Error News Magazine

Issue 36 • Spring 2016

## - Table of Contents -

Mike Byers' Welcome	4
PCGS Certifies Unique 1990-D Lincoln Cent TRANSITIONAL Struck on a 3.1 gram Copper Planchet (Pre-1983 Cent Planchet)	5
A Collection of American Eagle Errors	10
Using Auction Prices Realized For Error Coins	18
1943-S Bronze Cent, Second-Finest Known, AU58 From the Bob Simpson Collection Sells For \$282,000.00	22
(16) Proof 40% Silver Ike Dollar Planchets Including PCGS Discovery Coin Discovery Group of 15 NGC Certified Blanks From The San Francisco Hoard	26
(12) Proof Clad Ike Dollar Planchets Including 2 NGC Discovery Coins Discovery Group of 10 NGC Certified Blanks From The San Francisco Hoard	34
Prices Realized In The February 2016 Long Beach Heritage Auction	41
Prices Realized In The March 2016 Dallas ANA Heritage Auction	47
Mint Errors Featured In The Upcoming Central States Heritage Auction	51
PCGS Certifies Unique Proof \$100 Canada National Parks Commemorative Gold Coin Reverse Die Cap & Brockage Obverse	58
Rare Mint Error Found on a 2015 Silver Eagle	62
Fred Weinberg Price List	65
Mint Error News Price Guide (Updated April 2016)	99
Jim's Auctions	133
Mint Error News Glossary	135

# MINT **ERROR** NEWS<sup>TM</sup> MAGAZINE

Bringing the latest mint error news to the collector.



Mike Byers, Publisher & Editor, Welcomes You!

Welcome to Mint Error News Magazine, bringing the latest mint error news and information to the collector. This is our thirteenth year bringing you both an online PDF magazine and the Mint Error News website. There are over 950 articles, features, discoveries, news stories with mint error related info from the United States and around the World. Our website, [minterrornews.com](http://minterrornews.com), has become the most popular and informative Internet resource for mint errors and is read by thousands of dealers and collectors.



Mike Byers ([mikebyers.com](http://mikebyers.com)) is president of Mike Byers Inc. He has been a professional numismatist for over thirty-five years. He is one of the largest dealers handling U.S. Gold Coins, Patterns and Rarities certified by PCGS and NGC. He has handled major coin collections and attends every major coin convention. Mike Byers carries an extensive inventory as well as solicits want lists and is always looking to purchase fresh inventory and collections. You can visit Mike Byers and view his rarities at the ANA, Central States, FUN show and the Long Beach Coin Expo.



Mike Byers was a consultant to ANACS for Mint Errors from 2000 to 2006. He is also the Owner, Publisher and Editor of Mint Error News Magazine and the Mint Error News Website that was founded in 2003. In 2009, Mike Byers published his first book, *World's Greatest Mint Errors*, which received the NLG Award for Best World Coin Book and is available on [Amazon.com](http://Amazon.com).



Fred Weinberg is a highly respected numismatist, with 40 years of full time experience in the rare coin marketplace. He deals in numismatic United States Gold & Silver coinage, as well as specializing in buying & selling Major Mint Error coinage of all types. He is one of the original 31 dealers selected as an authorized P.C.G.S. (Professional Coin Grading Service) dealer at it's inception in 1986.



Andy Lustig has been dealing in U.S. and World Coins since 1975 and has attended more than 2,000 coin shows and auctions. Andy is the co-founder of the Society of U.S. Pattern Collectors ([uspatterns.com](http://uspatterns.com)). He has been a member of the Professional Numismatists Guild (PNG #614) since 2005. He is a member of NGC and was also a former grader and authenticator for PCGS.



# PCGS Certifies Unique 1990-D Lincoln Cent **TRANSITIONAL** Struck on a 3.1 gram Copper Planchet (Pre-1983 Cent Planchet)

by Mike Byers ([mikebyers.com](http://mikebyers.com))

Coin World and Numismatic News have written articles on the discovery of a few 1983 Lincoln Cents struck

on pre-1983 95 percent copper planchets (transitional mint errors).



# PCGS Certifies Unique 1990-D Lincoln Cent TRANSITIONAL Struck on a 3.1 gram Copper Planchet (Pre-1983 Cent Planchet)

---

Heritage Auctions sold a 1983-P Lincoln Cent struck on a 95 percent copper planchet in AU 55 PCGS for \$16,450 in August of 2014. A regular 1983 Cent is copper-plated zinc and weighs 2.5 grams. These 95 percent copper planchet transitional mint errors are creating tremendous interest since they are similar to the world famous 1943 Copper Cents.

Cents struck from 1963 through mid-1982 are made up of 95 percent copper and 5 percent zinc. They weigh 3.1 grams. The cents struck from mid-1982 to the present are struck on planchets made up of a solid zinc core (with a trace of copper) that are plated with pure copper and weigh 2.5 grams.

Unbelievably, here is an

authenticated, certified and graded unique transitional Lincoln Cent struck in 1990. PCGS noted on the insert that it is on a pre-1983 Cent Planchet. This transitional striking is in gem mint state condition with beautiful original copper toning. This unique mint error was previously authenticated and certified by ICG.

It is incredible that a 95 percent copper planchet was used in 1990 to strike this coin. This unique transitional is dated 7 years after the 1983 transitional mint errors and is in a class by itself. It encompasses not only the popularity of the 1983 copper transitional Lincoln Cents but also the excitement and mystique of being unique and struck by the Denver Mint 7 years later.



# PCGS Certifies Unique 1990-D Lincoln Cent TRANSITIONAL Struck on a 3.1 gram Copper Planchet (Pre-1983 Cent Planchet)

---



# PCGS Certifies Unique 1990-D Lincoln Cent TRANSITIONAL Struck on a 3.1 gram Copper Planchet (Pre-1983 Cent Planchet)

---





# MIKE BYERS INC

MIKEBYERS.COM

## U.S. & WORLD MAJOR MINT ERRORS



World's Greatest Mint Errors  
by Mike Byers

**NLG Award Winner:  
Best World Coin Book**

Mike Byers has been a professional numismatist for forty years. He is one of the largest dealers handling U.S. Gold Coins, Patterns and Rarities certified by PCGS and NGC. He has handled major coin collections and attends every major coin convention. Mike Byers carries an extensive inventory as well as solicits want lists and is always looking to purchase fresh inventory and collections.

Mike Byers was a consultant to ANACS for Mint Errors from 2000 to 2006. He is also the Publisher and Editor of Mint Error News Magazine and the Mint Error News Website that was founded in 2003. In 2009, Mike Byers published his first book, *World's Greatest Mint Errors*, which received the NLG Award for Best World Coin Book and is available on Amazon.com.

Mike Byers is a life member of ANA since 1985, a charter member of NGC and a featured dealer/member of PCGS. He is also a life member of the Central States Numismatic Society and the Florida United Numismatists. He is member A71 in the Certified Coin Exchange (CCE) and a member of CoinPlex (BYRS).



**\$150,000**

Mike Byers was born in the coin business attending coin shows since he was six years old. When he was seventeen, he issued his first coin catalog. He has been a Market-Maker in U.S. Gold Coins and a dealer in major mint errors. In 1987 he offered limited partnerships and rare coin funds. He has written articles for *The Coin Dealer Newsletter* and has been featured on the front page of *Coin World* numerous times with his numismatic rarities. Mike Byers is a contributing author on mint errors for *CoinLink & CoinWeek*. He also assisted with the mint error section of *Coin Facts* on the PCGS website. You can visit Mike Byers and view his rarities at the ANA, Central States, FUN show and the Long Beach Coin Expo.

# MIKE BYERS INC

P.O. Box 26807, LAS VEGAS, NV 89126

MIKE@MIKEBYERS.COM | 714-914-6415



LIFE MEMBER  
#3675



AUTHORIZED  
DEALER



NUMISMATIC  
GUARANTY  
CORPORATION  
OF AMERICA  
AUTHORIZED  
MEMBER/DEALER



MINT ERROR NEWS  
MAGAZINE  
Publisher & Editor

Contributor  
to  
COINWEEK



MEMBER FIRM  
Member A71



exchange  
Member  
BYRS



World's Greatest  
Mint Errors  
Author

# A COLLECTION OF AMERICAN EAGLE ERRORS

---

A reader of Mint Error News wanted to share his collection of rare American Eagle major mint errors.

**1986 Sand Disk Strike Through Reverse Highest Grade Known, Less than 8 exist.**





# A COLLECTION OF AMERICAN EAGLE ERRORS

---

**No Date Reverse Emery Sanding Disk, Highest Grade Known, Less than 20 exist.**



**1986 Obverse Emery Sanding Disk, Highest Grade Known, Less than 20 exist.**



# A COLLECTION OF AMERICAN EAGLE ERRORS

---

**1986 Sand Disk Strike Through Obverse Highest Grade Known, Less than 8 exist.**



**1987 Emery Sanding Disk Obverse, Only one to exist with retained silver.**

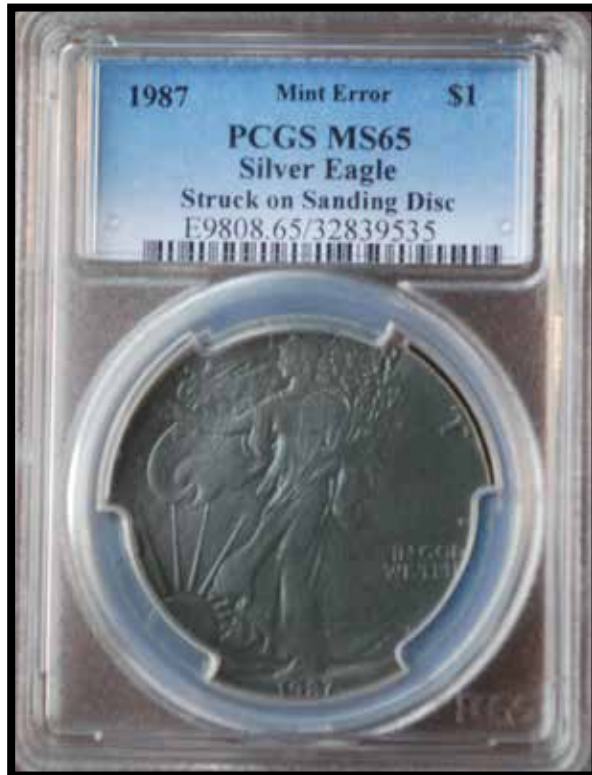




# A COLLECTION OF AMERICAN EAGLE ERRORS

---

**1987 Emery Sanding Disk Obverse, Highest Grade Known to Exist in 1987.**



**1986 Silver Eagle with Retained Emery Disk, Only One in that Exists.**

Emery was struck on obverse first then reverse. You can see the outline of Lady Liberty and "In God We Trust" outlines.



# A COLLECTION OF AMERICAN EAGLE ERRORS

---

1986 \$50 Gold Eagle Broadstruck, the only one to exist.





# A COLLECTION OF AMERICAN EAGLE ERRORS

---

2014 \$5 Gold Eagle Narrow Reed Obverse Struck Through Consecutive Error and Number Pair.



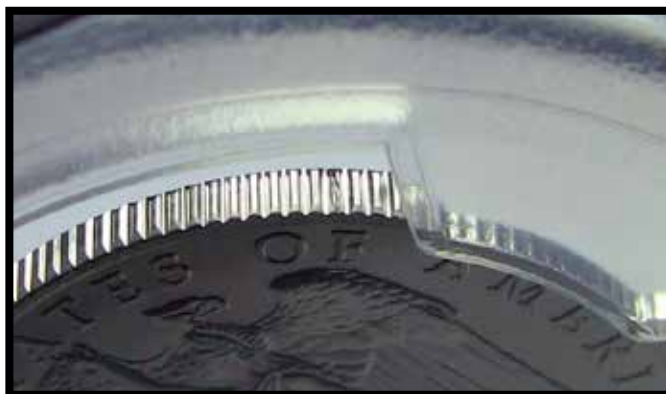
1998 Silver Eagle Wrong Planchet Error, the only one to exist.



# A COLLECTION OF AMERICAN EAGLE ERRORS

---

The mintage of this platinum eagle is just around 2,000.  
To find a high grade error, yet alone a retained one (most likely gold) is epic.





# Buying & Selling Mint Error Coins

[www.sullivannumismatics.com](http://www.sullivannumismatics.com)



# Sullivan Numismatics

PO Box 80459

Charleston, SC 29416-0459

Jon P. Sullivan

931-797-4888

[jon@sullivannumismatics.com](mailto:jon@sullivannumismatics.com)



# USING AUCTION PRICES REALIZED FOR ERROR COINS

by Jon Sullivan

**A**uction results show the price that multiple individuals bidding against each other decided a coin is worth. It's the free market at work, with demand dictating what something's value is, and the resulting high bid being the coin's value...or is it? It would be nice if it were as simple as that, but auction results can be both useful as well as misleading. Here are some points to consider when reviewing prices realized.

## **Was the Auction “Rigged”?**

Was the bidding “rigged” by the owners of the coin? Sometimes (and I've seen this happen) dealers or collectors will bid on their own coins, artificially driving the price up. This results in a false-high bid value, and would be a “price realized” that did not reflect true market value. Some dealers will even do this in order to have a high prices realized “on the books”, so that in the future, collectors or dealers who

reference this auction will incorrectly be under the impression that a coin is worth more than it actually is.

## **Thin Markets V.S. Thick Markets**

Some errors have “thin markets” and some have “thick markets” (I'm not sure if those are the correct terms, but they work for me.)

“Thick Market” coins have a high demand are much more likely to bring what they should. This is because there are so many people interested in the coin, that on any given day, there are likely to be multiple people at that auction who will want to buy the coin, and so will bid against each other and drive the price up. The result is that the coin likely will achieve a fair value or even a ridiculously high value. We have all seen this happen on eBay, and all it takes for it to happen is for 2 bidders who do not understand a coin's value, to bid against each other until one of



---

# USING AUCTION PRICES REALIZED FOR ERROR COINS

---

them drops out. The result can be a price realized which is many multiples of what the coin is actually worth on any other day of the year.

“Thin Market” coins are coins which may be very desirable, but the problem is that they only have a tiny collecting base with few people looking for them. It doesn’t mean that the coin isn’t worth X amount of dollars, but in an auction setting, the coin likely will fall well short of what it should have sold for. There may be 4 people actively looking for a rare error coin which there are only 2 known of. At an auction, it’s very possible that only 1 (if that) of those 4 collectors will be there to actively bid on that coin. The other people bidding on the coin would have no idea how rare or desirable that coin is, so they throw in a few small bids and the coin sells for “nothing” to that very happy 1 collector. If on the other hand 2 or 3 of the interested collectors had been at the auction, the coin would likely bring a very high price.

“Thin Market” coins often are difficult to price based on auction prices realized, and a knowledgeable dealer or collector would have to price the

coin based on other data, such as what the coin has brought in non-auction sales, or what similarly rare errors with a similar number of collectors are typically willing to pay for the coin.

## **Auction V.S. Dealers Prices**

A generic error coin type may have sold at auction for \$550, \$700, and \$475 over a period of 5 years, and currently a coin dealer is offering the coin for \$800. Is the coin worth \$800, or should the collector wait for an auction to buy the coin? This depends. Sometimes a dealer is simply overpriced, and you are better off finding the coin yourself since it’s a common error, and is readily available on the market. On the other hand, sometimes there are things you do not understand about those 3 prices realized, and why the dealer’s price may be a good value.

The \$550 coin had a scratch (many slabbed errors do) and some slightly odd toning which was a bit unsightly, and reduced the value.

The \$475 coin was stuck in a small auction in mid-july (when many collectors and dealers are busy with other things, and not doing coins as

---

# USING AUCTION PRICES REALIZED FOR ERROR COINS

---

much) and it somehow “slipped by” everyone and went to some lucky bidder—yes you might be able to find a coin that cheap in the future, but odds are you won’t for that particular coin.

The \$700 coin is the coin which your dealer probably purchased in the auction himself, and is now offering for \$800. It’s a nice coin, a respectable grade, and has good eye-appeal. Should you buy it? If you trust your dealer’s advice, and the dealer says it’s worth \$800, it could very likely be worth that price. You might find one on your own over the next 5 years, but by then prices may have gone up, or you may make a mistake and buy a coin which has some problem or characteristic which hurts the value, and you end up buying an inferior coin.

## **Interpreting Prices Realized**

Generally speaking, the more examples of an error coin you can find that have sold, and over as long a period of time as possible, the more you can trust that that is what the coin is worth.

The thing to remember is that coins with thin markets will usually sell for less than they “should” at auction, and

coins with “thick markets” are more likely to sell for what they’re actually worth.

You should always ignore the coins which went for extraordinarily high or low prices since they do not reflect the market for generic examples of the error type you’re looking at. Why those coins sold for high or low prices are impossible to say most of the time, and they really do not tell you anything useful most of the time, and you shouldn’t expect to sell or purchase a coin at either of those lows or highs.

If you see a trend over the last year, for example, where the error has shot up in value over what it has traditionally sold for for the last 8 years, there may be a legitimate reason for this. A new book being published, a dealer may be promoting the series and so generating increased interest, or perhaps the random event of 5 new serious collectors getting into the series at the same time all could account for much higher than average prices. The old prices of the last 8 years may no longer be relevant, and the “new prices” of the last year may be the norm for years to come.

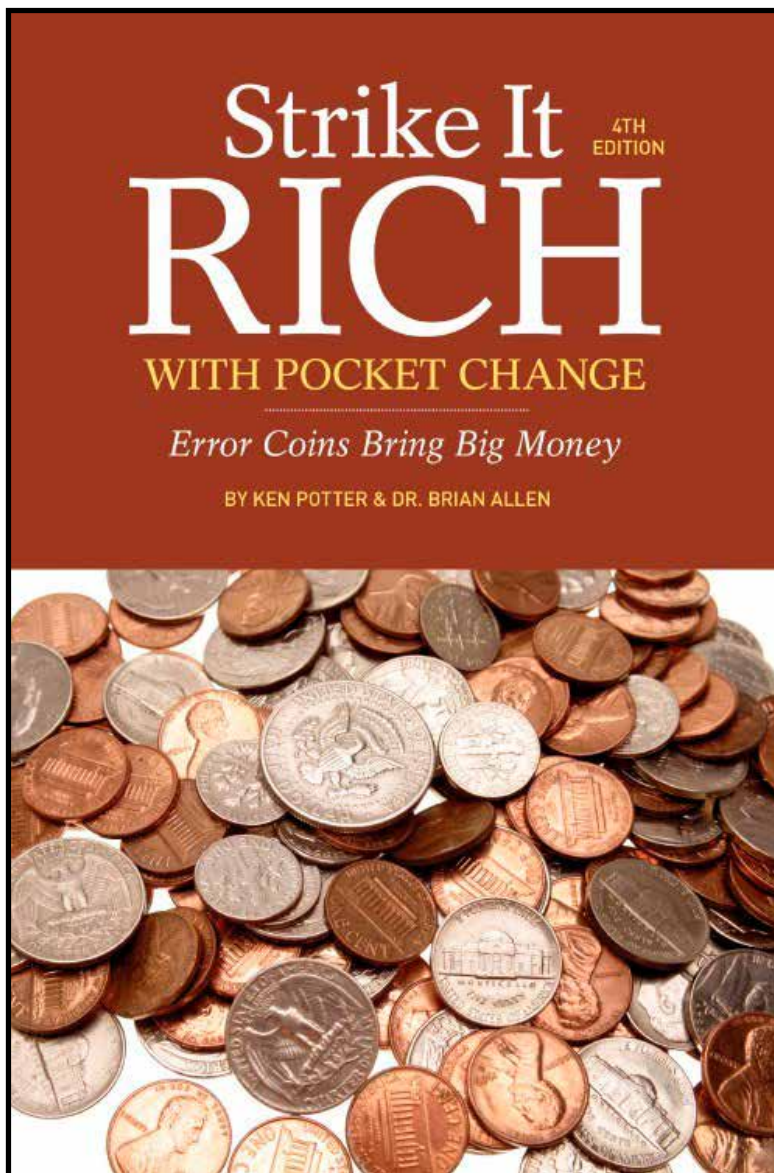
New From Krause Publications:

# Strike It Rich With Pocket Change

## *Error Coins Bring Big Money*

by Brian Allen & Ken Potter  
NEW 4th Edition

It takes a keen eye to spot them - and a little know-how - but errors on coins produced by the U.S. Mint occur every year. And these errors can be worth a fortune to coin collectors. *Strike It Rich with Pocket Change* shows the reader how to detect errors, what to look for and how to cash in on them. This book has a strong appeal for someone with a mild to dedicated



interest in coins, while drawing upon the treasure hunter in all of us - anyone who is looking for a hobby that does not require a great up-front investment, yet offers the potential of discovering valuable rarities. Any collector who has completed the standard set of a type or series now has an opportunity to broaden the scope of that collection.

**Visit [krausebooks.com](http://krausebooks.com) for more information.**



# 1943-S BRONZE CENT, SECOND-FINEST KNOWN, AU58 FROM THE BOB SIMPSON COLLECTION SELLS FOR \$282,000.00

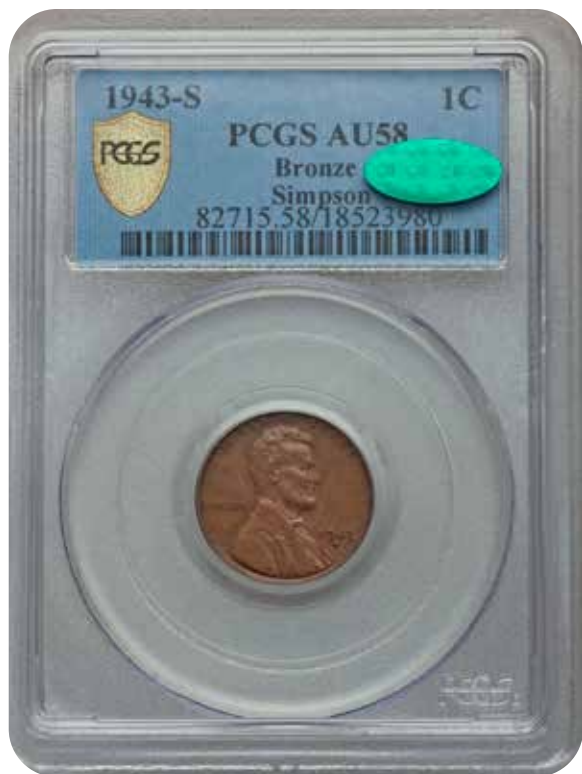
*Featured in the 2016 February 4 - 7 Long Beach Expo US Coins Signature Auction - LOT #3087*

The sale of off-metal error 1943 bronze and 1944 steel cents in our recently concluded FUN Signature (Heritage, 1/2016) was definitely one for the record books. The present cataloger (GH) had several of his own bundles of Thanksgiving joy getting to describe and write about so many monumental coins, the crème de la crème of the Lincoln cent series and true Lincoln cent “error coin royalty,” in the memorable words of NGC’s David Lange.

Whether we like it or not, change is an inevitable part of life. Even an advanced collector like Bob Simpson eventually turns his eyes in new directions. Collectors for years have been privileged to admire (or envy, or attempt to emulate, or drool over) his complete PCGS Registry Set of Lincoln Cents Off-Metal Strikes,

Circulation Strikes (1943-1944) -- each coin, incredibly, in Mint State -- which was ranked #1 (of course) for five straight years by PCGS and has been inducted into the PCGS Hall of Fame.

Bob Simpson offered half of this top-grade set -- the steel cents, as mentioned -- in our January 2016 FUN Signature in the form of a 1944 Philadelphia steel cent, MS64 PCGS (offered at \$146,875); a 1944-D steel cent, MS62 PCGS (brought \$54,050); and a remarkable 1944-S steel cent, MS66 PCGS, the finest “steelie” certified from any mint (offered at \$323,125). As we go to press with this catalog, some of those coins have sold and some are on offer at their reserve prices plus buyer’s premium.



# 1943-S BRONZE CENT, SECOND-FINEST KNOWN, AU58 FROM THE BOB SIMPSON COLLECTION SELLS FOR \$282,000.00

---

To the best of our knowledge, however, Simpson retains for the time being his complete 1943 set of Mint State bronze or “copper” cents, including a 1943 Philadelphia, MS62 Brown PCGS; 1943-D MS64 Brown PCGS; and 1943-S MS62 Brown PCGS.

The present 1943-S bronze cent from the Simpson Collection falls under the category of “duplicate,” although it is in all other respects a fine coin -- nay, an extraordinary coin, the second-finest certified 1943-S bronze cent at either service -- that would form the centerpiece of virtually any set in which it resides.

Another Simpson “duplicate” (such an ugly word for such fantastic coins), his 1943 Philadelphia bronze cent, AU58 PCGS Secure-CAC, brought \$305,500 in our January FUN Signature. The FUN January 2016 and Long Beach February 2016 Signature auctions at Heritage will undoubtedly remain among the most memorable offerings of off-metal Lincoln cents in modern numismatic history.

## Some Context Around the Bob Simpson Collection

It is likely the last numismatic understatement of the year 2015 we will make to write that Bob Simpson owns some simply amazing, staggering coins. The entire numismatic world owes him a tremendous debt of gratitude for keeping his sets open/published so that collectors of all stripes and situations can admire those wonderful coins.

To examine the various Bob Simpson Registry Sets, either active or retired, visible at PCGS is to enter a numismatic Shangri-La, to enter a world full of miraculous coins that simply shouldn't exist -- but do, each one of them in incredible TrueView images. This is a world including (currently) 60% of all the Judd patterns, a complete set of all four gold stellas of 1879-80 (and most of the pattern stellas), complete sets of 20th century gold circulation strikes, complete Barber proofs (all three denominations), four of the 10 most famous United States “ultra rarities,” complete two cents and three cent silvers, early half dimes, Capped Bust and Liberty Seated half dimes, the list goes on and on -- an amazing and bewildering array of coins, many

of them in the finest grades known. And yet, of all those incredible Registry Sets, the Lincoln Cents, Off-Metal Strikes (1943-44) is currently the only one with the PCGS Hall of Fame recognition, and it is undoubtedly among the most admired and most commented-on of all his sets.

## The Present Example, AU58 PCGS Secure-CAC, Ex: Simpson

Far more important than any technical description of this coin is its high Condition Census ranking as the second-finest 1943-S bronze cent that we can confirm through recent trades. As noted, this will remain the finest available 1943-S bronze cent unless and until Bob Simpson decides to dispose of his Registry Set of Mint State 1943-PDS bronze cents, or until the extremely unlikely appearance of another example that trumps both.

The surfaces are a light medium-tan, boasting excellent luster remaining throughout both sides despite a touch of circulation wear and some scattered detritus in the device crevices that actually serves to confirm this AU58 piece's original, uncleaned status. A diagonal (northwest to southeast) scrape through Lincoln's eye ends in the right obverse field. Obvious die polishing lines run north-northeast through the right obverse field. Bits of dark material appear in the upper loops of the 9 and 3, in the lower loop of the S mintmark, and at the upper obverse rim above the motto.

## Roster of 1943-S Bronze Cents

We can confirm only six examples of the 1943-S bronze cents certified by the two major grading and authentication services. Perhaps as many as a dozen to 15 examples survive of the 1943 Philadelphia bronze cents, while the 1943-D bronze cent, MS64 Brown PCGS, in the Simpson Collection (for which he paid \$1.7 million in 2010) remains unique, despite decades of searching on the part of thousands of collectors. The roster is based on publicized trades and public auctions; private trades may represent other examples that are unlisted here.

# 1943-S BRONZE CENT, SECOND-FINEST KNOWN, AU58 FROM THE BOB SIMPSON COLLECTION SELLS FOR \$282,000.00

---

**1. MS62 Brown PCGS Secure.** “Found in the year of issue in a Mint-sewn bag of 1943-S steel cents” by Merl D. Burcham, per its early appearances with Superior Galleries (the Superior lot description from February 1974 is reprinted in Dr. Sol Taylor’s Standard Guide to the Lincoln Cent, fourth edition [1999], page 138); later to error coin dealer Frank Spadone; part of a \$15,000 trade of “regular and pattern silver coins valued at that time [1965] between Spadone and Walter Farris of Bristol, Tennessee, per the Superior ads (and covered in a Coin World story on page 41, January 20, 1965); authenticated at some point by Walter Breen (before 1965, by which time Farris had obtained the certification); Dr. Charles L. Ruby Collection, Part I (Superior, 2/1974), lot 1991; Superior (6/1977), realized \$49,500; Dr. Jon Kardatzke Collection (Goldberg Auctions, 2/2000), lot 257, as MS61 Brown NGC, brought \$115,000; Legend Numismatics to Bob Simpson as MS62 Brown PCGS for \$1 million (9/2012); Simpson Collection. “A tiny fleck of zinc is ... lodged in the bronze, just above the 3 in the date,” according to the Goldbergs description. Some muted mint red remains. PCGS certification #25510131.

**2. AU58 PCGS.** Ex: Simpson Collection, where it resided apparently from some time before September 2012 (likely as early as late 2010) until the present. Earlier provenance uncertain. This piece became the Bob Simpson “duplicate” when he purchased a 1943-S bronze cent in MS62 Brown PCGS Secure for \$1 million in September 2012, a transaction arranged by Legend Numismatics. **The present example.** PCGS certification #18523980.

**3. AU55 PCGS Secure.** Purchased from an unspecified auction “sometime during the 1980s” and newly certified at PCGS in autumn 2015. Previously authenticated by ANACS. The Sorensen Collection / FUN Signature (Heritage, 1/2016), lot 5267, brought \$211,500. No further provenance available. PCGS certification #25653505.

**4. AU53 NGC.** Ex: Kenneth S. Wing Jr. Collection. A few light flecks on the reverse help with pedigree identification, including one on the right wheat ear, one at the left bottom of T in CENT, and one right at the

midpoint of M in UNUM. Other scattered, tiny flecks appear in the central reverse. A near-vertical tick on Lincoln’s cheekbone is the most apparent obverse mark. “Discovered within a year of its issue, this attractive specimen remained in the same family for more than 60 years,” according to its NGC Photo Proof certification and extensive documentation provided by its current owner. Found in circulation in 1944 by 14-year-old collector Kenneth S. Wing, Jr. in Long Beach, California; Kenneth S. Wing family; sold to Rare Coin Wholesalers for \$72,500 (7/2008); purchased from Park Avenue Numismatics for \$173,000 (8/2008); Kerry Rudin. NGC certification #3184796-001; formerly in a slab with NGC certification #3210930-001 (now listed as AU53/Deleted by NGC) but reholdered due to scuffs on the slab. Photographed on NGC Coin Explorer.

**5. XF45 PCGS.** From a photo in the PCGS Condition Census on CoinFacts. A small tick at Lincoln’s temple, and a hairline-thin scrape from the obverse field left of T(RUST) to a hair curl above Lincoln’s head down to the ear, are the most obvious pedigree markers. Other small ticks show in the obverse field between the bowtie and goatee, and at the rear shoulder directly down from (LIBERTY)Y. Copper spot at rear of head, below G(OD). PCGS certification #11456467.

**6. VF35 PCGS.** Dr. Carl A. Minning, Jr. Collection (Bowers and Merena, 8/1999), lot 1122, brought \$51,750; Phillip Flannagan et al. Sale (Bowers and Merena, 11/2001), lot 6076, realized \$62,100; Alfred V. Melson Collection, Part Two / Long Beach Signature (Heritage, 2/2010), lot 178, garnered \$207,000; Geyer Family Collection / New York Signature (Heritage, 11/2013), lot 3510, brought \$141,000. An abrasion runs horizontally beneath the bases of US in TRUST. Described by the 1999 Bowers and Merena cataloger as “King of the Small Cents / Nationwide Publicity Item!” PCGS certification #3457896.

## Other Appearances

Although these examples appear in the NGC Census Report, there are no public trades known for any of them, leading us to believe they may be duplications of some of the pieces above.



1943-S BRONZE CENT, SECOND-FINEST KNOWN, AU58 FROM THE BOB SIMPSON COLLECTION SELLS FOR \$282,000.00

---

**A. MS61 Brown NGC.** An example in this grade remains in the NGC Census Report. See #1 above, or this could be a duplicate.

**B. AU58 NGC.** From NGC Census Report.

**C. AU55 NGC.** From NGC Census Report.

Selections from The Bob R. Simpson Collection. (NGC ID# 22E9, PCGS# 82715)



# **(16) Proof 40% Silver Ike Dollar Planchets Including PCGS Discovery Coin Discovery Group of 15 NGC Certified Blanks From The San Francisco Hoard**

**by Mike Byers (mikebyers.com)**

For four decades, there was just one unique Proof 40% Silver Ike Dollar blank known to the numismatic community. This mint error was

certified, authenticated and encapsulated by PCGS. Fred Weinberg is the PCGS Consultant for authenticity for all mint errors submitted



# Proof 40% Silver Ike Dollar Planchets

---



to PCGS. He authenticated this unique Proof Silver Ike Dollar blank planchet.

Recently a small hoard of San Francisco major mint errors in proof and mint state were discovered. Included were these fifteen (15) proof blanks. This is exciting because it is amazing that new discoveries surface and are authenticated and become available for coin collectors to enjoy owning a part of history. Fred Weinberg stated that “these specific 15 pieces of NGC-certified 40% silver planchets, from the San Francisco Hoard, are in my opinion, proof planchets like the single PCGS certified Proof Planchet.”

Proof Ike Dollars struck in 40% Silver were issued from 1971 to 1976. This is one of the most popular U.S. Coins collected. All Proof Ike Dollars were struck, sold and shipped in official U.S Mint sealed packaging. These recently discovered proof blanks have the same pebbled surfaces that are known on U.S. proof

blanks. NGC authenticated and encapsulated these 15 blank planchets, and noted on the insert that these were from the ‘San Francisco Hoard.’

The discovery coin, a PCGS certified Proof 40% Silver Ike Dollar blank, was in Fred Weinberg’s personal collection and I recently purchased it from him. Considering that a Presidential Dollar blank with the edge lettering was also being offered by Fred Weinberg for \$8k and Silver Dollar blanks sell up to \$2k each, this unique proof silver blank was an exciting purchase.

I’m offering this unique group of 16 Proof 40% Silver Ike Dollar Planchets for the first time. This includes the PCGS discovery coin. This group is reasonably priced considering what other unique blank planchets have sold for. In addition, unique discovery mint error coins have always brought a substantial premium and this discovery coin is included in this group.



# Proof 40% Silver Ike Dollar Planchets

---

## Fred Weinberg & Co.



*Member:* Professional Numismatists Guild; Professional Coin Grading Service; Industry Council for Tangible Assets.

Since the minting of Ike Dollars in 1971, there has been only one Proof 40% Silver Planchet known. It was authenticated and certified by PCGS many years ago.

Recently, a small group of 40% Proof Ike Dollar Planchets came on the market. Until this discovery, the lone PCGS certified Proof 40% Silver Planchet had been the only one known for over 40 years.

In this group were 15 pcs. of what I consider to be Proof Type 2 40% silver planchets. They have the same "pebbled" surfaces that known proof planchets have, the result of the tumbling operation to prepare the planchets to be struck as proof coinage.

All 40% Proof Silver Ike Dollars were struck and shipped in official Mint packaging from the San Francisco Mint.

These specific 15 pieces of NGC-certified 40% silver planchets, from the San Francisco Hoard, are in my opinion, proof planchets like the single PCGS certified Proof Planchet mentioned above.

A handwritten signature in black ink that reads "Fred Weinberg". The signature is written in a cursive, flowing style.

16311 Ventura Blvd., Suite 1298, Encino, CA 91436  
(818) 986-3733 • (800) 338-6533 • FAX (818) 986-2153  
Email: [Fred@FredWeinberg.com](mailto:Fred@FredWeinberg.com) • [www.FredWeinberg.com](http://www.FredWeinberg.com)

# Proof 40% Silver Ike Dollar Planchets

---



# Proof 40% Silver Ike Dollar Planchets

---





# Proof 40% Silver Ike Dollar Planchets

This is one of the 15 Proof 40% Silver planchets certified by NGC:



# Proof 40% Silver Ike Dollar Planchets

---



# MIKE BYERS INC

MIKEBYERS.COM

U.S. & WORLD MAJOR MINT ERRORS

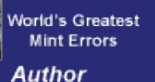
1904 \$20 Double Struck  
Rotated 180 Degrees in Collar  
NGC MS 62 CAC  
BYERS COLLECTION - UNIQUE  
\$150,000



# MIKE BYERS INC

P.O. Box 26807, LAS VEGAS, NV 89126

MIKE@MIKEBYERS.COM | 714-914-6415





# **(12) Proof Clad Ike Dollar Planchets Including 2 NGC Discovery Coins Discovery Group of 10 NGC Certified Blanks From The San Francisco Hoard**

**by Mike Byers (mikebyers.com)**

For years, there were just two Proof Clad Ike Dollar blanks known to the numismatic community. These two mint errors were certified, authenticated and encapsulated by NGC. The NGC insert certifies

these as proof blank planchets.

Recently a small hoard of San Francisco major mint errors in proof and mint state were discovered.



# Proof 40% Silver Ike Dollar Planchets

---



Included were these ten (10) proof blanks. This is exciting because it is amazing that new discoveries surface and are authenticated and become available for coin collectors to enjoy owning a part of history. Fred Weinberg, the PCGS Consultant for authenticity for all mint errors, stated that “these specific 10 pieces of NGC-certified clad planchets, from the San Francisco Hoard, are in my opinion, proof planchets like the two NGC certified Proof Planchets.”

Proof Ike Dollars struck in clad were issued from 1973 to 1978. This is one of the most popular U.S. Coins collected. All Proof Ike Dollars were struck, sold and shipped in official U.S Mint sealed packaging. These recently discovered proof blanks have the same pebbled surfaces that are known on U.S. proof blanks. NGC authenticated and encapsulated these 10 blank planchets, and noted on the insert that these were from the ‘San Francisco Hoard.’

These two discovery coins, both NGC certified Proof Clad Ike Dollar blanks, were in Fred Weinberg’s personal collection and I recently purchased them from him. Considering that a Presidential Dollar blank with the edge lettering was also being offered by Fred Weinberg for \$8k and Silver Dollar blanks sell up to \$2k each, these two discovery proof clad Ike Dollar blanks were an exciting purchase.

I’m offering this unique group of 12 Proof Clad Ike Dollar Planchets for the first time. This includes the two NGC discovery coins. This group is reasonably priced considering what other unique blank planchets have sold for. In addition, unique discovery mint error coins have always brought a substantial premium and these two discovery coins are included in this group.

# Proof 40% Silver Ike Dollar Planchets

## Fred Weinberg & Co.



*Member:* Professional Numismatists Guild; Professional Coin Grading Service; Industry Council for Tangible Assets.

Since the minting of Ike Dollars in 1971, there have been only two Proof Clad Planchets known. These were authenticated and certified by NGC.

Recently, a small group of Proof Clad Ike Dollar Planchets came on the market. Until this discovery, these two NGC certified Proof Clad Planchets have been the only two known for over 40 years.

In this group were 10 pcs. of what I consider to be Proof Type 2 clad planchets. They have the same "pebbled" surfaces that known proof planchets have, the result of the tumbling operation to prepare the planchets to be struck as proof coinage.

All Proof Clad Ike Dollars were struck and shipped in official Mint packaging from the San Francisco Mint.

These specific 10 pieces of NGC-certified clad planchets, from the San Francisco Hoard, are in my opinion, proof planchets like the two NGC certified Proof Planchets mentioned above.

A handwritten signature in black ink, appearing to read 'Fred Weinberg', is written in a cursive style.

16311 Ventura Blvd., Suite 1298, Encino, CA 91436  
(818) 986-3733 • (800) 338-6533 • FAX (818) 986-2153  
Email: [Fred@FredWeinberg.com](mailto:Fred@FredWeinberg.com) • [www.FredWeinberg.com](http://www.FredWeinberg.com)



# Proof 40% Silver Ike Dollar Planchets

---

These are the 2 discovery coins certified by NGC:



# Proof 40% Silver Ike Dollar Planchets

---



# Proof 40% Silver Ike Dollar Planchets

---

This is one of the 10 Proof clad planchets certified by NGC:





# Proof 40% Silver Ike Dollar Planchets

---



# Prices Realized In The February 2016 Long Beach Expo Heritage Auction



The following coins were in the February 2016 Long Beach Expo Signature US Coin Auction #1232.

**1943-S 1C Struck on a Bronze Planchet AU58 PCGS Secure. CAC**  
**\$282,000.00**



**2000 Lincoln Cent -- Over Struck on a 1999-P 10C, Double Denomination -- MS64 NGC**  
**\$2,820.00**





PRICES REALIZED IN THE FEBRUARY 2016 LONG BEACH EXPO HERITAGE AUCTION

1952 Washington Quarter -- Struck on a Dime Planchet, Reverse Brockage -- MS64 NGC  
\$4,700.00



Clad Quarter Webbing and Strip  
\$4,230.00



1971 Washington Quarter -- 70% Off-Center on a Philippines 10C Planchet -- MS64 PCGS  
\$998.75





PRICES REALIZED IN THE FEBRUARY 2016 LONG BEACH EXPO HERITAGE AUCTION

(2) 1999-P Roosevelt Dimes -- Matched Set -- Coin #1 MS64 PCGS and Coin #2 MS65 PCGS  
\$763.75



1981-S Proof Lincoln Cent -- Struck on a 10C Planchet, Damaged -- NGC Details. Proof.  
\$1,410.00



1966 SMS Kennedy Half Dollar -- Die Adjustment Strike -- NGC  
\$258.50



# **CONECA**

The Combined Organizations of Numismatic Error Collectors of America



**CONECA is a national numismatic organization devoted to the education of error and variety coin collectors. CONECA focuses on many error and variety specialties, including doubled dies, Repunched mintmarks, multiple errors, clips, double strikes, off-metals and off-centers -- just to name a few. It publishes an educational magazine, The Errorscope, which is printed and mailed to members bimonthly. CONECA offers a lending library, examination, listing and attribution services; it holds annual meetings at major conventions (referred to as Errorama) around the country, and offers auction services to its members. Please visit [conecaonline.org](http://conecaonline.org) and enjoy!**

#### **CONECA Variety Attribution Services**

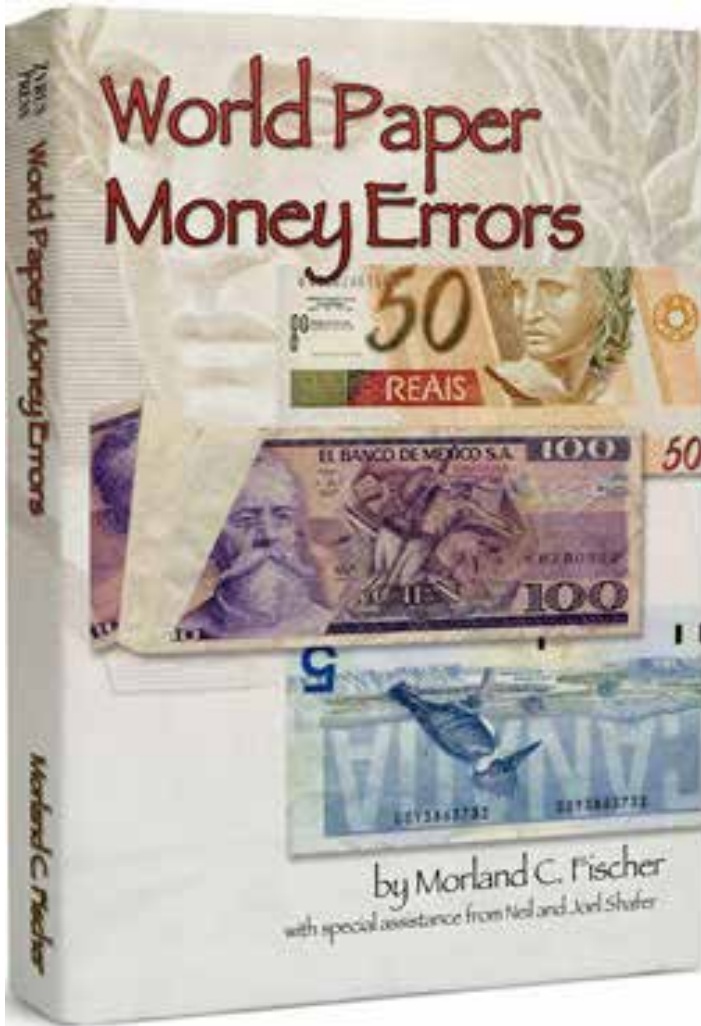
CONECA offers two attribution services. One service enables members and non-members to send their coins directly to an authorized CONECA attributer. The other service is offered through the numismatic grading firm of ICG and enables CONECA members and non-members to have their coins attributed by a CONECA attributer and then graded and slabbed by ICG.

#### **CONECA Error Examination Services**

CONECA offers two examination services. One service enables members and non-members to send coins to an authorized CONECA examiner who will return an opinion of each coin's error classification. The other service is offered through the numismatic grading firm of ICG and enables CONECA members and non-members to have their coins examined by a CONECA examiner and then graded and slabbed by ICG.

# **[conecaonline.org](http://conecaonline.org)**

# WORLD PAPER MONEY ERRORS



## World Paper Money Errors Explored!

Odd shapes, upside down prints, intriguing cuts and folds, and missing design elements are only a few of the different printing errors examined in this expansive collection on foreign error notes. World Paper Money Errors is a visually compelling avenue into the fascinating and rarely explored area of numismatics that expands on the hobby of collecting paper currency.

Author Morland Fischer's comprehensive collection reflects the attraction and advantages of exploring foreign printing errors. An overview of collecting paper money errors in today's numismatic market offers insights on the great disparity between domestic and world notes. Market values are discussed, acknowledging what variables make an error note precious in the trade. Incorporating these concepts and more, Fischer expands the method of collecting currency errors by introducing a Foreign Error Note (FEN) scale to gauge price levels based on error type.

With over 200 examples of dramatic, colorful and intriguing foreign paper money errors, collectors and spectators alike are exposed to a new form of collecting currency. The numismatic community will benefit from this thorough guide that is unlike any other on the market.

**AVAILABLE FROM [TRANSLINESUPPLY.COM](http://TRANSLINESUPPLY.COM)**

**ZYRUS  
PRESS**



# HERITAGE AUCTIONS

HA.com



**Heritage Rare  
Coin Galleries and  
Heritage Numismatic  
Auctions, divisions  
of Heritage Auctions,  
are the world's largest  
numismatic dealers  
and auctioneers.**

**HERITAGE**  
AUCTIONS

HA.com

HEADQUARTERS, 3500 Maple Ave., 17th Floor • Dallas, Texas 75219-3941  
877-HERITAGE (437-4824) • (214) 528-3500 • Fax: (214) 409-1425

These are only a sample of the thousands of error coins Heritage Auctions has handled. Consign your error coins today to the next Heritage Sale.

Look up these error coins in our Permanent Auction Archives for descriptions and full-color, enlargeable images:

A. 2003 ANA National Money Show, lot 6963  
1919 Quarter  
Struck 50% Off Center  
XF45 PCGS  
**REALIZED \$15,525**

B. 2002 September Long Beach Sale, lot 9648  
1999 SBA Dollar  
Multiple Strike, Reeded Edge  
MS65 PCGS  
**REALIZED \$6,900**

C. 2002 New York Sale, lot 7290  
1999 Cent  
Die Cap With Second Coin Bonded  
MS64 Red Uncertified  
**REALIZED \$920**

D. 2002 February Long Beach Sale, lot 7300  
Undated Struck Through  
Capped Die Indian Cent  
MS64 Brown PCGS  
**REALIZED \$1,265**

E. 2002 FUN Sale, lot 9040  
1963 Half Dollar  
Split Planchet  
AU58 Uncertified  
**REALIZED \$1,610**

F. 2001 ANA Sale, lot 8658  
1963 Half Dollar  
Double Struck, Indented by a Cent Planchet  
MS66 PCGS  
**REALIZED \$20,125**

G. 2001 ANA Sale, lot 8651  
1999-P Dime  
Bonded Strike, Struck More Than 10 Times  
MS64 Uncertified  
**REALIZED \$2,300**

H. 2001 ANA Sale, lot 8657  
1999 Mated Pair of Georgia Statehood Quarters  
Partial Collar, Indent and Stretch Strike, Indent  
MS64 Uncertified  
**REALIZED \$2,415**

I. 2001 February Long Beach Sale, lot 7497  
1912 Quarter Eagle  
Struck 5% Off Center  
MS64 NGC  
**REALIZED \$4,370**

# PRICES REALIZED IN THE MARCH 2016 DALLAS ANA HERITAGE AUCTION



*The following coins were in the 2016 March 3 - 6 ANA US Coins Signature Auction - Dallas #1233.*

**1968-S 25C Washington Quarter -- Double Struck on a Five Cent Planchet -- PR65 Cameo NGC**  
**\$2,010.43**



**1920-D 10C Mercury Dime -- Struck 13% Off-Center -- MS64 Full Bands PCGS**  
**\$1,116.25**



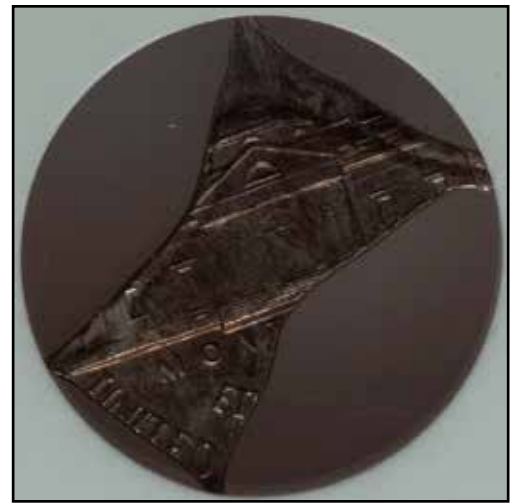


# PRICES REALIZED IN THE MARCH 2016 DALLAS ANA HERITAGE AUCTION

**1920 5C Buffalo Nickel -- Struck 30% Off-Center, Improperly Cleaned -- NGC Details AU  
\$1,057.50**



**No Date 5C Jefferson Nickel -- Struck on a Bowtie Scrap (1.0g) -- MS65 NGC  
\$940.00**



**1999 Lincoln Cent -- Two Planchet Mated Pair, Multiple Struck -- MS67 Red NGC  
\$881.25**





# PRICES REALIZED IN THE MARCH 2016 DALLAS ANA HERITAGE AUCTION

**(1959)-D 25C Washington Quarter -- Struck on a 1C Planchet (3.1g) -- MS63 Brown NGC**  
**\$705.00**



**1920 5C Buffalo Nickel -- Struck 15% Off-Center -- MS62 NGC**  
**\$705.00**



**1991 1C Lincoln Cent -- Struck on a 1991-P 10C -- MS66 NGC**  
**\$616.88**



# PRICES REALIZED IN THE MARCH 2016 DALLAS ANA HERITAGE AUCTION

1906 10C Barber Dime -- Broadstruck -- AU58 NGC

\$381.88



1983-P 25C Washington Quarter -- Struck on a 5C Planchet (5g) -- MS64 NGC

\$258.50



# uspatterns.com

The Society of U.S. Pattern Collectors is dedicated to the study of many of the rarest coins struck at the U.S. Mint: patterns, die trials and experimental pieces.



# Mint Errors Featured In The Upcoming Central States Heritage Auction



The following coins are featured in the 2016 April 27 - May 2 CSNS US Coins Signature Auction - Chicago #1234.

## No Date 1C Indian Cent -- Double Struck, Both Strikes Off-Center -- MS63 Brown NGC



## 1864 1C Indian Cent -- Struck 30% Off-Center -- MS62 Red and Brown PCGS





# MINT ERRORS FEATURED IN THE UPCOMING CENTRAL STATES HERITAGE AUCTION

**1873 1C Open 3 Indian Cent -- Struck 45% Off-Center -- XF45 NGC**



**1958 1C Lincoln Cent -- Overstruck on a Cuba Centavo -- MS65 NGC**



**1877 5C Shield Nickel -- Double Struck in Collar with Rotation -- PR65 NGC**



# MINT ERRORS FEATURED IN THE UPCOMING CENTRAL STATES HERITAGE AUCTION

**1920 5C Buffalo Nickel -- Struck 30% Off-Center -- MS62 PCGS**



**(1942-45)-P 5C Jefferson War Nickel -- Struck 40% Off-Center -- MS64 Full Steps NGC**



**1964 50C Kennedy Half Dollar -- Struck on a 25C Planchet -- MS63 PCGS**





**MINT ERRORS FEATURED IN THE UPCOMING CENTRAL STATES HERITAGE AUCTION**

**1964-D 50C Kennedy Half Dollar -- Struck on a Quarter Planchet -- MS65 NGC**



**1973-D 50C Kennedy Half Dollar -- Struck Over a 1972-D Quarter -- MS67 NGC**



**1978 \$1 Ike Dollar -- 10% Indented Strike Obverse -- MS62 PCGS**





**MINT ERRORS FEATURED IN THE UPCOMING CENTRAL STATES HERITAGE AUCTION**

**1979-P \$1 Narrow Rim Anthony Dollar -- Struck Over a Lincoln Cent -- MS64 Red NGC**



**1979-P \$1 Narrow Rim Anthony Dollar -- Struck on a 1978 Quarter -- MS66 NGC**



**(1979)-D \$1 Anthony Dollar -- Overstruck on a 1978-D Dime -- MS66 NGC**



## Saul Teichman's Want List

I am looking for the following off-metal errors:

Ike Dollar on a Nickel Planchet

State Quarter on a Dime Planchet

Bicentennial Ike on a Half Dollar Planchet

Sacagawea Dollar on a Cent Planchet

Sacagawea Dollar on a Nickel Planchet

Sacagawea Dollar on a Dime Planchet

Saul.Teichman@ey.com

# Error Coin Information Exchange

The Error Coin Information Exchange (ECIE) is a freewheeling forum dedicated to the study of error coins and varieties. Founded and hosted by veteran writer and researcher Mike Diamond, it is a great place to visit, whether you're an established collector or a novice. ECIE is not flashy and doesn't waste your time with a message board clogged with idle chit-chat. It simply provides the best information on error coins available on the web. Here you can read about late-breaking developments; find out about the newest discoveries; listen or participate in spirited debates about how error coins are produced; test your skills with periodic quizzes and brain-teasers. ECIE proudly maintains an atmosphere of skeptical inquiry. Here, no claim goes unchallenged and no theory goes untested. This is the best place to find out what kind of error you really have, how it was created, and the extent to which it is rare or unusual.

Policy Statement: By design, ECIE does not attempt to develop partnerships with dealers, grading services, or auction houses. It neither seeks, nor encourages, discounts, promotions, giveaways, or advertisements. To do otherwise would create a conflict of interest that could compromise the fierce independence and impartiality that distinguishes ECIE from all other on-line error coin clubs.

<http://groups.yahoo.com/group/errorcoininformationexchange/>



# MIKE BYERS INC

MIKEBYERS.COM

U.S. & WORLD MAJOR MINT ERRORS

## Consign Your Coins to mikebyers.com

### Terms and Conditions

We are offering this service for error collectors and dealers alike. In order to post your item on our website you must agree to the following terms and conditions.

1. All coins must be from the United States, certified by PCGS or NGC, have a minimum value of \$25,000 each and should be either Gold Coins (Pre-World War 1), Patterns or Early Type Mint Errors (Pre-1950).
2. Each item must meet our inventory criteria in terms of desirability and market value.
3. Mike Byers Inc charges a 10% Commission on each sale.
4. The minimum time for any listing is thirty days.
5. Seller agrees to a seven day return privilege from date of receipt.
6. Seller agrees to use an escrow service if requested by the buyer.
7. We reserve the right to deny or cancel any listing at any time.
8. All listing are subject to prior sale.

### Scanning Specifications

1. Scan both the obverse and reverse of the entire holder.
2. Scan with a resolution of at least 300 dpi.
3. Save the picture in jpeg format (jpg).

### Information Requirements

In addition to e-mailing a photo of your item, please include the following information:

1. Name, Address & Phone Number
2. E-Mail Address
3. Asking Price

After your item is listed, we will contact you by e-mail with any offers and questions. Once a price is agreed upon we will handle the entire sale for a 10% transaction fee, which includes all costs (eBay fees, grading fees, webmaster charges, postage and registration fees, insurance, paperwork, etc.).

If you have a collection for sale or would like to sell your duplicates and do not want to consign your coin(s), we can purchase your entire collection outright. Please contact us at [mike@mikebyers.com](mailto:mike@mikebyers.com).

# MIKE BYERS INC

P.O. Box 26807, LAS VEGAS, NV 89126

MIKE@MIKEBYERS.COM | 714-914-6415



Contributor  
to  
COINWEEK





# PCGS Certifies Unique Proof \$100 Canada National Parks Commemorative Gold Coin Reverse Die Cap & Brockage Obverse

by Mike Byers (mikebyers.com)



# PCGS Certifies Unique Proof \$100 Canada National Parks Commemorative Gold Coin Reverse Die Cap & Brockage Obverse

This unique proof die cap is more than 30% larger in diameter than a properly struck commemorative.



**T**his Canadian Gold \$100 Reverse Die Cap is the only known obverse or reverse die cap for any Canadian gold coin. The Royal Canadian Mint issued this coin in 1985. It is the \$100 National Park Commemorative Coin. The obverse depicts Queen Elizabeth II and the reverse has a bighorn mountain sheep.

After being struck, this proof gold coin adhered to the reverse die and became a reverse die cap. It subsequently struck blank planchets, creating brockages on the reverse of each coin. The obverse design of this die cap expanded with each strike.

As with any reverse die cap, the shape resembles a bottle cap. This unique gold die cap struck a large number of coins since the diameter expanded considerably. The shape of the die cap is extremely deep.

It is incredible that this dramatic gold die cap was discovered and subsequently sent to PCGS for authentication and grading. Furthermore, there is only one other known gold die cap from any country. It is an 1824 English Half Sovereign obverse die cap, which struck only two or three coins and is very shallow and slightly cupped. By comparison this proof Canadian \$100 Commemorative Gold Coin combines several major mint errors. It is a deep reverse die cap, that was struck multiple times with an expanded obverse brockage.

This is one of the rarest, most expensive and most spectacular Canadian Mint Errors known. This unique proof gold die cap rivals any U.S. Gold Mint Error in rarity, prestige and value. In fact, there are no known U.S. gold obverse or reverse die caps and only two known U.S. gold brockages.



# PCGS Certifies Unique Proof \$100 Canada National Parks Commemorative Gold Coin Reverse Die Cap & Brockage Obverse

---





# PCGS Certifies Unique Proof \$100 Canada National Parks Commemorative Gold Coin Reverse Die Cap & Brockage Obverse

---



# RARE MINT ERROR FOUND ON A 2015 SILVER EAGLE

BY NGC

*A rare curved clip mint error is found on a  
2015 American Silver Eagle bullion coin.*





## RARE MINT ERROR FOUND ON A 2015 SILVER EAGLE

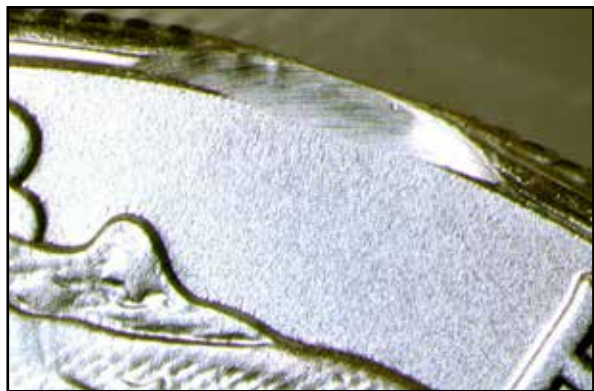
**N**GC graders identified a curved clip at 11 o'clock (obverse facing) on a 2015 American Silver Eagle bullion coin. It was discovered in a submission of a US Mint-sealed green "monster box" that contained 500 of these newly issued coins.

While a curved clip of this size is not normally very interesting or valuable, this one is special because it was found on a silver eagle. "Although the clip is small, it is very rare," said David J. Camire, NGC Mint Error specialist. "Fewer than six examples are known for all years of silver eagles from 1986 to present."

The coin is missing detail along the rim on the obverse between the "B" and "E" of LIBERTY. There is also a corresponding weak area directly opposite at the bottom of the obverse along the rim to the right of the "5" in the date, a result of the clipped planchet being upset ("upset" is when it gets its raised rims). This is one of the diagnostics of a clip, used to determine that it is an authentic mint error and not post-mint damage or an alteration.

The reverse of the coin lacks details along the rim under the "SIL" of SILVER and additional weakness can be found along the rim above "OF."

**Obverse with clip (left) and corresponding area of weakness opposite the clip (right).**



**Reverse with clip (left) and corresponding area of weakness opposite the clip (right).**





# Fred Weinberg & Co.

Dealer in Major Mint Error Coins & Currency



[fredweinberg.com](http://fredweinberg.com)



**1964 Lincoln Cent**  
**Struck on Clad 10C Plan**  
**PCGS MS-63**  
**\$4,500.00**



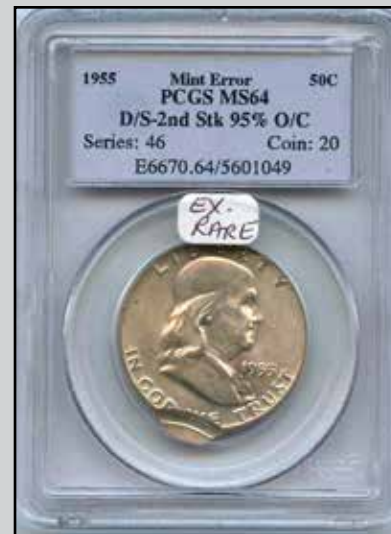
**1965 Roosevelt Dime**  
**Struck on a Silver Dime Planchet**  
**PCGS MS 62**  
**\$10,000.00**



**1916 Buffalo Nickel**  
**Struck on Elliptical Planchet**  
**PCGS MS-62**  
**\$5,500.00**



**1955 Franklin Half Dollar**  
**Double Struck-Second strike 95% Off-Center**  
**PCGS MS-64**  
**\$3,800.00**





## WHOLESALE PRICE LIST OF MAJOR MINT ERROR COINS & CURRENCY

Mint Error Price List 2016

Don't forget-you can view all Certified Error Coins and Error Currency on our website ([www.FredWeinberg.com](http://www.FredWeinberg.com))

When ordering by phone or email, please list the page #, short description of the item (Date, Error, Grade, and Price), so we know exactly what coin (s) you are interested in.

We accept Checks, Money Orders, & Pay-Pal Sorry No Credit Cards...We always pay for all Postage & Insurance fees for U.S. shipments.

Please note: California residents must add 9.00% Sales Tax for orders under \$1,500.

Paying via Pay-Pal: Just use our email address ([Fred@Fredweinberg.com](mailto:Fred@Fredweinberg.com)) as the recipient when sending funds.

Note: The PCGS/NGC Certified section of better Major Mint Errors start on Page 1.

Abbreviations Used  
larger" than % of clip).

Note: Clip %'s are by actual weight, not appearance (most clips "look

DSBS=Die Struck Both Sides, (refers to a D/S coin's second strike) F/O=Flip-over D/S=Double Struck B/S=Broadstruck FS=Full Steps FB=Full Bands

RD=Red RB=Red & Brown PL=Proof-Like CCW=Counter-Clockwise DAS=Die Adjustment Strike TR=Tag Reads TPH=Thick PCGS holder

MAJOR MINT ERROR PRICE LIST OF U.S. COINS

Feb 2016

## Fred Weinberg's Price List of Major Mint Error Coins & Currency

1794-1857 Half Cent Planchet NGC Certified An extremely rare Certified Half Cent planchet Weighing 5.5 grams. Only 3-4 confirmed pieces known at most.	\$1,750
1856 Braided Hair Half Cent PCGS MS-63 RB Clipped planchet @ 6:00. Rare this grade. Easily seen and comes with 1994 auction tag. Ex. Henry Hilgard collection.	\$650
N.D. Large Cent T-II Planchet PCGS MS-61 BN Most are XF to AU , this is the highest grade I've seen.	\$450
1831 Large Cent PCGS F-12 UNIQUE- Double Struck-2nd strike 90% off-center. Reverse Die Cud on both strikes (TR). A fantastic Type coin error that is D/S and the full cud over "TES" of States shows on both strikes.	\$1,350
1856 Braided Hair Cent PCGS MS-63 BRN Partial Collar Strike-Upright 5. A full strong "Railroad Rim"- Highest graded Partial Collar Strike known. Ex. Henry Hilgard.	\$600
1863 Indian Cent PCGS F-15 Struck 5% Off-Center. A scarce and popular Civil War date.	\$285
1863 Civil War Token PCGS MS-63 BN Obverse Cud Die Break-Patriotic "Washington Exchange" - Not a rare cud on this CWT, but the finest known. Has good red luster.	\$120
1863 Civil War Token NGC MS-62 Flipover Double Struck in Collar-Both dates show. Seldom seen. "Oliver Boutwell - Miller Troy, New York"	\$350
1864 Indian Cent PCGS XF-45 Broadstruck out of collar-Scarce Civil War year.	\$225
1865 Indian Cent Plain 5 PCGS G-06 170° Rotated Dies	\$165



## **Fred Weinberg's Price List of Major Mint Error Coins & Currency**

1946-S Lincoln Cent PCGS MS-64 Red	\$185
10% Indent Obverse and Partial Collar (TR). Double Error	
1947 Lincoln Cent PCGS MS-65 RB	\$95
Struck 5% Off-Center & Reverse Lamination (TR).	
1959 Lincoln Cent PCGS MS-64 BN	\$175
Struck 10% Off-Center- First year of issue.	
1959 Lincoln Cent PCGS MS-63	\$1,750
Struck on a Silver Dime planchet. First year of issue.	
1960 Small Date Lincoln Cent PCGS MS-64 RED	\$50
On split B4 Striking plan-Small Date (TR). An obsolete error type.	
1964 Lincoln Cent NGC MS-64 RED	\$600
Triple Struck-Dramatic & two full dates.	
1964 Lincoln Cent PCGS MS-63	\$4,500
RARE Transitional Struck on a CLAD Dime planchet. This coin should have been struck on a Silver Dime planchet in error, but was instead struck on a (1965) Clad Dime planchet. Very RARE Transitional wrong planchet coin!	
1967 Lincoln Cent PCGS AU-58	\$450
Struck on Philippines 10 Centavo planchet.	
1967 Lincoln Cent PCGS MS-65	\$4,000
Struck 20% Off-Center on struck 1967 Dime. Not your usual Double Denomination-The cent overstrike is 20 % Off-Center.	
1970 Lincoln Cent NGC MS-66	\$485
Struck on a Clad Dime Blank. Weight: 2.2 grams.	
1978 Lincoln PCGS MS-66	\$850
Double Denomination on Struck Dime. Popular "11¢ piece".	

## **Fred Weinberg's Price List of Major Mint Error Coins & Currency**

1979-D Lincoln Cent PCGS MS-66 RED	\$2,800
Three Bonded Planchets/Multi Struck 9.28 gms (TR). A beautiful 3 pc. Bonded Die Cap Set. Very deep in a huge PCGS holder. Holder measures 1-1/3' x 6" x 3/4". Comes with NGC Photo-Cert graded MS-67 RED. Rare for the 1970's.	
1980 Lincoln Cent PCGS MS-65	\$450
Struck on Clad Dime planchet.	
N.D. Copper Lincoln Cent NGC MS-66 RED/BRN	\$975
Foldover Strike-probably highest graded of this obsolete error type.	
CU Lincoln Cent NGC MS-63 BN	\$60
Reverse Half of Split planchet (1.4gm) Another obsolete error type.	
CU Lincoln Cent NGC MS-64 RED/BRN	\$75
Obverse Struck-Thru Capped Die (TR). Actually a mid-stage Brockage.	
1989 Lincoln Cent NGC MS-66 RED	\$1,150
Foldover Strike-Another obsolete error type.	
1994 Lincoln Cent PCGS MS-64 RED	\$135
165° CW Rotated Dies (TR). Scarce on Moderns.	
1994 Lincoln Cent PCGS MS-64	\$750
Double Denomination on Struck Dime. Great blast luster.	
1995 Lincoln Cent NGC MS-65	\$450
Struck on a Clad Dime planchet. Brilliant & Lustrous	
1995 Lincoln Cent PCGS MS-65	\$850
Double Denomination on Struck Dime. Blast luster with strong details of both strikes	

## **Fred Weinberg's Price List of Major Mint Error Coins & Currency**

1998 Lincoln Cent PCGS MS-66 RED	\$350
75% Deep Obv Die Cap (TR). This high walls around 75%+ of obv, and "lower" walls on the other 25%. (TPH).	
1998 Lincoln Cent PCGS MS-65 RED	\$1,250
2-pc. Bonded Die Cap Set (TR). A classic cup-n-saucer- Great look.	
1998 Lincoln Cent PCGS MS-65	\$425
Struck on a Clad Dime planchet.	
1999 Lincoln Cent PCGS MS-64 RED	\$650
Deep Obv Die Cap (TR). Very high walls (TPH).	
1999 Lincoln Cent PCGS MS-66 Dual Date	\$3,000
Double Denomination on 1998 Dime-Wonderful lite toning.	
1999 Lincoln Cent PCGS MS-66 RED	\$5,000
7-pc. Bonded Deep Die Cap (TR). In one of the biggest PCGS holders available (8-1/4" x 5-1/2" x almost 1" thick). 2-pc caps are available, but not 7 pcs. like this. It is a trophy item for the advanced collector, or someone who wants something special.	
2000 Lincoln Cent PCGS MS-64 RED	\$85
70% Brockage and Broadstruck.	
2001 Lincoln Cent PCGS MS-66 RED	\$95
70% Brockage & Broadstruck.	
2001 Lincoln Cent PCGS MS-66 RED	\$165
Reverse Die Cap- Dramatic	
200xx Lincoln Cent PCGS MS-65 RED	\$80
Double Struck-2nd strike 65% off-center. Flaming red & Lustrous.	



## **Fred Weinberg's Price List of Major Mint Error Coins & Currency**

N.D. Lincoln Cent PCGS MS-66	\$135
Reverse Die Cap.	
Three Cent Nickels & Liberty Nickels	
1865 Three Cent Nickel PCGS AU-55	\$1,500
Struck 25% Off-Center- Scarce percentage and grade.	
1900 Liberty Nickel NGC MS-62	\$1,250
Struck 15% off-center @ 5:00. Very scarce in MS.	
Buffalo Nickels	
Buffalo Nickel NGC Mint Error	\$675
Buffalo Nickel T-II planchet 5.1 grams (TR)- RARE	
1916 Buffalo Nickel PCGS MS-62	\$5,500
Struck on Elliptical planchet. WT:4.2 gms (TR). The 2nd of only two known elliptical Buffalo nickels. I sold the first one (more oval) about ten years ago for \$11,500 in MS-63.	
1919 Buffalo Nickel PCGS XF-45	\$650
Struck 12% Off-Center- Looks CH AU	
1919-S Buffalo Nickel NGC MS-60	\$1,000
Struck 15% Off-Center. Scarce Date/Mintmark- PQ	
1920 Buffalo Nickel PCGS XF-45	\$1,150
Struck 25% Off-Center.	
1929 Buffalo Nickel PCGS XF-45	\$1,000
Struck 20% Off-Center.	

## **Fred Weinberg's Price List of Major Mint Error Coins & Currency**

1935 Buffalo Nickel PCGS MS-63	\$500
Struck 5% Off-Center. (2-A).	
1935 Buffalo Nickel NGC AU-58	\$425
Struck 10% Off-Center. Lustrous.	
1935 Buffalo Nickel PCGS MS-63	\$800
Struck 15% Off-Center.	
1935 Buffalo Nickel PCGS MS-62	\$1,000
Struck 20% Off-Center- Looks 25% Off-Center to me.	
1935 Buffalo Nickel NGC MS-62	\$1,200
Struck 25% Off-Center.	
1936 Buffalo Nickel PCGS MS-62	\$550
Struck 5% Off-Center.	
1936 Buffalo Nickel PCGS MS-63	\$650
Struck 10% Off-Center.	
1936-S Buffalo Nickel PCGS MS-65	\$250
Clipped planchet @ 12:30. Scarce Date/Mintmark & Rare grade.	
1937 Buffalo Nickel PCGS MS-61	\$700
Struck 15% Off-Center.	
1937-S Buffalo Nickel PCGS XF-40	\$475
Struck 5% Off-center. Rare Date/Mintmark.	

## Fred Weinberg's Price List of Major Mint Error Coins & Currency

Jefferson Nickels	
1958 Jefferson Nickel PCGS MS-64	\$50
Improperly Annealed/Sintered Planchet (TR). Much scarcer than the 1959's. Highest Graded.	
1959 Jefferson Nickel NGC MS-65 (*)	\$40
Improperly Annealed (TR). The famous "Black Beauties".	
(1960) Jefferson 5¢ NGC MS-67 (3-coin Multi-Holder	\$9,750
UNIQUE~100 Greatest U.S. Error Coins #76. This Jefferson 5¢ was struck over a Struck Brass 1960 Peruvian 5 Centavo coin. Comes with a normal 1960 Jefferson Nickel and 1960 Peruvian 5 Centavos for comparison. 2010 value in 100 Greatest U.S. Error Coin book is \$12,500-\$15,000.	
1960-D Jefferson Nickel PCGS MS-64 BN	\$450
Struck on a Cent planchet-Full strong Date/Mintmark-Earlier Date	
1962 Jefferson Nickel PCGS MS-62	\$425
Struck on a Cent Planchet.	
1964-D Jefferson Nickel PCGS MS-63 RED	\$450
Struck on a Cent planchet-Full strong Date & Flaming red.	
1968-S Jefferson Nickel PCGS Proof-63	\$3,500
(Proof). Double Struck in collar.-Rotated Die Adjustment strike (TR) An extremely Rare Proof error that is 45 years old. The second strike is rotated almost 90° CCW, and is VERY easily seen O/R.	
1969-S Jefferson Nickel PCGS Proof-65	\$2,750
Struck-Thru Sanding Disc. Similar to the 1986 ASE's, but 18 yrs. earlier. Two Known - from "Safe Deposit" deal of 10 yrs. Ago. (2-A)	



## Fred Weinberg's Price List of Major Mint Error Coins & Currency

1976 Jefferson Nickel PCGS AU-58	\$950
Double Denomination on Struck Cent. Flipped over with cent date, Liberty, etc. showing on the reverse.	
1976-D Jefferson Nickel PCGS MS-64	\$200
Collar Cuds 5:00 & 10:30. Two different collar cud breaks. 1st seen.	
1994 Jefferson Nickel PCGS MS-65	\$180
40% Brockage Obverse from Split Capped Die (TR).	
1996 Jefferson 5¢'s 2pc. Set PCGS MS-65 & MS-64	\$450
Mated pair Coin #1 is Double Struck into Coin #2 and Coin #2 has a Brockage by the 2nd strike of Coin #1. A very Neat set.	
1998 Jefferson Nickel PCGS MS-66	\$85
25% Brockage and Broadstruck (TR).	
(1999-D) Jefferson Nickel PCGS MS-65	\$1,500
8-pc. Bonded Planchets Cluster (TR). Weight 131 grs. At least 8 planchets that have been detached from a much larger cluster	
2015-D Jefferson Nickel PCGS MS-64 (*)	\$165
90° CW Rotated Reverse-1st error seen on 2015 5¢ Scarce & Popular	
2015-D Jefferson Nickel PCGS MS-65 (*)	\$195
90 Degrees CW Rotated Reverse	
2015-D Jefferson Nickel PCGS MS-65 (2-A)	\$220
105 Degrees CW Rotated Reverse	
2015-D Jefferson Nickel PCGS MS-64 (*)	\$235
135 Degrees CW Rotated Reverse	
2015-D Jefferson Nickel PCGS MS-65 (*)	\$275
135 Degrees CW Rotated Reverse	

## **Fred Weinberg's Price List of Major Mint Error Coins & Currency**

Early Dimes	
1876-CC Seated Liberty Dime NGC VF-25	\$875
Broadstruck out of the Collar. Any "CC" Error is Rare.	
1876 Seated Liberty Dime PCGS MS-62 Secure Shield	\$4,000
Struck 15% Off-Center.	
1887 Seated Liberty Dime PCGS MS-64	\$2,350
Struck 5% off-center. Rare this grade- Lively toned.	
1887 Seated Liberty Dime PCGS MS-63	\$3,700
Struck 10% O/C @ 1:00. Rare-High grade. Great brilliant luster.	
1888 Seated Liberty Dime PCGS AU-55	\$1,400
Struck 10% off-center on a Type-I blank.	
1890 Seated Liberty Dime PCGS AU-58	\$1,800
Struck 12% Off-Center @ 4:00.	
1903 Barber Dime PCGS AU-58	\$1,800
40% Brockage Obverse (2nd strike-Brockage) - Rare Type Error.	
Roosevelt Dimes	
N.D. Silver Roosevelt Dime PCGS MS-64	\$85
Struck 70% Off-Center (TR). Date/Mintmark shows on reverse.	
1965 Roosevelt Dime PCGS MS-62	\$10,000
Struck on a Silver Dime planchet. Rare Transitional. Original BU with light toning- RARE this grade and popular.	

## Fred Weinberg's Price List of Major Mint Error Coins & Currency

1972-S Roosevelt Dime PCGS Proof-67	\$475
Double Struck 2nd strike indent- 1st strike normal (TR). To quote Mike Diamond "There aren't many proof errors in which a normal first strike is followed by an indent on the second strike". Includes more details from Mike Diamond. Proof Error!	
1991-S Roosevelt Dime PCGS Proof-69 Deep Cameo	\$375
Strong clashed Dies Obv/Rev. Parts of the date and "S" as well as a complete outline of Roosevelt's head shows, and lots more.	
1999 Roosevelt Dime PCGS MS-66	\$85
10% Indent, Double Struck & Broadstruck (TR). LARGE!	
1999-S Roosevelt Dime PCGS Proof-68 Cameo	\$175
(Silver) Obverse Struck-Thru Thread (TR).	
2001 Roosevelt Dime PCGS MS-64	\$275
Shattered Obverse Die - Scarce.	
Early Quarters	
1926-D Standing Liberty Quarter PCGS AU-58	\$550
Cud Die Break @ 11:00 (TR). Unlisted- First seen. Washington Quarters	
1964 Washington Quarter PCGS MS-62	\$275
Large Broadstruck out of Collar (TR). Larger than SBA \$1.	
1967 Washington Quarter PCGS MS-64 RED/BRN	\$875
Struck on Cent planchet.	
1968-D Washington Quarter PCGS MS-63 BRN	\$1,150
Struck on Cent planchet (TR). Clad strip embedded obv. Full D/MM.	
1976 Bi-Centennial Quarter PCGS MS-66	\$135
Struck 5% Off-Center. Popular one-year Type coin.	



## **Fred Weinberg's Price List of Major Mint Error Coins & Currency**

1977 Washington Quarter PCGS MS-63	\$250
Struck on a Nickel Planchet.	
1978 Washington Quarter PCGS MS-63	\$250
Struck on a Nickel Planchet.	
1979 Washington Quarter PCGS MS-64	\$275
Struck on a Nickel Planchet.	
Washington Clad Quarter NGC Mint Error (*)	\$35
Bow-Tie Clip Blank- a 1" x 3/4" piece of actual webbing from a punched planchet strip. The punch & tear marks on all 4 sides are easily seen-One of the best authenticating tools for education	
1996 Washington Quarter PCGS MS-63	\$275
Struck on a Nickel Planchet. Scarcer Date.	
1996-D Washington Quarter MS-64	\$140
Double Struck-second strike 75% Off-Center & Rotated	
1996-D Washington Quarter MS-65	\$315
Struck on a Nickel Planchet. Scarce Date/Mintmark	
1997 Washington Quarter PCGS MS-63	\$85
Reverse Clad Layer Missing. Red.	
1998-D Washington Quarter PCGS MS-65	\$195
Rotated and Double Struck in Collar (2-A)	
1998-D Washington Quarter PCGS MS-65	\$85
20% Indent Obverse & Broadstruck.	
N.D. Washington Quarter PCGS MS-65	\$250
70% Early Brockage Obverse & Large Broadstrike (TR).	

## Fred Weinberg's Price List of Major Mint Error Coins & Currency

N.D. Washington Quarter PCGS MS-62	\$185
Double Clamshell Split planchet (TR). Two reverse clad layers on same side. First seen like this.	
N.D. Washington Quarter PCGS MS-62	\$350
Struck on a Clad Dime Planchet.	
CLOCK OF OFF-CENTER WASH 5¢ -SEE SCANS	\$1,250
This 12-pc.Set of Major Off-Center Washington Quarters has a major off-center coin in each clock position. Six have dates. Extremely difficult to assemble.	
1999-2007 STATE QUARTER ERRORS	
1999 Delaware Quarter PCGS MS-63	\$165
Struck 65% Off-Center.	
1999-D Delaware Quarter (*) PCGS MS-63	\$60
Improperly Annealed/Sintered planchet- Scarce State.	
1999-D Delaware Quarter (*) PCGS MS-64	\$80
Improperly Annealed/Sintered planchet- Scarce State.	
1999 Pennsylvania Quarter PCGS MS-63	\$185
Struck 60% Off-Center.	
2000 New Hampshire Quarter PCGS MS-64	\$135
Struck 70% Off-Center.	
1999 Georgia Quarter PCGS MS-63	\$65
Struck 5% Off-Center.	
1999 Georgia Quarter PCGS AU-58	\$85
Struck 20% Off-Center.	

## **Fred Weinberg's Price List of Major Mint Error Coins & Currency**

1999-D Georgia Quarter PCGS MS-63	\$275
Reverse Clad Layer Missing-Mostly Full Red.	
1999 Connecticut Quarter PCGS MS-64	\$350
Double Struck-2nd strike 65% O/C Uniface 2nd strike-Scarce State.	
1999 Connecticut Quarter PCGS AU-58	\$175
160 Degrees Rotated Reverse Dies	
2000 So. Carolina Quarter PCGS MS-64	\$75
Struck 5% Off-Center.	
2000 So. Carolina Quarter PCGS MS-66	\$115
Struck 5% Off-Center.	
2000 So. Carolina PCGS MS-65	\$90
Struck 10% Off-Center. (2-A).	
2000 So. Carolina PCGS MS-67	\$150
Struck 10% Off-Center.	
2000 New Hampshire NGC MS-66	\$285
Double Struck-2nd strike rotated in collar (TR). 2nd strike is almost rotated 90 degrees. Visible on both sides.	
2000 New Hampshire PCGS MS-65	\$375
Double Struck-Both O/C 25% & 40% O/C. Early Brockage Rev 2nd strike (TR). Three dramatic Errors on one coin.	
2000 New Hampshire PCGS MS-66	\$120
15% Indent Obverse and Broadstruck.	
2000 New Hampshire PCGS MS-66	\$235
20% Brockage and Broadstruck.	



## **Fred Weinberg's Price List of Major Mint Error Coins & Currency**

2000 New Hampshire Quarter PCGS MS-66	\$235
25% Brockage and Broadstruck.	
2000 New Hampshire Quarter PCGS MS-66	\$275
40% O/C Brockage & Broadstruck. Brockage by an off-center coin.	
2000 New Hampshire Quarter PCGS MS-66	\$325
70% Brockage & Broadstruck (Late Stage).	
2000 New Hampshire Quarter PCGS MS-66	\$85
Large Broadstrike on T-I Blank (TR). Scarce.	
2000 New Hampshire PCGS MS-66	\$65
Struck 15% Off-Center.	
2000 New Hampshire Quarter PCGS MS-65	\$85
Struck 20% Off-Center. (3-A).	
2000 New Hampshire Quarter PCGS MS-66	\$100
Struck 20% Off-Center.	
2000 New Hampshire Quarter PCGS MS-66	\$100
Struck 25% Off-Center.	
2000 New Hampshire Quarter PCGS MS-65	\$120
Struck 30% Off-Center.	
2000 New Hampshire Quarter PCGS MS-66	\$135
Struck 35% Off-Center.	
2000 New Hampshire Quarter PCGS MS-64	\$135
Struck 40% Off-Center.	
2000 New Hampshire Quarter PCGS MS-66	\$150
Struck 40% Off-Center.	

## **Fred Weinberg's Price List of Major Mint Error Coins & Currency**

2000 New Hampshire Quarter PCGS MS-66	\$150
Struck 50% Off-Center.	
2000 New Hampshire Quarter PCGS MS-64	\$135
Struck 65% Off-Center.	
2000 New Hampshire PCGS MS64	\$135
Struck 70% Off-Center.	
2000 New Hampshire PCGS MS65	\$135
Struck 75% Off-Center.	
2000 Virginia Quarter PCGS MS-64	\$95
Struck 15% Off-Center.	
2000 Virginia Quarter PCGS MS-66	\$500
Double Struck-2nd strike 40% off-center-Lustrous	
(2000) Virginia Quarter PCGS MS-65	\$475
Triple Struck second & third strikes 50% off-center.	
2001 New York Quarter PCGS MS-66	\$500
Triple Struck second & third strikes 35% off-center. Lustrous	
2001 New York Quarter PCGS MS-65	\$500
Triple Struck second & third strikes 45% off-center.	
2001-D New York Quarter PCGS AU-55	\$285
Reverse Clad Layer Missing. Very Scarce State.	
2001 No Carolina Quarter PCGS MS-63	\$65
Struck 5% Off-Center.	
2001 No. Carolina Quarter PCGS MS-66	\$450
Triple Struck second & third strikes 40% off-center. Toning O/R.	

## **Fred Weinberg's Price List of Major Mint Error Coins & Currency**

2001 Vermont Quarter PCGS MS-63	\$185
Struck 5% Off-Center. Scarce State.	
2002-D Mississippi Quarter PCGS MS-66	\$165
Struck on Elliptical planchet. Great Oval shape. (3-A).	
2003 Illinois Quarter PCGS MS-63	\$50
Improperly Annealed/Sintered (TR) (*)	
2005-S West Virginia Quarter NGC PF-69 Ultra Cameo	\$75
Silver-Reverse Die Crack @ 4:00 (TR).	
2009-2015 U.S. Territories & National Park Quarter Errors	
2009-S Dist of Columbia 25¢ NGC PF-69 Ultra Cameo	\$250
Clad Partial Collar-Rare mechanical error on Proofs	
2013 Perry's Victory Nat'l. Park Quarter PCGS MS-64	\$175
8% End of Strip Clip.	
2014 Arches Nat'l. Park Quarter PCGS AU-58	\$275
Uncentered Broadstrike (Looks 5% off-center) Unique.	
2015 Kisatchie Nat'l. Park Quarter PCGS MS-64	\$95
3% Clipped Planchet. Scarce.	
2015 Kisatchie Nat'l. Park Quarter PCGS MS-66	\$125
5% Clipped Planchet. Scarce.	
Half Dollar Errors	
1955 Franklin Half Dollar PCGS MS-64	\$3,800
Double Struck-Second strike 95% off-center @ 6:00.	
Double Struck Franklin Halves are Extremely Rare.	



## **Fred Weinberg's Price List of Major Mint Error Coins & Currency**

1961-D Franklin Half Dollar NGC MS-62	\$3,750
Struck on a Nickel planchet.	
1966 Kennedy Half Dollar PCGS MS-62	\$475
Die Adjustment Strike-Weak Reeded Edge. Full Proof surfaces	
1968-D Kennedy Half Dollar PCGS MS-62	\$250
On Missing obverse AG layer. Weight: 9.5 grams (TR).	
1969-D Kennedy Half Dollar PCGS AU-58	\$185
On Missing obverse AG layer. Weight: 9.3 grams (TR).	
1970-S Kennedy Half Dollar PCGS PF-65 Deep Cameo	\$1,000
Strong Clashed Dies Obv/Rev (TR). One of the strongest clashed dies ever seen on any denomination, and it's a PROOF Half dollar.	
1976-S Bi-Centennial Half Dollar PCGS Proof 67 Cameo	\$650
Partial Collar strike. UNIQUE PROOF Bi-Centennial "Railroad Rim".	
1977-D Kennedy Half Dollar PCGS MS-63	\$7,500
(Rare Transitional) Struck on 40% Silver planchet 11.5gms, struck on leftover 1976 Silver planchets from the San Francisco Mint.	
1990 Kennedy Half Dollar PCGS MS-63	\$125
Uncentered Broadstrike (Looks 5% off-center).	
1990 Kennedy Half Dollar PCGS MS-64	\$125
Struck 5% Off-Center. (2-A)	
1990 Kennedy Half Dollar PCGS MS-62	\$165
Struck 10% Off-Center.	
1990 Kennedy Half Dollar PCGS MS-62	\$195
Struck 15% Off-Center. PQ	

## **Fred Weinberg's Price List of Major Mint Error Coins & Currency**

1996 Kennedy Half Dollar PCGS MS-64	\$135
Struck 5% Off-Center. Semi Proof-Like surfaces obverse.	
1996 Kennedy Half Dollar PCGS MS-64	\$135
5% Indented Strike @ 7:00 and Tilted Partial Collar. (TR)	
1999-D Kennedy Half Dollar NGC MS-64	\$700
Double Struck-second strike 80% off-center. Second strike DSBS.	
N.D. Kennedy Half Dollar NGC MS-64	\$375
Struck 75% Off-Center.	
Trade, Morgan , and Peace Dollars	
1877-S Trade Dollar PCGS XF-40	\$750
Raised & Retained Lamination Flap- Any Error on Trade \$1 is RARE.	
1921 Morgan Dollar PCGS MS-63	\$275
Struck on Defective planchet @ 4:00. (TR)	
1922 Peace Dollar PCGS MS-62	\$235
Improperly Annealed Metal mixture/Defective planchet reverse.	
Shows on both sides- A Neat Look!	
1924 Peace Silver Dollar PCGS MS-64	\$385
Struck on defective planchet on reverse 10:00. Unusual Look	
Ike and Susan B. Anthony Dollars	
1974-D Ike Dollar PCGS MS-64	\$1,800
Double Struck-Second strike 85% off-center @ 7:00. DSBS	
1976-D Bi-Centennial Ike \$1 PCGS MS-62	\$450
Struck 5% Off-Center.	

## **Fred Weinberg's Price List of Major Mint Error Coins & Currency**

1978 Ike Dollar PCGS MS-64	\$500
Struck 15% Off-Center.	
1978 Ike Dollar PCGS MS-63	\$2,200
Struck on 22% Defective Plan/Improperly Bonded strip (TR).	
One of the neatest looking \$1 Ike's I've seen. A lot happened to this planchet well before it was struck. Unique Error Type.	
N.D. Ike Dollar PCGS MS-63	\$2,000
Struck on a Clad Half Dollar Plan (TR). (Type-I Blank).	
N.D. Ike Dollar PCGS MS-64	\$2,250
Struck on a Clad Half Dollar Plan (TR). (Type-I Blank).	
1979-P \$1 Susan B. Anthony PCGS MS-63	\$325
Struck 25% Off-Center. Scarce.	
1979-D \$1 Susan B. Anthony PCGS MS-63	\$1,350
Struck on a Clad Quarter planchet. Very lustrous & Scarce.	
1999 \$1 Susan B. Anthony PCGS MS-63	\$85
Broadstruck on a Type-I planchet. PQ & Lustrous (2-A)	
1999 \$1 Susan B. Anthony PCGS MS-64	\$95
Uncentered Broadstrike-Looks 5% off-center. (2-A)	
1999-P \$1 Susan B. Anthony PCGS MS-65	\$150
Struck 10% Off-Center.	
1999 \$1 Susan B. Anthony PCGS MS-65	\$250
Struck 15% Off-Center.	
1999 \$1 Susan B. Anthony PCGS MS-66	\$350
Struck 25% Off-Center.	



# **Fred Weinberg's Price List of Major Mint Error Coins & Currency**

1999 \$1 Susan B. Anthony PCGS MS-66	\$450
Struck 35% Off-Center.	
1999 \$1 Susan B. Anthony PCGS MS-66	\$12,500
Struck on Experimental Planchet . 25% ZN-2.5%NI-72% CU-7.73 grams.(TR) Now THIS is a "GOLDEN DOLLAR". It is struck on an Experimental Planchet to determine suitability for the soon to be struck 2000 Sac \$1's. There are about 24-30 pcs. known on State 25¢'s, and only 6 SBA's on theses Experimental Planchets.	
Commemorative Errors	
1989-D \$1 Congress Commem. NGC MS-69	\$2,200
180° Rotated Dies. In 2015 Red Book @ \$1,800 for MS-67. This NGC MS-69 is the highest graded for NGC.	
1989-D \$1 Congress Commem. PCGS MS-69	\$2,400
180° Rotated Dies. In 2015 Red Book @ \$1,800 for MS-67. This PCGS MS-69 is the highest graded for PCGS.	
Commem. Silver \$1 T-II 90% Silver (TR) ANACS MS-60	\$100
A Proof surface Silver planchet for U.S. Silver \$1 Commem. coins.	
2000-2010 Sacagawea Dollars	
2001 Sacagawea Dollar PCGS MS-68	\$175
Improperly Annealed-Sintered Plan (TR). High grade.	
2007-2012 Presidential Dollars	
2007-D George Washington \$1 PCGS MS-64	\$65
Improperly Annealed-Sintered Planchet. 50% of edge is cracked due from the excess annealing.	

## **Fred Weinberg's Price List of Major Mint Error Coins & Currency**

2007-D George Washington \$1 PCGS MS-64	\$375
Reverse Manganese Layer Missing.	
2007 George Washington \$1 PCGS MS-67 (*)	\$300
Missing Edge Lettering.	
2007-P John Adams Dollar PCGS MS-65	\$65
Improperly Annealed/Sintered. A dark lustrous coffee color. (*)	
2007-P John Adams Dollar PCGS MS-66	\$80
Improperly Annealed/Sintered. A dark lustrous coffee color.	
2007-P John Adams Dollar PCGS SP-64 (*)	\$40
Weak Edge Lettering-Satin Finish (TR) -Coin is from US Mint set.	
2007-P John Adams Dollar PCGS SP-65 (9-A)	\$50
Weak Edge Lettering-Satin Finish (TR) -Coin is from US Mint set.	
2007 John Adams Dollar PCGS MS-65	\$550
Reverse Manganese Layer Missing and Missing Edge Lettering.	
Rare Double Error. Flaming Red Reverse & M.E.L.	
2007-D John Adam Dollar(s) 2-pc. set PCGS MS-64	\$850
2 coins in one 4-1/2" x 3" PCGS holder. Two piece set of obverse and reverse manganese layer missing in on holder, same grade.	
2007 T. Jefferson Dollar PCGS MS-66	\$150
Missing Edge Lettering. Scarce President	
2007-D T. Jefferson PCGS AU-58	\$265
Obverse Manganese Layer Missing. Coin is BU w/lite marks.	
(2007) T. Jefferson Dollar(s) 2-pc. set PCGS MS-65	\$1,250
Double Error 2pc. Set- Both coins are Missing Edge Lettering and have either the obverse or reverse manganese layer missing	
Rare set & Combo Error.	

## **Fred Weinberg's Price List of Major Mint Error Coins & Currency**

(2007) T. Jefferson Dollar(s) 2-pc. set PCGS MS-66	\$1,450
Double Error 2pc. Set- Both coins are Missing Edge Lettering and have either the obverse or reverse manganese layer missing	
Rare set & Combo Error.	
2007 James Madison Dollar PCGS MS-64	\$350
Reverse Layer Missing	
2007 James Madison Dollar PCGS MS-65	\$600
Rev. Manganese Missing+Missing Edge Lettering-Flaming Red	
2007-D James Madison Dollar PCGS MS-63	\$3,500
Double Edge Lettering-Overlapped. Unique for Madison.	
2008 J. Quincy Adams Dollar PCGS MS-63	\$165
4% Clipped Planchet. Brilliant & Lustrous- Scarce.	
2009 John Tyler PCGS MS-65	\$450
Obverse Manganese Layer Missing. Full Flaming Red-Scarce Pres.	
2009 Zachary Taylor Dollar PCGS MS-65	\$800
Reverse Manganese Layer Missing & Missing Edge Lettering.	
Flaming Red Copper Reverse. Only one known of this President.	
2010 Millard Fillmore Dollar PCGS MS-64	\$550
Retained Cud Die Break OBV-Missing Edge Lettering. (TR) Only two known of this dramatic true Retained Cud Die Break on any modern dollar, and it is Missing the Edge Lettering. (2-A).	
2012 Grover Cleveland Dollar NGC MS-65	\$2,250
Missing Edge Lettering. Only Twelve-Fifteen known.	



## **Fred Weinberg's Price List of Major Mint Error Coins & Currency**

American Silver Eagles	
1987 \$1 American Silver Eagle PCGS MS-69	\$375
Deep Struck-Thru Obv. @ 4:00 (TR). Not your usual Struck-thru. This is a Deep Crater.	
U.S. Gold Errors	
1861 \$1 Gold Type-III PCGS MS-64	\$1,150
Clashed Die Obv/Rev. "ERTY" shows on Rev. (TR).	
1999-W \$5 American Gold Eagle PCGS MS-69	\$875
Struck w/Unfinished Proof Dies. (2-A).	
2015 \$5 American Gold Eagle NGC MS-69	\$375
Narrow Reeds Early Releases (TR).	
ERROR CURRENCY PCGS CERTIFIED & UNCERTIFIED	
1935-D Silver Certificate Circ-Fine	\$450
Inverted Third Printing. Rare for Silver Certificate.	
1995 \$1 FRN PCGS Extremely Fine 45 PPQ	\$2,250
Mis-Aligned Face & Back printing - MAJOR - Third overprint is centered, but front and back of note major mis-cut & mis-aligned	
2003 \$2 FRN PCGS Gem New 65PPQ	\$65
Stuck Digit in upper right Serial #-Very unusual on this denom.	
1950-A \$5 Federal Reserve Note Circ-X.F.	\$135
Major Mis-Cut Sheet on back.	
Unknown Series \$10 FRN PCGS Very CH New 64 PPQ	\$975
Missing third face over print-One of the most dramatic Error Notes!	

## **Fred Weinberg's Price List of Major Mint Error Coins & Currency**

1985 \$20 Federal Reserve Note UNC	\$750
Mis-Cut Sheet Front to Back.	
1990 \$20 Federal Reserve Note Circ X.F.	\$350
Double Folded Overprint on lower right.	
Certified World Error Coins	
1979 Canada Cent NGC MS-62 RED/BRN	\$130
Struck on a New Zealand Cent planchet. Mostly Red.	
1979 Canada Cent NGC MS-64 Red	\$150
Struck on a New Zealand Cent planchet. Full Red.	
2006 Chile 50 Pesos PCGS MS-65	\$1,500
Struck 20% Off-center on 1985 Mexico 5 Peso coin. UNIQUE!	
This 24 year-old 1985 Mexico 5 Pesos coin was struck in 2006	
20% off-center with Chile 50 Pesos dies. Both dates (1985 and	
2006) show. Probably a "helped" coin, but still unique & dramatic.	
Comes with normal Chile 50 Pesos coin for comparison.	
(1891-1916) German Empire 1 PF PCGS MS-63 BRN	\$375
1st Strike Brockage Obv. (TR). Old & Rare	
1967 Hong Kong 50c. PCGS MS-62	\$225
Partial Security Edge-Rare Country for any Error.	
2015 India 2 Rupee 2 pc. Set PCGS MS-62	\$115
This 2-pc. set PCGS holders has a 2015 2 Rupee struck on a 50	
Piase, and the second coin is a "normal" 2015 2 Rupee with	
a major die crack.	
2015 India 2 Rupee PCGS MS-63	\$80
Struck on a 1 Rupee planchet.	

## **Fred Weinberg's Price List of Major Mint Error Coins & Currency**

2009 Jordan 5 Piastes PCGS MS-62	\$275
Struck on 2-1/2 Piastes plan. 2.6gm Stainless Steel (TR). Coin also has very strong cashed die on both sides. A rare country for any error. Coin comes with normal coin for comparison.	
2005 Malaysia 1 Sen PCGS MS-66	\$375
Struck on a 20 Sen Plan. (TR). Smaller Denom on larger planchet.	
1899-MO Mexico Silver Peso PCGS AU-55	\$175
Partial Collar Strike. KM 409.2 Ike Dollar size!	
1942 Netherland East Indies PCGS MS-63 BN	\$95
Off-Centered Punched Hole. KM317 (TR).	
2011 Pakistan 2 Rupee PCGS MS-62	\$235
Struck w/2010 Obv Rev. Die on Rev (TR). Struck with two different year obverse dies. This piece is brilliant.	
2011 Pakistan 2 Rupee PCGS MS-63	\$220
Struck w/2010 Obv Rev. Die on Rev (TR). Struck with two different year obv. dies. This piece altho' 63 has some spotting on 2011 side.	
1957 Rhodesia & Nyasaland PCGS MS-63 BN	\$135
Off-Centered Punched Hole-Rhodesia no longer exists as a country.	
OLYMPIC COIN DIES	
1995 \$1 Proof U.S. Mint Olympic Cancelled Coin Die	\$925
Olympic Runner design w/certificate. Only 205 Dies sold and only 315 coins were struck from this die.	
1996 \$1 Proof U.S. Mint Olympic Cancelled Coin Die	\$750
Reverse Proof Die w/certificate. Only 632 Dies sold and only 783 coins were struck from this die.	

# Fred Weinberg's Price List of Major Mint Error Coins & Currency

COINAGE DIES	
There are four basic types of "Out of Use" Dies. (See the June 2002 issue of "Coinage" for more information.)	
"Torched"-Face of the die is melted into "Blobs".	
Seen in the 1968-S/1969-S Dies sold as scrap in the San Francisco area in the late 1960's. Surface of the Die looks like "Lava"	
"Defaced"-The face of the Die is ground off flat. These are the dies I sell from the Denver Mint, and are the same type of Dies sold directly by the U.S. Mint in 1998, and from 1999-2008 for States Quarter Dies.	
"Cancelled" - Face of the die is "X"d across the die, leaving 4 quadrants of design showing. Some old rare U.S. Dies are found like this, plus one-time-only sale in 1997 of the 1996 U.S. Oly.Proof & Unc. \$1 & \$5 Gold Dies.	
"Unmarked" or "Uncancelled" - The rarest of Dies, and considered illegal to own if it's a modern U.S. Coinage Die!!	
The following De-Faced Dies are all from the Denver Mint	
They say either "D3" or "D4" on them (Denver 1993 or Denver 1994) and each one has a unique U.S. Mint Serial number on the base.	
Lincoln Cent De-Faced Die	\$15
Jefferson Nickel De-Faced Die	Sold Out
Roosevelt Dime De-Faced Die	\$15
Washington Quarter De-Faced Die	\$20
Kennedy Half Dollar De-Faced Die	\$40
World Cup Commemorative Half Dollar De-Faced Die (Has "WC" written w/grease pen on Die Face by U.S. Denver Mint)	\$55
1994 World Cup Commemorative Dollar De-Faced Die (Has "WC" written w/grease pen on Die Face by U.S. Denver Mint)	\$75



## Fred Weinberg's Price List of Major Mint Error Coins & Currency

CERTIFIED U.S. COIN BLANKS & PLANCHETS	
NOTE: BLANKS are punched out T-1 Process w/out upset rims	
PLANCHETS are 2nd Process w/upset raised rims	
NGC CERTIFIED PIECES DO NOT HAVE GRADES	
1794-1857 Half Cent Planchet NGC Certified	\$1,750
An extremely rare Certified Half Cent planchet Weighing 5.5 grams.	
Only 3-4 confirmed pieces known at most.	
(1795-1857) Large Cent PCGS XF-45 (2-A)	\$300
Type-II Planchet 166.7 grs. (TR). Scarce Large Cent planchet.	
(1795-1857) Large Cent PCGS AU-50	\$350
Type-II Planchet 166.7 grs. (TR). Scarce Large Cent planchet.	
N.D. Large Cent T-II Planchet PCGS MS-61 BN	\$450
Most are XF to AU , this is the highest grade I've seen.	
Buffalo Nickel NGC Mint Error	\$675
Buffalo Nickel T-II planchet 5.1 grams (TR)- RARE	
Jefferson Nickel Proof NGC Mint Error (*)	\$275
Proof Nickel planchet-1st Proof Nickel planchets certified. These	
are from the San Francisco Mint.	
90% Silver Wash. Quarter T-2 Plan. PCGS MS-62	\$200
Clad Wash. Quarter Proof Plan. (Rare) NGC	\$350
Clad Half T-1 Blank NGC	\$175
(No Rims) (Annealed)	
Clad Kennedy Half T-2 Planchet NGC	\$100
90% Silver Dollar T-1 Blank NGC (2-A)	\$1,350
For Morgan or Peace Silver Dollars.	

## **Fred Weinberg's Price List of Major Mint Error Coins & Currency**

90% Silver Dollar T-2 Planchet NGC (3-A)	\$1,150
For Morgan or Peace Silver Dollars.	
90% Silver Dollar T-2 Planchet PCGS MS-61	\$1,400
For Morgan or Peace Dollar	
(1878-1935) (TR) Silver \$1 T-II Planchet PCGS MS-62	\$1,500
Ex. Henry Hilgard- First time on the market in 30 yrs. Comes with 1985 Auction Lot Tag. Highest Graded	
Clad Ike \$1 NGC Mint Error (*)	\$165
Type-I Blank. Just punched from planchet strip. No burnishing or annealing done- Scarce	
Clad Ike \$1 NGC Mint Error (*)	\$145
Type-II Blank (TR). Punched, burnished and annealed- Makes this a Type-II Blank (no rim). (Not a Type II planchet)	
Clad SBA Dollar T-2 Planchet NGC (2-A)	\$120
Clad SBA Dollar PROOF T-2 Planchet NGC	\$750
A Very rare Proof Planchet! Two-Three known.	
Manganese Dollar T-1 Blank PCGS MS-61	\$150
For Sacagawea or Presidential Dollars	
Manganese Dollar T-1 Blank PCGS MS-63	\$275
For Sacagawea or Presidential Dollars-Highest Graded!	
(2000-2011) T-1 Blank ANACS CACHE MS-60 (*)	\$150
Detached Outer Layer Manganese Brass (TR). This is the thin outer shell of a \$1 Blank.	
(2000-2012) Sac/Pres Dollar ANACS MS-60 (*)	\$125
Manganese Blank Type I for Sac/Presidential dollars.	

## Fred Weinberg's Price List of Major Mint Error Coins & Currency

2000 Sacagawea Dollar (TR) Type-2 Planchet NGC (Certified during year 2000)	\$275
Sacagawea \$1 (TR) Type-2 Planchet PCGS MS-61 (Certified during year 2000)	\$300
2000 Sacagawea \$1 (TR) Type-2 Planchet NGC (2-A) (Certified before 2007 Presidential Dollars) Says "Sacagawea"	\$150
(2000-2010) Sac/Pres Dollar PCGS MS-62 (*) Type-II Upset Rim Manganese Dollar planchet. (Tag also reads "U.S. Mint Dollar").	\$65
(2000-2011) \$1 Sac/Pres. Dollar PCGS MS-62 (3-A) Clamshell Split Layer T-2 Manganese \$1 Plan (TR). Very Scarce!	\$175
U.S. Silver Commemorative \$1 Proof T-2 PCGS MS-62 Silver Proof T-2 Plan for U.S. Commem \$1(TR).Only 3-pcs. in PCGS.	\$400
U.S. Silver Commem. \$1 T-2 ANACS CACHE MS-60 (*) Same as the PCGS piece above, but "MS-60" Commem Silver Dollar size (etc.)- Tag reads.	\$100
<b>RAW "UNCERTIFIED" COINS BEGIN HERE</b>	
1856 Braided Hair Cent Fine Clipped planchet @ 12:00. With Blakesely effect opposite clip.	\$70
1997-D Roosevelt Dime BU Nice Straight End Clip 7:30-10:30 (2-A).	\$12
2005 Roos. Dime Partial Collar B.U. (*)	\$5
2003-D Roos. Dime Uncentered Broadstrike BU (*)	\$8

## Fred Weinberg's Price List of Major Mint Error Coins & Currency

2004-D Roos. Dime Uncentered Broadstrike BU (*)	\$8
2007 Roos. Dime Uncentered Broadstrike BU (*)	\$10
2012 Roosevelt Dime (*) CH BU	\$12
Uncentered Broadstrike & Partial Collar "Railroad Rim" strike State Quarters from 1999-2008 (not all States)	
2001 Rh. Island 25¢ - Full Cud @ 9:00 Scarce CH BU (*)	\$15
2001 Kentucky 25¢ -Reverse Cud @ 8:00 Scarce	\$25
2005 W. Virginia 25¢ Cud @ 4:00 rev. CH. B.U. (*)	\$15
2005 W. Virginia 25¢ Cud @ 8:00 rev. CH. B.U. (*)	\$15
2006 Colorado 25¢ Reverse Cud @ 2:30 B.U.	\$15
DOLLARS	
2007 John Adams Presidential \$1 (*)	\$200
Perfect Double Edge Lettering-Overlapped CH BU	
2007 John Adams Presidential \$1 (2-A)	\$225
Perfect Double Edge Lettering-Inverted CH BU	
2012-D Wm. H. Harrison Presidential \$1 BU	\$60
Defective flaking manganese layer on rims & edge @ 6:00-1st seen.	
Many other "Raw" & Uncertified Errors in stock.	
Too many to list - Please ask.	



## **Fred Weinberg's Price List of Major Mint Error Coins & Currency**

Blanks & Planchets "RAW"	
**Page 7 & 8 for Certified Blanks & Planchets**	
Copper Cent Planchet Type-II (Pre'83)	\$3
Copper Cent T-I (Blank) & T-II (Plan) 2 pc set(*)	\$10
Nickel Planchet Type-II (*)	\$8
Nickel Blanks T-I (Blank) & Type-II (Plan) 2 pc. set. (*)	\$20
Silver Dime Planchet Type-II (90% Silver) (2-A)	\$30
Clad Dime Type-I (Blank) & T-II (Plan) 2 pc. set(*)	\$5
Silver Quarter Planchet---(90% Silver)	\$150
Clad Quarter Planchet Type-II	\$5
90% Silver 50c Planchet Type-I Blank -One Pc. Only	\$225
Clad Half Dollar Blank T-I (4-A)	\$150
Clad Half Dollar Planchet T-II (*)	\$75
\$1 Ike Blank Type-I (*)	\$135
\$1 Ike Planchet Type-II (*)	\$100
\$1 Ike Type-I Blank) & T-II (Plan) 2 pc. Set(*)	\$225
\$1 SBA Blank Type-I. (6-A)	\$135
\$1 SBA Planchet Type-II (7-A)	\$75
\$1 Sac/Presidential Blank Type-I Manganese	\$150

## Fred Weinberg's Price List of Major Mint Error Coins & Currency

\$1 Sac/Presidential Planchet Type-II Manganese	\$35
\$1 Sac/President Outer Manganese Layer (thin Blank)	\$200
\$1 U.S. Silver Commem Type-II Planchet	\$65
U.S. MINT \$1,000 Kennedy Halves CANVAS BAG	\$15/ea.
Brand new full-size canvas bag (10 1/2" x 18") for new Ken. 50c	2/\$25
These bags are no longer used by the U.S. Mint for distribution for counting rooms. Great wall display, or use as a tote bag, or ? (NO COINS!)	
U.S. MINT \$2,000 SACAGAWEA \$1 CANVAS BAG	\$15/ea.
Brand new full-size canvas bag (10 1/2" x 18") for new Sac \$1's.	2/\$25
These bags are no longer used by the U.S. Mint for distribution for counting rooms. Great wall display, or use as a tote bag, or ? (NO COINS!)	



## PCGS CoinFacts

Your Online Reference for U.S. Coins

Welcome to PCGS CoinFacts. Our site includes comprehensive information on nearly 30,000 U.S. coins. It offers everything from basic, startup information for new collectors, to a wealth of detailed information the seasoned collector, buyer or seller can't afford to be without.

From the PCGS CoinFacts Home Page, you can access all denominations and major types of U.S. coins. The link will take you to a Series Page, which offers images of the finest PCGS-graded coin in the series, and a nice explanation including the history and why the coins in the series are important.

The real "business end" of PCGS CoinFacts begins with the individual coin pages, which are loaded with photos and information. To view the essential features of PCGS CoinFacts, you can click on them one at a time, or go straight to a particular feature of interest.



ANACS is the Collector's Choice because we know what counts: knowledge, integrity, and service. How much we value coin collecting is evident in our work.

The ANACS team enthusiastically works to advance coin collecting by offering unequaled expertise and developing new services.

This makes ANACS the choice of hobbyists, professional numismatists, and dealers. We are the coin grading service to contact when you want to know all the details about your coin's authenticity and grading.

**anacs.com**



**America's Oldest  
Grading Service™  
Established 1972**

# Mint Error News Price Guide

*- Updated April 2016 -*

This price guide is brought to you by Mint Error News. It has been compiled by many of the top major mint error dealers.

This price guide is a guide. Prices fluctuate due to the date, grade, eye appeal and how dramatic the striking error is. Rarity is also a factor. The price is sometimes based on the rarity and grade of the type of coin as well as how rare the error is. The price can also vary depending on whether two collectors are bidding for the same rare major mint error. When purchasing a mint error, it is important to use multiple resources to determine value, as there are many mint errors that do not fit into one category.

## Proof Errors (Updated April 2016)



Proof coins are struck by technicians who hand feed the blanks into special presses. They are produced, examined, and packaged using extreme quality control. It is very unusual to find major proof errors. A few broadstrikes, off-centers, double strikes in collars and off-metals have been known to be found in sealed proof sets. Proof errors are aggressively sought after by many error collectors.

A very small group of Proof errors recently came from a collection that was auctioned by the State of California. The U.S. Secret Service inspected and released this collection to the State of California determining that it was legal to own. The State of California then auctioned the collection and it has been dispersed since the sale.

Proof Errors

Denomination	Broadstrikes	Die Trials	Double/Triple Strikes	Off-Center Strikes	Partial Collar Errors
Proof Lincoln Cent	\$1,500 - \$2,500	N/A	\$4,000	\$1,500 - \$3,000	\$750
Proof Jefferson Nickel	\$2,500 - \$4,000	\$4,000	\$6,000	\$2,000 - \$5,000	\$1,000
Proof Clad Dime	\$3,000 - \$5,000	N/A	\$6,000	\$2,500 - \$5,000	\$1,250
Proof Clad Quarter	\$4,000 - \$5,000	N/A	\$7,500	\$3,000 - \$6,000	\$1,500
Proof Clad Half	\$5,000 - \$7,000	\$4,000 - \$5,000	\$7,500	\$4,000 - \$7,500	\$2,000



# Mint Error News Price Guide

## Broadstrikes (Updated April 2016)



A broadstruck error occurs when a coin is struck without the collar to form the rim and edge that is part of the shape of the coin. Coins can be broadstruck on either type one or type two planchets. When a coin is broadstruck the blank being fed into the collar will spread and distort outward as it is being struck because the collar isn't in the correct position to retain it.

Broadstrikes

Denomination	(Small) XF/AU	(Small) Unc	(Large) XF/AU	(Large) Unc
Large Cent	\$150	\$300	\$400	\$7500
Flying Eagle Cent (1857 - 1858)	\$1000	\$2500	\$1500	\$5000
Indian Cent	\$50	\$150	\$200	\$350
Lincoln Cent 1930 and Earlier	\$50	\$150	\$100	\$250
Lincoln Cent 1943 Steel	\$40	\$100	\$75	\$200
Proof Lincoln Cent	N/A	\$1500	N/A	\$2500
3 Cent Nickel	\$250	\$1000	\$400	\$1500
3 Cent Silver	\$1000	\$3500	\$1500	\$5000
Shield Nickel	\$400	\$1250	\$1000	\$2500
Liberty Nickel	\$150	\$300	\$200	\$600
Buffalo Nickel	\$100	\$200	\$200	\$500
Jefferson Nickel War Time	\$100	\$200	\$200	\$500
Proof Jefferson Nickel	N/A	\$2500	N/A	\$4000
Seated Half Dime Legend	\$1500	\$3500	\$2000	\$7500
Seated Dime Legend	\$1500	\$3500	\$2000	\$7500
Barber Dime	\$150	\$250	\$200	\$400
Mercury Dime	\$40	\$150	\$150	\$250
Proof Clad Dime	N/A	\$3000	N/A	\$5000
Barber Quarter	\$600	\$1250	\$1000	\$2500
Standing Liberty Quarter	\$2000	\$4000	\$3000	\$6000
Washington Quarter Silver	\$75	\$150	\$100	\$250
State Quarter	N/A	\$25	N/A	\$50
Proof Clad Quarter	N/A	\$4000	N/A	\$5000
Barber Half	\$2500	\$3500	\$3000	\$5000
Walking Liberty Half	\$3000	\$5000	\$4000	\$7000
Franklin Half	\$1500	\$3000	\$2000	\$4000
Kennedy Half Silver	\$150	\$250	\$200	\$300
Kennedy Half Clad	\$40	\$60	\$50	\$75
Proof Clad Half	N/A	\$3000	N/A	\$7000
Morgan Dollar	\$200	\$500	\$400	\$1000
Peace Dollar	\$4000	\$6000	\$6000	\$7500
18E Dollar	\$100	\$150	\$150	\$200
SBA Dollar	\$50	\$75	\$100	\$200
Sac Dollar	N/A	\$300	N/A	\$500

# Mint Error News Price Guide

## Partial Collars (Updated April 2016)



**P**artial collar strikes occur when there is a malfunction of the striking press. This causes the collar to be in an incorrect position. The lower die (usually the reverse die) is recessed in the collar. This allows the coin which is going to be struck to have a formed rim. After a coin is struck the lower die raises upwards, pushing the struck coin out of the collar and ejecting it. If a blank entering the collar is not properly seated, it will only have partial reeding as it is struck. The edge of this coin will have a partial reeding and a partial blank surface area. Recently, the Mint has installed new machinery where either die can be installed in either position.

Partial Collar Errors

Denomination	XF/AU	Unc
Large Cent	\$100	\$200
Flying Eagle Cent (1857 – 1858)	\$500	\$1,500
Indian Cent	\$35	\$100
Lincoln Cent 1930 and Earlier	\$30	\$100
Lincoln Cent 1943 Steel	\$25	\$50
Proof Lincoln Cent	N/A	\$750
3 Cent Nickel	\$150	\$500
3 Cent Silver	\$750	\$2,000
Shield Nickel	\$200	\$600
Liberty Nickel	\$50	\$150
Buffalo Nickel	\$50	\$75
Jefferson Nickel War Time	\$40	\$60
Proof Jefferson Nickel	N/A	\$1,000
Seated Half Dime Legend	\$750	\$1,500
Seated Dime Legend	\$500	\$1,250
Barber Dime	\$75	\$150
Mercury Dime	\$30	\$100
Proof Clad Dime	N/A	\$1,250
Barber Quarter	\$300	\$750
Standing Liberty Quarter	\$1,250	\$2,000
Washington Quarter Silver	\$40	\$75
State Quarter	N/A	\$15
Proof Clad Quarter	N/A	\$1,500
Barber Half	\$1,000	\$1,500
Walking Liberty Half	\$1,500	\$3,500
Franklin Half	\$500	\$1,000
Kennedy Half Silver	\$50	\$100
Kennedy Half Clad	\$20	\$30
Proof Clad Half	N/A	\$2,000
Morgan Dollar	\$150	\$300
Peace Dollar	\$1,000	\$2,500
IKE Dollar	\$50	\$100
SBA Dollar	\$20	\$30
Sac Dollar	N/A	\$100

# Mint Error News Price Guide

## Uniface Strikes (Updated April 2016)



Uniface coins occur when there have been two blank planchets in the press at the same time. The other blank will obstruct the die on either the obverse or reverse side, which will prevent it from having that design on the coin. There are many different variations involving uniface errors. In addition to having a 100% blank obverse or reverse, a coin can be struck off-center, with a blank planchet in the collar which will obstruct one side of the off-center. There are also mated pairs which have a combination of multiple errors which can include a side which is uniface. Finally, there are uniface strikes due to a die cap which adhered to the die, forming itself in the shape of a die and striking blank planchets.

Uniface

Denomination	Uniface Obverse XF	Uniface Obverse Unc	Uniface Reverse XF	Uniface Reverse Unc
Large Cent	\$1,500	\$4,000	\$1,250	\$3,000
Indian Cent	\$1,250	\$3,000	\$1,000	\$2,500
Lincoln Cent 1943 Steel	\$250	\$500	\$200	\$400
Lincoln Cent Wheat Ears	\$50	\$100	\$40	\$75
3 Cent Nickel	\$1,500	\$3,000	\$1,250	\$2,500
Shield Nickel	\$1,750	\$4,000	\$1,500	\$3,000
Liberty Nickel	\$2,000	\$3,500	\$1,500	\$3,000
Buffalo Nickel	\$2,250	\$3,000	\$2,000	\$2,500
Jefferson Nickel War Time	\$300	\$750	\$250	\$500
Jefferson Nickel	\$20	\$40	\$20	\$40
Barber Dime	\$2,000	\$3,000	\$1,500	\$2,500
Mercury Dime	\$1,500	\$2,500	\$1,250	\$2,250
Roosevelt Dime Silver	\$100	\$150	\$100	\$150
Roosevelt Dime Clad	\$40	\$75	\$35	\$60
Washington Quarter Silver	\$400	\$750	\$350	\$500
Washington Quarter Clad	\$100	\$125	\$75	\$100
State Quarter	N/A	\$300	N/A	\$500
Kennedy Half Clad	\$750	\$1,000	\$500	\$750
IKE Dollar	\$2,000	\$3,000	\$1,750	\$2,500
SBA Dollar	N/A	\$1,000	N/A	\$750
Sac Dollar	N/A	\$1,500	N/A	\$1,000

# Mint Error News Price Guide

## Bonded Coins

(Updated April 2016)



**B**onded coins occur when the feeder system, which supplies blank planchets to the coin press, malfunctions and jams. When this occurs, a struck coin is not properly ejected and another planchet is fed into the collar and is struck. This struck coin will land on top of the previously unejected strike. These coins will then crush and bond together. This may occur many times as more coins bond.

Bonded Coins

Denomination	2 Planchets	3-4 Planchets
Lincoln Cent Wheat Ears	\$2,500	-
Lincoln Cent Memorial	\$400	\$1,000
Jefferson Nickel	\$600	\$1,500
Roosevelt Dime Silver	\$1,000	-
Roosevelt Dime Clad	\$600	\$2,000
Washington Quarter Silver	\$2,500	-
Washington Quarter Clad	\$1,500	-
State Quarter	\$5,000	-
Kennedy Half Silver	\$10,000	-
Kennedy Half Clad	\$7,500	-
1/2 Dollar	-	-
SBA Dollar	-	-
Sac Dollar	-	-



# Mint Error News Price Guide

## Struck Fragments

(Updated April 2016)



The blanking press takes the coils of metal strips and punches blanks out of it, ejecting the webbing at the other end. The webbing is cut into small scrap pieces to be melted and recycled. Occasionally a scrap piece will be mixed with the blank planchets and struck by the dies. Struck fragments are rare in the larger denominations. These can be uniface or die struck both sides and are very rare on type coins.

Struck Fragments

Denomination	Uniface	Die Struck Both Sides
Indian Cent	-	\$4,000
Lincoln Cent Wheat Ears	\$750	-
Lincoln Cent Memorial	\$75	\$125
3 Cent Nickel	-	\$7,500
Jefferson Nickel	\$100	\$200
Roosevelt Dime Silver	\$300	\$750
Roosevelt Dime Clad	\$150	\$250
Washington Quarter Silver	\$750	-
Washington Quarter Clad	\$200	\$300
State Quarter	\$750	\$1,000
Kennedy Half Silver	-	-
Kennedy Half Clad	\$750	\$1,250
1/2 Dollar	-	-
SBA Dollar	\$2,000	\$4,000
Sac Dollar	-	-

# Mint Error News Price Guide

## Mated Pairs (Updated April 2016)



**M**ated pairs involve two individual coins with different errors that were struck together at the same time. Mated pair error combinations can be found in most error types and come in many shapes and sizes. Mated pairs can be overlapped when one of the coins is struck off-center on top of another coin. Another type involves a brockage where a struck coin was perfectly centered on a blank and restruck. Some mated pairs involve a die cap where the cap and brockage coin are discovered together, but this is a scarce find.

The rarest mated pair type involves two die caps (obverse and reverse) where both dies were capped at the same time and both die caps are mated. This last type is extremely rare and there are only a few known examples of mated pairs involving an obverse die cap and reverse die cap. There are several of these mated pairs known on Kennedy Halves including two dated 1976, which is the Bicentennial year. One of the most spectacular mated pairs involve two Barber Dimes, an obverse die cap mated to a reverse die cap and are unique.

Mated pairs can also involve an off-metal where a smaller blank planchet or smaller struck coin was struck on top of a larger coin. This type is extremely rare. The most spectacular pair known is a double struck Franklin Half which was mated to a Lincoln Cent. The Lincoln Cent blank was on top of the obverse of the struck Franklin Half. This pair was then struck together. It is unique.

### Mated Pairs

Denomination	Overlapping	Full Brockage	Die Cap	2 Die Caps
Lincoln Cent Wheat Ears	\$1,000	\$1,500	-	-
Lincoln Cent Memorial	\$200	\$300	\$500	\$750
Liberty Nickel	-	\$20,000	-	-
Jefferson Nickel (pre War Time)	-	-	-	\$15,000
Jefferson Nickel	\$350	\$500	\$650	\$1,000
Barber Dime	-	-	-	\$40,000
Roosevelt Dime Silver	\$1,000	\$2,000	\$1,500	-
Roosevelt Dime Clad	\$500	\$750	\$1,250	\$2,000
Washington Quarter Silver	\$2,000	-	-	-
Washington Quarter Clad	\$1,000	\$2,500	-	-
State Quarter	\$3,000	\$5,000	\$7,500	-
Kennedy Half Silver	-	-	\$10,000	-
Kennedy Half Clad	\$7,500	\$8,500	\$10,000	\$12,500
IKE Dollar	-	-	-	-
SBA Dollar	\$7,500	-	-	-
Sac Dollar	-	-	-	-

# Mint Error News Price Guide

## Transitional Errors (Updated April 2016)



A transitional error occurs when a coin is struck on a planchet from a previous year with different metal composition. The most famous transitional is a 1943 copper cent struck on a 1942 copper blank. 1943 cents were struck in steel because of the copper shortage during World War II. Other famous transitionals include 1965 coinage struck in silver instead of clad.

There are also transitionals struck on blanks for the next year. An example is 1964 coinage in clad instead of silver. Most recently, transitionals were discovered involving the SBA and Sacagawea Dollars of 1999 and 2000. There are eight known 1999 SBA Dollars struck on the brass planchet for the 2000 Sacagawea Dollar, and four known 2000 Sacagawea Dollars struck on a clad planchet for the 1999 SBA Dollar.

### Transitional Errors

Denomination	Off-Metal Planchet	Circulated	AU	Unc	Choice Unc – Gem
Lincoln Cent 1943 transitional	Copper Cent Planchet	\$40,000 +	\$60,000 +	\$85,000 +	\$100,000 +
Lincoln Cent 1944 transitional	Steel Cent Planchet	\$7,500	\$12,500	\$17,500	\$25,000
Lincoln Cent 1964 transitional	Clad Dime Planchet	\$2,500	\$4,000	\$5,000	\$6,500
Lincoln Cent 1965 transitional	Silver Dime Planchet	\$2,750	\$4,500	\$6,000	\$7,500
Roosevelt Dime 1964 transitional	Clad Dime Planchet	\$5,000	\$6,500	\$7,500	\$8,500
Roosevelt Dime 1965 transitional	Silver Dime Planchet	\$5,000	\$6,500	\$7,500	\$8,500
Washington Quarter 1964 transitional	Clad Quarter Planchet	\$5,000	\$6,500	\$7,500	\$8,500
Washington Quarter 1965 transitional	Silver Quarter Planchet	\$5,000	\$6,500	\$7,500	\$8,500
Kennedy Half 1964 transitional	Clad Half Planchet	\$5,000	\$6,000	\$7,000	\$9,000
Kennedy Half 1965 transitional	Silver Half Planchet	\$5,000	\$6,500	\$7,500	\$10,000
Kennedy Half 1964 transitional	Clad Quarter Planchet	\$5,000	\$6,000	\$7,500	\$8,500
Kennedy Half 1965 transitional	Silver Quarter Planchet	\$6,000	\$7,500	\$8,000	\$9,000
Ike Dollar Transitional	40% Silver Planchet	\$2,750	\$3,000	\$3,500	\$4,000
SBA Dollar Transitional	Sacagawea Planchet	N/A	N/A	\$12,500	\$15,000
Sacagawea Dollar Transitional	SBA Planchet	N/A	N/A	\$12,500	\$15,000

# Mint Error News Price Guide

## U.S. Gold Errors (Updated April 2016)



Major mint errors on U.S. Gold coins are the most prized category of all mint errors. Gold errors are very rare and a few have traded in the \$75,000 to \$100,000 range. Even a broadstruck U.S. Gold coin can easily sell for \$15,000 to \$30,000 compared to a broadstruck Cent, Nickel, Dime or Quarter which all sell for well under \$10. Many serious collectors of Gold Errors have to wait patiently for months and sometimes even years to acquire that one special piece for their collection.

The prices listed here are for common dates in AU-Unc. Better dates and errors that are in gem condition are worth considerably more.

### U.S. Gold Errors

Denomination	Partial Collar	Broadstruck	Clipped Planchet	3% - 5% Off-Center	10% - 15% Off-Center
\$1 Gold Type 1	\$5,000	\$10,000	\$5,000	\$12,500	\$20,000
\$1 Gold Type 2	\$6,000	-	\$12,500	-	-
\$1 Gold Type 3	\$4,000	\$7,500	\$5,000	\$10,000	\$20,000
\$2½ Liberty	\$5,000	\$7,500	\$4,000	\$10,000	\$15,000
\$2½ Indian	-	-	\$4,000	\$7,500	\$12,500
\$3 Indian	\$7,500	\$20,000	\$7,500	-	-
\$5 Liberty	\$6,000	\$12,500	\$6,000	\$15,000	\$25,000
\$5 Indian	-	-	\$6,000	\$15,000	\$30,000
\$10 Liberty	\$10,000	\$20,000	\$7,500	\$25,000	\$40,000
\$10 Indian	-	-	\$7,500	\$25,000	\$40,000
\$20 Liberty	\$10,000	\$25,000	\$10,000	\$30,000	\$150,000
\$20 St. Gaudens	-	-	\$10,000	-	-
\$5 American Eagle	\$1,000	\$2,000	\$750	\$2,500	\$3,500
\$10 American Eagle	\$1,250	\$2,500	\$1,000	\$3,000	\$3,500
\$25 American Eagle	\$1,500	\$3,000	\$1,500	\$3,500	\$5,000
\$50 American Eagle	\$2,000	\$4,000	\$2,000	\$5,000	\$7,500



# Mint Error News Price Guide

## Indents (Updated April 2016)



An indent error occurs when two blanks are fed inadvertently into the same collar, with one blank partly overlaying on top of the other. When the hammer die strikes this combination, the upper blank will be forced into the lower blank, creating a depression which is shaped similar to the upper blank. A scarce type of indent occurs when a blank intended for one denomination lands on top of a blank from a different denomination.

Denomination	10% - 25% XF	30% - 50% XF	10% - 25% Unc	30% - 50% Unc
Large Cent	\$300	\$600	\$750	\$2,000
Indian Cent	\$250	\$500	\$400	\$750
Lincoln Cent 1943 Steel	\$100	\$300	\$175	\$500
Lincoln Cent Wheat Ears	\$30	\$75	\$75	\$125
3 Cent Nickel	\$500	\$1,250	\$1,500	\$3,000
Shield Nickel	\$500	\$1,500	\$2,000	\$3,000
Liberty Nickel	\$400	\$1,000	\$750	\$1,500
Buffalo Nickel	\$300	\$1,000	\$600	\$2,000
Jefferson Nickel War Time	\$200	\$400	\$400	\$750
Jefferson Nickel	\$10	\$25	\$15	\$30
Barber Dime	\$1,000	\$2,000	\$1,500	\$3,000
Mercury Dime	\$300	\$750	\$500	\$1,500
Roosevelt Dime Silver	\$30	\$60	\$50	\$100
Roosevelt Dime Clad	\$10	\$20	\$15	\$30
Washington Quarter Silver	\$100	\$200	\$150	\$300
Washington Quarter Clad	\$25	\$50	\$35	\$100
State Quarter	N/A	N/A	\$200	\$350
Kennedy Half Clad	\$150	\$300	\$200	\$400
IKE Dollar	\$350	\$1,000	\$500	\$1,500
SBA Dollar	\$200	\$400	\$250	\$500
Sac Dollar	\$300	\$500	\$400	\$750

# Mint Error News Price Guide

## Die Caps (Updated April 2016)



**D**ie caps are caused when a struck coin sticks to the upper hammer die. Once the coin is struck to the die face, the reverse of the struck coin becomes the new die face. When the next blank is fed into the collar and the strike occurs, the reverse design of the adhered struck coin impresses itself into the new blank. This struck coin is a brockage strike. The coin that adhered to the upper die is known as a die cap. This process repeats itself as more coins are struck by the cap. The greater the number of strikes, the higher the cap metal will be pushed around the upper die shaft. Eventually, the cap brakes away from the die in the shape of a thimble.

Denomination	Obverse Cap XF	Obverse Cap Unc	Reverse Cap XF	Reverse Cap Unc
Large Cent	\$25,000	\$50,000	–	–
Indian Cent 1859	\$20,000	\$40,000	–	–
Indian Cent 1860-1864	\$15,000	\$40,000	–	–
Indian Cent 1864-1909	\$15,000	\$30,000	–	–
Lincoln Cent 1943 Steel	–	–	–	–
Lincoln Cent Wheat Ears	\$1,000	\$2,500	\$500	\$1,000
Lincoln Cent Memorial	\$150	\$200	\$50	\$100
2 Cent Piece	\$20,000	\$50,000	\$15,000	\$30,000
3 Cent Nickel	–	–	–	–
Shield Nickel	–	–	–	–
Liberty Nickel	\$12,500	\$25,000	–	–
Buffalo Nickel (1 Known)	–	\$30,000	–	–
Jefferson Nickel War Time	\$10,000	–	–	–
Jefferson Nickel	\$200	\$350	\$150	\$250
Barber Dime	\$15,000	\$30,000	\$12,500	\$20,000
Mercury Dime (2 Known)	\$5,000	\$7,500	–	–
Roosevelt Dime Silver	\$750	\$1,250	\$500	\$750
Roosevelt Dime Clad	\$200	\$400	\$200	\$250
Barber Quarter	\$20,000	\$50,000	–	–
Washington Quarter Silver	\$1,500	\$4,000	\$1,500	\$2,000
Washington Quarter Clad	\$350	\$750	\$250	\$350
State Quarter	N/A	\$1,000	N/A	\$600
Kennedy Half Silver	\$3,000	\$5,000	\$2,000	\$3,000
Kennedy Half Clad	\$2,000	\$3,500	\$1,500	\$2,000
Kennedy Half Bicentennial	\$2,500	\$4,000	\$1,750	\$2,500
IKE Dollar	–	\$30,000	–	–
SBA Dollar	N/A	\$15,000	N/A	\$10,000
Sac Dollar	N/A	\$15,000	N/A	\$15,000

# Mint Error News Price Guide

## Die Adjustment Strikes (Updated April 2016)



Die adjustment strikes are also known as die trials. This error occurs when a coin is struck from the press with very little pressure. When the press is being set up and adjusted, extremely weak strikes occur as the strike pressure reaches its optimum level. These die trials are destroyed after being struck and are rarely found in circulation.

Denomination	XF/AU	Unc
Indian Cent	\$1,000	\$2,000
Lincoln Cent Wheat Ear	\$200	\$300
Lincoln Cent 1943 Steel	\$750	\$1,500
Lincoln Cent Memorial	\$50	\$75
2 Cent	\$5,000	—
Liberty Nickel	\$3,000	\$5,000
Buffalo Nickel	\$4,000	\$7,500
Jefferson Nickel War Time	\$1,250	\$2,000
Jefferson Nickel	\$75	\$100
Proof Jefferson Nickel	N/A	\$4,000
Barber Dime	\$2,500	\$3,500
Mercury Dime	\$1,000	\$1,500
Roosevelt Dime Silver	\$350	\$500
Roosevelt Dime Clad	\$100	\$125
Seated Quarter	\$4,000	\$7,500
Standing Liberty Quarter	\$7,500	\$15,000
Washington Quarter Silver	\$500	\$750
Washington Quarter Clad (Pre-State)	\$125	\$150
State Quarter	N/A	\$200
Walking Liberty Half	\$2,500	\$5,000
Kennedy Half Silver	\$500	\$750
Kennedy Half Clad	\$200	\$250
Proof Kennedy Half 40% Silver	N/A	\$5,000
Proof Kennedy Half Clad	N/A	\$4,000
Morgan Dollar	\$4,000	\$7,500
Peace Dollar	\$7,000	\$10,000
IKE Dollar	\$300	\$400
IKE Dollar Bicentennial	\$350	\$500
SBA Dollar	N/A	\$500
Sac Dollar	N/A	\$1,000

# Mint Error News Price Guide

## Double Denominations (Updated April 2016)



One of the most expensive, popular, and desired types of errors are the double denominations. This error happens when a coin is struck on a previously struck coin of a smaller denomination. Examples are a cent on a struck dime, and a nickel on a struck cent. The most dramatic are those with considerable design visible from the original strike. There are a few known double denominations with different dates.

Denomination	Struck On	Circulated	AU	Unc
Lincoln Cent Wheat Ears	Mercury Dime	\$6,000	\$12,500	\$20,000
Lincoln Cent Wheat Ears	Roosevelt Dime	\$4,000	\$5,000	\$6,000
Lincoln Cent Wheat Ears	Foreign Coin	\$2,000	\$2,500	–
Lincoln Cent Memorial	Roosevelt Dime Silver	\$3,000	\$4,500	\$6,000
Lincoln Cent Memorial	Roosevelt Dime Clad	N/A	N/A	\$750
Lincoln Cent Memorial	Foreign Coin	N/A	\$600	\$750
Jefferson Nickel	Lincoln Cent Wheat Ears	\$1,500	\$2,000	\$2,500
Jefferson Nickel	Lincoln Cent Memorial	N/A	\$750	\$1,000
Jefferson Nickel	Foreign Coin	\$1,000	\$1,250	\$1,500
Jefferson Nickel	Roosevelt Dime	\$1,000	\$1,250	\$1,500
Roosevelt Dime Silver	Foreign Coin	\$4,000	\$5,000	\$7,500
Roosevelt Dime Clad	Foreign Coin	\$3,000	\$4,000	\$5,000
Washington Quarter Silver	Lincoln Cent Wheat Ears	\$3,000	\$4,000	\$6,000
Washington Quarter Silver	Lincoln Cent Memorial	\$2,500	\$3,000	\$3,500
Washington Quarter Silver	Foreign Coin	\$2,500	\$3,000	\$3,500
Washington Quarter Silver	Jefferson Nickel	\$3,000	\$4,000	\$6,000
Washington Quarter Silver	Roosevelt Dime Silver	\$2,500	\$3,000	\$3,500
Washington Quarter Clad	Lincoln Cent Memorial	\$2,500	\$3,000	\$3,500
Washington Quarter Clad	Foreign Coin	\$2,000	\$2,500	\$3,000
Washington Quarter Clad	Jefferson Nickel	\$2,500	\$3,000	\$3,500
Washington Quarter Clad	Roosevelt Dime Clad	\$2,000	\$2,500	\$3,000
State Quarter	Jefferson Nickel	N/A	\$5,000	\$7,500
State Quarter (Extremely Rare)	Any Other Denomination	N/A	\$10,000	\$12,500
Franklin Half	Lincoln Cent Wheat Ears	\$7,500	\$12,500	\$25,000
Kennedy Half (Extremely Rare)	Any Denomination	\$7,500	\$10,000	\$12,500
IKE Dollar (Extremely Rare)	Any Denomination	\$15,000	\$20,000	\$25,000
Sac Dollar	Maryland State Quarter	N/A	\$3,000	\$4,000



# Mint Error News Price Guide

## Brockages (Updated April 2016)



A brockage error can only occur when there are two coins involved. One of the coins involved will always be a struck coin which has not ejected properly. That struck coin will find its way back between the dies and will be struck next to a blank planchet which was fed into the collar. The image of that first struck coin will be impressed into that side of the blank planchet. The result will be a second coin which has images of the first coin impressed into it. Those images will be pressed into the coin and the image will be in reverse. This incuse sunken image is known as a brockage.

Denomination	50% Brockage XF	100% Brockage XF	50% Brockage Unc	100% Brockage Unc
Large Cent	\$600	\$1,000	\$3,000	\$10,000
Indian Cent	\$500	\$1,250	\$1,500	\$4,000
Lincoln Cent 1943 Steel	\$350	\$500	\$650	\$1,000
Lincoln Cent Wheat Ears	\$125	\$200	\$200	\$350
3 Cent Nickel	\$1,250	\$2,000	\$3,500	\$5,000
3 Cent Silver	\$2,000	\$3,000	\$3,000	\$6,000
Shield Nickel	\$1,500	\$2,500	\$3,500	\$5,000
Liberty Nickel	\$1,250	\$2,250	\$2,000	\$4,000
Buffalo Nickel	\$2,000	\$2,500	\$4,000	\$7,500
Jefferson Nickel War Time	\$250	\$750	\$750	\$1,500
Jefferson Nickel	\$50	\$75	\$50	\$150
Barber Dime	\$1,500	\$3,500	\$5,000	\$12,500
Mercury Dime	\$750	\$3,000	\$1,500	\$4,000
Roosevelt Dime Silver	\$100	\$200	\$150	\$250
Roosevelt Dime Clad	\$50	\$100	\$75	\$150
Washington Quarter Silver	\$200	\$500	\$500	\$1,000
Washington Quarter Clad	\$75	\$150	\$150	\$250
State Quarter	N/A	N/A	\$750	\$1,500
Kennedy Half Clad	N/A	N/A	\$650	\$1,500
IKE Dollar	\$1,500	\$4,000	\$3,000	\$7,500
SBA Dollar	N/A	N/A	\$500	\$2,500
Sac Dollar	N/A	N/A	\$1,500	\$5,000

# Mint Error News Price Guide

## Double & Multiple Strikes (Updated April 2016)



When a blank planchet is struck by the dies, the normal procedure is for the feeders to eject the struck coin out of the collar and into a chute. If there is a malfunction and the struck coin isn't ejected, it may receive a second or third strike by the dies. A multiple struck coin can happen in many ways and have many combinations of errors.

(Since each double and multiple strike can vary from being 10% off-center to 90% off-center, the prices listed below can be substantially more based on the percent off-center and dramatic overall look.)

Denomination	XF/AU	Unc
Large Cent	\$1,000	\$7,500
Indian Cent	\$600	\$1,000
Lincoln Cent 1930 and Earlier	\$850	\$1,500
Lincoln Cent 1943 Steel	\$400	\$1,500
Proof Lincoln Cent	N/A	\$4,000
3 Cent Nickel	\$2,000	\$3,500
Liberty Nickel	\$4,000	\$10,000
Buffalo Nickel	\$5,000	\$10,000
Jefferson Nickel War Time	\$750	\$2,000
Proof Jefferson Nickel	N/A	\$5,000
Barber Dime	\$4,000	\$10,000
Mercury Dime	\$3,500	\$8,500
Proof Clad Dime	N/A	\$5,000
Standing Liberty Quarter	\$15,000	\$50,000
Washington Quarter Silver	\$200	\$350
State Quarter	N/A	\$350 – \$750
Proof Clad Quarter	N/A	\$6,000
Walking Liberty Half	\$10,000	\$25,000
Franklin Half	\$6,500	\$10,000
Kennedy Half Silver	\$1,500	\$2,500
Kennedy Half Clad	N/A	\$750
Proof Kennedy Half Clad	N/A	\$7,500
Morgan Dollar	\$10,000	\$25,000
Peace Dollar	\$15,000	\$40,000
IKE Dollar	\$2,000	\$4,000 - \$7,500
SBA Dollar	\$1,000	\$2,500 – \$4,000
Sac Dollar	\$750	\$1,250 – \$2,500

# Mint Error News Price Guide

## Off-Center Strikes (Updated April 2016)



Off-center coins are one of the most common and best known types of errors. This happens when a blank which is supposed to be fed into the press, lands in the collar improperly. When this occurs only part of the blank is between the upper and lower dies. When the dies strike the blank, only that part will be struck with a design.

Denomination	10% - 15% XF/AU	25% - 60% XF/AU	10% - 15% Unc	25% - 60% Unc
Large Cent	\$400	\$2,500	\$1,000	\$10,000
Flying Eagle Cent (1857 – 1858)	\$2,500	\$10,000	\$5,000	\$20,000
Indian Cent	\$100	\$400	\$200	\$600
Lincoln Cent 1930 and Earlier	\$75	\$300	\$150	\$750
Lincoln Cent 1943 Steel	\$40	\$250	\$100	\$500
Proof Lincoln Cent	N/A	N/A	\$1,500	\$3,000
3 Cent Nickel	\$300	\$1,500	\$600	\$3,500
3 Cent Silver	\$1,000	\$5,000	\$2,000	\$7,500
Shield Nickel	\$750	\$2,500	\$1,000	\$7,500
Liberty Nickel	\$250	\$1,000	\$500	\$2,500
Buffalo Nickel	\$250	\$750	\$400	\$1,500
Jefferson Nickel War Time	\$100	\$500	\$200	\$1,000
Proof Jefferson Nickel	N/A	N/A	\$2,000	\$5,000
Seated Half Dime Legend	\$3,000	\$7,500	\$5,000	\$15,000
Seated Dime Legend	\$2,000	\$7,000	\$3,500	\$10,000
Barber Dime	\$300	\$1,500	\$500	\$2,500
Mercury Dime	\$100	\$750	\$150	\$1,250
Proof Clad Dime	N/A	N/A	\$2,500	\$5,000
Barber Quarter	\$1,500	\$5,000	\$2,500	\$10,000
Standing Liberty Quarter	\$5,000	\$20,000	\$20,000	\$40,000
Washington Quarter Silver	\$50	\$100	\$75	\$150
State Quarter	N/A	N/A	\$75	\$300
Proof Clad Quarter	N/A	N/A	\$3,000	\$6,000
Barber Half	\$4,000	\$10,000	\$6,000	\$20,000
Walking Liberty Half	\$4,000	\$12,500	\$7,500	\$20,000
Franklin Half	\$2,500	\$4,000	\$3,500	\$7,500
Kennedy Half Silver	\$100	\$500	\$250	\$1,000
Kennedy Half Clad	\$60	\$250	\$100	\$400
Proof Clad Half	N/A	N/A	\$4,000	\$7,500
Morgan Dollar	\$3,000	\$15,000	\$10,000	\$50,000
Peace Dollar	\$20,000	\$35,000	\$50,000	\$100,000
IKE Dollar	\$125	\$1,250	\$150	\$2,000
SBA Dollar	N/A	N/A	\$100	\$500
Sac Dollar	N/A	N/A	\$1,000	\$3,500
Presidential Dollar	–	–	\$1,500	\$5,000

# Mint Error News Price Guide

## Off-Metals (Updated April 2016)



Off-metal and wrong planchet errors occur when a correctly made blank from one denomination is accidentally fed into a press for another denomination. Examples are a nickel struck on a cent planchet and a cent struck on a dime planchet. The coin struck on an incorrect blank will weigh exactly what the denomination of that blank would have been. An even more dramatic wrong planchet error is a coin struck on a previously struck coin of a different metal.

Denomination	Off-Metal Planchet	Circulated	AU	Unc	Choice Unc – Gem
Indian Cent	Foreign Planchet	\$1,000	\$1,500	\$5,000	\$7,500
Indian Cent	Dime Planchet	\$20,000	\$30,000	\$50,000	\$75,000
Lincoln Cent Before 1919	Dime Planchet	\$4,000	\$6,500	\$10,000	–
Lincoln Cent Before 1919	Foreign Planchet	\$750	\$2,000	\$4,000	–
Lincoln Cent 1919 – 1940	Dime Planchet	\$2,000	\$2,500	\$4,000	\$6,000
Lincoln Cent 1919 – 1940	Foreign Planchet	\$500	\$1,000	\$1,500	\$2,500
Lincoln Cent 1943 Steel	Dime Planchet	\$1,500	\$2,500	\$3,500	\$7,500
Lincoln Cent 1943 Transitional	Copper Cent Planchet	\$75,000	100,000	\$150,000	\$200,000
Lincoln Cent 1944 Transitional	Steel Cent Planchet	\$30,000	\$50,000	\$100,000	\$150,000
Lincoln Cent Wheat Ears (1941-1964)	Dime Planchet	\$500	\$600	\$1,000	\$2,000
Lincoln Cent 1965 and Later	Dime Planchet	\$125	\$150	\$200	\$350
Lincoln Cent 1964 Transitional	Clad Dime Planchet	\$2,000	\$3,000	\$3,500	\$4,000
Lincoln Cent 1965 Transitional	Silver Dime Planchet	\$2,750	\$4,500	\$6,000	\$7,500
Shield Nickel	Foreign Planchet	\$7,500	\$12,500	–	–
Shield Nickel	Cent Planchet	\$15,000	\$25,000	\$40,000	\$60,000
Liberty Nickel	Foreign Planchet	\$400	\$750	\$1,250	\$2,000
Liberty Nickel	Cent Planchet	\$2,000	\$3,000	\$6,000	\$7,500
Buffalo Nickel	Foreign Planchet	\$2,500	\$7,500	\$12,500	–
Buffalo Nickel	Cent Planchet	\$2,000	\$4,000	\$6,000	\$8,000
Jefferson Nickel Before 1950	Cent Planchet	\$250	\$500	\$750	\$1,000
Jefferson Nickel 1950 and Later	Cent Planchet	\$125	\$150	\$200	\$250
Jefferson Nickel 1943	Steel Cent Planchet	\$1,000	\$2,000	\$3,000	\$5,000
Jefferson Nickel 1964 and Earlier	Silver Dime Planchet	\$200	\$300	\$350	\$400
Jefferson Nickel 1965 and Later	Clad Dime Planchet	\$150	\$200	\$225	\$250
Roosevelt Dime Silver	Foreign Planchet	\$2,000	\$2,500	\$3,000	\$3,500
Roosevelt Dime Clad	Foreign Planchet	\$1,500	\$2,000	\$2,250	\$2,500
Roosevelt Dime 1964 Transitional	Clad Dime Planchet	\$5,000	\$6,500	\$10,000	\$12,500
Roosevelt Dime 1965 Transitional	Silver Dime Planchet	\$5,000	\$6,500	\$7,500	\$8,500
Washington Quarter Silver	Cent Planchet	\$300	\$400	\$500	\$750
Washington Quarter Silver	Nickel Planchet	\$300	\$400	\$500	\$600
Washington Quarter Clad	Cent Planchet	\$250	\$300	\$400	\$500



# Mint Error News Price Guide

## Off-Metals (Updated April 2016)

Denomination	Off-Metal Planchet	Circulated	AU	Unc	Choice Unc – Gem
Washington Quarter Clad	Nickel Planchet	\$100	\$150	\$200	\$250
Washington Quarter	Silver Dime Planchet	\$300	\$400	\$500	\$650
Washington Quarter	Clad Dime Planchet	\$250	\$300	\$350	\$400
Washington Quarter 1964 Transitional	Clad Quarter Planchet	\$5,000	\$6,500	\$7,500	\$12,500
Washington Quarter 1965 Transitional	Silver Quarter Planchet	\$5,000	\$6,500	\$7,500	\$8,500
State Quarter	Cent Planchet	N/A	\$6,500	\$7,500	\$8,000
Delaware State Quarter	Nickel Planchet	N/A	\$500	\$650	\$750
All Other State Quarters	Nickel Planchet	N/A	\$1,000	\$1,250	\$1,500
State Quarter	Dime Planchet	N/A	\$5,000	\$5,500	\$6,000
Walking Half	Dime Planchet	N/A	N/A	N/A	\$50,000
Walking Half	Quarter Planchet	\$17,500	\$22,500	\$40,000	\$35,000
Walking Half	Foreign Planchet	\$10,000	\$15,000	\$30,000	\$25,000
Franklin Half	Cent Planchet	\$3,000	\$4,000	\$5,000	\$6,000
Franklin Half	Nickel Planchet	\$3,000	\$4,000	\$5,000	\$6,000
Franklin Half	Dime Planchet	\$3,500	\$4,500	\$5,500	\$6,500
Franklin Half	Quarter Planchet	\$600	\$750	\$1,000	\$1,250
Kennedy Half Silver 1964	Cent Planchet	\$1,000	\$1,250	\$1,500	\$2,000
Kennedy Half Silver 1964	Nickel Planchet	\$1,000	\$1,250	\$1,500	\$2,000
Kennedy Half Silver 1964	Dime Planchet	\$1,000	\$1,250	\$2,000	\$2,500
Kennedy Half Silver 1964	Quarter Planchet	\$400	\$500	\$600	\$750
Kennedy Half Clad	Cent Planchet	\$750	\$850	\$1,000	\$1,500
Kennedy Half Clad	Nickel Planchet	\$750	\$850	\$1,000	\$1,250
Kennedy Half Clad	Dime Planchet	\$750	\$850	\$1,000	\$1,400
Kennedy Half Clad	Quarter Planchet	\$350	\$400	\$450	\$500
Kennedy Half 1964 Transitional	Clad Half Planchet	\$3,500	\$4,500	\$6,000	\$10,000
Kennedy Half 1965 Transitional	Silver Half Planchet	\$5,000	\$6,500	\$7,500	\$10,000
Kennedy Half 1964 Transitional	Clad Quarter Planchet	\$3,000	\$4,000	\$6,000	\$7,500
Kennedy Half 1965 Transitional	Silver Quarter Planchet	\$7,000	\$8,000	\$9,000	\$10,000
Ike Dollar	Cent Planchet	\$7,500	\$10,000	\$12,500	\$15,000
Ike Dollar	Nickel Planchet	\$10,000	\$12,500	\$15,000	\$20,000
Ike Dollar	Dime Planchet	\$7,500	\$8,500	\$10,000	\$12,500
Ike Dollar	Quarter Planchet	\$7,000	\$10,000	\$12,500	\$15,000
Ike Dollar	Half Planchet	\$1,600	\$1,750	\$2,000	\$3,000
Ike Dollar	Foreign Planchet	\$900	\$1,000	\$1,250	\$1,500
Ike Dollar Transitional	40% Silver Planchet	\$2,750	\$3,000	\$3,500	\$5,000
SBA Dollar	Cent Planchet	N/A	\$1,750	\$3,000	\$5,000
SBA Dollar	Nickel Planchet	N/A	\$6,000	\$7,000	\$8,000
SBA Dollar	Dime Planchet	N/A	\$6,000	\$7,000	\$10,000
SBA Dollar	Quarter Planchet	N/A	\$600	\$850	\$1,000
Sac Dollar	Cent Planchet	N/A	\$12,500	\$15,000	\$20,000
Sac Dollar	Nickel Planchet	N/A	\$12,500	\$15,000	\$20,000
Sac Dollar	Dime Planchet	N/A	\$8,000	\$15,000	\$20,000
Sac Dollar	Quarter Planchet	N/A	\$1,500	\$2,000	\$2,500

# Mint Error News Price Guide

## Counterbrockages

(Updated April 2016)



A counterbrockage error involves a cap die and a previously struck coin. When a cap die strikes a previously struck coin, the obverse design from that struck coin will be impressed into the cap. The result will be a design where the cap face will be an incuse brockage. When a new blank is struck by this cap die with an incuse brockage image, the obverse will have a raised and spread image from that incuse design of the cap. This brockage impression is known as a counterbrockage.

Denomination	Circulated	AU	Unc	Choice Unc - Gem
Indian Cent	\$1,000	\$1,500	\$2,000	\$2,500
Lincoln Cent 1943 Steel	\$500	\$750	\$1,500	\$2,000
Lincoln Cent Wheat Ears	\$200	\$200	\$300	\$500
Lincoln Cent Memorial	\$40	\$50	\$75	\$100
Shield Nickel	\$1,500	\$2,000	\$4,000	\$5,000
Liberty Nickel	\$1,500	\$2,000	\$4,000	\$5,000
Jefferson Nickel	\$50	\$100	\$150	\$200
Barber Dime	\$3,000	\$5,000	\$7,500	\$10,000
Roosevelt Dime Silver	\$300	\$500	\$750	\$1,000
Roosevelt Dime Clad	\$100	\$150	\$250	\$300
Washington Quarter Silver	\$500	\$1,000	\$1,500	\$2,000
Washington Quarter Clad	\$100	\$200	\$300	\$400
State Quarter	N/A	\$750	\$1,250	\$1,500
Kennedy Half Silver	\$1,250	\$2,000	\$3,000	\$4,000
Kennedy Half Clad	\$500	\$750	\$1,250	\$1,500
SBA Dollar	N/A	\$2,000	\$3,000	\$4,000

# Mint Error News Price Guide

## Fold-Over Strikes (Updated April 2016)



A fold-over coin is one of the most dramatic types of errors. It occurs when the blank is standing vertically between the dies. During the strike, the force is so great that it bends and folds the blank. These fold-overs can be on-center or off-center, and come in many different shapes. There are a few fold-overs with multiple errors, either with an additional strike or fold-over. Denominations above quarters are very scarce.

Denomination	AU	AU Dated	Unc	Unc Dated
Indian Cent Memorial Copper	\$1,000	\$1,250	\$1,250	\$1,500
Lincoln Cent Memorial Zinc	\$750	\$1,000	\$1,000	\$1,250
Jefferson Nickel	\$2,500	\$3,000	\$3,000	\$4,000
Roosevelt Dime Silver	\$4,000	\$5,000	\$5,000	\$6,000
Roosevelt Dime Clad	\$3,000	\$3,500	\$3,500	\$4,500
Washington Quarter Silver	\$4,000	\$5,000	\$5,000	\$10,000
Washington Quarter Clad	\$3,500	\$4,000	\$4,000	\$5,000
State Quarter	\$5,000	\$6,000	\$6,000	\$8,500

# Mint Error News Price Guide

## Martha Washington Test Pieces (Updated April 2016)



There is one set of a Dime, Quarter and Half struck by Martha Washington dies that are permanently housed in the Smithsonian Institute, embedded in blocks of lucite. According to United States Pattern and Related Issues, by Andrew W. Pollock III, “the only trial pieces purported to have survived metallurgical testing in 1965 were the Dime, Quarter Dollar, and Half Dollar equivalent strikes in copper-nickel clad over copper.”

Mike Byers’ discovery of the Martha Washington Test Piece on a copper-zinc Cent planchet struck 10% off-center with a uniface reverse was a front page Coin World article on August 7th, 2000.

Denomination	Unc	Choice	Gem
Martha Cent	\$4,000	\$5,000	\$6,000
Martha Nickel	\$4,500	\$6,000	\$7,500
Martha Dime	\$7,500	\$10,000	\$12,500
Martha Quarter	\$5,000	\$7,500	\$10,000
Martha Half Dollar	\$5,000	\$7,500	\$10,000
Martha Dollar (SBA Planchet)	\$10,000	\$12,500	\$15,000
Martha Dollar (Sac Planchet)	\$6,000	\$7,500	\$10,000





# COINWeek

## **The CoinWeek Mission:**

Our mission is a simple one, to inform, entertain and educate our readers about coins, paper money, and every other area of numismatic pursuit.

We accomplish that mission by having the best numismatic writers and contributors in the industry. In fact since 2011, CoinWeek writers and contributors have won over 40 Numismatic Literary Guild Awards and CoinWeek itself has been named the “Best Online News Site” for the last 4 years straight.

CoinWeek provides the facts that collectors can use. We tell the back stories about coins and the people that collect and sell them. We provide perspective commentary and analysis on the issues that effect the industry and the hobby we love.... **And we do it all for FREE.**

## **Why You Should Read CoinWeek:**

- CoinWeek is independent and unafraid of tackling important issues that face the hobby.
- CoinWeek and its representatives attend almost all of the major Coin & Currency conventions in order to bring the most current print and video news from the numismatic marketplace to our readers.
- CoinWeek offers innovative coverage of modern coin issues, auction houses, and the world mints. We go beyond the surface information you usually find elsewhere.
- CoinWeek maintains the largest numismatic video library accessible on the web to offer our subscribers the most comprehensive educational video available with information about rare coin and currency news, seminars, interviews, collecting tips and more.

**c o i n w e e k . c o m**



*New Edition of Bart's United States Paper Money Errors Available Now*

# UNITED STATES PAPER MONEY ERRORS

A Comprehensive Catalog & Price Guide



**DR. FREDERICK J. BART**

FOURTH EDITION

Comprehensive Catalog and Price Guide makes first appearance since 2008

By Coin & Currency Institute....

After a lapse of seven years, a new edition of United States Paper Money Errors, Fred Bart's ground-breaking book is now available. The fourth edition is more than just an update to the third: Bureau of Engraving and Printing (BEP) errors have been added, nearly all the illustrations have been changed, there is a rarity guide for each note—which additionally are now priced in four grades (EF, AU, Choice CU and Gem CU)—and, for the first time, there is a section showing some notes in color.

This has always been an enormously popular book, not only among established collectors but also with newcomers seeking to learn more about their "find." There is no other book like it on the market. More than a price guide, its 296 pages contain a wealth of information on what to look for and what mistakes to avoid. It is a necessity for all dealers, collectors, and anyone who comes into regular contact with paper money.

- The new and improved must-have book for U.S. paper money errors
- Rarity guide for each note
- Prices in four conditions
- The universally-used Friedberg Numbering System™—The standard method for describing U.S. currency
- Invaluable appendices with data found nowhere else
- Hundreds of photos
- 296 pages, 20+ with new info
- Convenient & handy 5.75 x inch format

# MIKE BYERS INC

MIKEBYERS.COM

U.S. & WORLD MAJOR MINT ERRORS

1990-D Lincoln Cent

Struck on a 3.1 gram Copper Planchet

Pre-1983 Cent Planchet

PCGS MS 64 Brown

UNIQUE TRANSITIONAL

\$25,000



# MIKE BYERS INC

P.O. Box 26807, LAS VEGAS, NV 89126

MIKE@MIKEBYERS.COM | 714-914-6415



LIFE MEMBER  
#3675



AUTHORIZED  
DEALER



NUMISMATIC  
GUARANTY  
CORPORATION  
OF AMERICA  
AUTHORIZED  
MEMBER/DEALER



MINTERRORNEWS  
MAGAZINE  
Contributor  
to  
COINWEEK  
Publisher & Editor

Contributor  
to  
COINWEEK



MEMBER FIRM  
Member A71



Member  
BYRS



World's Greatest  
Mint Errors  
Author



# Sullivan Numismatics

\$1 1884-O Morgan Dollar Struck 20% Off-Center  
NGC MS-61

**\$32,000**



2000-P Sacagawea Dollar Shattered Die Reverse &  
Multi-Struck Broadstrike NGC MS-64

**\$12,500**



Proof Clad 1976-S Bicentennial Half Double-Struck  
Off-Center NGC PF-66 Ultra Cameo

**\$9,000**



1999-P Connecticut Quarter Multi-Struck  
on Feeder Finger Tip NGC MS-66

**\$7,000**



PO Box 80459  
Charleston, SC 29416-0459

Jon P. Sullivan  
931-797-4888  
[jon@sullivannumismatics.com](mailto:jon@sullivannumismatics.com)



# Rich Schemmer

specializing in rare error coins for the collector

[richerrors.com](http://richerrors.com)

[Richerrors@aol.com](mailto:Richerrors@aol.com)



## **We Are Strong Error Buyers:**

**We are ALWAYS looking to BUY better U.S. mint error coins. Whether a single coin or bulk lots, we offer some of the highest prices paid in today's error market. (no doubled dies, mint mark varieties, or other minor or damaged errors, please). We are looking for high-end dramatic error coins for our customers.**

**For our highest cash offer, simply ship the error coins to us at the address below. Be sure to include a name and a day-time telephone number where we can reach you.**

**Have that dramatic error you may want to sell? Contact us!!**

### **Contact Information :**

**Rich Schemmer Error Coins**

**P.O. Box 204**

**Franklin Square, New York 11010**

**Tel/Fax: 1-516-437-5083**

**E-mail: [RichErrors@aol.com](mailto:RichErrors@aol.com)**



# NORTHEAST NUMISMATICS INC. RARE COINS · PERSONAL SERVICE

Northeast Numismatics has a million dollar plus inventory of over 3,500 certified United States and world coins. We carry every area of U.S. coinage from colonials through rare gold including proof and mint state type, commemoratives, silver dollars and much more. We also offer an extensive inventory of world coins.

Northeast Numismatics  
10 Concord Crossing, Ste. 220  
Concord, MA 01742  
800-449-2646  
[www.northeastcoin.com](http://www.northeastcoin.com)

High quality "fresh" coins are what we are known for and take pleasure in offering. We constantly are hearing from our customers about our excellent prices and high customer service. 2003 is our 39th year of business, so order with complete confidence. Also, please keep in mind that we are always buying coins of all kinds, certified and uncertified, to fill our want lists.

# Harry E. Jones

## Rare Coins & Currency

Sell Harry Your Mistakes!!

Leading Dealer in Error Currency For Over 30 Years. Buying and Selling the Finest in Error Currency. Especially Want Errors on National Currency. Also Buying Uncut Sheets of Nationals Large and Small.

[harryejonescoinsandcurrency.com](http://harryejonescoinsandcurrency.com)

440-234-3330

LM ANA PNG PCDA





# *Buying and Selling*

**U.S. & World Coins**

**Specializing in Patterns, Errors,  
Pioneer Gold & Colonials**

Contact me or see me at most major coin shows.

**Andy Lustig**

Phone: (845) 321-0249  
[andylustig@earthlink.net](mailto:andylustig@earthlink.net)

P.O. Box 806  
Nyack, NY 10960





# Errorscope Magazine

Bi-monthly magazine for CONECA members.

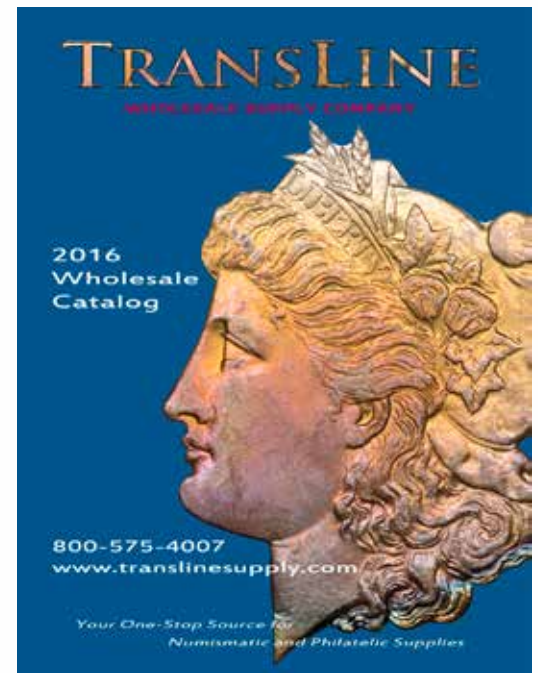
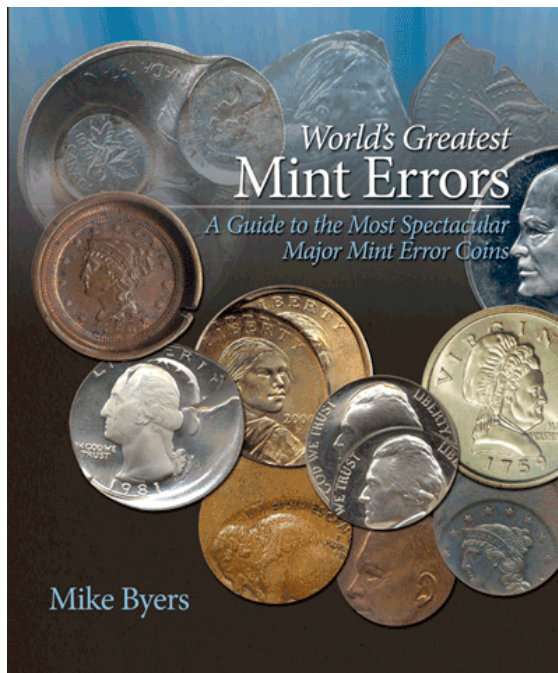


To join CONECA or to renew your membership visit:

**[conecaonline.org](http://conecaonline.org)**

Transline Wholesale Supply Company

Wholesale Only 1-800-575-4007



**Bart Crane**

**translinesupply.com**

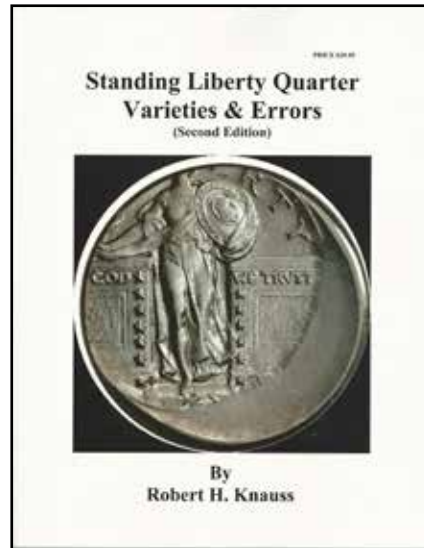
**CALL TOLL FREE: (800) 575-4007**

**Business Hours**

**Monday - Friday: 7:30AM - 5:30PM PST**

# Standing Liberty Quarters: Varieties & Errors (Second Edition)

by Robert H Knauss



Visit [amazon.com](http://amazon.com) to order.





# MIKE BYERS INC

MIKEBYERS.COM

U.S. & WORLD MAJOR MINT ERRORS

1976-S Jefferson Nickel Obverse Impression  
Struck Into Center of \$1 Planchet  
(Proof Nickel/Dime Mule)

NGC - UNIQUE

\$150,000



# MIKE BYERS INC

P.O. Box 26807, LAS VEGAS, NV 89126

MIKE@MIKEBYERS.COM | 714-914-6415



LIFE MEMBER  
#3675



AUTHORIZED  
DEALER



NUMISMATIC  
GUARANTY  
CORPORATION  
OF AMERICA  
AUTHORIZED  
MEMBER/DEALER



MINT ERROR NEWS  
MAGAZINE  
Contributor  
to  
COINWEEK  
Publisher & Editor

Contributor  
to  
COINWEEK



MEMBER FIRM  
Member A71



Member  
BYRS



World's Greatest  
Mint Errors  
Author



**JIM'S COINS & STAMPS**  
 702 N. Midvale Blvd. B-2  
 Madison, WI 53705  
 (608) 233-2118

# ERROR AUCTIONS

[jimscoins.net](http://jimscoins.net)

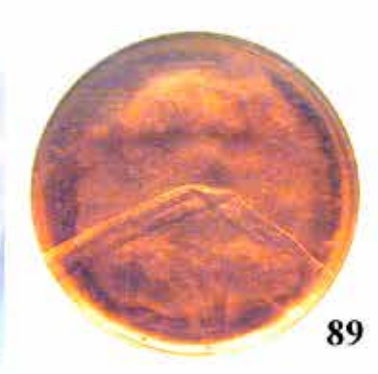
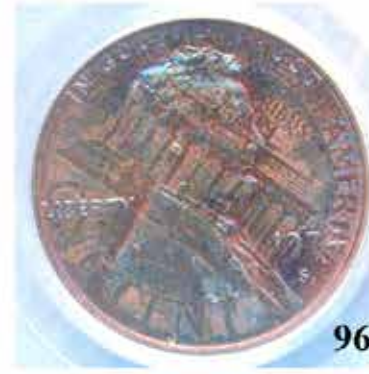
Len Roosmalen



James Essence



A few examples of lots from auction J-66:



# MINT *ERROR* NEWS GLOSSARY



1965 Dime Struck On A Silver Planchet

## What are Transitional Errors?

A transitional error occurs when a coin is struck on a planchet from a previous year with different metal composition. The most famous transitional is a 1943 copper cent struck on a 1942 copper blank. 1943 cents were struck in steel because of the copper shortage during World War II. Other famous transitionals include 1965 coinage struck in silver instead of clad.

There are also transitionals struck on blanks for the next year. An example is 1964 coinage in clad instead of silver. Most recently, transitionals were discovered involving the SBA and Sacagawea Dollars of 1999 and 2000. There are eight known 1999 SBA Dollars struck on the brass planchet for the 2000 Sacagawea Dollar, and four known 2000 Sacagawea Dollars struck on a clad planchet for the 1999 SBA Dollar.



# 2016 Coin Shows



**Visit Mike Byers at the following shows:**

January 7 - 10	FUN Orlando, Florida
February 4 - 6	Long Beach Coin & Collectibles Expo Long Beach, California Table #1039
February 17 - 20	PCGS Members Only Show Las Vegas, Nevada
March 3 - 5	ANA National Money Show Dallas, Texas
March 31 - April 2	Baltimore Spring Show Baltimore, Maryland
April 27 - 30	Central States Schaumburg, Illinois
May 13 - 15	Las Vegas Numismatic Society Coin Show Las Vegas, Nevada <i>Stop By Our Table!</i>
May 18 - 21	PCGS Members Only Show Las Vegas, Nevada
June 9 - 11	Long Beach Coin & Collectibles Expo Long Beach, California Table #1039
June 29 - July 2	PCGS Members Only Show Las Vegas, Nevada
July 7 - 9	FUN Orlando, Florida
July 14 - 16	Baltimore Summer Expo Baltimore, Maryland
August 9 - 13	ANA World's Fair of Money Anaheim, California <i>Stop By Our Table!</i>
September 8 - 10	Long Beach Coin & Collectibles Expo Long Beach, California Table #1039
September 23 - 25	Las Vegas Numismatic Society Fall Coin Show Las Vegas, Nevada <i>Stop By Our Table!</i>
November 3 - 6	Baltimore Winter Expo Baltimore, Maryland
December 9 - 11	The Vegas Show Las Vegas, Nevada <i>Stop By Our Table!</i>

# Fred Weinberg & Co.

Dealer in Major Mint Error Coins & Currency



[fredweinberg.com](http://fredweinberg.com)



## BUYING MAJOR ERROR COINS & CURRENCY

If you have a single major mint error coin, either a recent issue or an older type coin, or 1,000 Off-Center Cents, please contact us. We stock over 60,000 Major Mint Error Coins and constantly need to purchase Major Error Coins for our clientele (please note that we do not deal in or buy Die Varieties, Damaged Coins, Doubled Dies, Filled Dies, or Die Cracks).

We do buy Major Mint Errors - such as Off-Center, Off-Metals, Double Strikes, Clad Layers missing, Die Caps, Double Denomination, etc.

Because of the many differences in each Error Coin we request that you send scans of your coin(s) to us for our examination and firm offer.

Postal Correspondence:

Telephone/Fax:

16311 Ventura Blvd.

Phone: (818) 986-3733

Suite #1298

Toll-free: (800) 338-6533

Encino, California 91436

Fax: (818) 986-2153

e-mail: [fred@fredweinberg.com](mailto:fred@fredweinberg.com)

# fredweinberg.com

# MIKE BYERS INC

MIKEBYERS.COM

U.S. & WORLD MAJOR MINT ERRORS

## Buying & Selling Rare Coins



- Certified by PCGS & NGC
- Rare U.S. Gold Coins
- U.S. Patterns & Die Trials
- U.S. & World Major Mint Errors



**Mike Byers is a World Renowned Expert on U.S. & World Major Mint Errors and an Award Winning Author**

He literally “wrote the book” *World’s Greatest Mint Errors*, which received the Numismatic Literary Guild’s award for Best World Book. He is the publisher & editor of *Mint Error News Magazine & Website* which is widely regarded as the most informative and comprehensive resource for Major Mint Errors. He was an ANACS consultant for Major Mint Errors and has written articles for the *Coin Dealer Newsletter*. Mike Byers and his discoveries have been featured on the front page of *Coin World* numerous times. Mike Byers Inc carries a multi-million dollar world class inventory of major mint errors, die trials and numismatic rarities. His extensive personal collection of major mint errors is being authenticated and certified by NGC and designated on the insert as **THE BYERS COLLECTION**.

# MIKE BYERS INC

P.O. Box 26807, LAS VEGAS, NV 89126

MIKE@MIKEBYERS.COM | 714-914-6415



Contributor to COINWEEK

