

MINT ERROR NEWS MAGAZINE

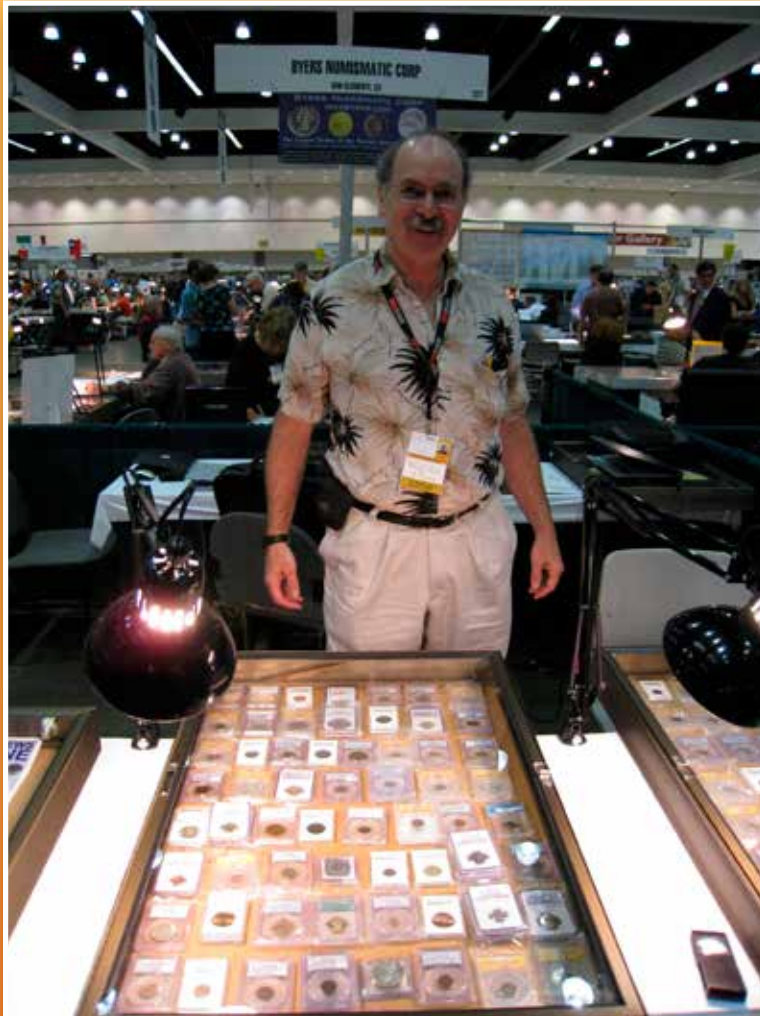


Bringing the latest mint error news to the collector. Also featuring Die Trials, Test Pieces, Numismatic Rarities, Currency Errors and Discoveries from the U.S. Mint & the BEP.



minterrornews.com

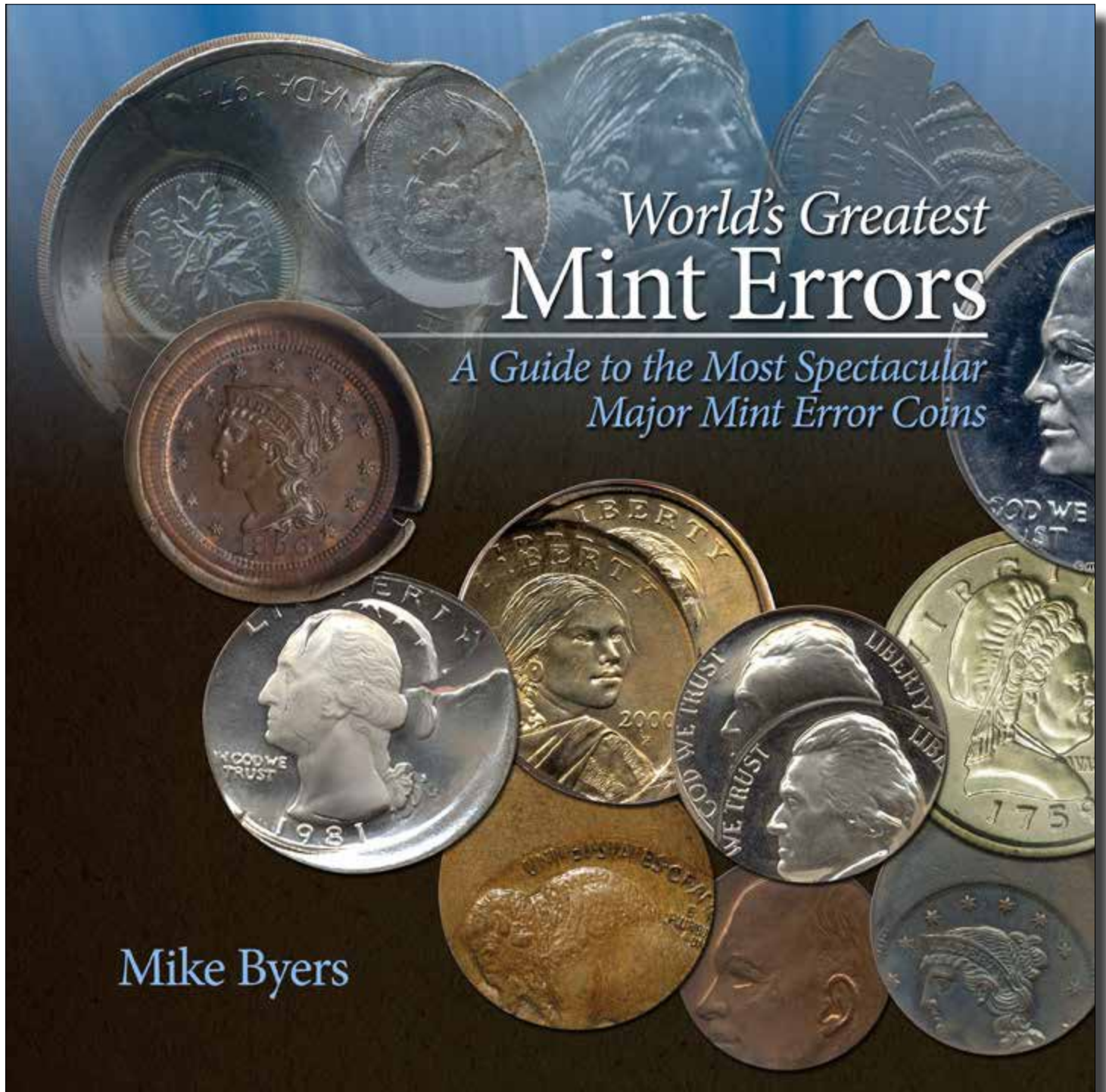
In Memoriam: Allan Levy



22 Page
Price Guide
Inside!

Issue 34 • Fall/Winter 2011
A Mike Byers Publication

Now Available From Amazon.com and Zyrus Press



World's Greatest Mint Errors

*A Guide to the Most Spectacular
Major Mint Error Coins*

Mike Byers

MINT ERROR NEWS MAGAZINE

Bringing the latest mint error news to the collector.



Issue 34 • Fall/Winter 2011

Publisher & Editor
Mike Byers

Design & Layout
Sam Rhazi

Contributing Editors

Fred Weinberg

Contributing Writers

Heritage Auction Galleries
Dave Camire
David W. Lange / NGC

Advertising

The ad space is sold out. Please e-mail editor@minterrornews.com to be added to the waiting list.

Subscriptions

We are not offering a paid subscription at this time. Issues of Mint Error News Magazine are mailed to our regular customers and coin dealers that we are associated with. Issues can be downloaded for free at minterrornews.com

Mint Error News is the official publication of minterrornews.com. All content Copyright 2010 *Mint Error News*. P.O. Box 5090, San Clemente, CA 92674. All rights reserved. No part of this magazine may be reproduced in any form without the expressed written permission of the publisher. Opinions expressed in this publication do not necessarily represent the viewpoints of *Mint Error News*. This publication is distributed with the understanding that the information presented herein is from various sources for which there can be no warranty or responsibility by the publisher as to accuracy, price or completeness. *Mint Error News* accepts unsolicited manuscripts, artwork, and photographs for publication. Direct editorial submissions to editor@minterrornews.com or P.O. Box 5090, San Clemente, CA 92674. All unsolicited material will not be returned.
PRINTED IN THE U.S.A.

Mint Error News Magazine

Issue 34 • Fall/Winter 2011

- Table of Contents -

Mike Byers' Welcome	4
In Memoriam: Allan Levy	5
USA Coin Album: It's An Error To Call A Variety An Error	7
Prices Realized In The April 2011 Rosemont CSNS Heritage Auction	12
Mint Errors Featured In The Upcoming June 2011 Long Beach Heritage Auction	22
Mint Error News Price Guide	28
Jim's Coins Auction Catalog - Mail Bid Sale J-45	67
Mint Error News Glossary	89

MINT **ERROR** NEWSTM MAGAZINE

Bringing the latest mint error news to the collector.



Mike Byers, Publisher & Editor, Welcomes You!

Welcome to Mint Error News Magazine, bringing the latest mint error news and information to the collector. This is our seventh year bringing you both an online PDF magazine and the Mint Error News website. There are now over 900 articles, features, discoveries, news stories with mint error related info from the United States and around the World. Our website, minterrornews.com, has become the most popular and informative Internet resource for mint errors and is read by thousands of dealers and collectors.



Mike Byers (mikebyers.com) has been a Professional Numismatist since 1978. He is President of one of the largest Numismatic corporations dealing in U.S. Gold Coins, Patterns and Rarities certified by PCGS and

NGC. He is a life member of ANA since 1985, a charter member of NGC and a featured dealer/member of PCGS. He is a founder member of the California Coin & Precious Metals Association. He is also a life member of

the Central States Numismatic Society and the Florida United Numismatists. He is member A71 in the Certified Coin Exchange (CCE) and a member of CoinPlex (BYRS). Mike Byers was a consultant to ANACS for Mint Errors from 2000 through 2006. In 2009, Mike Byers published his first book, *World's Greatest Mint Errors*, which won the NLG award for Best World Coin Book at the 2009 ANA.



Fred Weinberg is the President of Pacific Rim Numismatics (DBA Fred Weinberg & Co.). He is a highly respected numismatist, with 35 years of full time experience in the rare coin marketplace. His professional associations include the American Numismatic Association (ANA) (38 years), the Professional Numismatist Guild (PNG) (31 years), The Industry Council for Tangible Assets (ICTA) (21 years) and The Numismatic Literary Guild. He is a past President of the Professional Numismatist Guild (1999-2001).

Mint Error News is sponsored by Mike Byers and several other mint error dealers including Allan Levy (alscoins.com) and Fred Weinberg (fredweinberg.com). Additional sponsors are Heritage Auction Galleries, CoinLink, CoinFacts.com and uspatterns.com. We encourage collectors and dealers to submit articles and photos of major mint errors that we may feature on the website.

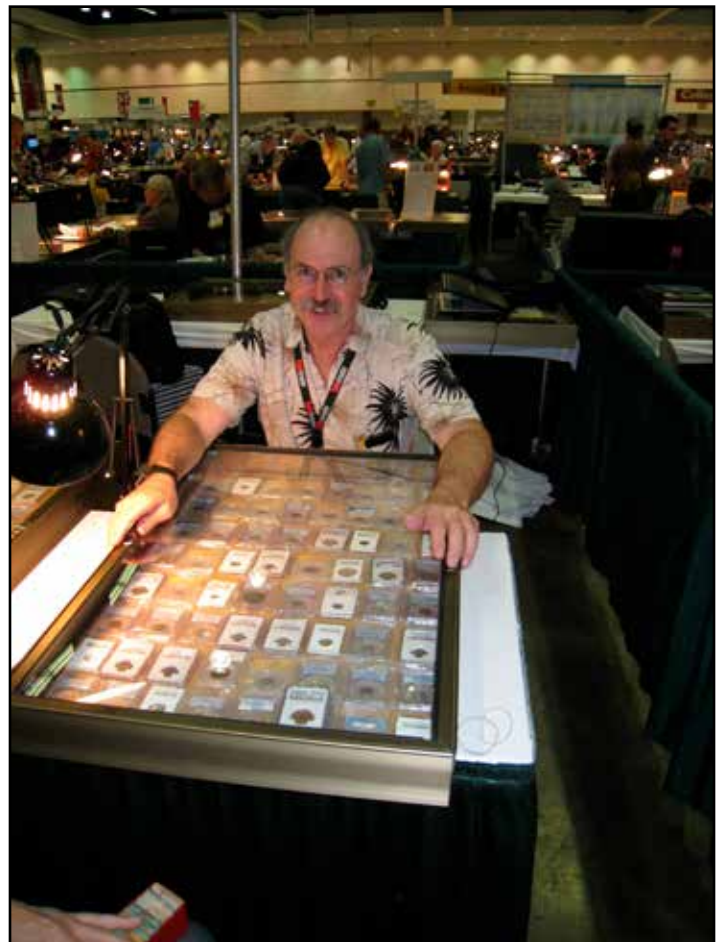
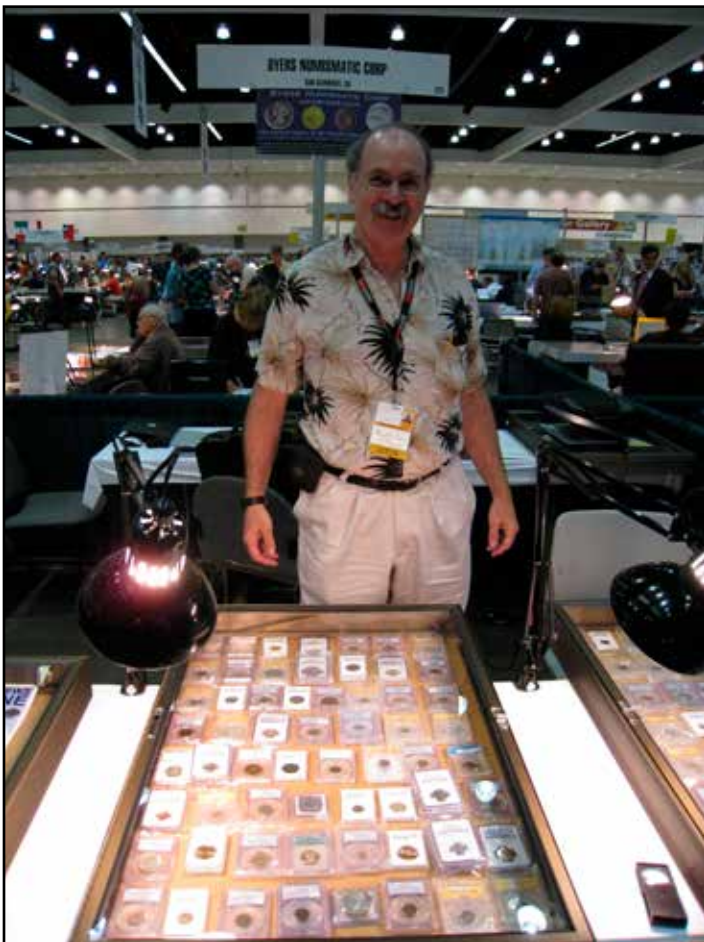
In Memoriam: Allan Levy

by Mike Byers (mikebyers.com)

Allan Levy was a specialist in Mint and Currency Errors for over 25 years. His website featured a diverse group of type errors, modern errors and major currency errors as well as regular U.S. and World coins. Allan Levy was a member of CONECA and the American Numismatic Association. He was well known at the major coin shows he attended. He was always friendly to customers and dealers and was happy to discuss the minting process with

collectors. He is survived by his wife, Kathi, who continues to collect coins and may attend future shows.

Allan was a major contributor to Mint Error News and put together comprehensive charts documenting auction sales for various mint error types. His hard work and dedication helped Mint Error News grow to be the largest website and magazine for mint errors. He will be greatly missed.



BYERS NUMISMATIC CORP

MIKEBYERS.COM



U.S. GOLD COINS • PATTERNS • RARITIES

For Sale: \$600,000.

1900 Indian Head Cent

Struck on Gold \$2.50 Planchet

PCGS MS 65



USA Coin Album: It's An Error

To Call A Variety An Error

By David W. Lange, NGC Research Director (ngccoin.com)

In this month's column, David addresses confusion about what constitutes an error versus a variety.

One of my roles at Numismatic Guaranty Corporation is to attribute varieties of United States coins. Something I've observed repeatedly is that many submitters don't seem to distinguish between die varieties and mint errors. Since my colleague at NGC, David Camire, attributes the latter, we are frequently swapping boxes of coins that were directed to the wrong party. I can't tell for certain whether the submitters intentionally mix the two categories or simply can't comprehend the difference. Just in case there remains some confusion about what constitutes an error versus a variety, I will address that very subject in this month's column.

The simplest distinction is that a mint error is a random occurrence that is not the result of some irregularity in the dies as created. It may be the result of a damaged or

improperly installed die, or it may be caused also by a flawed planchet or mis-feed in the coin press. In other words, the dies used begin their lives as normal in all respects and remain so unless some calamity befalls them. A variety, in contrast, results from some oddity in the dies as made, such as a repunched date or mintmark, a misspelled word, a doubled die, a simple slip of the graver or some other such irregularity that is inherent in the dies as made.

Another way to distinguish between categories is that a variety repeats itself on each and every coin made from the die pair, while a mint error may occur with one coin and then not be seen on subsequent strikes. The exception to this general rule is when the error coin reflects some lasting damage to the die that prevents a normal striking of the incoming planchets. One extremely popular example of a repeating error is known as a "brockage." This occurs when a struck coin adheres

to one die and then becomes the mate to the other die. Subsequent coins will show two obverses or two reverses, the affected side having a transposed image from the coin stuck in place as acting as a die. This image is rapidly obliterated due to repeated compression of the coin. Since it is much softer than die steel, it will quickly become flattened until it either falls away or is removed by the press operator. If the die is deemed to be still serviceable, subsequent coins struck from it will appear normal.

Most mint errors are not repeating and will look different from one coin to the next. An exception to this rule, however, concerns dies that have had an area of their face broken away. A die crack that extends from one point at the edge of a die to another point may cause the entire portion outboard of this crack to break away. The metal of the incoming planchet fills this void, leaving a raised blob on the face of the resulting coin that is popularly

USA Coin Album: It's An Error To Call A Variety An Error

called a "cud." Though this actually represents a particular die state and is thus technically a variety (as the effect is repeating), such coins typically are sought more by mint error specialists. Exceptions are found among collectors of early USA coins, who are attracted to progressive die states resulting in such complete die failures. By and large, however, cuds are branded as mint errors, and they are attributed as such by NGC.

One interesting crossover coin that attracts both variety and error collectors is found in Volume One of *The Cherrypickers' Guide to Rare Die Varieties*, by Bill Fivaz and J. T. Stanton. Their listing FS-01-1983-401 is a 1983 cent that qualifies as both a variety and mint error. Raised letters IBE of LIBERTY appear in the obverse field at an odd angle due to an unknown cause, appealing

to variety collectors. Whatever prompted this repeating feature evidently damaged the reverse die of this pair, as well, since a large cud formed partially obliterating the words ONE CENT. Thus, coins from these dies are widely sought by mint error collectors, too.

Until the 1960s, when numismatists first began to specialize in mint errors and truly study minting technology, all error coins and many variety coins were lumped together under the unflattering banner of "freaks." Many such coins were simply pieces that had been damaged outside of the mint, and both readers and editors of numismatic publications scratched their heads over the attribution of these dubious rarities. Some legitimate errors and varieties attained great notoriety, such as the "BIE" varieties that resulted when the die steel between letters BE of

LIBERTY on Lincoln cents chipped away. The filled area on subsequent coins appeared to be a letter I, and this type of variety was frequently seen on cents of the 1950s and early 1960s. So popular were BIE cents back then that books were dedicated to their cataloging, and a club was established for their collecting. Now considered common and of only minor interest to the better educated collectors of today, BIE cents are still submitted to NGC for attribution. As they add little or no value to the coin, they are not recognized by the company.

David W. Lange's column, "USA Coin Album," appears monthly in the *Numismatist*, the official publication of the American Numismatic Association.

uspatterns.com

The Society of U.S. Pattern Collectors is dedicated to the study of many of the rarest coins struck at the U.S. Mint: patterns, die trials and experimental pieces.

WORLD PAPER MONEY ERRORS

Editor's Note: Zyrus Press publishes a new book on World Paper Money Errors.



World Paper Money Errors Explored!

Odd shapes, upside down prints, intriguing cuts and folds, and missing design elements are only a few of the different printing errors examined in this expansive collection on foreign error notes. World Paper Money Errors is a visually compelling avenue into the fascinating and rarely explored area of numismatics that expands on the hobby of collecting paper currency.

Author Morland Fischer's comprehensive collection reflects the attraction and advantages of exploring foreign printing errors. An overview of collecting paper money errors in today's numismatic market offers insights on the great disparity between domestic and world notes. Market values are discussed, acknowledging what variables make an error note precious in the trade. Incorporating these concepts and more, Fischer expands the method of collecting currency errors by introducing a Foreign Error Note (FEN) scale to gauge price levels based on error type.

With over 200 examples of dramatic, colorful and intriguing foreign paper money errors, collectors and spectators alike are exposed to a new form of collecting currency. The numismatic community will benefit from this thorough guide that is unlike any other on the market.

AVAILABLE FROM ZYRUSPRESS.COM

**ZYRUS
PRESS**

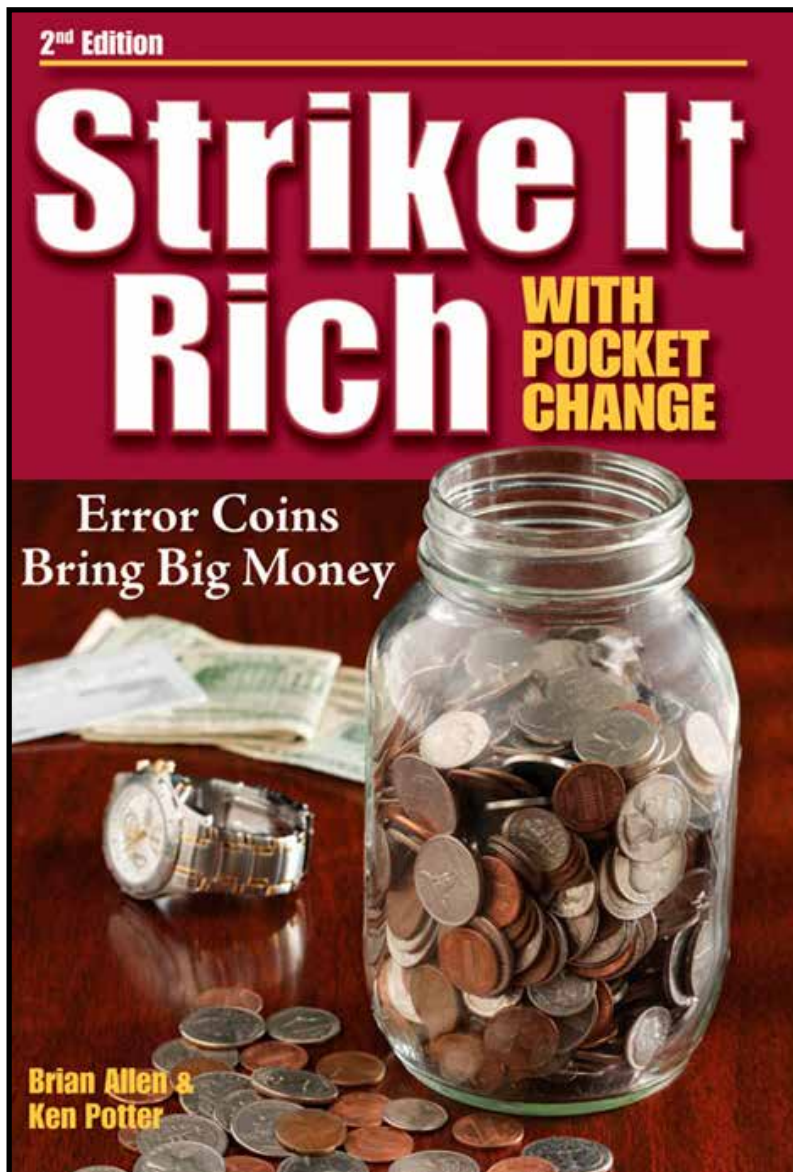
New From Krause Publications: Strike It Rich With Pocket Change *Error Coins Bring Big Money*

by Brian Allen & Ken Potter
NEW Second Edition

This is the long awaited second edition to this Numismatic Literary Guild Award Winning book! It covers important die varieties and errors known on United States coins from cents through dollars that can still be found in pocket change! It is the most in-depth work of its kind covering, doubled dies, repunched mintmarks, over mintmarks, abraded die varieties, mules, counter clashes, transitional errors, rotated reverses, edge lettering errors on Presidential dollars, die design changes, striking errors, planchet errors, etc. Expanded to include 50 more pages than the first edition, it spans 320 pages with over 800 photos show-

ing you where to look and what to look for on every single variety coin listed. It contains important information including updated values of the coins and important cross reference listing numbers to the most

popular listing services out there. It also contains important chapters on worthless forms of doubling often confused with valuable types of doubling, grading coins, tools of the trade, coin preservation, a treatment on minor varieties, a chapter on common myths associated with error-variety coins, how to buy and sell, finding States Quarter Errors and Varieties, terms and definitions, recommended reading, joining clubs and more!



Visit <http://koinpro.tripod.com/books.htm> for more information.

BYERS NUMISMATIC CORP

MIKEBYERS.COM



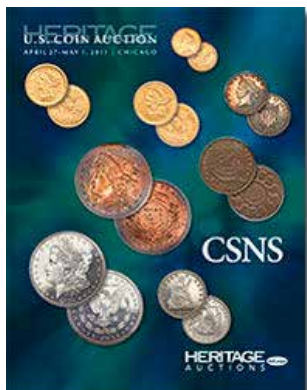
U.S. GOLD COINS • PATTERNS • RARITIES

SOLD

**1874 \$1 U.S. Gold Type 3
Mirror Brockage on Obverse
NGC MS 62 Unique**



Prices Realized In The April 2011 Rosemont CSNS Heritage Auction



Editor's Note: The following coins were in the 2011 April Rosemont CSNS Signature & Platinum Night US Coin Auction #1154 and the 2011 April Rosemont CSNS Signature Currency Auction #3513.

Peace Dollar -- Double Struck, Second Strike 80% Off Center -- MS62 NGC
\$9,775.00



1925-D \$2 1/2 Indian -- Double Struck, Rotated 180 Degrees in Collar -- MS62 NGC
\$57,500.00



PRICES REALIZED IN THE APRIL 2011 ROSEMONT CSNS HERITAGE AUCTION

1869 \$2 1/2 Quarter Eagle, Judd-770, Pollock-855, Low R.7, PR66 Deep Cameo PCGS. CAC
\$19,550.00



“1759” (1999) Martha Washington “Dollar”, -Experimental Edge- MS65 Prooflike NGC
\$4,312.50



“1759” (1999) Martha Washington “Dollar,” Judd-2185, Pollock-Unlisted, Low R.7, MS66 NGC
\$3,450.00



PRICES REALIZED IN THE APRIL 2011 ROSEMONT CSNS HERITAGE AUCTION

**"1759" (1999) Martha Washington "Dollar", -Experimental Edge- MS66 NGC
\$3,737.50**



**1965 Lincoln Cent -- Struck on a 1965 Dime -- MS67 NGC
\$1,035.00**



**1966 Lincoln Cent -- Struck on a 1966 Dime -- MS65 NGC
\$632.50**



PRICES REALIZED IN THE APRIL 2011 ROSEMONT CSNS HERITAGE AUCTION

1967 Lincoln Cent -- Struck on a 1967 Dime -- MS68 NGC
\$1,092.50



1968 Lincoln Cent -- Struck on a 1968 Dime -- MS64 NGC
\$632.50



2002 Lincoln Cent -- Struck on a Struck Dime -- MS67 NGC
\$862.50



PRICES REALIZED IN THE APRIL 2011 ROSEMONT CSNS HERITAGE AUCTION

2003 Lincoln Cent -- Double Denomination on a Dime -- MS66 PCGS

\$1,207.50



2005 Lincoln Cent -- Struck on a 2005-P Dime -- MS68 NGC

\$1,265.00



1964-D Washington Quarter -- Double-Struck on a Nickel Planchet -- AU58 NGC

\$460.00



PRICES REALIZED IN THE APRIL 2011 ROSEMONT CSNS HERITAGE AUCTION

1965 Washington Quarter -Struck on a Silver Quarter Planchet- XF45 PCGS
\$5,462.50



1976 Bicentennial Quarter -- Reverse Struck Through Dime Planchet -- MS63 PCGS
\$1,610.00



1951 50C Franklin Half Dollar -- Struck on a Quarter Blank -- MS63 Full Bell Lines NGC
\$2,012.50



PRICES REALIZED IN THE APRIL 2011 ROSEMONT CSNS HERITAGE AUCTION

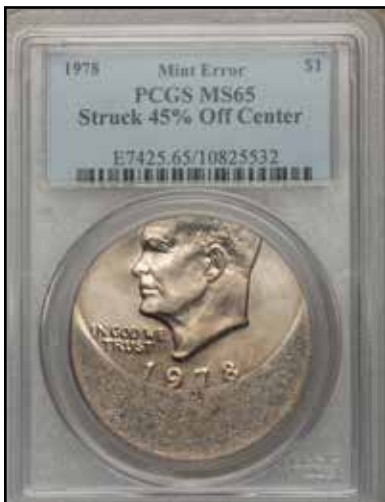
1956 50C Franklin Half Dollar -- Struck on a Quarter Planchet -- MS64 NGC
\$1,380.00



1964 50C Kennedy Half Dollar -- Reverse Die Cap, Uniface Obverse -- MS63 PCGS
\$862.50



1978 \$1 Eisenhower Dollar -- Struck 45% Off Center -- MS65 PCGS
\$2,875.00



PRICES REALIZED IN THE APRIL 2011 ROSEMONT CSNS HERITAGE AUCTION

1923 \$20 Double Eagle -Reverse Struck Thru- MS62 NGC
\$1,667.50



Fr. 1935-D \$2 1976 Federal Reserve Note. PCGS Very Choice New 64PPQ
\$9,775.00



Atlanta, GA - \$10/\$20 1882 Value Back Fr. 577 The Lowry NB Ch. # 5318 PCGS About New 50
\$35,000.00



PRICES REALIZED IN THE APRIL 2011 ROSEMONT CSNS HERITAGE AUCTION

Atlanta, GA - \$20/\$10 1882 Value Back Fr. 581 The Lowry NB Ch. # 5318 PCGS About New 50
\$42,500.00



Fr. 1960-J \$5/\$10 1934D Federal Reserve Note. PCGS Gem New 65PPQ
\$18,975.00



Fr. 1960-J \$5/\$10 1934D Federal Reserve Note. PCGS Gem New 65PPQ
\$18,975.00



CONECA

The Combined Organizations of Numismatic Error Collectors of America



CONECA is a national numismatic organization devoted to the education of error and variety coin collectors. CONECA focuses on many error and variety specialties, including doubled dies, Repunched mintmarks, multiple errors, clips, double strikes, off-metals and off-centers -- just to name a few. It publishes an educational magazine, The Errorscope, which is printed and mailed to members bimonthly. CONECA offers a lending library, examination, listing and attribution services; it holds annual meetings at major conventions (referred to as Errorama) around the country, and offers auction services to its members. Please visit conecaonline.org and enjoy!

CONECA Variety Attribution Services

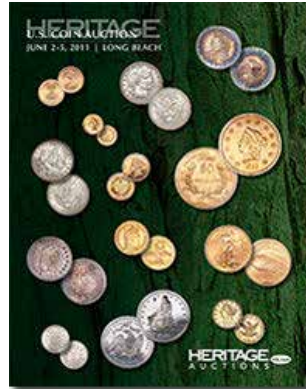
CONECA offers two attribution services. One service enables members and non-members to send their coins directly to an authorized CONECA attributer. The other service is offered through the numismatic grading firm of ICG and enables CONECA members and non-members to have their coins attributed by a CONECA attributer and then graded and slabbed by ICG.

CONECA Error Examination Services

CONECA offers two examination services. One service enables members and non-members to send coins to an authorized CONECA examiner who will return an opinion of each coin's error classification. The other service is offered through the numismatic grading firm of ICG and enables CONECA members and non-members to have their coins examined by a CONECA examiner and then graded and slabbed by ICG.

conecaonline.org

Mint Errors Featured In The Upcoming June 2011 Long Beach Heritage Auction



Editor's Note: The following coins are featured in the upcoming June 2011 Long Beach Signature US Coin Auction #1156.

1854 One Cent, Judd-158, Pollock-185, High R.6, PR65 NGC



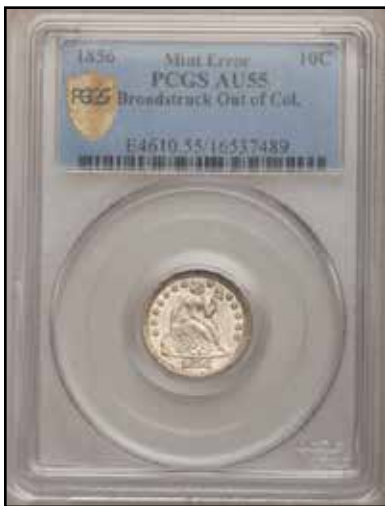
1961 Lincoln Cent -- Struck on a Silver Dime Planchet -- MS62 PCGS



Undated Two Cent Piece -- Obverse Struck Through Capped Die -- MS64 Brown NGC



1856 Large Date Seated Dime-- Broadstruck Out of Collar -- AU55 PCGS Secure



1921 Morgan Dollar -- Broadstruck -- AU58 NGC



2000 Lincoln Cent--Double Denomination Struck On 10C Planchet-- MS66 PCGS



CoinFacts.com

Your Online Reference For U.S. Coins



**“The Ultimate Coin Book” by CoinFacts.com, Inc.
Now Available on CD-Rom**



Our new CD-Rom is a mirror image of the CoinFacts website but with no download delays caused by slow Internet connections. In fact, no Internet connection is required at all, making the CoinFacts CD-Rom perfect for use in your home, office or even your portable computer at coin shows. Plop the CoinFacts CD-Rom in your PC and have immediate, lightning-fast access to the thousands of full color images and indispensable numismatic information. Please visit CoinFacts.com for more information and to purchase.

Visit www.HeritageCoin.com for your
ERROR COIN RESEARCH
FREE MEMBERSHIP!

These are only a sample of the thousands of error coins Heritage has handled. Consign your error coins today to the next Heritage Sale.

Look up these error coins in our Permanent Auction Archives for descriptions and full-color, enlargeable images:



Visit the HeritageCoin.com website today
 Easy to join
 Free membership
 Significant research tools
 Easy to bid
 Easy to buy
 Winner of the
 NLG's Best Commercial
 Website Award!

- A. 2003 ANA National Money Show, lot 6963
 1919 Quarter
 Struck 50% Off Center
 XF45 PCGS
REALIZED \$15,525

- B. 2002 September Long Beach Sale, lot 9648
 1999 SBA Dollar
 Multiple Strike, Reeded Edge
 MS65 PCGS
REALIZED \$6,900

- C. 2002 New York Sale, lot 7290
 1999 Cent
 Die Cap With Second Coin Bonded
 MS64 Red Uncertified
REALIZED \$920

- D. 2002 February Long Beach Sale, lot 7300
 Undated Struck Through
 Capped Die Indian Cent
 MS64 Brown PCGS
REALIZED \$1,265

- E. 2002 FUN Sale, lot 9040
 1963 Half Dollar
 Split Planchet
 AU58 Uncertified
REALIZED \$1,610

- F. 2001 ANA Sale, lot 8658
 1963 Half Dollar
 Double Struck, Indented by a Cent Planchet
 MS66 PCGS
REALIZED \$20,125

- G. 2001 ANA Sale, lot 8651
 1999-P Dime
 Bonded Strike, Struck More Than 10 Times
 MS64 Uncertified
REALIZED \$2,300

- H. 2001 ANA Sale, lot 8657
 1999 Mated Pair of Georgia Statehood Quarters
 Partial Collar, Indent and Stretch Strike, Indent
 MS64 Uncertified
REALIZED \$2,415

- I. 2001 February Long Beach Sale, lot 7497
 1912 Quarter Eagle
 Struck 5% Off Center
 MS64 NGC
REALIZED \$4,370



BO
 Steve Ivy
 Jim Halberin
 Greg Rohan
 P.N.G.

Heritage Plaza, 100 Highland Park Village, 2nd Floor • Dallas, Texas 75205-2788
 1-800-US COINS (800-872-6467) • 214-528-3500 • FAX: 214-443-8425
www.HeritageCoin.com • e-mail: Bids@HeritageCoin.com
www.CurrencyAuction.com • e-mail: Notes@CurrencyAuction.com

BYERS NUMISMATIC CORP

MIKEBYERS.COM



U.S. GOLD COINS • PATTERNS • RARITIES

Consign Your Coins to mikebyers.com

Terms and Conditions

We are offering this service for error collectors and dealers alike. In order to post your item on our website you must agree to the following terms and conditions.

1. All coins must be from the United States, certified by PCGS or NGC, have a minimum value of \$25,000 each and should be either pre-1840 gold coins, patterns or Early Type Mint Errors (Pre-1950).
2. Each item must meet our inventory criteria in terms of desirability and market value.
3. Byers Numismatic Corp charges a 10% Commission on each sale.
4. The minimum time for any listing is thirty days.
5. Seller agrees to a seven day return privilege from date of receipt.
6. Seller agrees to use an escrow service if requested by the buyer.
7. We reserve the right to deny or cancel any listing at any time.
8. All listing are subject to prior sale.

Scanning Specifications

1. Scan both the obverse and reverse of the entire holder.
2. Scan with a resolution of at least 300 dpi.
3. Save the picture in jpeg format (jpg).

Information Requirements

In addition to e-mailing a photo of your item, please include the following information:

1. Name, Address & Phone Number
2. E-Mail Address
3. Asking Price

After your item is listed, we will contact you by e-mail with any offers and questions. Once a price is agreed upon we will handle the entire sale for a 10% transaction fee, which includes all costs (eBay fees, grading fees, webmaster charges, postage and registration fees, insurance, paperwork, etc.).

If you have a collection for sale or would like to sell your duplicates and do not want to consign your coin(s), we can purchase your entire collection outright. Please contact us at mike@mikebyers.com.



ANACS is the Collector's Choice because we know what counts: knowledge, integrity, and service. How much we value coin collecting is evident in our work.

The ANACS team enthusiastically works to advance coin collecting by offering unequaled expertise and developing new services.

This makes ANACS the choice of hobbyists, professional numismatists, and dealers. We are the coin grading service to contact when you want to know all the details about your coin's authenticity and grading.

anacs.com



**America's Oldest
Grading Service™
Established 1972**

Mint Error News Price Guide

This price guide is brought to you by Mint Error News. It has been compiled by many of the top major mint error dealers.

This price guide is a guide. Prices fluctuate due to the date, grade, eye appeal and how dramatic the striking error is. Rarity is also a factor. The price is sometimes based on the rarity and grade of the type of coin as well as how rare the error is. The price can also vary depending on whether two collectors are bidding for the same rare major mint error. When purchasing a mint error, it is important to use multiple resources to determine value, as there are many mint errors that do not fit into one category.

Proof Errors



Proof coins are struck by technicians who hand feed the blanks into special presses. They are produced, examined, and packaged using extreme quality control. It is very unusual to find major proof errors. A few broadstrikes, off-centers, double strikes in collars and off-metals have been known to be found in sealed proof sets. Proof errors are aggressively sought after by many error collectors.

A very small group of Proof errors recently came from a collection that was auctioned by the State of California. The U.S. Secret Service inspected and released this collection to the State of California determining that it was legal to own. The State of California then auctioned the collection and it has been dispersed since the sale.

Denomination	Broadstrikes	Die Trials	Double/Triple Strikes	Off-Center Strikes	Partial Collar Errors
Proof Lincoln Cent	\$1,500 - \$2,500	\$1,000	\$4,000	\$1,500 - \$3,000	\$500
Proof Jefferson Nickel	\$2,500 - \$4,000	\$4,000	\$6,000	\$2,000 - \$5,000	\$1,000
Proof Clad Dime	\$3,000 - \$5,000	\$4,000	\$6,000	\$2,500 - \$5,000	\$1,250
Proof Clad Quarter	\$4,000 - \$5,000	\$5,000	\$10,000	\$7,500	\$1,500
Proof Clad Half	\$5,000 - \$7,000	\$4,000 - \$5,000	\$10,000	\$10,000	\$2,000
Proof Ike Dollar	\$15,000	-	\$25,000	-	\$4,000
Presidential Dollar	-	-	-	-	1 Known (Madison)

Mint Error News Price Guide

Broadstrikes



A broadstruck error occurs when a coin is struck without the collar to form the rim and edge that is part of the shape of the coin. Coins can be broadstruck on either type one or type two planchets. When a coin is broadstruck the blank being fed into the collar will spread and distort outward as it is being struck because the collar isn't in the correct position to retain it.

Denomination	(Small) XF/AU	(Small) Unc	(Large) XF/AU	(Large) Unc
Large Cent	\$150	\$300	\$400	\$1,500
Flying Eagle Cent (1857 – 1858)	\$1,000	\$2,500	\$1,500	\$7,500
Indian Cent	\$50	\$150	\$200	\$350
Lincoln Cent 1930 and Earlier	\$50	\$150	\$100	\$250
Lincoln Cent 1943 Steel	\$40	\$100	\$75	\$200
Proof Lincoln Cent	N/A	\$1,500	N/A	\$2,500
3 Cent Nickel	\$250	\$1,000	\$400	\$1,500
3 Cent Silver	\$1,000	\$3,500	\$1,500	\$5,000
Shield Nickel	\$400	\$1,250	\$1,000	\$2,500
Liberty Nickel	\$150	\$300	\$200	\$600
Buffalo Nickel	\$100	\$200	\$200	\$500
Jefferson Nickel War Time	\$100	\$200	\$200	\$500
Proof Jefferson Nickel	N/A	\$2,500	N/A	\$4,000
Seated Half Dime Legend	\$1,500	\$3,500	\$2,000	\$7,500
Seated Dime Legend	\$1,500	\$3,500	\$2,000	\$7,500
Barber Dime	\$150	\$250	\$200	\$400
Mercury Dime	\$40	\$150	\$150	\$250
Proof Clad Dime	N/A	\$3,000	N/A	\$5,000
Barber Quarter	\$600	\$1,250	\$1,000	\$2,500
Standing Liberty Quarter	\$2,000	\$4,000	\$3,000	\$6,000
Washington Quarter Silver	\$75	\$150	\$100	\$250
State Quarter	N/A	\$25	N/A	\$50
Proof Clad Quarter	N/A	\$4,000	N/A	\$5,000
Barber Half	\$2,500	\$3,500	\$3,000	\$5,000
Walking Liberty Half	\$3,000	\$5,000	\$4,000	\$7,000
Franklin Half	\$1,500	\$3,000	\$2,000	\$4,000
Kennedy Half Silver	\$150	\$250	\$200	\$300
Kennedy Half Clad	\$40	\$60	\$50	\$75
Proof Clad Half	N/A	\$5,000	N/A	\$7,000
Morgan Dollar	\$200	\$500	\$400	\$1,000
Peace Dollar	\$4,000	\$6,000	\$6,000	\$10,000
IKE Dollar	\$100	\$150	\$150	\$200
SBA Dollar	\$50	\$75	\$100	\$200
Sac Dollar	N/A	\$300	N/A	\$500
Presidential Dollar	N/A	\$1,500	N/A	\$2,500

Mint Error News Price Guide

Partial Collars



Partial collar strikes occur when there is a malfunction of the striking press. This causes the collar to be in an incorrect position. The lower die (usually the reverse die) is recessed in the collar. This allows the coin which is going to be struck to have a formed rim. After a coin is struck the lower die raises upwards, pushing the struck coin out of the collar and ejecting it. If a blank entering the collar is not properly seated, it will only have partial reeding as it is struck. The edge of this coin will have a partial reeding and a partial blank surface area. Recently, the Mint has installed new machinery where either die can be installed in either position.

Denomination	XF/AU	Unc
Large Cent	\$100	\$200
Flying Eagle Cent (1857 – 1858)	\$500	\$1,500
Indian Cent	\$35	\$100
Lincoln Cent 1930 and Earlier	\$30	\$100
Lincoln Cent 1943 Steel	\$25	\$50
Proof Lincoln Cent	N/A	\$750
3 Cent Nickel	\$150	\$500
3 Cent Silver	\$250	\$750
Shield Nickel	\$200	\$600
Liberty Nickel	\$50	\$150
Buffalo Nickel	\$50	\$75
Jefferson Nickel War Time	\$40	\$60
Proof Jefferson Nickel	N/A	\$1,000
Seated Half Dime Legend	\$750	\$1,500
Seated Dime Legend	\$500	\$1,250
Barber Dime	\$75	\$150
Mercury Dime	\$30	\$100
Proof Clad Dime	N/A	\$1,250
Barber Quarter	\$300	\$750
Standing Liberty Quarter	\$1,250	\$2,000
Washington Quarter Silver	\$40	\$75
State Quarter	N/A	\$15
Proof Clad Quarter	N/A	\$1,500
Barber Half	\$1,000	\$1,500
Walking Liberty Half	\$1,500	\$3,500
Franklin Half	\$500	\$1,000
Kennedy Half Silver	\$50	\$100
Kennedy Half Clad	\$20	\$30
Proof Clad Half	N/A	\$2,000
Morgan Dollar	\$150	\$300
Peace Dollar	\$1,000	\$2,500
IKE Dollar	\$50	\$100
SBA Dollar	\$20	\$30
Sac Dollar	N/A	\$100
Presidential Dollar	N/A	\$250
\$1 Gold Type 1	\$2,500	\$5,000
\$1 Gold Type 2	\$5,000	\$10,000
\$1 Gold Type 3	\$2,000	\$3,000
\$2½ Liberty	\$2,000	\$3,000
\$2½ Indian	\$2,000	\$3,000
\$3	\$5,000	\$10,000
\$5 Liberty	\$3,000	\$5,000
\$5 Indian	\$4,000	\$6,000
\$10 Liberty	\$4,000	\$7,500
\$10 Indian	\$5,000	\$7,500
\$20 Liberty Type 3	\$7,500	\$10,000

Mint Error News Price Guide

Uniface Strikes



Uniface coins occur when there have been two blank planchets in the press at the same time. The other blank will obstruct the die on either the obverse or reverse side, which will prevent it from having that design on the coin. There are many different variations involving uniface errors. In addition to having a 100% blank obverse or reverse, a coin can be struck off-center, with a blank planchet in the collar which will obstruct one side of the off-center. There are also mated pairs which have a combination of multiple errors which can include a side which is uniface. Finally, there are uniface strikes due to a die cap which adhered to the die, forming itself in the shape of a die and striking blank planchets.

Denomination	Uniface Obverse XF	Uniface Obverse Unc	Uniface Reverse XF	Uniface Reverse Unc
Large Cent	\$1,500	\$4,000	\$1,250	\$2,000
Indian Cent	\$1,250	\$3,000	\$1,000	\$2,500
Lincoln Cent 1943 Steel	\$250	\$500	\$200	\$400
Lincoln Cent Wheat Ears	\$50	\$100	\$40	\$75
3 Cent Nickel	\$1,500	\$3,000	\$1,250	\$2,500
Shield Nickel	\$1,750	\$4,000	\$1,500	\$3,000
Liberty Nickel	\$2,000	\$3,500	\$1,500	\$3,000
Buffalo Nickel	\$2,250	\$3,000	\$2,000	\$2,500
Jefferson Nickel War Time	\$300	\$750	\$250	\$500
Jefferson Nickel	\$20	\$40	\$20	\$40
Barber Dime	\$2,000	\$3,000	\$1,500	\$2,500
Mercury Dime	\$1,500	\$2,500	\$1,250	\$2,250
Roosevelt Dime Silver	\$100	\$150	\$100	\$150
Roosevelt Dime Clad	\$40	\$75	\$35	\$60
Washington Quarter Silver	\$400	\$750	\$350	\$500
Washington Quarter Clad	\$100	\$125	\$75	\$100
State Quarter	N/A	\$300	N/A	\$500
Kennedy Half Clad	\$750	\$1,000	\$500	\$750
IKE Dollar	N/A	\$4,000	N/A	\$4,000
SBA Dollar	N/A	\$1,000	N/A	\$750
Sac Dollar	N/A	\$1,500	N/A	\$1,000

Mint Error News Price Guide

Bonded Coins



Bonded coins occur when the feeder system, which supplies blank planchets to the coin press, malfunctions and jams. When this occurs, a struck coin is not properly ejected and another planchet is fed into the collar and is struck. This struck coin will land on top of the previously unejected strike. These coins will then crush and bond together. This may occur many times as more coins bond.

Denomination	2 Planchets	3-4 Planchets
Lincoln Cent Wheat Ears	\$5,000	\$15,000
Lincoln Cent Memorial	\$1,500	\$3,500
Jefferson Nickel	\$2,000	\$5,000
Roosevelt Dime Silver	\$4,000	\$12,500
Roosevelt Dime Clad	\$2,500	\$5,000
Washington Quarter Silver	\$7,500	–
Washington Quarter Clad	\$2,000	–
State Quarter	\$5,000	–
Kennedy Half Silver	\$12,500	–
Kennedy Half Clad	\$10,000	–
IKE Dollar	–	–
SBA Dollar	–	–
Sac Dollar	–	–

Mint Error News Price Guide

Struck Fragments



The blanking press takes the coils of metal strips and punches blanks out of it, ejecting the webbing at the other end. The webbing is cut into small scrap pieces to be melted and recycled. Occasionally a scrap piece will be mixed with the blank planchets and struck by the dies. Struck fragments are rare in the larger denominations. These can be uniface or die struck both sides and are very rare on type coins.

Denomination	Uniface	Die Struck Both Sides
Indian Cent	\$1,000	\$2,000
Lincoln Cent Wheat Ears	\$750	\$2,000
Lincoln Cent Memorial	\$75	\$125
3 Cent Nickel	\$3,000	\$3,500
Jefferson Nickel	\$100	\$200
Roosevelt Dime Silver	\$500	\$1,000
Roosevelt Dime Clad	\$150	\$250
Washington Quarter Silver	\$1,000	\$1,500
Washington Quarter Clad	\$200	\$300
State Quarter	\$750	\$1,000
Kennedy Half Silver	\$1,500	\$2,500
Kennedy Half Clad	\$750	\$1,250
IKE Dollar	\$3,000	\$5,000
SBA Dollar	\$2,000	\$3,000
Sac Dollar	—	—

Mint Error News Price Guide

Mated Pairs



Mated pairs involve two individual coins with different errors that were struck together at the same time. Mated pair error combinations can be found in most error types and come in many shapes and sizes. Mated pairs can be overlapped when one of the coins is struck off-center on top of another coin. Another type involves a brockage where a struck coin was perfectly centered on a blank and restruck. Some mated pairs involve a die cap where the cap and brockage coin are discovered together, but this is a scarce find.

The rarest mated pair type involves two die caps (obverse and reverse) where both dies were capped at the same time and both die caps are mated. This last type is extremely rare and there are only a few known examples of mated pairs involving an obverse die cap and reverse die cap. There are several of these mated pairs known on Kennedy Halves including two dated 1976, which is the Bicentennial year. One of the most spectacular mated pairs involve two Barber Dimes, an obverse die cap mated to a reverse die cap and are unique.

Mated pairs can also involve an off-metal where a smaller blank planchet or smaller struck coin was struck on top of a larger coin. This type is extremely rare. The most spectacular pair known is a double struck Franklin Half which was mated to a Lincoln Cent. The Lincoln Cent blank was on top of the obverse of the struck Franklin Half. This pair was then struck together. It is unique.

Denomination	Overlapping	Full Brockage	Die Cap	2 Die Caps
Lincoln Cent Wheat Ears	\$3,500	\$4,500	\$7,500	–
Lincoln Cent Memorial	\$500	\$750	\$750	\$1,250
Liberty Nickel	–	\$20,000	–	–
Jefferson Nickel (pre War Time)	–	–	–	\$15,000
Jefferson Nickel	\$1,000	\$1,250	\$1,500	\$2,500
Barber Dime	–	–	–	\$50,000
Roosevelt Dime Silver	\$3,500	\$4,000	\$4,000	–
Roosevelt Dime Clad	\$1,000	\$1,250	\$2,500	\$3,000
Washington Quarter Silver	\$4,000	–	–	–
Washington Quarter Clad	\$1,500	\$2,500	\$5,000	\$7,500
State Quarter	\$3,000	\$5,000	\$10,000	–
Kennedy Half Silver	\$7,500	\$7,500	\$7,500	\$12,500
Kennedy Half Clad	\$5,000	\$6,000	\$6,000	\$8,500
Kennedy Half Bicentennial	\$6,000	\$7,500	\$7,500	\$10,000
IKE Dollar	\$20,000	–	–	–
SBA Dollar	\$7,500	\$10,000	–	–
Sac Dollar	–	–	–	–

Mint Error News Price Guide

Transitional Errors



A transitional error occurs when a coin is struck on a planchet from a previous year with different metal composition. The most famous transitional is a 1943 copper cent struck on a 1942 copper blank. 1943 cents were struck in steel because of the copper shortage during World War II. Other famous transitionals include 1965 coinage struck in silver instead of clad.

There are also transitionals struck on blanks for the next year. An example is 1964 coinage in clad instead of silver. Most recently, transitionals were discovered involving the SBA and Sacagawea Dollars of 1999 and 2000. There are eight known 1999 SBA Dollars struck on the brass planchet for the 2000 Sacagawea Dollar, and four known 2000 Sacagawea Dollars struck on a clad planchet for the 1999 SBA Dollar.

Denomination	Off-Metal Planchet	Circulated	AU	Unc	Choice Unc – Gem
Lincoln Cent 1943 Transitional	Copper Cent Planchet	\$75,000	\$100,000	\$200,000	\$250,000
Lincoln Cent 1944 Transitional	Steel Cent Planchet	\$30,000	\$50,000	\$100,000	\$150,000
Lincoln Cent 1964 Transitional	Clad Dime Planchet	\$2,500	\$4,000	\$5,000	\$6,500
Lincoln Cent 1965 Transitional	Silver Dime Planchet	\$2,750	\$4,500	\$6,000	\$7,500
Roosevelt Dime 1964 Transitional	Clad Dime Planchet	\$5,000	\$6,500	\$7,500	\$8,500
Roosevelt Dime 1965 Transitional	Silver Dime Planchet	\$5,000	\$6,500	\$7,500	\$8,500
Washington Quarter 1964 Transitional	Clad Quarter Planchet	\$5,000	\$6,500	\$7,500	\$8,500
Washington Quarter 1965 Transitional	Silver Quarter Planchet	\$5,000	\$6,500	\$7,500	\$8,500
Kennedy Half 1964 Transitional	Clad Half Planchet	\$5,000	\$6,000	\$7,000	\$9,000
Kennedy Half 1965 Transitional	Silver Half Planchet	\$5,000	\$6,500	\$7,500	\$10,000
Kennedy Half 1964 Transitional	Clad Quarter Planchet	\$5,000	\$6,000	\$7,500	\$8,500
Kennedy Half 1965 Transitional	Silver Quarter Planchet	\$6,000	\$7,500	\$8,000	\$9,000
Ike Dollar Transitional	40% Silver Planchet	\$2,750	\$3,000	\$3,500	\$4,000
SBA Dollar Transitional	Sacagawea Planchet	N/A	N/A	\$12,500	\$15,000
Sacagawea Dollar Transitional	SBA Planchet	N/A	N/A	\$12,500	\$15,000

Mint Error News Price Guide

U.S. Gold Errors



Major mint errors on U.S. Gold coins are the most prized category of all mint errors. Gold errors are very rare and a few have traded in the \$75,000 to \$100,000 range. Even a broadstruck U.S. Gold coin can easily sell for \$15,000 to \$30,000 compared to a broadstruck Cent, Nickel, Dime or Quarter which all sell for well under \$10. Many serious collectors of Gold Errors have to wait patiently for months and sometimes even years to acquire that one special piece for their collection.

The prices listed here are for common dates in AU-Unc. Better dates and errors that are in gem condition are worth considerably more.

Denomination	Partial Collar	Broadstruck	Clipped Planchet	3% - 5% Off-Center	10% - 15% Off-Center
\$1 Gold Type 1	\$2,500	\$7,500	\$2,000	\$10,000	\$25,000
\$1 Gold Type 2	\$5,000	\$10,000	\$10,000	\$20,000	\$35,000
\$1 Gold Type 3	\$2,000	\$5,000	\$1,500	\$7,500	\$15,000
\$2½ Liberty	\$2,000	\$7,500	\$2,500	\$10,000	\$20,000
\$2½ Indian	\$2,000	\$7,500	\$2,500	\$7,500	\$17,500
\$3 Indian	\$5,000	\$15,000	\$5,000	\$15,000	\$35,000
\$5 Liberty	\$3,000	\$8,500	\$3,000	\$12,500	\$30,000
\$5 Indian	\$4,000	\$10,000	\$3,000	\$30,000	\$50,000
\$10 Liberty	\$4,000	\$20,000	\$3,000	\$25,000	\$50,000
\$10 Indian	\$5,000	\$20,000	\$5,000	\$40,000	\$60,000
\$20 Liberty	\$7,500	\$40,000	\$7,500	\$100,000	\$250,000
\$20 St. Gaudens	—	—	\$5,000	—	—
\$5 American Eagle	\$1,000	\$2,000	\$750	\$2,500	\$3,500
\$10 American Eagle	\$1,250	\$2,500	\$1,000	\$3,000	\$3,500
\$25 American Eagle	\$1,500	\$3,000	\$1,500	\$3,500	\$5,000
\$50 American Eagle	\$2,000	\$5,000	\$2,000	\$5,000	\$10,000

Mint Error News Price Guide

Indents



An indent error occurs when two blanks are fed inadvertently into the same collar, with one blank partly overlaying on top of the other. When the hammer die strikes this combination, the upper blank will be forced into the lower blank, creating a depression which is shaped similar to the upper blank. A scarce type of indent occurs when a blank intended for one denomination lands on top of a blank from a different denomination.

Denomination	10% - 25% XF	30% - 50% XF	10% - 25% Unc	30% - 50% Unc
Large Cent	\$300	\$600	\$750	\$2,000
Indian Cent	\$250	\$500	\$400	\$750
Lincoln Cent 1943 Steel	\$100	\$300	\$175	\$500
Lincoln Cent Wheat Ears	\$30	\$75	\$75	\$125
3 Cent Nickel	\$500	\$1,250	\$1,500	\$3,000
Shield Nickel	\$500	\$1,500	\$2,000	\$3,000
Liberty Nickel	\$400	\$1,000	\$750	\$1,500
Buffalo Nickel	\$300	\$1,000	\$600	\$2,000
Jefferson Nickel War Time	\$200	\$400	\$400	\$750
Jefferson Nickel	\$10	\$25	\$15	\$30
Barber Dime	\$1,000	\$2,000	\$1,500	\$3,000
Mercury Dime	\$300	\$750	\$500	\$1,500
Roosevelt Dime Silver	\$30	\$60	\$50	\$100
Roosevelt Dime Clad	\$10	\$20	\$15	\$30
Washington Quarter Silver	\$100	\$200	\$150	\$300
Washington Quarter Clad	\$25	\$50	\$35	\$100
State Quarter	N/A	N/A	\$200	\$350
Kennedy Half Clad	\$150	\$300	\$200	\$400
IKE Dollar	\$350	\$1,000	\$500	\$1,500
SBA Dollar	N/A	N/A	\$250	\$500
Sac Dollar	N/A	N/A	\$400	\$750

Mint Error News Price Guide

Die Caps



Die caps are caused when a struck coin sticks to the upper hammer die. Once the coin is struck to the die face, the reverse of the struck coin becomes the new die face. When the next blank is fed into the collar and the strike occurs, the reverse design of the adhered struck coin impresses itself into the new blank. This struck coin is a brockage strike. The coin that adhered to the upper die is known as a die cap. This process repeats itself as more coins are struck by the cap. The greater the number of strikes, the higher the cap metal will be pushed around the upper die shaft. Eventually, the cap brakes away from the die in the shape of a thimble.

Denomination	Obverse Cap XF	Obverse Cap Unc	Reverse Cap XF	Reverse Cap Unc
Large Cent	\$30,000	\$75,000	–	–
Indian Cent 1859	\$20,000	\$60,000	–	–
Indian Cent 1860-1864	\$15,000	\$50,000	–	–
Indian Cent 1864-1909	\$15,000	\$50,000	–	–
Lincoln Cent 1943 Steel	–	–	–	–
Lincoln Cent Wheat Ears	\$1,000	\$2,500	\$500	\$1,000
Lincoln Cent Memorial	\$150	\$200	\$50	\$100
2 Cent Piece	\$20,000	\$50,000	\$15,000	\$30,000
3 Cent Nickel	–	–	–	–
Shield Nickel	–	–	–	–
Liberty Nickel	\$12,500	\$25,000	–	–
Buffalo Nickel (1 Known)	–	\$30,000	–	–
Jefferson Nickel War Time	\$10,000	–	–	–
Jefferson Nickel	\$200	\$350	\$150	\$250
Barber Dime	\$25,000	\$30,000	\$17,500	\$20,000
Mercury Dime (2 Known)	\$5,000	\$7,500	–	–
Roosevelt Dime Silver	\$750	\$1,250	\$500	\$750
Roosevelt Dime Clad	\$200	\$400	\$200	\$250
Barber Quarter	\$30,000	\$75,000	–	–
Washington Quarter Silver	\$1,500	\$4,000	\$1,500	\$2,000
Washington Quarter Clad	\$350	\$750	\$250	\$350
State Quarter	N/A	\$1,000	N/A	\$600
Kennedy Half Silver	\$3,000	\$5,000	\$2,000	\$3,000
Kennedy Half Clad	\$2,000	\$3,500	\$1,500	\$2,000
Kennedy Half Bicentennial	\$2,500	\$4,000	\$1,750	\$2,500
IKE Dollar	–	\$30,000	–	–
SBA Dollar	N/A	\$20,000	N/A	\$15,000
Sac Dollar	N/A	\$20,000	N/A	\$15,000

Mint Error News Price Guide

Die Adjustment Strikes



Die adjustment strikes are also known as die trials. This error occurs when a coin is struck from the press with very little pressure. When the press is being set up and adjusted, extremely weak strikes occur as the strike pressure reaches its optimum level. These die trials are destroyed after being struck and are rarely found in circulation.

Denomination	XF/AU	Unc
Indian Cent	\$1,000	\$2,000
Lincoln Cent Wheat Ear	\$200	\$300
Lincoln Cent 1943 Steel	\$750	\$1,500
Lincoln Cent Memorial	\$50	\$75
2 Cent	\$5,000	—
Liberty Nickel	\$3,000	\$5,000
Buffalo Nickel	\$4,000	\$7,500
Jefferson Nickel War Time	\$1,250	\$2,000
Jefferson Nickel	\$75	\$100
Proof Jefferson Nickel	N/A	\$4,000
Barber Dime	\$2,500	\$3,500
Mercury Dime	\$1,000	\$1,500
Roosevelt Dime Silver	\$350	\$500
Roosevelt Dime Clad	\$100	\$125
Seated Quarter	\$5,000	\$7,500
Standing Liberty Quarter	\$15,000	\$20,000
Washington Quarter Silver	\$500	\$750
Washington Quarter Clad (Pre-State)	\$125	\$150
State Quarter	N/A	\$200
Walking Liberty Half	\$2,500	\$5,000
Kennedy Half Silver	\$500	\$750
Kennedy Half Clad	\$200	\$250
Proof Kennedy Half 40% Silver	N/A	\$5,000
Proof Kennedy Half Clad	N/A	\$4,000
Morgan Dollar	\$5,000	\$7,500
Peace Dollar	\$10,000	\$15,000
IKE Dollar	\$300	\$400
IKE Dollar Bicentennial	\$350	\$500
SBA Dollar	N/A	\$500
Sac Dollar	N/A	\$1,000

Mint Error News Price Guide

Double Denominations



One of the most expensive, popular, and desired types of errors are the double denominations. This error happens when a coin is struck on a previously struck coin of a smaller denomination. Examples are a cent on a struck dime, and a nickel on a struck cent. The most dramatic are those with considerable design visible from the original strike. There are a few known double denominations with different dates.

Denomination	Struck On	Circulated	AU	Unc
Lincoln Cent Wheat Ears	Mercury Dime	\$6,000	\$12,500	\$20,000
Lincoln Cent Wheat Ears	Roosevelt Dime	\$4,000	\$5,000	\$6,000
Lincoln Cent Wheat Ears	Foreign Coin	\$2,000	\$2,500	–
Lincoln Cent Memorial	Roosevelt Dime Silver	\$3,000	\$4,500	\$6,000
Lincoln Cent Memorial	Roosevelt Dime Clad	N/A	N/A	\$750
Lincoln Cent Memorial	Foreign Coin	N/A	\$600	\$750
Jefferson Nickel	Lincoln Cent Wheat Ears	\$1,500	\$2,000	\$2,500
Jefferson Nickel	Lincoln Cent Memorial	N/A	\$750	\$1,000
Jefferson Nickel	Foreign Coin	\$1,000	\$1,250	\$1,500
Jefferson Nickel	Roosevelt Dime	\$1,000	\$1,250	\$1,500
Roosevelt Dime Silver	Foreign Coin	\$4,000	\$5,000	\$7,500
Roosevelt Dime Clad	Foreign Coin	\$3,000	\$4,000	\$5,000
Washington Quarter Silver	Lincoln Cent Wheat Ears	\$3,000	\$4,000	\$6,000
Washington Quarter Silver	Lincoln Cent Memorial	\$2,500	\$3,000	\$3,500
Washington Quarter Silver	Foreign Coin	\$2,500	\$3,000	\$3,500
Washington Quarter Silver	Jefferson Nickel	\$3,000	\$4,000	\$6,000
Washington Quarter Silver	Roosevelt Dime Silver	\$2,500	\$3,000	\$3,500
Washington Quarter Clad	Lincoln Cent Memorial	\$2,500	\$3,000	\$3,500
Washington Quarter Clad	Foreign Coin	\$2,000	\$2,500	\$3,000
Washington Quarter Clad	Jefferson Nickel	\$2,500	\$3,000	\$3,500
Washington Quarter Clad	Roosevelt Dime Clad	\$2,000	\$2,500	\$3,000
State Quarter	Jefferson Nickel	N/A	\$7,500	\$10,000
State Quarter (Extremely Rare)	Any Other Denomination	N/A	\$10,000	\$12,500
Franklin Half	Lincoln Cent Wheat Ears	\$7,500	\$12,500	\$20,000
Kennedy Half (Extremely Rare)	Any Denomination	\$7,500	\$10,000	\$12,500
IKE Dollar (Extremely Rare)	Any Denomination	–	–	–
Sac Dollar	Maryland State Quarter	N/A	\$3,000	\$4,000

Mint Error News Price Guide

Brockages



A brockage error can only occur when there are two coins involved. One of the coins involved will always be a struck coin which has not ejected properly. That struck coin will find its way back between the dies and will be struck next to a blank planchet which was fed into the collar. The image of that first struck coin will be impressed into that side of the blank planchet. The result will be a second coin which has images of the first coin impressed into it. Those images will be pressed into the coin and the image will be in reverse. This incuse sunken image is known as a brockage.

Denomination	50% Brockage XF	100% Brockage XF	50% Brockage Unc	100% Brockage Unc
Large Cent	\$600	\$1,000	\$3,000	\$10,000
Indian Cent	\$500	\$1,250	\$1,500	\$4,000
Lincoln Cent 1943 Steel	\$350	\$500	\$650	\$1,000
Lincoln Cent Wheat Ears	\$125	\$200	\$200	\$350
3 Cent Nickel	\$1,250	\$2,000	\$3,500	\$5,000
3 Cent Silver	\$2,000	\$3,000	\$3,000	\$6,000
Shield Nickel	\$1,500	\$2,500	\$3,500	\$5,000
Liberty Nickel	\$1,250	\$2,250	\$2,000	\$4,000
Buffalo Nickel	\$2,000	\$2,500	\$2,500	\$7,500
Jefferson Nickel War Time	\$250	\$750	\$750	\$1,500
Jefferson Nickel	\$50	\$75	\$50	\$150
Barber Dime	\$2,500	\$3,500	\$5,000	\$12,500
Mercury Dime	\$1,000	\$3,000	\$1,500	\$4,000
Roosevelt Dime Silver	\$100	\$200	\$150	\$250
Roosevelt Dime Clad	\$50	\$100	\$75	\$150
Washington Quarter Silver	\$200	\$500	\$500	\$1,000
Washington Quarter Clad	\$75	\$150	\$150	\$250
State Quarter	N/A	N/A	\$750	\$1,500
Kennedy Half Clad	N/A	N/A	\$650	\$1,500
IKE Dollar	\$1,500	\$2,500	\$3,000	\$7,500
SBA Dollar	N/A	N/A	\$500	\$1,500
Sac Dollar	N/A	N/A	\$1,500	\$4,000

Mint Error News Price Guide

Double & Multiple Strikes



When a blank planchet is struck by the dies, the normal procedure is for the feeders to eject the struck coin out of the collar and into a chute. If there is a malfunction and the struck coin isn't ejected, it may receive a second or third strike by the dies. A multiple struck coin can happen in many ways and have many combinations of errors.

(Since each double and multiple strike can vary from being 10% off-center to 90% off-center, the prices listed below can be substantially more based on the percent off-center and dramatic overall look.)

Denomination	XF/AU	Unc
Large Cent	\$1,000	\$7,500
Indian Cent	\$600	\$1,000
Lincoln Cent 1930 and Earlier	\$850	\$1,500
Lincoln Cent 1943 Steel	\$400	\$1,500
Proof Lincoln Cent	N/A	\$4,000
3 Cent Nickel	\$2,000	\$3,500
Liberty Nickel	\$4,000	\$10,000
Buffalo Nickel	\$5,000	\$10,000
Jefferson Nickel War Time	\$750	\$2,000
Proof Jefferson Nickel	N/A	\$6,000
Barber Dime	\$4,000	\$10,000
Mercury Dime	\$3,500	\$8,500
Proof Clad Dime	N/A	\$6,000
Standing Liberty Quarter	\$15,000	\$50,000
Washington Quarter Silver	\$200	\$350
State Quarter	N/A	\$350 – \$750
Proof Clad Quarter	N/A	\$7,500
Walking Liberty Half	\$10,000	\$25,000
Franklin Half	\$5,000	\$10,000
Kennedy Half Silver	\$1,500	\$2,500
Kennedy Half Clad	N/A	\$750
Proof Kennedy Half Clad	N/A	\$7,500
Morgan Dollar	\$12,500	\$25,000
Peace Dollar	\$15,000	\$50,000
IKE Dollar	\$2,000	\$3,000
SBA Dollar	N/A	\$1,000 – \$2,500
Sac Dollar	N/A	\$1,500 – \$3,000

Mint Error News Price Guide

Off-Center Strikes



Off-center coins are one of the most common and best known types of errors. This happens when a blank which is supposed to be fed into the press, lands in the collar improperly. When this occurs only part of the blank is between the upper and lower dies. When the dies strike the blank, only that part will be struck with a design.

Denomination	10% - 15% XF/AU	25% - 60% XF/AU	10% - 15% Unc	25% - 60% Unc
Large Cent	\$400	\$2,500	\$1,000	\$10,000
Flying Eagle Cent (1857 – 1858)	\$2,500	\$10,000	\$5,000	\$20,000
Indian Cent	\$100	\$400	\$200	\$600
Lincoln Cent 1930 and Earlier	\$75	\$300	\$150	\$750
Lincoln Cent 1943 Steel	\$40	\$250	\$100	\$500
Proof Lincoln Cent	N/A	N/A	\$1,500	\$3,000
3 Cent Nickel	\$300	\$1,500	\$600	\$3,500
3 Cent Silver	\$1,000	\$5,000	\$2,000	\$7,500
Shield Nickel	\$750	\$2,500	\$1,000	\$7,500
Liberty Nickel	\$250	\$1,000	\$500	\$2,500
Buffalo Nickel	\$250	\$750	\$400	\$1,500
Jefferson Nickel War Time	\$100	\$500	\$200	\$1,000
Proof Jefferson Nickel	N/A	N/A	\$2,000	\$5,000
Seated Half Dime Legend	\$3,000	\$7,500	\$5,000	\$15,000
Seated Dime Legend	\$2,000	\$7,000	\$3,500	\$10,000
Barber Dime	\$300	\$1,500	\$500	\$2,500
Mercury Dime	\$100	\$750	\$150	\$1,250
Proof Clad Dime	N/A	N/A	\$2,500	\$5,000
Barber Quarter	\$1,500	\$5,000	\$2,500	\$10,000
Standing Liberty Quarter	\$5,000	\$20,000	\$20,000	\$40,000
Washington Quarter Silver	\$50	\$100	\$75	\$150
State Quarter	N/A	N/A	\$75	\$300
Proof Clad Quarter	N/A	N/A	\$3,000	\$7,500
Barber Half	\$4,000	\$10,000	\$6,000	\$20,000
Walking Liberty Half	\$4,000	\$12,500	\$7,500	\$20,000
Franklin Half	\$2,500	\$4,000	\$3,500	\$7,500
Kennedy Half Silver	\$100	\$500	\$250	\$1,000
Kennedy Half Clad	\$60	\$250	\$100	\$400
Proof Clad Half	N/A	N/A	\$4,000	\$7,500
Morgan Dollar	\$3,000	\$15,000	\$10,000	\$50,000
Peace Dollar	\$20,000	\$75,000	\$75,000	\$125,000
IKE Dollar	\$125	\$1,250	\$150	\$2,000
SBA Dollar	N/A	N/A	\$100	\$500
Sac Dollar	N/A	N/A	\$1,000	\$3,500
Presidential Dollar	Unknown	Unknown	Unknown	Unknown

Mint Error News Price Guide

Off-Metals



Off-metal and wrong planchet errors occur when a correctly made blank from one denomination is accidentally fed into a press for another denomination. Examples are a nickel struck on a cent planchet and a cent struck on a dime planchet. The coin struck on an incorrect blank will weigh exactly what the denomination of that blank would have been. An even more dramatic wrong planchet error is a coin struck on a previously struck coin of a different metal.

Denomination	Off-Metal Planchet	Circulated	AU	Unc	Choice Unc – Gem
Indian Cent	Foreign Planchet	\$1,000	\$1,500	\$5,000	\$7,500
Indian Cent	Dime Planchet	\$20,000	\$30,000	\$50,000	\$75,000
Lincoln Cent Before 1919	Dime Planchet	\$4,000	\$6,500	\$10,000	–
Lincoln Cent Before 1919	Foreign Planchet	\$750	\$2,000	\$4,000	–
Lincoln Cent 1919 – 1940	Dime Planchet	\$2,000	\$2,500	\$4,000	\$6,000
Lincoln Cent 1919 – 1940	Foreign Planchet	\$500	\$1,000	\$1,500	\$2,500
Lincoln Cent 1943 Steel	Dime Planchet	\$1,500	\$2,500	\$3,500	\$7,500
Lincoln Cent 1943 Transitional	Copper Cent Planchet	\$75,000	100,000	\$150,000	\$200,000
Lincoln Cent 1944 Transitional	Steel Cent Planchet	\$30,000	\$50,000	\$100,000	\$150,000
Lincoln Cent Wheat Ears (1941-1964)	Dime Planchet	\$500	\$600	\$1,000	\$2,000
Lincoln Cent 1965 and Later	Dime Planchet	\$125	\$150	\$200	\$350
Lincoln Cent 1964 Transitional	Clad Dime Planchet	\$2,500	\$4,000	\$7,500	\$10,000
Lincoln Cent 1965 Transitional	Silver Dime Planchet	\$2,750	\$4,500	\$6,000	\$7,500
Shield Nickel	Foreign Planchet	\$7,500	\$12,500	–	–
Shield Nickel	Cent Planchet	\$15,000	\$25,000	\$40,000	\$60,000
Liberty Nickel	Foreign Planchet	\$400	\$750	\$1,250	\$2,000
Liberty Nickel	Cent Planchet	\$2,000	\$3,000	\$6,000	\$7,500
Buffalo Nickel	Foreign Planchet	\$2,500	\$7,500	\$12,500	–
Buffalo Nickel	Cent Planchet	\$2,000	\$4,000	\$6,000	\$8,000
Jefferson Nickel Before 1950	Cent Planchet	\$250	\$500	\$750	\$1,000
Jefferson Nickel 1950 and Later	Cent Planchet	\$125	\$150	\$200	\$250
Jefferson Nickel 1943	Steel Cent Planchet	\$1,000	\$2,000	\$3,000	\$5,000
Jefferson Nickel 1964 and Earlier	Silver Dime Planchet	\$200	\$300	\$350	\$400
Jefferson Nickel 1965 and Later	Clad Dime Planchet	\$150	\$200	\$225	\$250
Roosevelt Dime Silver	Foreign Planchet	\$2,000	\$2,500	\$3,000	\$3,500
Roosevelt Dime Clad	Foreign Planchet	\$1,500	\$2,000	\$2,250	\$2,500
Roosevelt Dime 1964 Transitional	Clad Dime Planchet	\$5,000	\$6,500	\$10,000	\$12,500
Roosevelt Dime 1965 Transitional	Silver Dime Planchet	\$5,000	\$6,500	\$7,500	\$8,500
Washington Quarter Silver	Cent Planchet	\$300	\$400	\$500	\$750
Washington Quarter Silver	Nickel Planchet	\$300	\$400	\$500	\$600
Washington Quarter Clad	Cent Planchet	\$250	\$300	\$400	\$500

Mint Error News Price Guide

Off-Metals

Denomination	Off-Metal Planchet	Circulated	AU	Unc	Choice Unc – Gem
Washington Quarter Clad	Nickel Planchet	\$100	\$150	\$200	\$250
Washington Quarter	Silver Dime Planchet	\$300	\$400	\$500	\$650
Washington Quarter	Clad Dime Planchet	\$250	\$300	\$350	\$400
Washington Quarter 1964 Transitional	Clad Quarter Planchet	\$5,000	\$6,500	\$7,500	\$12,500
Washington Quarter 1965 Transitional	Silver Quarter Planchet	\$5,000	\$6,500	\$7,500	\$8,500
State Quarter	Cent Planchet	N/A	\$6,500	\$7,500	\$8,000
Delaware State Quarter	Nickel Planchet	N/A	\$500	\$650	\$750
All Other State Quarters	Nickel Planchet	N/A	\$1,000	\$1,250	\$1,500
State Quarter	Dime Planchet	N/A	\$5,000	\$5,500	\$6,000
Walking Half	Dime Planchet	N/A	N/A	N/A	\$100,000
Walking Half	Quarter Planchet	\$17,500	\$22,500	\$40,000	\$50,000
Walking Half	Foreign Planchet	\$10,000	\$15,000	\$30,000	\$40,000
Franklin Half	Cent Planchet	\$3,000	\$4,000	\$5,000	\$6,000
Franklin Half	Nickel Planchet	\$3,000	\$4,000	\$5,000	\$6,000
Franklin Half	Dime Planchet	\$3,500	\$4,500	\$5,500	\$6,500
Franklin Half	Quarter Planchet	\$600	\$750	\$1,000	\$1,250
Kennedy Half Silver 1964	Cent Planchet	\$1,000	\$1,250	\$1,500	\$2,000
Kennedy Half Silver 1964	Nickel Planchet	\$1,000	\$1,250	\$1,500	\$2,000
Kennedy Half Silver 1964	Dime Planchet	\$1,000	\$1,250	\$2,000	\$2,500
Kennedy Half Silver 1964	Quarter Planchet	\$400	\$500	\$600	\$750
Kennedy Half Clad	Cent Planchet	\$750	\$850	\$1,000	\$1,500
Kennedy Half Clad	Nickel Planchet	\$750	\$850	\$1,000	\$1,250
Kennedy Half Clad	Dime Planchet	\$750	\$850	\$1,000	\$1,400
Kennedy Half Clad	Quarter Planchet	\$350	\$400	\$450	\$500
Kennedy Half 1964 Transitional	Clad Half Planchet	\$5,000	\$6,000	\$10,000	\$12,500
Kennedy Half 1965 Transitional	Silver Half Planchet	\$5,000	\$6,500	\$7,500	\$10,000
Kennedy Half 1964 Transitional	Clad Quarter Planchet	\$5,000	\$7,500	\$10,000	\$12,500
Kennedy Half 1965 Transitional	Silver Quarter Planchet	\$6,000	\$7,500	\$8,000	\$9,000
Ike Dollar	Cent Planchet	\$10,000	\$12,500	\$15,000	\$20,000
Ike Dollar	Nickel Planchet	\$10,000	\$12,500	\$15,000	\$20,000
Ike Dollar	Dime Planchet	\$7,500	\$8,500	\$15,000	\$20,000
Ike Dollar	Quarter Planchet	\$10,000	\$12,500	\$15,000	\$20,000
Ike Dollar	Half Planchet	\$1,600	\$1,750	\$2,000	\$3,000
Ike Dollar	Foreign Planchet	\$900	\$1,000	\$1,250	\$1,500
Ike Dollar Transitional	40% Silver Planchet	\$2,750	\$3,000	\$3,500	\$5,000
SBA Dollar	Cent Planchet	N/A	\$1,750	\$3,000	\$5,000
SBA Dollar	Nickel Planchet	N/A	\$6,000	\$7,000	\$8,000
SBA Dollar	Dime Planchet	N/A	\$6,000	\$7,000	\$10,000
SBA Dollar	Quarter Planchet	N/A	\$600	\$850	\$1,000
Sac Dollar	Cent Planchet	N/A	\$12,500	\$15,000	\$20,000
Sac Dollar	Nickel Planchet	N/A	\$12,500	\$15,000	\$20,000
Sac Dollar	Dime Planchet	N/A	\$8,000	\$15,000	\$20,000
Sac Dollar	Quarter Planchet	N/A	\$1,500	\$2,000	\$2,500

Mint Error News Price Guide

Counterbrockages



A counterbrockage error involves a cap die and a previously struck coin. When a cap die strikes a previously struck coin, the obverse design from that struck coin will be impressed into the cap. The result will be a design where the cap face will be an incuse brockage. When a new blank is struck by this cap die with an incuse brockage image, the obverse will have a raised and spread image from that incuse design of the cap. This brockage impression is known as a counterbrockage.

Denomination	Circulated	AU	Unc	Choice Unc - Gem
Indian Cent	\$1,000	\$1,500	\$2,000	\$2,500
Lincoln Cent 1943 Steel	\$500	\$750	\$1,500	\$2,000
Lincoln Cent Wheat Ears	\$200	\$200	\$300	\$500
Lincoln Cent Memorial	\$40	\$50	\$75	\$100
Shield Nickel	\$1,500	\$2,000	\$4,000	\$5,000
Liberty Nickel	\$1,500	\$2,000	\$4,000	\$5,000
Jefferson Nickel	\$50	\$100	\$150	\$200
Barber Dime	\$3,000	\$5,000	\$7,500	\$10,000
Roosevelt Dime Silver	\$300	\$500	\$750	\$1,000
Roosevelt Dime Clad	\$100	\$150	\$250	\$300
Washington Quarter Silver	\$500	\$1,000	\$1,500	\$2,000
Washington Quarter Clad	\$100	\$200	\$300	\$400
State Quarter	N/A	\$750	\$1,250	\$1,500
Kennedy Half Silver	\$1,250	\$2,000	\$3,000	\$4,000
Kennedy Half Clad	\$500	\$750	\$1,250	\$1,500
SBA Dollar	N/A	\$1,500	\$2,000	\$2,500

Mint Error News Price Guide

Fold-Over Strikes



A fold-over coin is one of the most dramatic types of errors. It occurs when the blank is standing vertically between the dies. During the strike, the force is so great that it bends and folds the blank. These fold-overs can be on-center or off-center, and come in many different shapes. There are a few fold-overs with multiple errors, either with an additional strike or fold-over. Denominations above quarters are very scarce.

Denomination	AU	AU Dated	Unc	Unc Dated
Indian Cent Memorial Copper	\$1,000	\$1,250	\$1,250	\$1,500
Lincoln Cent Memorial Zinc	\$750	\$1,000	\$1,000	\$1,250
Jefferson Nickel	\$2,500	\$3,000	\$3,000	\$4,000
Roosevelt Dime Silver	\$4,000	\$5,000	\$5,000	\$6,000
Roosevelt Dime Clad	\$3,000	\$3,500	\$3,500	\$4,500
Washington Quarter Silver	\$4,000	\$5,000	\$5,000	\$10,000
Washington Quarter Clad	\$3,500	\$4,000	\$4,000	\$5,000
State Quarter	\$4,000	\$5,000	\$5,000	\$7,500

Mint Error News Price Guide

Martha Washington Test Pieces



There is one set of a Dime, Quarter and Half struck by Martha Washington dies that are permanently housed in the Smithsonian Institute, embedded in blocks of lucite. According to United States Pattern and Related Issues, by Andrew W. Pollock III, “the only trial pieces purported to have survived metallurgical testing in 1965 were the Dime, Quarter Dollar, and Half Dollar equivalent strikes in copper-nickel clad over copper.”

Mike Byers’ discovery of the Martha Washington Test Piece on a copper-zinc Cent planchet struck 10% off-center with a uniface reverse was a front page Coin World article on August 7th, 2000.

Denomination	Unc	Choice	Gem
Martha Cent	\$4,000	\$5,000	\$6,000
Martha Nickel	\$4,500	\$6,000	\$7,500
Martha Dime	\$7,500	\$10,000	\$12,500
Martha Quarter	\$5,000	\$7,500	\$10,000
Martha Half Dollar	\$5,000	\$7,500	\$10,000
Martha Dollar (SBA Planchet)	\$10,000	\$12,500	\$15,000
Martha Dollar (Sac Planchet)	\$6,000	\$7,500	\$10,000

MINT ERROR NEWS MAGAZINE

Issues of Mint Error News Magazine are available for you to read online at:

minterrornews.com



Mike Byers is the Publisher & Editor of Mint Error News Magazine

COINLINK™

Your Source for Daily Numismatic News and Resources on the Web

Search:

CoinLink operates on one simple principle...

To provide the numismatic community with access to the “best” numismatic information, news and resources on-line.

CoinLink® was started in 1995 by Anteater Design Group Inc., and is headquartered in Longwood, Florida (just northeast of Orlando).

For over 12 years we have been proud to operate the most popular and comprehensive numismatic directory on the web, referring collectors to thousands of numismatic sites, and providing unbiased access to resources that are informative and relevant to collectors and dealers alike.

The reason for our success has been a willingness to listen to our users suggestions and provide innovative solutions to aggregating the diverse and ever changing sources of numismatic information available.

CoinLink does not buy or sell coins. We have NO commercial or financial interest in any company that does. We do NOT compete against our advertisers.

Rather, our goal is to provide a platform from which dealers and collectors can find each other and stay informed about what is happening within the marketplace and within the hobby.

As we move into our 12th year of operations, we want to thank all of the users, supporters and sponsors who have made CoinLink what it is today, and who continue to shape the direction in which CoinLink will grow in the future.

Scott Purvis - President
Anteater Design Group Inc.

coinlink.com

Fred Weinberg & Co.

Dealer in Major Mint Error Coins & Currency



fredweinberg.com



(1839-57) Braid Hair Lrg 1c
Struck on Half Cent planchet NCS F Details



(1960) Jefferson 5¢ Struck Over a Struck Brass 1960
Peruvian 5 Centavo NGC MS-67



1875-CC Seated Liberty Dime PCGS MS-60
Struck 5% Off-Center.



1891 Seated Liberty Dime Struck 10% Off-Center
PCGS MS-64



1954 Washington Quarter NGC MS-63
Struck on a Nickel planchet. Full strong date.



1956 Washington Quarter Struck on a
Nickel Planchet PCGS MS-64



1843 Seat. Lib. 50c No Motto Struck 25% Off-Center
NGC VG8



2001-P Sacagawea Dollar Struck on a
2001 Kentucky State Quarter NGC MS-66



Rich Schemmer

specializing in rare error coins for the collector

richerrors.com

Richerrors@aol.com



Jefferson Nickel Struck on
Aluminum Feeder Finger Metal NGC MS64FS

\$7,500



-P Buffalo Nickel OFF Center 25%
NGC AU55

\$1,500



1972-S PROOF 25c Struck on a STRUCK
Japanese 10 Yen PCGS PR64

\$25,000



1961-S Franklin Half Rare PROOF Double Die
NGC PR66CM

\$18,500



1921-P Morgan Dollar Test / Experiment Strike
NGC

\$9,995



1999-P SBA Dollar Double Struck
NGC MS65

\$1,695



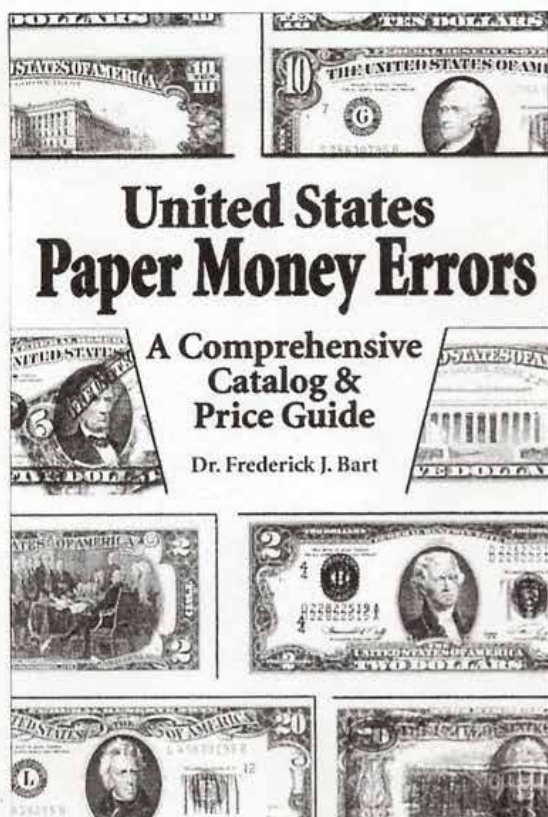
The LONG AWAITED SECOND EDITION of

United States Paper Money Errors: A Comprehensive Catalog & Price Guide

by **FREDERICK J. BART**

foreword by **HARRY E. JONES**

Will be **READY to SHIP** in a **COUPLE** of **WEEKS** ...**RESERVE YOUR COPY** now
published by **KRAUSE PUBLICATIONS**
available from Krause Publications, their distributors, your supplier, or directly from the author



- **COMPREHENSIVE INFORMATION**
on **US PAPER MONEY ERRORS**
ranging from **DOUBLE DENOMINATIONS** to **INK SMEARS**
- **COMPLETELY RE-WRITTEN**
- **UP-to-DATE PRICE GUIDE**
in **THREE GRADES**
- **550 PHOTOGRAPHS** (b & w) of
SMALL SIZE & LARGE SIZE ERRORS
- **256 PAGES**, 6" x 9", softbound
- **HISTORICAL PHOTOGRAPHS**
- **BEHIND-the-SCENES** peeks at
"INSIGHTS and INCIDENTS"
- **SUITED** for both the **ADVANCED COLLECTOR** and the **BEGINNER**
- **DATA** for the **RESEARCHER, CATALOGUER, and DEALER**

-----ORDER FORM-----

I wish to reserve--and am enclosing payment for--one copy of *United States Paper Money Errors* at \$24.95. My check will not be cashed until the book is ready to ship. I would like the book:

- autographed by the author
 inscribed, as indicated below, and autographed

Please mail the book to:

Rich Schemmer

specializing in rare error coins for the collector

richerrors.com

Richerrors@aol.com



We Are Strong Error Buyers:

We are ALWAYS looking to BUY better U.S. mint error coins. Whether a single coin or bulk lots, we offer some of the highest prices paid in today's error market. (no doubled dies, mint mark varieties, or other minor or damaged errors, please). We are looking for high-end dramatic error coins for our customers.

For our highest cash offer, simply ship the error coins to us at the address below. Be sure to include a name and a day-time telephone number where we can reach you.

Have that dramatic error you may want to sell? Contact us!!

Contact Information :

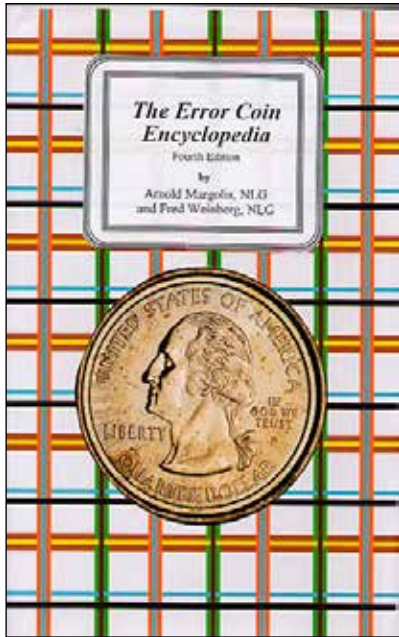
Rich Schemmer Error Coins

P.O. Box 204

Franklin Square, New York 11010

Tel/Fax: 1-516-437-5083

E-mail: RichErrors@aol.com



Entirely rewritten edition. 495 pages.
Hard Cover 4th Edition: \$39.95 postpaid

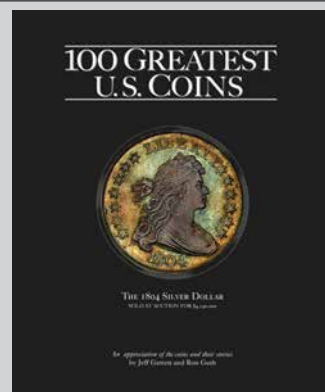
Available from:

**Arnie Margolis
&
Fred Weinberg**

Silver Towne
L.P.

50 years of quality Tradition: Make new friends
but keep the old - one is silver the other is gold.

silvertowne.com



New Book - 100 Greatest U.S. Coins
by Jeff Garrett and Ron Guth
Order your copy today!
CoinFacts.com

Harry E. Jones

Rare Coins & Currency

Sell Harry Your Mistakes!!

Leading Dealer in Error Currency For Over 30 Years. Buying and Selling
the Finest in Error Currency. Especially Want Errors on National Currency.
Also Buying Uncut Sheets of Nationals Large and Small.

7379 Pearl Rd.
Cleveland, OH 44130

440-234-3330

LM ANA PNG PCDA





NORTHEAST NUMISMATICS INC. RARE COINS · PERSONAL SERVICE

Northeast Numismatics has a million dollar plus inventory of over 3,500 certified United States and world coins. We carry every area of U.S. coinage from colonials through rare gold including proof and mint state type, commemoratives, silver dollars and much more. We also offer an extensive inventory of world coins.

Northeast Numismatics
10 Concord Crossing, Ste. 220
Concord, MA 01742
800-449-2646
www.northeastcoin.com

High quality "fresh" coins are what we are known for and take pleasure in offering. We constantly are hearing from our customers about our excellent prices and high customer service. 2003 is our 39th year of business, so order with complete confidence. Also, please keep in mind that we are always buying coins of all kinds, certified and uncertified, to fill our want lists.

Saul Teichman's Want List

I am looking for the following off-metal errors:

- Bicentennial Half on a Copper Cent Planchet
- Bicentennial Half on a Dime Planchet
- Kennedy Half on a Sacagawea Dollar Planchet
- Ike Dollar on a Nickel 5 Cent Planchet
- Ike Dollar on a Quarter Planchet
- Sacagawea Dollar on a Cent Planchet
- Sacagawea Dollar on a Nickel 5 Cent Planchet
- Sacagawea Dollar on a Dime Planchet

Saul.Teichman@ey.com



Buying and Selling

U.S. & World Coins

**Specializing in Patterns, Errors,
Pioneer Gold & Colonials**

Contact me or see me at most major coin shows.

Andy Lustig

Phone: (845) 321-0249
andylustig@earthlink.net

P.O. Box 806
Nyack, NY 10960

Coin Auctions Help

U.S. Coin Information - Guides - News - Forum



Coinauctionshelp.com is not a coin auctions website, but help for United States coin collectors who do buy coins at online auctions, but we are still much more than that. Besides being the fastest growing coin site on the web, we offer coin guides, facts, news, pictures, price guides, third party grading information, coin site links, and targeted ebay coin auctions for every major U.S. Coin series minted. If you can't find the coin or information you need, send us an email and we will send it to you and add it to our site. Let us do the research for you!

Targeted Coin Links:

First, let's talk about our targeted ebay coin auctions. Simply put, we do the ebay coin auction search for you. We spent months building links at ebay for every U.S. Coin series, and often for each date in the series. We did our best to eliminate irrelevant coin auctions so the user can click a link and go directly to only the coin type or date they wish to buy.

Although, our searches are not perfect because some coins are so rare that they are not listed on ebay often, and there are many sellers on ebay that use keyword spamming in their ebay auctions. However, most of our searches have eliminated this problem, so you don't have to spend hours trying to find the exact coin you need for your collection.

Plus, the sales generated from these links allow us to continue providing all the free information on this website.

If a certain date is not listed on ebay after you click a link, it means one is not listed at the present, but might be in the near future. So always check back often so you don't miss out on an opportunity for that rare and valuable coin!

Facts And Pictures:

We offer a page for every U.S. Coin series. A list of the page links can be found by clicking the Coin Facts tab on the navigation bar. Our coin facts pages offer the collector large pictures with important features pointed out so the mint mark, designer initials, denomination, and other design elements to allow for proper identification of coin type and varieties of that coin series. Also, each page contains important facts about the coin type, a list of rare and valuable dates for "cherry pickers", a price guide and the targetable links we mentioned earlier.

We add new information to these pages often, and at site visitors request. So check back to see what's new or ask to be added to our email list and receive email updates and contained in our Newsletter.

Coin News And Guides:

Although, we offer the latest U.S. coin news on our homepage, we don't limit the reporting to just what everyone else reports, but we find news that other site ignore or don't know about yet. Often, we will have a news articles posted on our site before the latest issue of Coin World comes out!

We offer news for latest auction sales, mint error discoveries, third party grading services, and offer guides on featured coin types, mint errors, fake coins, cleaning and identifying cleaned coins, grading coins, and many more guides to help the collector be better informed. Basically we report on the major sales and finds, and on the obscure news which allows us to offer our readers news and guides they can't find anywhere else.

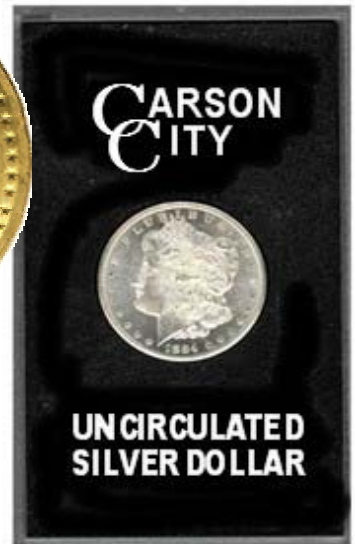
In conclusion, this is about us in the brief, but in no way describes what we do completely as we our always updating and adding to coinauctionshelp.com to make the coin collector's hobby more informative, exciting and safe. We gladly answer questions and take suggestions because only you, the visitor, know what makes a good coin site, a great coin site.

H
O
M
E
O
F
T
H
E
A
M
A
Z
I
N
G
B
R
O
K
E
N
C
C

NORTHERN NEVADA COIN

www.brokencc.com

*WE BUY & SELL
RARE COINS.
VISIT US ON THE
WEB TO VIEW
OUR
EVER-CHANGING
INVENTORY*



**3655 B RESERCH WAY
CARSON CITY, NV 89706**

1-888-836-8DOLLAR

1-888-836-5527

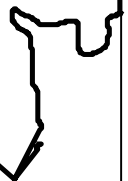
1-775-884-1660



MEMBER



MEMBER
Northern Nevada,
Inc.



Errorscope Magazine

Bi-monthly magazine for CONECA members.

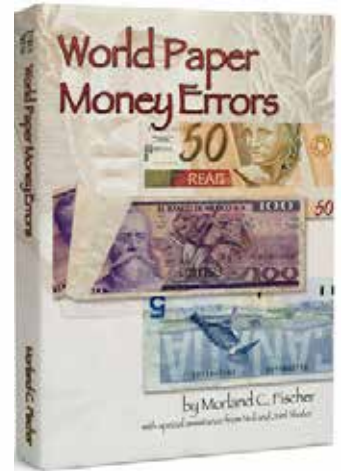
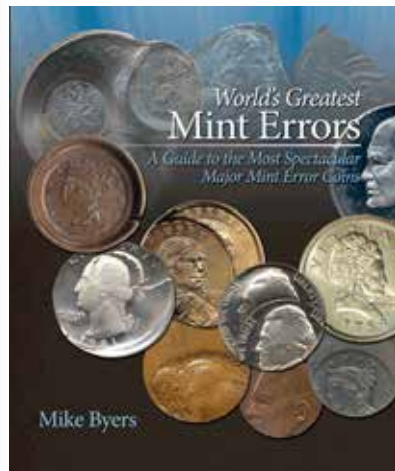


To join CONECA or to renew your membership print the membership application from conecaonline.org, fill it out, and mail it along with your membership dues to:

Robert (BJ) Neff
321 Kingslake Dr.
DeBary, Florida 32713

Transline Wholesale Supply Company

Wholesale Only 1-800-575-4007



Bart Crane

translinesupply.com

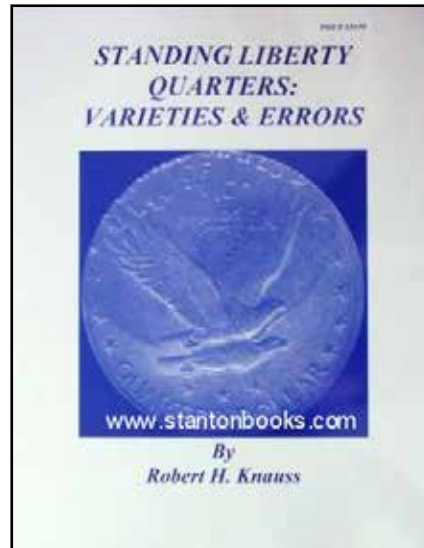
CALL TOLL FREE: **(800) 575-4007**

Business Hours

Monday - Friday: 7:30AM - 5:30PM PST

Standing Liberty Quarters: Varieties & Errors (Nov 2004)

by Robert H Knauss



Visit stantonbooks.com to order.





JIM'S COINS & STAMPS
 702 N. Midvale Blvd. B-2
 Madison, WI 53705
 (608) 233-2118

ERROR AUCTIONS

Six per year for 22 years!

YR. Subs. \$8.00, Sample \$2.50

Free Download: www.jimscoins.net

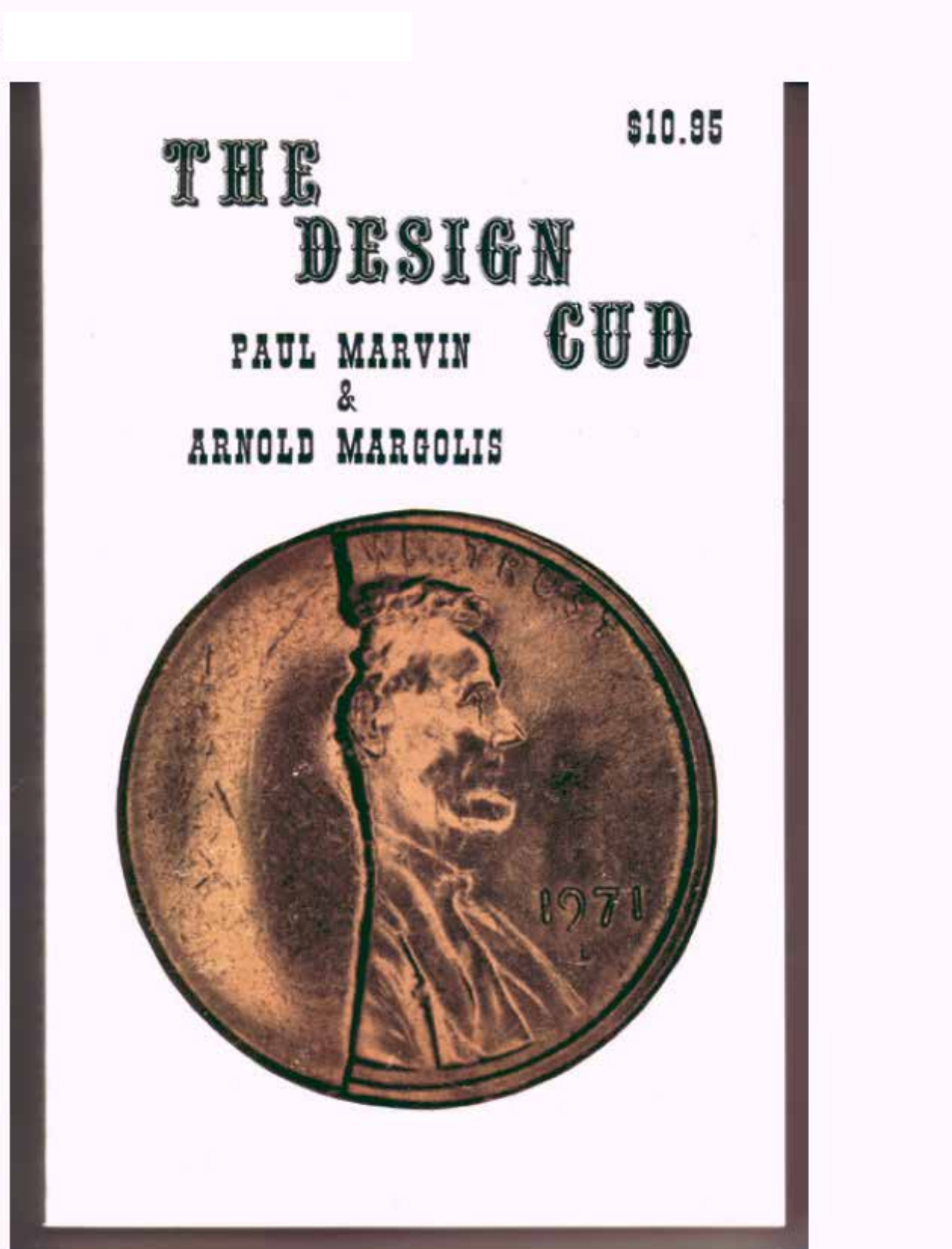
Len Roosmalen



James Essence

Jim's Coins - Books For Sale

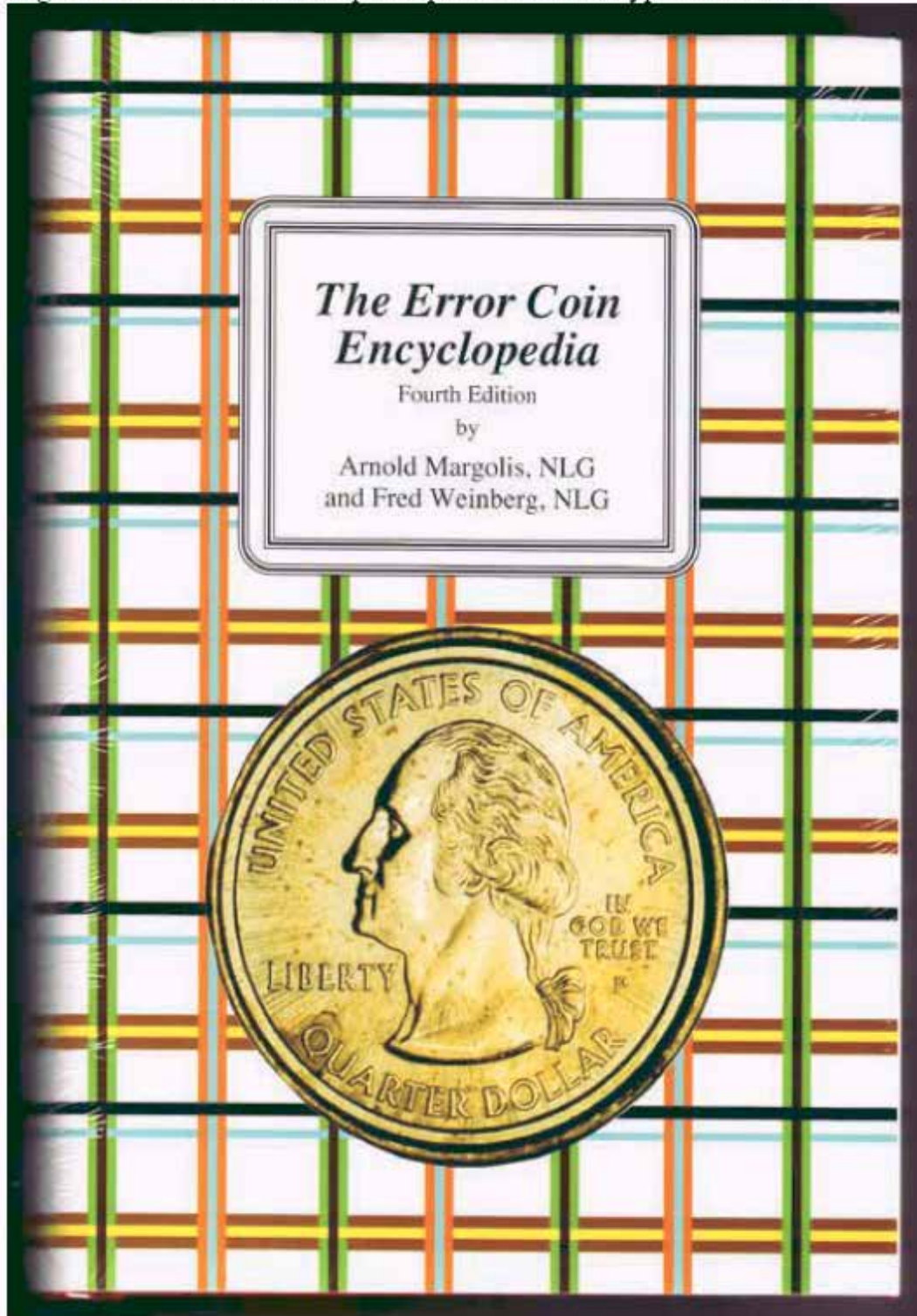
New Cud book for sale! Book assembled by Frank Leone and contains detailed catalog of legendary Sam Thurman's cud collection quarters through dollars. Photos are superb. 47 full size pages. Book Retail for \$15, and you can get yours here for only \$10 ppd!



Jim's Coins - Books For Sale

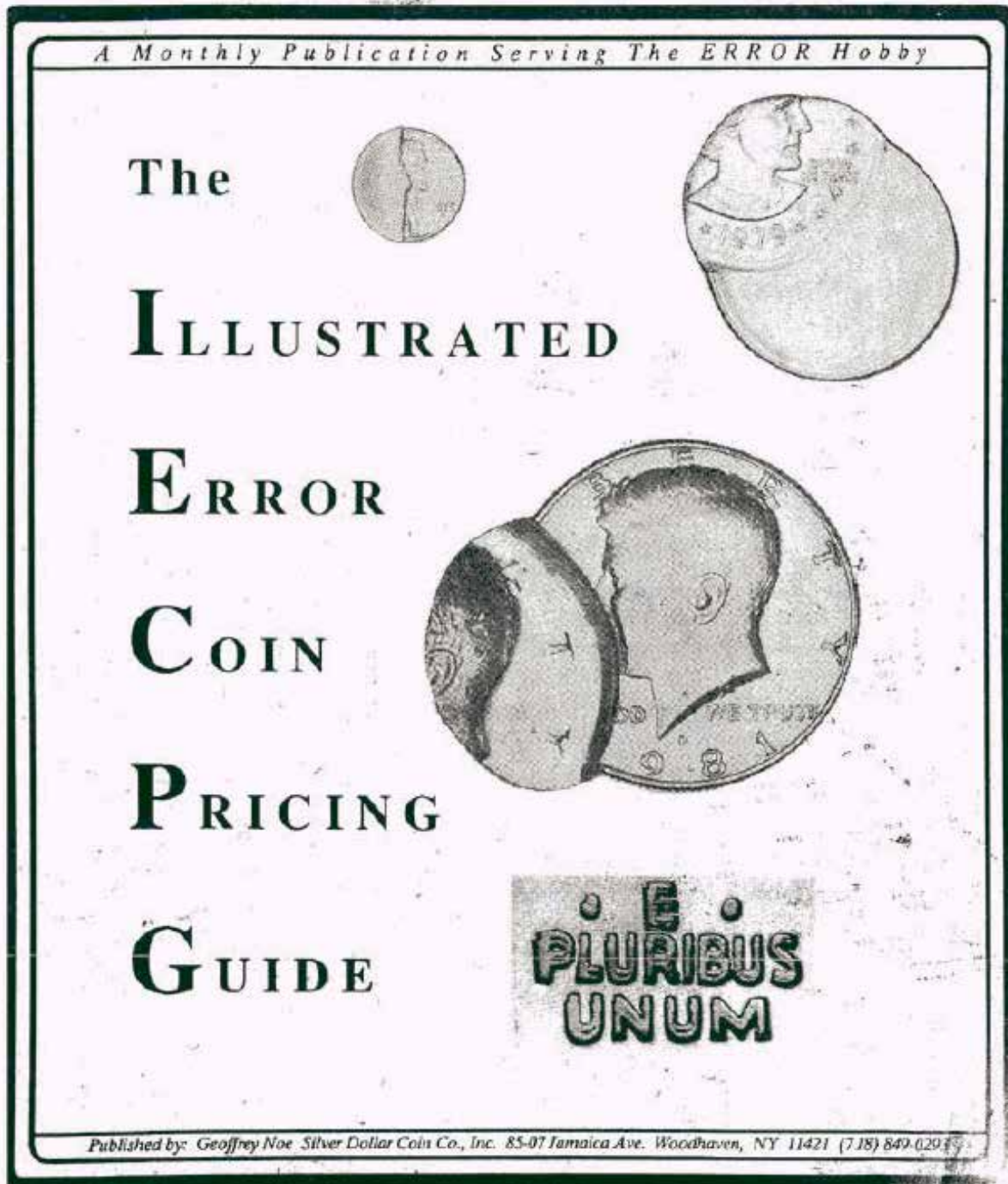
We also have a few copies of the original cud book "The Design Cud" by Paul Marvin and Arnold Margolis. At 205 pages it originally sold for \$10.95, and if you order the new book of Sam Thurman's cuds, you may purchase this original covering cents through dollars for only \$5! That's both books for a total of only \$15 ppd!

We also sell Fred Weignberg and Arnold Margolis's Error Coin Encyclopedia for \$35.95. A great reference with in-depth explanation of all types of errors:



Jim's Coins - Books For Sale

Finally for you book collectors, we have a reprint (photocopy) of IECPG, which covers prices that error coins sold for covering the late 1980's to 1992. Also has weights and measures of all U.S. coins, and weights of wrong stock coins. About 150 Full size pages. Only \$15:



We accept check, M.O., credit card, and PAYPAL. If you pay via Paypal DO NOT send to this email address. Send paypal payment to: jimcoins@sbcglobal.net

Jim's Coins Auction Catalog

MAIL BID SALE #J-45 CLOSES May 30, 2011

- 1) SEND ALL BIDS TO: JIM'S COINS, 702 N. MIDVALE BLVD. B-2, MADISON, WI 53705, OR FAX #608-233-0175, OR PHONE 608-233-2118, OR EMAIL: jimcoins@sbcglobal.net
- 2) THE HIGHEST BIDDER ACKNOWLEDGED BY THE AUCTIONEER SHALL BE THE BUYER. THE AUCTIONEER RESERVES THE RIGHT TO REJECT ANY BID OR WITHDRAW ANY LOT FROM THE SALE. BIDDERS ARE RESPONSIBLE FOR THEIR OWN ERRORS, SO DOUBLE CHECK YOUR BIDS. THE FIRST POSTMARK WINS IN CASE OF A TIE BID.
- 3) ALL SALES ARE FOR CASH AND ARE PAYABLE IMMEDIATELY UPON RECEIPT OF THE INVOICE.
- 4) AUCTIONS ARE OPEN TO ALL AND NO DEPOSIT IS REQUIRED OR DESIRED.
- 5) NO UNLIMITED BIDS ARE ACCEPTED. WINNING BIDDERS WILL BE AWARDED LOT AT A 10% ADVANCE OVER THE SECOND HIGHEST BID. IF NO OTHER BIDS ARE RECEIVED FOR A LOT, THE BIDDER WILL BE AWARDED THE LOT AT THE MINIMUM BID, OR ESTIMATE IF NO MINIMUM IS GIVEN.
- 6) ALL ITEMS ARE GUARANTEED GENUINE. BIDDERS MAY RETURN ANY ITEM NOT AS DESCRIBED.
- 7) A \$1 HANDLING CHARGE WILL BE ADDED TO ALL WINNING INVOICES. BID EARLY AND BID OFTEN. THANKS! - LEN & JIM

1	1999	\$5	AMERICAN EAGLE 1/10 OZ GOLD ITH CURVED CLIP AT 6:30 NGC	MS69	MB	\$225.00	
2	1884 O	DOLL	SO CALLED O OVER CC VAM 10 ANACS	MS63	MB	\$200.00	
3	1887	DOLL	"ALLIGATOR EYE" VAM 12A ANACS	MS64	MB	\$99.00	
4	(2007)	DOLL	G. WASHINGTON WITH MISSING EDGE LETTERING PCGS	MS64	MB	\$49.00	
5	(2007)	DOLL	G. WASHINGTON WITH MISSING EDGE LETTERING PCGS	MS66	MB	\$125.00	
6	2007 P	DOLL	G. WASHINGTON WEAK EDGE LETTERS POS. B SATIN FINISH PCGS	MS66	MB	\$99.00	
7	2007 D	DOLL	G. WASHINGTON WEAK EDGE LETTERING POSITION B PCGS	MS64	MB	\$22.00	
8	2007 P	DOLL	J. ADAMS OBVERSE DIE GOUGE NGC	MS67	MB	\$39.00	
*	9	2007 S	DOLL	T. JEFFERSON DOUBLE STRUCK WITH ROTATION BEST SEEN ON OBV LETTERING BACK OF HEAD, REV LIBERTY'S ARM SUPER NGC	PR69	MB	\$730.00
*	10	(2009)	DOLL	NATIVE AMERICAN VERY DRAMITIC DOUBLE STRIKE AND MISSING EDGE LETTERING 1 YEAR TYPE PCGS	MS64	MB	\$2,400.00
11	1964	HALF	5% CURVED CLIP 10:30 NICE BLAKESLY EFFECT NGC	MS61	MB	\$25.00	
*	12	1968 D	HALF	50% INDENT 4:00 (LOOKS LIKE THRU A CLAD LAYER) ANACS	AU50	MB	\$230.00
*	13	1981 D	HALF	HUGE BROADSTRIKE WITH 90% INDENT 11:30 WOWER LARGER THAN A DOLLAR PCGS	MS60	MB	\$1,150.00
14	1965	HALF	SPECIAL MINT SET WITH DOUBLED DIE OBVERSE-005 DMR-7 ANACS	MS66	MB	\$18.00	
15	1968 S	HALF	DOUBLED DIE OBVERSE ANACS	PR66	MB	\$23.00	
16	1969 S	HALF	DOUBLED DIE OBVERSE & REVERSE ANACS	PF65	MB	\$25.00	
17	1971 D	HALF	DOUBLED DIE OBVERSE ANACS	MS65	MB	\$32.00	
18	1982 P	QUAR	STRUCK ON NICKEL PLANCHET PCGS	AU58	MB	\$199.00	
*	19	1982 S	QUAR	OBVERSE WITH HEAVY CUSTARD-PIE-LIKE STRUCK THRU NGC	PF68	MB	\$795.00
20	1961 D	QUAR	D OVER D RPM RPM-2 ANACS	MS64	MB	\$18.00	

Jim's Coins Auction Catalog

21	2000	QUAR	N.H, 55% OFF CENTER 4:00 NGC	MS65	MB	\$232.00
22	2005 P	QUAR	W.V, REVERSE DIE BREAK (CUD) 4:00 REVESE NGC	MS66	MB	\$29.00
23	1959 D	DIME	D OVER INVERTED D FS #511 FINEST KNOWN PCGS	MS66	MB	\$125.00
24	N.D.	NICK	TYPE 1 ELLIPTICAL CLIP BLANK 4.6 GRAMS NEW ENGLAND COLLECTION NGC	UNC	MB	\$150.00
25	2004 P	NICK	PEACE MEDAL TYPE WITH DOUBLED DIE OBVERSE PCGS	MS64	MB	\$99.00
26	1952	NICK	5% OFF CENTER ON A DIME PLANCHET 2.5 GRAMS NGC	AU53	MB	\$625.00
27	1964	NICK	STRUCK ON CENT PLANCHET 3.08 GRAM NGC BROWN	AU68	MB	\$235.00
28	1964 D	NICK	STRUCK ON A CENT PLANCHET BLUE & VIOLET TONED PCGS RB	MS63	MB	\$340.00
29	1977	NICK	STRUCK ON CENT PLANCHET MOSTLY RED PCGS RB	MS64	MB	\$350.00
30	1980 P	NICK	STRUCK ON CENT PLANCHET 3.06 GRAMS NGC BN	MS64	MB	\$270.00
31	(1945)	NICK	STRUCK ON A NETHERLANDS E.I. 25c PLANCHET SILVER-DIME-SIZED RAINBOW TONING NGC	AU50	MB	\$850.00
*	32 1981 P	NICK	50% CURVED CLIP 2:00 + 5% CLIP 10:30 PCGS	MS63	MB	\$125.00
*	33 198(4)	NICK	OBVERSE DIE CAP LARGE WITH PLAN SPLIT 4:00 NGC	MS64	MB	\$740.00
*	34 1995 P	NICK	HUGE BROADSTRIKE LARGER THAN 25c 6 FULL STEPS NGC	MS64	MB	\$45.00
35	1969 S	NICK	20% OFF CENTER + FULL STEPS? 10:30 NGC	MS66	MB	\$450.00
*	36 1977	NICK	DOUBLE STRUCK, 2ND 60% OFF CENTER 2:30 UNIFACE REVERSE NEAT PLACEMENT PCGS	AU58	MB	\$165.00
37	N.D.	NICK	DOUBLE STRUCK, 30% O/C 5:00 DSBS, + 90% OFF CENTER 10:00 UNIFACE NGC FULL STEPS	MS64	MB	\$125.00
38	1999 P	NICK	BROADSTRUCK, WITH OBVERSE INDENT 10:30 NGC FULL STEPS	MS66	MB	\$39.00
*	39 1945 P	NICK	55% INDENTED OBVERSE 8:00 ON WAR NICKLE RARE! PCGS	MS64	MB	\$850.00
*	40 1996 P	NICK	LARGE MULTI-SLAB 2 OFF CENTER 60% MATED PAIR CHAIN STRIKES PERFECT EXAMPLE EX. RARE TO FIND ON NICKEL NGC	MS66	MB	\$850.00
41	1965	CENT	PARTIAL COLLAR WITH 10% INDENT 1:00 ANACS RB	MS64	MB	\$16.00
42	1945 D	CENT	1945/5 D STRONG SHIFTED 5 ACG RED	MS66	MB	\$4.00
43	1970 S	CENT	STRUCK ON CLAD DIME PLANCHET RARE S MINT PCGS	MS61	MB	\$690.00
*	44 1806 BB	OTHER	FRENCH 5 FRANC DOUBLE STRUCK IN COLLAR LARGER THAN SIL \$ PCGS	VF20	MB	\$690.00
*	45 1990	OTHER	POLAND 100 ZOL. DOUBLE STRUCK, 2ND 60% OFF CENTER UNIFACE COIN EXPANDED TO BE TOO BIG TO FIT IN SLAB SILVER PCGS TAG ONLY	MS67	MB	\$450.00
*	46 1972	OTHER	SET OF 3 PHILLIPPINE PISO STRUCK ON U.S, 50 CENT, 5 CENT, & 1 CENT ALL NGC	MS64	MB	\$1,250.00
*	47 1990	\$100	FED RESERVE NOTE (FRN) STRONG FULL FACE OFFSET ON REVERSE PCGS PPQ	EF40	MB	\$360.00
*	48 1986	\$100	F.R.N, VERY WEAK UNDER INKED REVERSE SMALL PENNED 4 OBV	EF	MB	\$199.00
*	49 1977	\$20	F.R.N, FULL MEDIUM OFFSET OBVERSE ON REVERSE	EF	MB	\$165.00
50	1977	\$20	F.R.N, DARK REVERSE OFFSET ON UPPER LEFT OBVERSE CORNER	FN	MB	\$35.00
*	51 1985	\$20	F.R.N, SUPER DARK GREEN INK SMEAR REVERSE 1 3/4" WIDE NEAR CENTER PCGS PPQ	EF40	MB	\$230.00
*	52 1977	\$10	F.R.N, FULL FACE TO BACK OFFSET MEDIUM DARK PCGS PPQ	AU53	MB	\$185.00

Jim's Coins Auction Catalog

53	1985	\$10	F.R.N, SMALL REVERSE GREEN INK SMEAR LEFT CENTER BOTTOM	EF	MB	\$23.00	
*	54	1950 B	\$5	F.R.N, NICE OBV & REV GUTTER + MULTI SMALL GUTTERS	VF	MB	\$43.00
*	55	1977 A	\$5	F.R.N, NEAT WHITE GUTTER CENTER TOP TO BOTTOM	VF	MB	\$38.00
	56	1985	\$5	F.R.N, SMALL GREEN INK SMEAR BOTTOM REVERSE	VF	MB	\$24.00
*	57	1977	\$5	F.R.N, STRONG GREEN INK SMEARS REVERSE NEAR CENTER	FN	MB	\$43.00
*	58	1995	\$5	F.R.N, STRONG GREEN WET INK TRANSFER ACROSS 3/4 TOP OBVERSE HEAVY PMG EPQ	GM66	MB	\$210.00
	59	1985 G	\$5	F.R.N, FULL BACK TO FRONT OFFSET LIGHT PCGS PPQ	VC64	MB	\$125.00
*	60	1975 K	\$5	F.R.N, PRE FACE PRINT FOLD OVER LEFT END NEAAT SEE PHOTO PCGS PPQ	VF30	MB	\$99.00
*	61	1917	\$1	LEGAL TENDER, LARGE SIZE NOTE, GUTTER FOLD NEAR CENTER LEFT END TO 1 INCH IN BOTTOM PMG	VF25	MB	\$435.00
*	62	1935 E	\$1	SILVER CERTIFICATE, 2 SEALS & SERIAL NUMBER PRINTED CROSS WAYS ON REVERSE UNIQUE?? PMG	CF15	MB	\$980.00
*	63	1935 D	\$1	SILV CERT, 30% OBSTRUCTED PRINTING BLUE SEAL PMG EPQ	CU64	MB	\$165.00
*	64	1935 A	\$1	SILV CERT, NICE MULTI GUTTERS TOP TO BOTTOM OBVERSE	VG	MB	\$38.00
*	65	1935 E	\$1	SILV CERT, GUTTER FOLD TOP TO BOTTOM OBVERSE WITH INSPECTORS REJECT RED STICKER RT END	AU	MB	\$135.00
*	66	1935 E	\$1	SILV CERT, WIDE GUTTER FOLD WHITE OBV & REV MID LEFT SIDE	EF+	MB	\$45.00
	67	1988 A	\$1	F.R.N, WOWER MISMATCHED SERIAL NUMBERS ON A REPLACEMENT STAR NOTE	AU58	MB	\$1,295.00
*	68	1981	\$1	F.R.N, LARGE FOLD OVER CUTTING ERROR AFTER COMPLETE PRINTED PCGS PPQ	GM65	MB	\$750.00
*	69	1981	\$1	F.R.N, LARGE MULTI FOLD ERROR LOW RIGHT CORNER NEAT SEE PHOTO PMG	CU64	MB	\$160.00
*	70	2003 A	\$1	F.R.N, MISALIGNED CUTTING ERROR 3/8 INCH NEXT NOTE ON LEFT END OBV & REV , SER # & SEAL IN RIGHT PLACE PMG EPQ	GM65	MB	\$680.00
*	71	1988 A	\$1	F.R.N, MAJO GREEN INK SMEAR OVER MOST REVERSE	RF	MB	\$85.00
	72	1995	\$1	F.R., FULL LIGHT OFFSET OBVERSE ON OBVERSE	FN	MB	\$89.00
	73	1981	\$1	F.R.N, REVERSE MISALIGNED TO LEFT & UP SO HARLY ANY BORDER	VG	MB	\$16.00
	74	1981	\$1	F.R.N, MINOR MISALIGNMENT OF OBVERSE OVERPRINT PCGS PPQ	CU63	MB	\$23.00
	75	1995	\$10	F.R.N, DARK OBVERSE OFFSET ON REVERSE OVER INKED OBVERSE	VF	MB	\$185.00
	76	1899 O	DOLL	MICRO MINT MARK O VAM-4	VG	MB	\$39.00
	77	1888 O	DOLL	DOUBLED DIE OBVERSE "HOT LIPS"	AG	MB	\$39.00
	78	1921	DOLL	WIDE INFREQUENT REEDING	AU58	MB	\$39.00
	79	1921 S	DOLL	RIM CLIP BELOW 9 IN DATE	EF	MB	\$39.00
	80	2007	DOLL	ADAMS DOUBLE EDGE LETTERING WITH NEAT PLACEMENT OF UPSIDEDOWN DATE RIGHT NEXT TO RIGHT-SIDE-UP DATE	AU	MB	\$65.00
	81	1922 D	DOLL	MULTI DIE CRACKS, PRE CUD OVER Y OBVERSE 2:00	AU	MB	\$45.00
	82	N.D.	DOLL	TYPE 1 IKE PLANCHET	UNC	MB	\$129.00
*	83	1972 S	DOLL	SILVER IKE 1% CLIP 4:30	BU	MB	\$99.00
*	84	1972	DOLL	3% CURVED CLIP 7:00 RAINBOW TONING	BU	MB	\$24.00
*	85	1999 P	DOLL	SUZY STRUCK 40% OFF CENTER 1:00	BU	MB	\$495.00

Jim's Coins Auction Catalog

86	1987	ASE	DIE TRIAL? VERY WEAK IN CENTER	BU	MB	\$48.00	
87	N.D.	DOLL	PRESIDENTIAL TYPE 2 PLANCHET	BU	MB	\$79.00	
88	N.D.	DOLL	PRESIDENTIAL TYPE 2 PLANCHET PARTIAL CUT & BENT	BU	MB	\$21.00	
89	N.D.	DOLL	SAC OR PRES CHOPPED WEBBING, AFTER BLANKS PUNCHED, BOW TIE SHAPE	BU	MB	\$22.00	
90	N.D.	DOLL	SAC OR PRES CHOPPED WEB AS ABOVE ONLY T SHAPE	BU	MB	\$15.00	
91	N.D.	HALF	TYPE 2 90% SILVER TYPE 2 PLANCHET	UNC	MB	\$60.00	
92	N.D.	HALF	CLAD TYPE 2 PLANCHET	UNC	MB	\$60.00	
93	1825	HALF	EDGE LETTERING ERROR, READS "ORLF A DOLLAR"	FIN	MB	\$99.00	
94	1942 S	HALF	RIM CLIP 11:30	VG	MB	\$22.00	
*	95	1971 D	HALF	KENNEDY HALF STRUCK 50% OFF CENTER ON 25c-SIZE MEXICO PLANCHET--WOW!	EF	MB	\$650.00
*	96	1974 D	HALF	REVERSE STRUCK THRU CENT? PLANCHET, 75% STRUCK THRU 3:00 GHOST EAGLE SUPER NEAT	AU	MB	\$495.00
97	1968 D	HALF	STRUCK THRU REEDING REVERSE 3:00 TO 8:00	AU	MB	\$45.00	
98	1973 D	HALF	2 COINS BOTH WITH NICE RIM BURRS ON DATE AREA	BU	MB	\$25.00	
99	1966	HALF	STILL IN SPECIAL MINT SET AS ISSUED, DOUBLED DIE OBVERSE 13-O-111, FS 103	BU	MB	\$80.00	
100	1964 D	HALF	DOUBLED DIE OBVERSE FS-104	UNC	MB	\$24.00	
*	101	1983 P	HALF	UNCENTERED BROADSTRUCK SLIGHT PARTIAL COLLAR	BU	MB	\$60.00
102	1983 P	HALF	UNCENTERED BROADSTRIKE NO COLLAR LOOKS 5% OFF CENTER	BU	MB	\$85.00	
103	1967	HALF	DISK CLIP 9:00 + STRUCK IN TOP OF HEAD	AU	MB	\$11.00	
104	1974	HALF	DISK CLIP 5:00 + 3% CURVED CLIP 10:30	BU	MB	\$12.00	
105	N.D.	QUAR	CLAD TYPE 2 PLANCHET	UNC	MB	\$5.00	
106	N.D.	QUAR	DOUBLE STRUCK CAP DRAMATIC!! STRANGE METAL SOLDER REVERSE AFTER STRIKE	UNC	MB	\$325.00	
*	107	1982 P	QUAR	STRUCK ON NICKEL PLANCHET	AU	MB	\$199.00
108	1976	QUAR	10% OFF CENTER 4:00 EX BOWERS AUCTION 1990 STILL IN THEIR HOLDER	UNC	MB	\$65.00	
109	1941 S	QUAR	LARGE S, FS-25-1941S-503	VF	MB	\$11.00	
110	1956	QUAR	TYPE 2 REVERSE FS-25-1956-901	AU	MB	\$12.00	
111	1957	QUAR	TYPE 2 REVERSE (PROOF) FS-25-1957-901	EF	MB	\$7.00	
112	1958	QUAR	TYPE 2 PROOF REVERSE FS-25-1958-901	VF	MB	\$7.00	
113	1959	QUAR	TYPE 2 PROOF REVERSE FS-25-1959-901	VF	MB	\$7.00	
114	1960	QUAR	TYPE 2 PROOF REVERSE FS-25-1960-901	EF	MB	\$7.25	
115	1961	QUAR	TYPE 2 PROOF REVERSE FS-25-1961-901	EF	MB	\$7.25	
116	1962	QUAR	TYPE 2 PROOF REVERSE FS-25-1962-901	AU	MB	\$14.00	
117	1963	QUAR	TYPE 2 PROOF REVERSE FS-25-1963-901	AU	MB	\$7.50	
118	1964	QUAR	TYPE 2 PROOF REVERSE FS-25-1964-901	AU	MB	\$7.50	
*	119	1965	QUAR	UNCENTRED BROADSTRIKE	UNC	MB	\$15.00
120	1965	QUAR	RIM CLIP 4:00	AU	MB	\$3.50	
121	1974 D	QUAR	5% CURVED CLIP 12:00	VF	MB	\$3.75	
122	ASST	QUAR	LOT 17 COINS IN 2x2 HOLDERS WITH DIE CRACKS	AU	MB	\$7.00	
123	1999 P	QUAR	DE, LARGE HEAVY STRUCK THRU CENTER REVERSE	UNC	MB	\$16.00	
124	1999 P	QUAR	GA, WITH UNUSUAL HEAVY DIE POLISH LINES OBV & REV	BU	MB	\$2.50	
*	125	1999 P	QUAR	CT, UNCENTERED BROADSTRIKE WITH SLIGHT PARTIAL COLLAR	BU	MB	\$19.00
*	126	1999 P	QUAR	CT, DOUBLE STRUCK, 2ND 75% OFF CENTER 4:00 DIE STRUCK BOTH SIDES	BU	MB	\$349.00
*	127	1999 P	QUAR	NJ, DOUBLE STRUCK, 2ND 70% OFF CENTER 6:30 UNIFACE REVERSE	BU	MB	\$349.00
128	1999 P	QUAR	GA, UNCENTERED BROADSTRUCK EDGE DING	BU	MB	\$15.00	

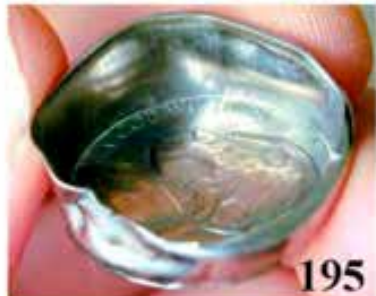
Jim's Coins Auction Catalog

6:00 LOOKS OFF CENTER						
129	2000 P	QUAR	SC, UNCENTERED BROADSTRIKE	BU	MB	\$24.50
130	2002 P	QUAR	IN, BROADSTRUCK WITH SLIGHT TILT PARTIAL COLLAR	BU	MB	\$14.00
* 131	2003 P	QUAR	IL. UNCNTERED BROADSTRIKE WITH SLIGHT PARTIAL COLLAR	BU	MB	\$19.00
132	2003 P	QUAR	AL, STRUCK WITH LEVEL PARTIAL COLLAR	UNC	MB	\$16.00
* 133	2005 D	QUAR	KS, STRUCK ON ELLIPTICAL CLIPPED PLANCHET, 21mm WIDE SHOULD BE 24.3mm WOWSER FOOTBALL SHAPE	CHBU	MB	\$310.00
134	2007 D	QUAR	ID, NO "DE" DESIGNERS INTIAL ON EAGLE + REGULAR COIN	BU	MB	\$3.50
135	2007 P	QUAR	WY, OBERSE & REVERSE STRUCK THRU LIKE MOVING HORSE & RIDER	BU	MB	\$3.50
136	2008 P	QUAR	HI, STRONG DIE POLISH LINES LIKE FLYING KING	BU	MB	\$3.50
* 137	(1999)	QUAR	PA, 85% OFF CENTER 11:00 SHOWS "PENNSY" ON REVERSE DSBS NEAT	BU	MB	\$90.00
138	2009 P	QUAR	DC, "EXTRA KEY" WDDR-007, EXTRA PIANO KEYS	BU	MB	\$24.00
139	N.D.	DIME	CLAD TYPE 2 PLANCHET	UNC	MB	\$3.00
140	1940 S	DIME	HEAVY DIE POLISH MISSING BRIDGE OF NOSE	BU	MB	\$16.00
141	1938 D	DIME	RPM #1	VG+	MB	\$5.00
142	1940 D	DIME	RPM #1	VF	MB	\$6.00
143	1945 D	DIME	D OVER HORIZ D FS-10-1945D-506	VFEF	MB	\$225.00
144	1951 S	DIME	RPM #2	FIN	MB	\$6.50
145	1958 D	DIME	RPM #1	AU	MB	\$6.50
146	1964 D	DIME	RPM #2	BU	MB	\$10.00
147	N.D.	DIME	OBERSE MIRROR BROCKAGE + SUPER STRONG CLASHED DIE REVERSE	BU	MB	\$225.00
148	1940 S	DIME	RIM CUD 4:00 REVERSE	GEM	MB	\$22.00
* 149	1964 D	DIME	LARGE CUD TOP OF HEAD RDC-64DD-1B	AU	MB	\$59.00
* 150	1973	DIME	50% OFF CENTER 1:30 SPOT REV	BU	MB	\$29.00
* 151	1981 P	DIME	50% OFF CENTER 12:30	BU	MB	\$28.00
152	N.D.	DIME	85% OFF CENTER 1:30 DSBS (DIE STRUCK BOTH SIDES)	UNC	MB	\$14.00
153	N.D.	DIME	SILVER, 90% OFF CENTER DIE STRUCK BOTH SIDES	EF	MB	\$69.00
154	1956	DIME	5% CURVED CLIP 4:00	VF	MB	\$3.50
155	1957 D	DIME	RIM CLIP 7:00	VF	MB	\$3.50
* 156	19561D	DIME	5% CURVED CLIP 4:00	AU	MB	\$3.50
* 157	1964 D	DIME	5% CURVED CLIP 1:30 + 5% CURVED CLIP[4:00	UNC	MB	\$11.00
158	1966	DIME	4% CURVED CLIP 5:30	BU	MB	\$3.50
159	1979	DIME	4% CURVED CLIP 7:00	BU	MB	\$2.50
160	2004	DIME	3% CURVED CLIP 7:00 VERY SCARCE DATE	CHBU	MB	\$36.00
161	1985 D	DIME	WEAK STRIKE 2:00 TO 9:00 AROUND RIM	BU	MB	\$4.00
162	1970 D	DIME	VERY WEAK STRIKE OBV & REV TRIAL??	UNC	MB	\$35.00
163	1985 P	DIME	HIGH THICK RIMS	UNC	MB	\$2.50
164	1985 P	DIME	MISALIGNED DIE THICK RIMS	BU	MB	\$3.50
* 165	1999 P	DIME	UNCENTERED BROADSTRIKE + DIE CRACK ON NOSE, + REEDED EDGE MULTI STRIKE	BU	MB	\$26.00
166	1964 D	DIME	POINTED 9 VARIETY	AU	MB	\$3.50
168	1985 D	DIME	FLAT RIM OBERSE 11:00 TO 5:00-	UNC	MB	\$1.50
169	199(4)D	DIME	VERY LOW PRESSURE STRIKE PAIR OF COINS	BU	MB	\$110.00
170	ASST	DIME	13 CLAD DIMES IN 2x2 WITH DIE CRACKS & MISALIGNED DIES	ASST	MB	\$3.00
171	ASST	DIME	12 CLAD DIMES IN 2x2'S MISALIGNED & DIE CRACKS	ASST	MB	\$3.00
172	ASST	DIME	ROLL 35 CLAD DIMES AS RECEIVED SAYS DIE CHIPS & DIE CRACKS ON HEAD & FACE	ASST	MB	\$6.00
173	1906	NICK	LAMINATION 2:00 TO 4:00 IN FIELD	EF	MB	\$15.00

Jim's Coins Auction Catalog

173	1883NC	NICK	DISK CLIP 10:00 + DIE CRACKS AT DATE & 7:30 TO STAR TO BUST	EF	MB	\$23.00
174	1908	NICK	LARGE DIE CHIP BOTTOM OF NECK	VG	MB	\$3.00
175	1915 D	NICK	ACID TREATED DATE WITH REVERSE LAMINATIONS GOOD DATE	AG	MB	\$4.00
176	1918	NICK	OBVERSE & REVERSE LAMINATIONS	VG	MB	\$4.50
177	1918 S	NICK	REVERSE LAMINATIONS	GD	MB	\$10.00
178	1918 S	NICK	REVERSE LAMINATIONS 12:00 TO 3:30	GD	MB	\$10.00
179	1920	NICK	LAMINATION OBVERSE 9:30 TO MID HEAD	GD	MB	\$2.00
180	1920 S	NICK	OBVERSE LAMINATION	GD	MB	\$3.00
181	1930 S	NICK	SMALL LAMINATION OBV & REV	FN	MB	\$2.00
182	1935	NICK	CURVED RIM CLIP 8:00	GD	MB	\$7.00
183	1937 S	NICK	MINOR REVERSE LAMINATION	FN	MB	\$1.50
184	1931 S	NICK	RPM #1	FN	MB	\$22.00
185	1935	NICK	DOUBLED DIE REVERSE DDR-1-R-V FS-05-018	FN	MB	\$90.00
186	1936 S	NICK	RPM #1 FS-05-1936S-501	VG	MB	\$12.50
187	1937 D	NICK	RPM #1	FN	MB	\$4.75
188	1937 S	NICK	RPM #2	FN+	MB	\$6.50
189	1938 D	NICK	RPM #1 FS-05-1938D-501	EF	MB	\$10.00
190	1938 D	NICK	RPM #2	FN+	MB	\$5.50
191	1958 D	NICK	RPM #1	VF	MB	\$4.50
192	1942 D	NICK	RPM #1 D OVER HORIZONTAL D FS-05-1942D-501	FN	MB	\$55.00
*	193	1980 P	NICK STRUCK ON CENT PLANCHET	AU	MB	\$199.00
*	194	N.D.	NICK STRUCK ON CLAD DIME PLANCHET	AU	MB	\$252.00
195	1970 D	NICK	1/2 INCH HIGH VERY DEEP CAP SUPER EARLY DATE	BU	MB	\$1,450.00
196	N.D.	NICK	WITHDRAWN *****	AG	MB	\$1,000.0
197	1940 S	NICK	FILLED DIE STRIKE	GD	MB	\$0.50
198	1941 S	NICK	LARGE S	FN	MB	\$2.00
199	1998 P	NICK	FILLED DIES DETAILS BOTH SIDES EXTREMELY WEAK	EF	MB	\$1.00
200	1964	NICK	PARTIAL COLLAR WITH HIGH WIRE RIM REV & CUPPED UP OBVERSE	BU	MB	\$15.00
201	1964	NICK	WDDR=05, DOUBLED EPU, USA, FIVE, & MO	PRF	MB	\$20.00
202	1940	NICK	RIM CLIP 2:30	VF	MB	\$2.00
203	1943 P	NICK	RIM CLIP 6:30	EF	MB	\$3.50
204	1944 D	NICK	2% CURVED CLIP 2:00	GD	MB	\$2.50
205	1945 P	NICK	3% CURVED CLIP 1:00	FN	MB	\$3.50
206	1945 S	NICK	RIM CLIP 6:00 WITH NICE BLAKESLY EFFECT	FN	MB	\$3.50
207	1947	NICK	3% CURVED CLIP 7:30 SCRATCH REVERSE	FN	MB	\$2.50
208	1954 S	NICK	3% CURVED CLIP 10:30	VF	MB	\$3.50
209	1956	NICK	RIM CLIP 3:00	VF	MB	\$0.95
210	1960	NICK	2% CURVED CLIP 11:30 + RIM CLIP 6:30	EF	MB	\$1.50
211	1960	NICK	RIM CLIP 6:00	VF	MB	\$2.00
212	1960	NICK	3% CURVED CLIP 8:30	AU	MB	\$2.50
*	213	1964 D	NICK STRAIGHT CLIP 9:30 TO 12:00	EF	MB	\$4.00
214	1964 D	NICK	LOT OF 4 COINS WITH 2 CLIPS EACH	AU	MB	\$5.50
215	1968 S	NICK	LOT OF 3 COINS 5% CURVED CLIPS	BU	MB	\$4.50
216	1974	NICK	2% CURVED CLIP 11:30	AU	MB	\$2.50
217	(1988P)	NICK	7% CURVED CLIP 4:00 EX WORN DIE REV	AU	MB	\$3.50
218	1940	NICK	LAMINATION OBVERSE 4:00 TO 10:00	FN	MB	\$1.50
219	1943 P	NICK	LAMINATION 35% REV 5:30 TO 10:00	VG	MB	\$8.00
220	1945 P	NICK	LAMINATIONS 8:30 TO 10:00 REVERSE	FN	MB	\$2.50
221	1944 P	NICK	MULTI LAMINATIONS 6:00 TO 12:00	FN	MB	\$2.50
222	1945 P	NICK	LAMINATION REVERSE 10:00 TO 2:00	FN	MB	\$2.50

Jim's Coins Auction Catalog



Jim's Coins Auction Catalog



48



47



49



54



55

Jim's Coins Auction Catalog



51



52



58



60



57

Jim's Coins Auction Catalog



68



70



62



63



61

Jim's Coins Auction Catalog



69



64



65

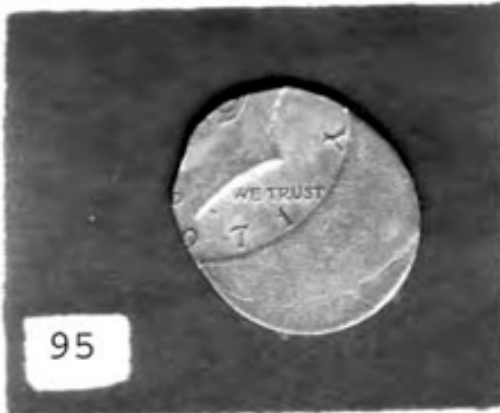


66

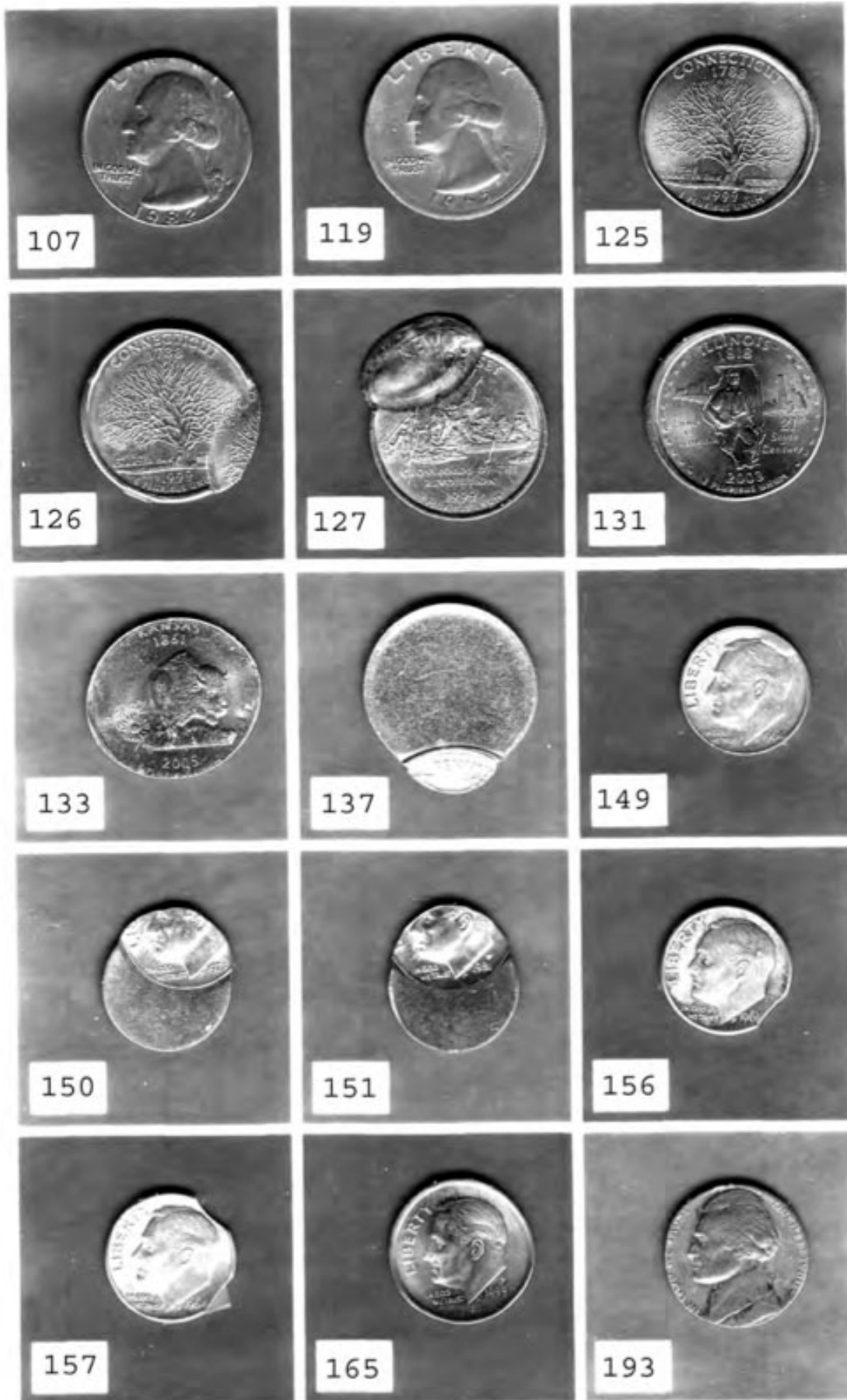


71

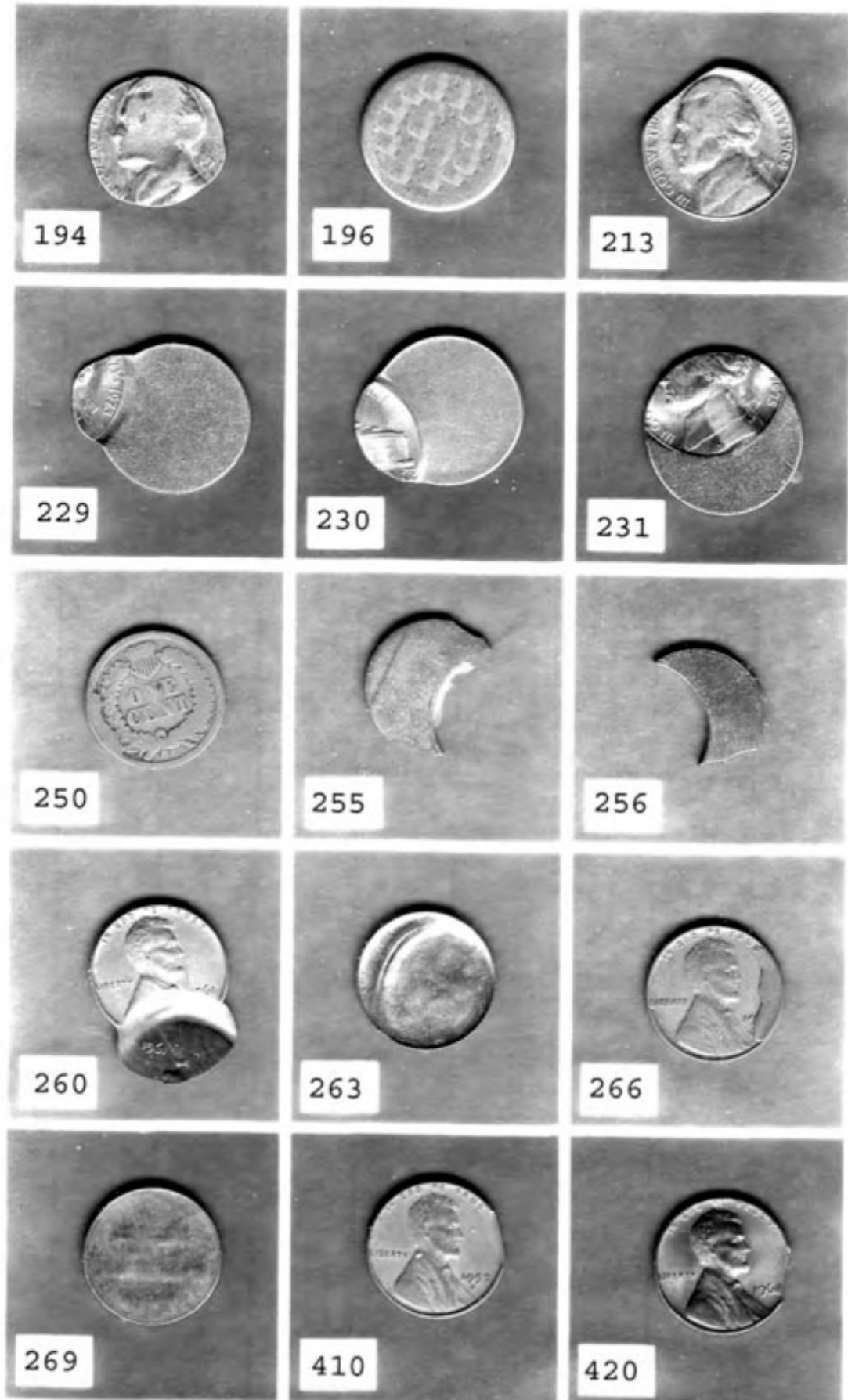
Jim's Coins Auction Catalog



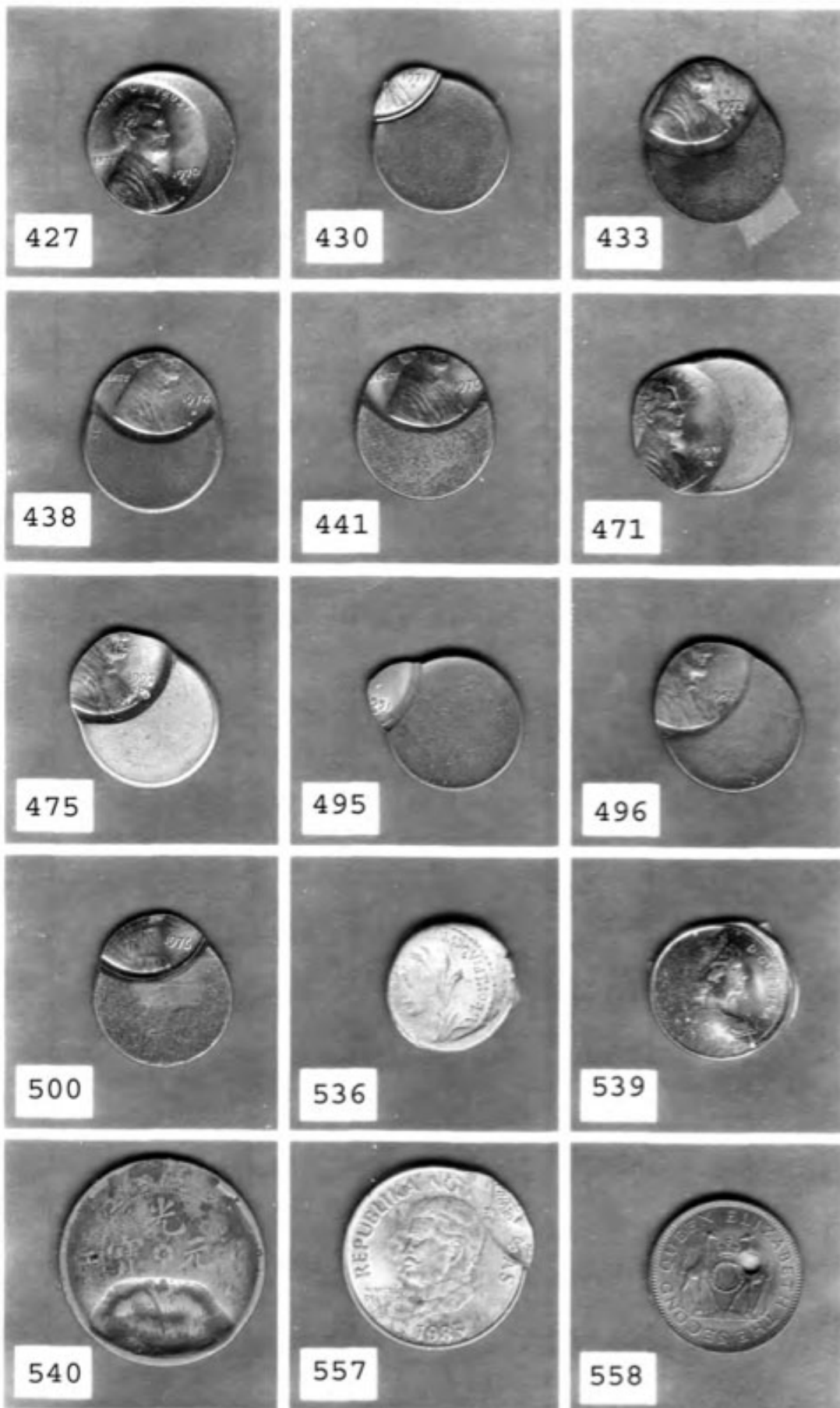
Jim's Coins Auction Catalog



Jim's Coins Auction Catalog



Jim's Coins Auction Catalog



Jim's Coins Auction Catalog

223	1945 P	NICK	LAMINATIONS OBVERSE	VF	MB	\$2.50	
224	1945 P	NICK	3% CURVED CLIP 8:00 + LAMINATION OUT 10:30	FN	MB	\$3.50	
225	1950 P	NICK	LAMINATION FLAP REVERSE AT 1:00	VF	MB	\$2.00	
226	1954 S	NICK	LAMINATION ACROSS BUILDING 10:00 TO 1:00	BU	MB	\$2.50	
227	1958 D	NICK	LAMINATION REVERSE 4:00 TO 10:30	FN	MB	\$0.50	
*	229	1973	NICK	80% OFF CENTER 9:00	BU	MB	\$38.00
*	230	1974	NICK	70% OFF CENTER 10:00	BU	MB	\$45.00
*	231	1975	NICK	40% OFF CENTER 12:00 MINOR COUNTER BURN	UNC	MB	\$35.00
	232	1975 D	NICK	55% OFF CENTER 10:30	BU	MB	\$45.00
	233	1977	NICK	40% OFF CENTER 12:00	BU	MB	\$28.00
	234	X991 P	NICK	75% OFF CENTER 11:00 DSBS	BU	MB	\$22.00
	235	N.D.	NICK	75% OFF CENTER 2:00	BU	MB	\$3.50
	236	N.D.	NICK	80% OFF CENTER 2:00	UNC	MB	\$3.00
	237	N.D.	NICK	80% OFF CENTER 7:30 DSBS	UNC	MB	\$3.50
	238	N.D.	NICK	40% OFF CENTER 2:30 NEAT STRETCHED LETTERING FROM 1960'S	BU	MB	\$22.00
	239	N.D.	NICK	80% OFF CENTER 1:30 MINT EDGE BUMP POSSIBLE PROOF PLANCHET	BU	MB	\$19.00
	240	ASST	NICK	LOT OF 3 COINS WITH DIE CRACKS IN 2x2'S	UNC	MB	\$0.50
	241	1866	NIK3c	LARGE ALIGATOR DIE BREAK ON FIRST PILLAR REVERSE	VG	MB	\$15.00
	242	1866	NIK3c	HEAVY LAMINATION 9:00 OBVERSE	AU	MB	\$29.00
	243	ASST	OTHER	20 ASST VARIETIES 6 CENTS, 7 NICKELS, 1 QUARTER 6 CENTS OFF CENTER 40%+	ASST	MB	\$15.00
	244	1881	NIK3c	RIM CLIP 8:30	EF	MB	\$35.00
	245	1797	CENT	DOUBLE STRUCK, 2ND 1797/179 + REVERSE AMER FIN OVER AMERICA		MB	\$449.00
	246	1858SL	CENT	MAJOR MISALIGNED REVERSE	VG+	MB	\$75.00
	247	1858LL	CENT	LARGE OBVERSE CUD FEC-1858-16-RET	AG+	MB	\$45.00
	248	1889	CENT	DOUBLED DIE REVERSE FS-01-1889-801(010.81)	VF	MB	\$20.00
	249	1862	CENT	OBVERSE RIM CUDS 11:00 TO 2:00	FIN	MB	\$19.00
*	250	1864L	CENT	CUD REVERSE 8:00 TO 10:00 IC-1864-7R	GD	MB	\$79.00
	251	1887	CENT	CUD REVERSE 9:00 TO 10:30 IC-1887-3RB	GD	MB	\$39.00
	252	1864L	CENT	ROTATED REVERSE 80 DEGREES CCW	AG	MB	\$22.00
	253	1907	CENT	5% CURVED CLIPS AT 4:00 & 10:00	VF	MB	\$45.00
	254	N.D.	CENT	COPPER TYPE 2 PLANCHET WITH 3% CURVED CLIP	UNC	MB	\$8.00
*	255	N.D.	CENT	TYPE 1 COPPER BLANK WITH 45+ CURVED CLIP + 5% C.CLIP 30.3 GRAINS	UNC	MB	\$45.00
*	256	N.D.	CENT	TYPE 1 COPPER BLANK WITH 40% CURVED CLIP + 2 OVERLAPPING SMALLER CLIPS	UNC	MB	\$45.00
	257	N.D.	CENT	TYPE 1 COPPER BLANK WITH 32% STRAIGHT CLIP	BU	MB	\$45.00
	258	N.D.	CENT	TYPE 2 ZINC PLANCHET	UNC	MB	\$0.50
	259	N.D.	CENT	TYPE 2 ZINC PLANCHET	UNC	MB	\$1.50
*	260	1961	CENT	DOUBLE STRUCK, 2ND 65% OFF CENTER 6:00 UNIFACE REVERSE 2 DATES V RARE DATE	UNC	MB	\$425.00
	261	N.D.	CENT	OBV STRUCK THRU MID STATE CAPPED DIE	UNC	MB	\$22.00
	262	1974 D	CENT	SLIGHT PARTIAL COLLAR DISTORTED OBVERSE STRUCK THRU LATE STAGE CAPPED DIE?	UNC	MB	\$15.00
*	263	N.D.	CENT	OBV BROCKAGE & COUNTER BROCKAGE BY CAPPED DIE WOWSER!!	UNC	MB	\$95.00
	264	1973 D	CENT	MISALIGNED OBVERSE DIE	AU	MB	\$1.00
	265	1997	CENT	VERY HIGH RIM FROM THE STRIKE NEAT	BU	MB	\$5.00
*	266	N.D.	CENT	WHEAT BACK, WITH LARGE CUD OBVERSE 2:00 TO 5:00 LC-ND-13A WHEAT	VF	MB	\$79.00
	267	1955	CENT	CRACKED SKULL	BU	MB	\$2.50
	268	1969 S	CENT	MACHINE DOUBLING	UNC	MB	\$2.50
*	269	1965	CENT	STRUCK THRU PLANCHET UNIFACE GHOST REV	BU	MB	\$45.00
	270	1970 S	CENT	STRUCK THRU LATE STAGE CAPPED DIE OBV	BU	MB	\$35.00

Jim's Coins Auction Catalog

271	1972 D	CENT	STRUCK WITH FILLED DIE OBVERSE	UNC	MB	\$0.50
272	1999	CENT	HIGH FLANGED PARTIAL COLLAR OBVERSE	UNC	MB	\$4.00
273	1944	CENT	TILTED PARTIAL COLLAR	BU	MB	\$8.00
274	1972 D	CENT	PARTIAL COLLAR	UNC	MB	\$2.00
275	1971	CENT	5% INDENT 12:30 BROADSTRUCK	BU	MB	\$9.50
276	1972	CENT	UNCENT BROADSTRIKE LOOKS 10% OFF CENTER	UNC	MB	\$8.00
277	1987	CENT	UNCENTERED BROADSTRIKE	UNC	MB	\$2.50
278	1987	CENT	UNCENT BROADSTRIKE LOOKS OFF CENTER	UNC	MB	\$2.50
279	1989	CENT	BROADSTRK WITH PART COLL VERY HIGH RIMS	UNC	MB	\$2.50
280	1990	CENT	UNCENTERED BROADSTRIKE	BU	MB	\$2.50
281	1999	CENT	UNCENTERED BROADSTRIKE	BU	MB	\$2.50
282	1919	CENT	DEEP & WIDE LAMINATION OBVERSE 12:00 6:00	FIN	MB	\$3.50
283	1921 S	CENT	LAMINATION HEAD TO SHOULDER	FIN	MB	\$2.00
284	1925	CENT	LAMINATION AT DATE	VG	MB	\$1.00
285	1940 D	CENT	LAMINATION STREAKS 5:00 TO 10:30 OBVERSE	VF	MB	\$0.75
286	1942 S	CENT	LAMINATION REVERSE 11:00 TO 12:00	VF	MB	\$0.50
287	1944 S	CENT	LAMINATION STREAK 2:00 TO 7:00	VG	MB	\$0.50
288	1948 S	CENT	LAMINATION ON HEAD OBVERSE	VF	MB	\$0.50
289	1950 D	CENT	LAMINATION 5:00 TO 9:30 OBVERSE	FIN	MB	\$0.50
290	1966	CENT	LAMINATION BUBBLES OBVERSE 8:30 TO 10:00	BU	MB	\$2.00
291	1969 D	CENT	LAMINATIONS AROUND RIM	UNC	MB	\$1.00
292	1971 D	CENT	LAMINATION FLAKE REVERSE	AU	MB	\$4.50
293	1973 D	CENT	LAMINATION ON COAT	BU	MB	\$0.50
294	1977	CENT	SMALL LAMINATION FLAKE 7:30 OBVERSE SPOTS	UNC	MB	\$0.25
295	1983	CENT	BUBBLED SURFACES BRASS COLORED PLATING	UNC	MB	\$4.00
296	1968 D	CENT	PLATING LAMINATED OFF IN FLAKES + UNPLATED 20% AROUND RIM REVERSE	UNC	MB	\$18.00
297	2002 S	CENT	HANGING COPPER ON RIM	PRF	MB	\$9.00
298	1952D/S	CENT	OVER MINT MARK #1 FS 01-1952 D-501	F/VF	MB	\$15.00
299	1955 D	CENT	DOUBLED DIE OBV 1-0-IV-VIII FS-01-1955D-101	BU	MB	\$60.00
300	1956 D	CENT	RPM #8 EDS FS-01-1956D-501	FIN	MB	\$20.00
301	1960 D	CENT	RPM #100 STAGE D DDO--1-O-III LARGE /SMALL SM SPOT OBV	BU	MB	\$95.00
302	1944 D	CENT	RPM #1 WDDO-022	BU	MB	\$6.50
303	1952 S	CENT	RPM #7 DIE CHIP LEFT WHEAT LINES, DIE GOUGE BEHIND BUST TO RIM	BU	MB	\$3.50
304	1954 D	CENT	RPM #2	BU	MB	\$4.50
305	1955 D	CENT	RPM #1	BU	MB	\$3.50
306	1955 D	CENT	RPM #3	BU	MB	\$4.00
307	1955 D	CENT	RPM #3	BU	MB	\$16.00
308	1955 D	CENT	RPM #4 SW	BU	MB	\$25.00
309	1955 S	CENT	RPM #1	BU	MB	\$2.00
310	1955 S	CENT	RPM #2 STAGE E	BU	MB	\$4.50
311	1955 S	CENT	RPM #2	BU	MB	\$4.50
312	1955 S	CENT	RPM #2 STAGE E.5	BU	MB	\$4.50
313	1955 S	CENT	RPM #2 STAGE F	BU	MB	\$4.50
314	1955 S	CENT	RPM #2 STAGE G	BU	MB	\$4.50
315	1955 S	CENT	RPM #2 STAGE H	BU	MB	\$4.50
316	1955 S	CENT	RPM #2 STAGE I	BU	MB	\$4.50
317	1955 S	CENT	RPM #2 STAGE J	BU	MB	\$4.50
318	1955 S	CENT	RPM #2 STAGE K/L	BU	MB	\$4.50
319	1955 S	CENT	RPM #3	BU	MB	\$2.00
320	1955 S	CENT	RPM 005	BU	MB	\$4.00
321	1955 S	CENT	RPM #4 STAGE A.5	BU	MB	\$4.50
322	1955 S	CENT	RPM #4 STAGE B	BU	MB	\$4.50
323	1955 S	CENT	RPM #4 STAGE C/D	BU	MB	\$4.50
324	1955 S	CENT	RPM #4 STAHE E.5	BU	MB	\$4.50

Jim's Coins Auction Catalog

325	1955 S	CENT	RPM #4	STAGE F	BU	MB	\$4.50
326	1955 S	CENT	RPM #4	STAGE F.5	BU	MB	\$4.50
327	1955 S	CENT	RPM #5	STAGE G	BU	MB	\$4.50
328	1955 S	CENT	RPM #4		BU	MB	\$4.00
329	1956 D	CENT	RPM #5		BU	MB	\$4.00
330	1957 D	CENT	RPM #17		BU	MB	\$3.00
331	1958 D	CENT	RPM #1		BU	MB	\$5.00
332	1958 D	CENT	RPM #2		BU	MB	\$4.00
333	1958 D	CENT	RPM #7		BU	MB	\$5.00
334	1958 D	CENT	RPM #18		BU	MB	\$4.00
335	1959 D	CENT	RPM #7		BU	MB	\$3.50
336	1959 D	CENT	RPM #6		BU	MB	\$3.00
337	1959 D	CENT	RPM #8		BU	MB	\$5.75
338	1959 D	CENT	RPM #9		BU	MB	\$3.00
339	1959 D	CENT	RPM #10		BU	MB	\$3.00
340	1959 D	CENT	RPM #13		BU	MB	\$3.50
341	1960 D	CENT	RPM #2		BU	MB	\$2.75
342	1960 D	CENT	RPM #5		BU	MB	\$2.75
343	1960 D	CENT	RPM #13		BU	MB	\$6.00
344	1960 D	CENT	RPM #15		BU	MB	\$3.25
345	1960 D	CENT	RPM #16		BU	MB	\$6.00
346	1960 D	CENT	RPM #17		BU	MB	\$6.00
347	1960 D	CENT	RPM #19		BU	MB	\$5.75
348	1960 D	CENT	RPM #20		BU	MB	\$2.75
349	1960 D	CENT	RPM #21		BU	MB	\$5.00
350	1960 D	CENT	RPM #23		BU	MB	\$2.75
351	1960 D	CENT	RPM #24		BU	MB	\$2.75
352	1960 D	CENT	RPM #29		BU	MB	\$2.75
353	1960 D	CENT	RPM #35	STAGE A	BU	MB	\$3.00
354	1960 D	CENT	RPM #42		BU	MB	\$2.50
355	1960 D	CENT	RPM #47		BU	MB	\$2.50
356	1960 D	CENT	RPM #49		BU	MB	\$3.00
357	1960 D	CENT	RPM #54		BU	MB	\$2.75
358	1960 D	CENT	RPM #71		BU	MB	\$2.50
359	1960 D	CENT	RPM #102		BU	MB	\$2.75
360	1960 D	CENT	RPM #110		BU	MB	\$3.00
361	1961 D	CENT	RPM #2		BU	MB	\$2.50
362	1961 D	CENT	RPM #4	STAGE E	BU	MB	\$2.50
363	1961 D	CENT	RPM #11		BU	MB	\$2.50
364	1961 D	CENT	RPM #16		BU	MB	\$2.50
365	1961 D	CENT	RPM #18		BU	MB	\$2.50
366	1961 D	CENT	RPM #12		BU	MB	\$2.50
367	1961 D	CENT	RPM #21		BU	MB	\$3.50
368	1961 D	CENT	RPM #22		BU	MB	\$2.50
369	1961 D	CENT	RPM ##23		BU	MB	\$2.00
370	1961 D	CENT	RPM #27		BU	MB	\$2.50
371	1961 D	CENT	RPM #28		BU	MB	\$3.00
372	1961 D	CENT	RPM #34		BU	MB	\$2.50
373	1961 D	CENT	RPM #39		BU	MB	\$2.50
374	1961 D	CENT	RPM #47		BU	MB	\$3.00
375	1961 D	CENT	RPM #64		BU	MB	\$2.50
376	1961 D	CENT	RPM D OVER D		BU	MB	\$1.50
377	1962 D	CENT	RPM #2		BU	MB	\$2.25
378	1962 D	CENT	RPM #5		BU	MB	\$2.25
379	1962 D	CENT	RPM #6		BU	MB	\$2.25
380	1962 D	CENT	RPM #8		BU	MB	\$2.25
381	1962 D	CENT	RPM #12		BU	MB	\$2.25

Jim's Coins Auction Catalog

382	1962 D	CENT	RPM #15	BU	MB	\$2.25
383	1963 D	CENT	RPM #5	BU	MB	\$2.50
384	1963 D	CENT	RPM #6	BU	MB	\$2.50
385	1963 D	CENT	RPM #9	BU	MB	\$2.50
386	1963 D	CENT	RPM #16	BU	MB	\$2.50
387	1964	CENT	DOUBLED DIE REV FS-803	FIN	MB	\$4.00
388	1964 D	CENT	RPM #2	BU	MB	\$3.25
389	1964 D	CENT	RPM #7	BU	MB	\$2.50
390	1964 D	CENT	RPM #8	BU	MB	\$2.75
391	1964 D	CENT	RPM #12	BU	MB	\$2.25
392	1964 D	CENT	RPM #16	BU	MB	\$2.75
393	1972	CENT	DOUBLED DIE OBVERSE FS-109 (033.59)	FIN	MB	\$0.50
394	1972	CENT	DOUBLED DIE OBVERSE FS-109 (033.59)	VF	MB	\$1.00
395	1982	CENT	SM DATE ZINC DOUBLED DIE REV FS01-1982-1801	FIN	MB	\$2.50
396	1997	CENT	DOUBLE EAR FS-101-(043)	BU	MB	\$99.00
397	2009	CENT	ROLL 50 COINS DOUBLED DIE REVERSE -004	BU	MB	\$125.00
398	1920	CENT	RIM CLIP 6:00	GD	MB	\$1.50
399	1925	CENT	RIM CLIP 8:00	VG	MB	\$1.50
400	1931 S	CENT	2% RAGGED CLIP 1:00 RARER DATE	EF	MB	\$155.00
401	1940	CENT	3% CURVED CLIP 7:00	FIN	MB	\$2.00
402	1941	CENT	RIM CLIPS AT 4:00 & 7:00	VF	MB	\$2.00
403	1941	CENT	RIM CLIP 10:30	EF	MB	\$1.50
404	1942	CENT	RIM CLIP 3:00	VF	MB	\$0.75
405	1944	CENT	RIM CLIP 2:00 COUNTER SKID	EF	MB	\$0.75
406	1944 S	CENT	RIM CLIP 1:00 R/B	UNC	MB	\$6.00
407	1945	CENT	2% CURVED CLIP 10:30	VF	MB	\$1.50
408	1946	CENT	3% CURVED CLIP 12:30	EF	MB	\$1.50
409	1951	CENT	2% CURVED CLIP 4:00	VF	MB	\$1.50
* 410	1957 D	CENT	5% STRAIGHT CLIP 2:00	AU	MB	\$1.50
411	1958	CENT	RIM CLIP 8:00	BU	MB	\$2.50
412	1959	CENT	2% CURVED CLIP 8:00	BU	MB	\$2.50
413	1960	CENT	LGE DATE, 5% CURVED CLIP 1:00	BU	MB	\$2.50
414	1960	CENT	RIM CLIP 5:00	AU	MB	\$1.50
415	1961 D	CENT	5% CLIP 6:30	FIN	MB	\$0.75
416	1964	CENT	3% CURVED CLIP 10:00	BU	MB	\$2.00
417	1964 D	CENT	5% CURVED CLIP 10:00	AU	MB	\$2.00
418	1964 D	CENT	RIM CLIP 4:00 SMALL SPOT ABOVE DATE	UNC	MB	\$1.00
419	1965	CENT	5% CURVED CLIP 3:00	BU	MB	\$2.00
* 420	1968	CENT	5% CURVED CLIP 3:00	BU	MB	\$2.00
421	1968 S	CENT	2% CURVED CLIP 5:00	UNC	MB	\$3.50
422	1970	CENT	RIM CLIP 10:30	UNC	MB	\$2.00
423	1983	CENT	RIM CLIP 11:00	UNC	MB	\$3.50
424	1983	CENT	5% curved clip 2:00 + 2% at 9:00 few spots	UNC	MB	\$4.50
425	1970	CENT	15% OFF CENTER 1:00 NOTE: THE FOLLOWING LOTS TO 494 ARE A NICE COMPLETE DATE & MM SET 1970 P TO 2001 D	BU	MB	\$15.00
426	1970 D	CENT	45% OFF CENTER 7:30	BU	MB	\$15.00
* 427	1970 S	CENT	20% OFF CENTER 8:30 DON'T MISS IF YOU NEED A DATE OR MINT MARK	BU	MB	\$75.00
428	1971	CENT	25% OFF CENTER 1:00	BU	MB	\$15.00
429	1971 D	CENT	50% OFF CENTER 8:00	BU	MB	\$15.00
* 430	1971 S	CENT	80% OFF CENTER 10:00 FULL DATE & MM	BU	MB	\$75.00
431	1972	CENT	20% OFF CENTER 2:00	BU	MB	\$10.00
432	1972 D	CENT	50% OFF CENTER 9:00	BU	MB	\$15.00
* 433	1972 S	CENT	50% OFF CENTER 11:00	BU	MB	\$125.00
434	1973	CENT	45% OFF CENTER 9:00	BU	MB	\$15.00
435	1973 D	CENT	35% OFF CENTER 8:00	BU	MB	\$15.00

Jim's Coins Auction Catalog

436	1974	CENT	50% OFF CENTER	11:30	UNC	MB	\$15.00	
437	1974 D	CENT	55% OFF CENTER	8:30	BU	MB	\$15.00	
*	438	1974 D	CENT	50% OFF CENTER	11:00	BU	MB	\$15.00
439	1975	CENT	70% OFF CENTER	9:00 UNIFACE	UNC	MB	\$15.00	
440	1975 D	CENT	50% OFF CENTER	9:00	BU	MB	\$15.00	
*	441	1976	CENT	50% OFF CENTER	12:00	BU	MB	\$15.00
442	1976 D	CENT	75% OFF CENTER	10:00	BU	MB	\$15.00	
443	1977	CENT	60% OFF CENTER	11:00	BU	MB	\$15.00	
444	1977 D	CENT	20% OFF CENTER	5:00	UNC	MB	\$15.00	
445	1978	CENT	50% OFF CENTER	8:00	UNC	MB	\$15.00	
446	1978 D	CENT	55% OFF CENTER	8:00 R/B	UNC	MB	\$15.00	
447	1979	CENT	50% OFF CENTER	7:30	BU	MB	\$15.00	
448	1979 D	CENT	50% OFF CENTER	10:00	BU	MB	\$15.00	
449	1980 P	CENT	50% OFF CENTER	9:00	BU	MB	\$15.00	
450	1980 P	CENT	60% OFF CENTER	9:00	UNC	MB	\$15.00	
451	1980 D	CENT	45% OFF CENTER	8:00	BU	MB	\$15.00	
452	1981	CENT	45% OFF CENTER	8:00	BU	MB	\$15.00	
453	1981 D	CENT	65% OFF CENTER	9:00	BU	MB	\$15.00	
454	1982	CENT	60% OFF CENTER	8:00	BU	MB	\$10.00	
455	1982 D	CENT	70% OFF CENTER	10:00	BU	MB	\$15.00	
456	1983	CENT	35% OFF CENTER	8:30	BU	MB	\$5.00	
457	1983 D	CENT	50% OFF CENTER	9:30	BU	MB	\$5.00	
458	1984	CENT	35% OFF CENTER	8:00	BU	MB	\$5.00	
459	1984 D	CENT	50% OFF CENTER	8:30	BU	MB	\$5.00	
460	1985	CENT	40% OFF CENTER	8:00	BU	MB	\$5.00	
461	1985 D	CENT	50% OFF CENTER	8:00	BU	MB	\$5.00	
462	1986	CENT	40% OFF CENTER	8:00	BU	MB	\$5.00	
463	1986 D	CENT	50% OFF CENTER	9:30	BU	MB	\$5.00	
464	1987	CENT	50% OFF CENTER	8:00	BU	MB	\$5.00	
465	1987 D	CENT	60% OFF CENTER	9:00 UNIFACE	BU	MB	\$5.00	
466	1988	CENT	35% OFF CENTER	11:00	BU	MB	\$5.00	
467	1988 D	CENT	50% OFF CENTER	11:00	BU	MB	\$5.00	
468	1989	CENT	50% OFF CENTER	9:00	BU	MB	\$5.00	
469	1989 D	CENT	50% OFF CENTER	9:00	BU	MB	\$5.00	
470	1990	CENT	25% OFF CENTER	9:00	BU	MB	\$5.00	
*	471	1990 D	CENT	40% OFF CENTER	9:00	BU	MB	\$10.00
472	1991	CENT	35% OFF CENTER	10:00	BU	MB	\$5.00	
473	1991 D	CENT	55% OFF CENTER	10:00	BU	MB	\$10.00	
474	1992	CENT	50% OFF CENTER	8:00	BU	MB	\$5.00	
*	475	1992 D	CENT	55% OFF CENTER	10:00	BU	MB	\$10.00
476	1993	CENT	25% OFF CENTER	8:00	BU	MB	\$5.00	
477	1993 D	CENT	50% OFF CENTER	9:00	BU	MB	\$10.00	
478	1994	CENT	40% OFF CENTER	8:00	BU	MB	\$5.00	
479	1994 D	CENT	55% OFF CENTER	9:00	BU	MB	\$10.00	
480	1995	CENT	50% OFF CENTER	9:00	BU	MB	\$5.00	
481	1995 D	CENT	65% OFF CENTER	9:00	BU	MB	\$10.00	
482	1996	CENT	40% OFF CENTER	9:00	BU	MB	\$5.00	
483	1996 D	CENT	35% OFF CENTER	8:00	BU	MB	\$10.00	
484	1997	CENT	50% OFF CENTER	8:00	BU	MB	\$5.00	
485	1997 D	CENT	40% OFF CENTER	8:00	BU	MB	\$10.00	
486	1998	CENT	20% OFF CENTER	7:00	BU	MB	\$5.00	
487	1998 D	CENT	30% OFF CENTER	9:00	BU	MB	\$10.00	
488	1999	CENT	35% OFF CENTER	8:00	BU	MB	\$5.00	
489	1999 D	CENT	45% OFF CENTER	8:30	BU	MB	\$10.00	
490	2000	CENT	45% OFF CENTER	11:00	BU	MB	\$5.00	
491	2000	CENT	30% OFF CENTER	8:00	BU	MB	\$5.00	
492	2000 D	CENT	20% OFF CENTER	1:00	BU	MB	\$5.00	

Jim's Coins Auction Catalog

493	2001	CENT	20% OFF CENTER 7:30	BU	MB	\$5.00
494	2001 D	CENT	15% OFF CENTER 1:00 THE END OF THIS COLLECTION MORE OFF CENTERS FOLLOWS	BU	MB	\$10.00
*	495 X951 D	CENT	85% OFF CENTER 9:00 DSBS	UNC	MB	\$95.00
*	496 1952 D	CENT	50% OFF CENTER 10:30 BROWN	UNC	MB	\$98.00
	497 1968	CENT	5% OFF CENTER 2:00 BROWN	UNC	MB	\$35.00
	498 1971 X	CENT	60% OFF CENTER 8:00 GLOSSY BROWN	BU	MB	\$18.00
	499 1972 D	CENT	75% OFF CENTER 10:30 RED/BRN	UNC	MB	\$24.00
*	500 1976	CENT	60% OFF CENTER 10:30 RED	BU	MB	\$35.00
	501 1981 X	CENT	45% OFF CENTER 8:00	BU	MB	\$14.00
	502 198(5)	CENT	45% OFF CENTER 7:00	UNC	MB	\$9.00
	503 1990	CENT	30% OFF CENTER 1:30	UNC	MB	\$8.00
	504 1993 D	CENT	65% OFF CENTER 9:00	BU	MB	\$27.00
	505 1996 D	CENT	40% OFF CENTER 1:00	BU	MB	\$28.00
	506 N.D.	CENT	ZINC, 60% OFF CENTER 3:30 WITH STRANGE ATTACHED FLAP REVERSE RARE	UNC	MB	\$25.00
	507 198x D	CENT	40% OFF CENTER 1:00	UNC	MB	\$3.00
	508 199X	CENT	25% OFF CENTER 7:00	BU	MB	\$3.00
	509 19XX	CENT	ZINC, 50% OFF CENTER 1:00	BU	MB	\$3.00
	510 N.D.	CENT	ZINC, 50% OFF CENTER 2:00	UNC	MB	\$3.00
	511 198X	CENT	ZINC, 40% OFF CENTER 1:00	BU	MB	\$3.00
	512 198X	CENT	ZINC, 35% OFF CENTER 1:00	BU	MB	\$3.00
	513 19XX	CENT	ZINC, 40% OFF CENTER 1:00	BU	MB	\$3.00
	514 N.D.	CENT	ZINC, 35% OFF CENTER 4:00	BU	MB	\$3.00
	515 1970 S	CENT	LOT 8 COINS STRUCK THRU LATE STAGE CAPPED DIE VARIOUS STAGES NEAT!	BU	MB	\$280.00
	516 1995	CENT	LOT 10 COINS, VARIOUS STAGES OF FILLED DIES	BU	MB	\$3.00
	517 1955	CENT	ROLL 50 COINS, PRE CUD DIE CRACKS BASE OF BUST	BU	MB	\$49.00
	518 1955	CENT	ROLL 50 COINS, SHIFTED 5 POORMANS DOUBLED DIE	BU	MB	\$65.00
	519 1955	CENT	ROLL 50 COINS, WITH CRACKED SKULL DIE CRACKS	BU	MB	\$49.00
	520 1960 D	CENT	ROLL 50 COINS, SMALL DATE WITH DIE CHIPS IN LETTERS & DATE	ASST	MB	\$10.00
	521 ASST	CENT	ROLL 21 COINS, DIE CRACKS OBVERSE ON HEAD	ASST	MB	\$4.00
	522 ASST	CENT	ROLL 29 COINS, ASSORTED DIE CHIPS	ASST	MB	\$5.75
	523 1960 D	CENT	ROLL 50 COINS, SMALL DATE WITH DIE CHIPS IN LETTERS & DATE	ASST	MB	\$10.00
	524 ASST	CENT	8 MEMORIALS IN 2x2'S WITH DIE CHIPS	ASST	MB	\$1.50
	525 ASST	CENT	8 MEMORIALS IN 2x2'S WITH STRUCK THRUS	ASST	MB	\$1.50
	526 ASST	CENT	14 MEMORIALS IN 2x2'S MINOR MISALIGNED DIES	ASST	MB	\$3.00
	527 ASST	CENT	18 MEMORIALS IN 2x2'S WITH MINOR RIM CUDS & CHIPS	ASST	MB	\$3.50
	528 ASST	CENT	19 MEMORIALS IN 2x2'S WITH MINOR ERRORS, BIE, CHIPS, MAD	ASST	MB	\$3.50
	529 ASST	CENT	19 MEM 1C IN 2x2'S DIE CRACKS & MISSING LETT.	ASST	MB	\$3.75
	530 ASST	CENT	20 MEMORIALS IN 2x2'S WTH MONOR ERRORS	ASST	MB	\$4.00
	531 1943	OTHER	AUSTRALIA PENNY, LAMINATION OBV 1:00 TO 7:00	AU	MB	\$3.50
*	532 1983	OTHER	BERMUDA EXPERIMENTAL TRIAL BLANK PLANCHET COMES WITH STRUCK COIN THAT WAS LATER MADE	BU	MB	\$55.00
	533 1829 R	OTHER	BRAZIL 20r, 5% OFF CENTER 11:00	VF	MB	\$35.00
	534 1972	OTHER	BRAZIL 20 CRUZEIROS PROOF! WITH STRUCK IN RETAINED STAPLE 6:00 TO EDGE	PRF	MB	\$65.00
	535 N.D.	OTHER	BYSANITINE ANCIENT, FLIPOVER DOUBLE STRUCK	VG	MB	\$85.00
*	536 55 BC	OTHER	ROMAN REPUBLIC, OBV: VEILED HEAD OF CONCORD, REV: MIRROR BROCKAGE WANT AN	FIN	MB	\$85.00

Jim's Coins Auction Catalog

EARLY ERROR??					
537	1951	OTHER CANADA CENT, LAMINATION 10:00 ACROSS HEAD	VF	MB	\$0.50
538	1953	OTHER CANADA DIME, RIM CLIP 4:30	EF	MB	\$3.00
*	539	N.D. OTHER CANADA DIME, UNIFACE REV WITH 40% INDENT, OBV HALF STRUCK & HALF UNIFACE, WHATSIT??	BU	MB	\$230.00
*	540	(1905) OTHER KIANGSY PROV, CHINA 10 CASH, 20% OBV BROCKAGED BY SMALLER COIN + 3 SMALL CUDS	VG	MB	\$45.00
	541	N.D. OTHER CHINA 20 CASH, WITH 1/2 INCH LONG BLOW HOLE + EDGE CRACKS	FIN	MB	\$25.00
	542	N.D. OTHER CHINA 10 CASH, WITH MAJOR OBV & REV CUDS	FIN	MB	\$55.00
	543	1917 OTHER CHINA 20 CASH, 70% OFF CENTER + LARGE ROLLED IN SLAG ON OBV & SMALL REV	VG	MB	\$45.00
	544	1917 OTHER CHINA 20 CASH, BROADSTRUCK HUPOO PROV.	EF	MB	\$24.00
	545	N.D. OTHER REPUBLIC CHINA 10 CASH, CRACK THRU PLANCHET 2:00 TO 8:00 ALMOST IN 2 PIECES	FIN	MB	\$17.00
	546	N.D. OTHER CNINA 20 CASH?, TYPE 2 PLANCHET	EF	MB	\$12.00
	547	1947 OTHER COSTA RICA 10 CENT, FULL MIRROR BROCKAGE	EF	MB	\$95.00
	548	1966 OTHER COLUMBIA 10c, HEAVY DIE CRACKS THRU DATE	VF	MB	\$1.50
	549	1918 OTHER FRENCH NOTEGELD (GAME COUNTER) 20c, 3% CURVED CLIP 1:00 + CUDS 6:00 AREA	BU	MB	\$22.00
	550	(1650) OTHER GERMAN STATE GROSCHN, FULL MIRROR BROCKAGE	EF	MB	\$125.00
	551	(1945) OTHER JAPAN SEN, LAMINATION 2:00 TO CENTER OBV & REVERSSE	FIN	MB	\$2.50
	552	1902 OTHER MALDIVES 4 LARIAT, DOUBLE STRUCK ON CENTER + SMALL RIM CUD	EF	MB	\$12.50
	553	1966 OTHER SPAIN UNA PESETA, DOUBLE RIM CLIPS AT 12:30 & 3:00	EF	MB	\$3.00
	554	1967 OTHER NEW ZEALAND CENT, 5% CURVED CLIP 8:00	AU	MB	\$2.50
	555	1971 OTHER PAKISTAN PAISA, 2 LARGE DIE CRACKS OBVERSE	UNC	MB	\$2.00
	556	1937 OTHER PHILIPPINES, RETAINED CUD 12:00 OBV NICE	UNC	MB	\$12.00
*	557	1985 OTHER PHILIPPINES, DOUBLE DENOMINATION KM241.1, 50c OVERSTRUCK 85% BY EARLIER TYPE KM 200 LOOK ALIKA TOKEN--NEAT!	UNC	MB	\$125.00
*	558	1964 OTHER RHODISIA & NYASALAND, 1/2c, CENTER HOLE PUNCHED WAY OFF CENTER	UNC	MB	\$42.00
	559	N.D. OTHER RUSSIA 1 KOPECK, 50% OFF CENTER REVERSE BROCKAGE	VF	MB	\$55.00
	560	1796 OTHER "COPY" U.S. DOLLAR, DOUBLE STRUCK, 2ND 5% OFF CENTER 6:00	BU	MB	\$29.00
	561	N.D. OTHER 5c SIZE GAMING TOKEN OVERSTRUCK ON STRUCK TOKEN	VF	MB	\$1.50



MINTERRORNEWS GLOSSARY



What are brockages?

A brockage error can only occur when there are two coins involved. One of the coins involved will always be a struck coin which has not ejected properly. That struck coin will find its way back between the dies and will be struck next to a blank planchet which was fed into the collar. The image of that first struck coin will be impressed into that side of the blank planchet. The result will be a second coin which has images of the first coin impressed into it. Those images will be pressed into the coin and the image will be in reverse. This incuse sunken image is known as a brockage.

2012 Coin Shows



Visit Mike Byers at the following shows:

January 5 - 8	FUN Orlando, Florida
February 2 - 4	Long Beach Coin & Collectibles Expo Long Beach, California Table #1039 & #1041
February 29 - March 3	PCGS Members Only Show Las Vegas, Nevada
March 22 - 25	Whitman Coin & Collectibles Expo Baltimore, Maryland
April 4 - 7	PCGS Members Only Show Las Vegas, Nevada
April 18 - 21	PNG / Central States Schaumburg, Illinois
May 10 - 12	ANA National Money Show Denver, Colorado
May 31 - June 2	Long Beach Coin & Collectibles Expo Long Beach, California Table #1039 & #1041
June 28 - 30	Whitman Coin & Collectible Expo Baltimore, Maryland
July 8 - 10	FUN Orlando, Florida
July 18 - 21	PCGS Members Only Show Las Vegas, Nevada
August 7 - 12	PNG Day / ANA Philadelphia, Pennsylvania
September 6 - 8	Long Beach Coin & Collectibles Expo Long Beach, California Table #1039 & #1041
September 19 - 22	Whitman Philadelphia Expo Philadelphia, Pennsylvania
September 26 - 29	PCGS Members Only Show Las Vegas, Nevada
October 18 - 20	ANA National Money Show Dallas, Texas
November 15 - 17	Baltimore Expo Baltimore, Maryland
November 29 - December 1	Money Show of the Southwest Houston, Texas
December 12 - 15	PCGS Members Only Show

Fred Weinberg & Co.

Dealer in Major Mint Error Coins & Currency



fredweinberg.com



BUYING MAJOR ERROR COINS & CURRENCY

If you have a single major mint error coin, either a recent issue or an older type coin, or 1,000 Off-Center Cents, please contact us. We stock over 60,000 Major Mint Error Coins and constantly need to purchase Major Error Coins for our clientele (please note that we do not deal in or buy Die Varieties, Damaged Coins, Doubled Dies, Filled Dies, or Die Cracks).

We do buy Major Mint Errors - such as Off-Center, Off-Metals, Double Strikes, Clad Layers missing, Die Caps, Double Denomination, etc.

Because of the many differences in each Error Coin we request that you send scans of your coin(s) to us for our examination and firm offer.

Postal Correspondence:

Telephone/Fax:

16311 Ventura Blvd.

Phone: (818) 986-3733

Suite #1298

Toll-free: (800) 338-6533

Encino, California 91436

Fax: (818) 986-2153

e-mail: fred@fredweinberg.com

fredweinberg.com

BYERS NUMISMATIC CORP

MIKEBYERS.COM



U.S. GOLD COINS • PATTERNS • RARITIES

RARE U.S. GOLD

- CERTIFIED BY PCGS OR NGC
- PRE-1840 GOLD COINS IN ALL DENOMINATIONS
- PROOF, MINT STATE & SPECIMEN
- ALL GRADES FROM MS 64 TO MS 68
- COINS PRICED FROM \$50,000 TO \$1,000,000

U.S. PATTERNS & DIE TRIALS

- CERTIFIED BY PCGS OR NGC
- STRUCK IN GOLD OR OFF-METALS OF GOLD DENOMINATIONS
- MOST JUDD #'S THAT ARE R-7, R-8 OR UNIQUE
- ALL GRADES FROM PROOF 64 TO PROOF 68
- COINS PRICED FROM \$50,000 TO \$1,000,000

U.S. MINT ERRORS

- CERTIFIED BY PCGS OR NGC
- GOLD & RARE SILVER TYPE ERRORS
- MINT STATE & PROOF 62 TO 68
- EARLY TYPE (Pre-1950) FROM \$25,000 TO \$500,000

MIKE BYERS

P.O. Box 5090, San Clemente, CA USA 92674

Office: 949-276-7072 • Fax: 949-276-7073

1001 Avenida Pico #C 612, San Clemente, CA 92673

E-Mail: mike@mikebyers.com • Web Design: sam@mikebyers.com

Mike Byers, Professional Numismatist since 1978

Byers Numismatic Corp. A California Corporation Since 1980

Mike Byers is the Publisher & Editor of Mint Error News Magazine

