

MINT *ERROR* NEWS MAGAZINE

Bringing the latest mint error news to the collector.



minterrornews.com

Unique NGC Set of Paraguay Overstrikes



Excited About Mint Errors?
Join Error World Club
errorworldclub.org



Issue 11 • Fall 2005
A Mike Byers Publication



Al's Coins

Dealer in Mint Errors
and Currency Errors

alscoins.com



Specializing in Mint Errors and Currency Errors for 25 years. Visit my website to see a diverse group of type, modern mint and major currency errors. We also handle regular U.S. and World coins.



I'm a member of CONECA and the American Numismatic Association. I deal with major Mint Error Dealers and have an excellent standing with eBay. Check out my show schedule to see which major shows I will be attending. I solicit want lists and will locate the Mint Errors of your dreams.

Al's Coins

P.O. Box 147

National City, CA 91951-0147

Phone: (619) 442-3728

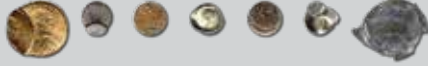
Fax: (619) 442-3693

e-mail: alscoins@aol.com



MINT ERROR NEWS MAGAZINE

Bringing the latest mint error news to the collector.



Issue 11 • Fall 2005

Publisher & Editor
Mike Byers

Design & Layout

Sam Rhazi

Contributing Editors

Tim Bullard

Allan Levy

Contributing Writers

Heritage Galleries & Auctioneers

Bob McLaughlin

Saul Teichman

Advertising

The ad space is sold out. Please e-mail
editor@minterrornews.com to be added
to the waiting list.

Subscriptions

We are not offering a paid subscription at this time. Issues of Mint Error News Magazine are mailed to our regular customers and coin dealers that we are associated with. Issues can be downloaded for free at minterrornews.com

Mint Error News is the official publication of minterrornews.com. All content Copyright 2005 *Mint Error News*. P.O. Box 5090, San Clemente, CA 92674. All rights reserved. No part of this magazine may be reproduced in any form without the expressed written permission of the publisher. Opinions expressed in this publication do not necessarily represent the viewpoints of *Mint Error News*. This publication is distributed with the understanding that the information presented herein is from various sources for which there can be no warranty or responsibility by the publisher as to accuracy, price or completeness. *Mint Error News* accepts unsolicited manuscripts, artwork, and photographs for publication. Direct editorial submissions to editor@minterrornews.com or P.O. Box 5090, San Clemente, CA 92674. All unsolicited material will not be returned.

PRINTED IN THE U.S.A.

Mint Error News Magazine

Issue 11 • Fall 2005

- Table of Contents -

Mike Byers' Welcome	4
Off-Center Errors	5
Off-Metal Errors	8
Clad Layer Split Off Errors	11
Double Struck 1800 \$10 Eagle in Upcoming Heritage Auction	13
Unique NGC Set of Paraguay Overstrikes	14
1877 Seated Quarter Die Trial Adjustment Strike	23
AD 582-602 Byzantine Gold Justin II Full Brockage	24
Lincoln Cent Struck on Bow-Tie Dime Scrap	25
1875 CA Gold Fractional 25¢ Uniface Reverse	27
1873 Octagonal 25¢ BG-793 CA Gold Fractional	28
1865 \$1 Indian Gold Proof Triple Struck Reverse	31
Mint Error News Price Guide	35
Exclusive Discounts	53
A Partial Brockage, Double Struck, Partial Collar Bust Dime	57
Canadian Mint Error	59
1923-S Peace Dollar Die Trial Struck 5% Off-Center	60
U.S. Coins - Weights & Specifications	61
1891 \$5 Triple Struck Proof Offered in Heritage Sale	63
Ike Dollar Struck on a Dime Planchet	65
Mint Error News Museum	79
Frequently Asked Questions	83

MINTERRORNEWSTM MAGAZINE

Bringing the latest mint error news to the collector.



Mike Byers, Publisher & Editor Welcomes You!

Welcome to Mint Error News Magazine, bringing the latest mint error news and information to the collector. This is our third year bringing you both a print magazine and an on-line PDF magazine filled with articles, features and discoveries of major mint errors (striking errors) from the United States and around the World. Minterrornews.com has become one of the most popular and informative Internet resources for mint errors and is read by thousands of dealers and collectors.

Two major Mint Error News sponsors are Mike Byers and ANACS. Mike Byers is the Publisher and Editor of Mint Error News Magazine.



Mike Byers (mikebyers.com) has been a Professional Numismatist since 1978. He specializes in U.S. and World errors, and is now the largest dealer of the world's rarest mint errors. His new discoveries of major mint errors has been front page news for years. Mike Byers is also a Consultant for ANACS for Mint Errors.



ANACS is one of the three major grading services. They have been authenticating, certifying and encapsulating mint errors since 1991 which is years longer than the other two grading services combined. ANACS is highly respected in the Numismatic Community and has extensive experience in authenticating mint errors.

Mike Byers is a life member of ANA since 1985, a charter member of NGC and a featured dealer/member of PCGS. He is also a founder member of the California Coin & Precious Metals Association and a life member of the Central States Numismatic Society.

Two other sponsors to minterrornews.com are Tim Bullard (errorcointrader.com) and Allan Levy (alsocoins.com). Because of their combined experience and insight of the error coin market, they will bring valuable news and information to minterrornews.com.

Additional sponsors are CoinLink, CoinFacts.com, errorworldclub.org, Eureka Trading, uspatterns.com, Northeast Numismatics, Robert L. Astrich and The Software Clinic. We encourage collectors and dealers to submit articles and photos of major mint errors that we may feature on the website.

Off-Center Errors

by Al Levy (alscoins.com)

Here are records of recent sales of off-center mint errors on eBay:

1. All coins were listed on eBay and closed from January 1, 2005 to March 31, 2005.
2. All lots had buyers. If the coins actually changed hands is unknown.
3. A picture accompanied each lot or it was not recognized.
4. Mislabeled items were ignored.
5. Some lots may have changed hands more than once.

6. "D" next to the date symbolizes that the coin had damage or was scratched.
7. "C" next to the date symbolizes that the coin was cleaned.
8. "B" next to the date symbolizes that the coin had damage and was cleaned.
9. If the date or mint mark was missing or partially visible, parentheses were used.
10. Postage/handling/insurance fees were ignored.
11. Major auctions were not listed.

DENOM	YEAR	NOTES	GRADE	LESS:11%	11%-35%	36%-75%	OVER 75%
1c	1825	B	VG		\$ 99.99		
1c	1825	D	VG		\$ 149.99		
1c	1835	D	AG		\$ 149.99		
1c	1859	D	XF		\$ 305.00		
1c	1863	D	XF		\$ 203.50		
1c	1897		FINE		\$ 249.00		
1c	1902		AG	\$ 24.99			
1c	1908		ANACS 40		\$ 232.50		
1c	1917-D		AG	\$ 37.10			
1c	1917-S		GOOD		\$ 29.00		
1c	1917-S		FINE		\$ 56.09		
1c	1919		PCGS 58		\$ 155.01		
1c	1919-S		FINE	\$ 36.10			
1c	1929-S	D	ANACS NET 45	\$ 31.05			
1c	1930-D		XF	\$ 60.79	\$ 59.00		
1c	1934		AU		\$ 55.00		
1c	1936		CH BU R&B	\$ 49.99			
1c	1937	D	VG	\$ 19.99			
1c	1937		UNC BRN	\$ 33.00			
1c	1937		ANACS 65 R&B	\$ 80.75			
1c	1941		XF		\$ 35.58		
1c	1941		UNC BRN		\$ 34.50		
1c	1943	D	AU	\$ 42.99			
1c	1943	B	XF		\$ 67.10		
1c	1943		AU	\$ 53.00			
1c	1943		NGC 62	\$ 112.50			
1c	1943	D	PCI 64	\$ 26.00			
1c	1943-S		PCGS 40	\$ 34.00			
1c	1944	D	VG	\$ 12.50			
1c	1944		FINE	\$ 15.49			
1c	1944	C	VF		\$ 15.50		
1c	1944	D	AU	\$ 13.60			
1c	1944		AU	\$ 34.33			
1c	1944		UNC BRN	\$ 9.38	\$ 33.99		
1c	1944		UNC R&B		\$ 32.00		
1c	1944		NGC 64 R&B	\$ 23.95			
1c	1944		PCGS 65 RED	\$ 51.00			
1c	1944-S		XF	\$ 29.98			
1c	1945		UNC R&B	\$ 41.00			
1c	1945-S		ICG 55	\$ 25.40			
1c	1948-D		BU R&B		\$ 90.76		
1c	1950-D	D	FINE			\$ 46.51	
1c	1951-D		BU R&B		\$ 69.98		

DENOM	YEAR	NOTES	GRADE	LESS:11%	11%-35%	36%-75%	OVER 75%
1c	1951-D		BU RED		\$ 42.25		
1c	(1952)-(?)	B	AU			\$ 45.77	
1c	1954-D	D	UNC BRN			\$ 76.05	
1c	1954-S		UNC BRN	\$ 39.00			
1c	1956-D	D	BU R&B			\$ 30.99	
1c	1957-D		AU				\$ 42.62
1c	(1)957-(?)		BU BRN				\$ 23.02
1c	(1)959-(?)		BU RED			\$ 122.54	
1c	195(?)-(?)		AU			\$ 15.99	
1c	1963-D		BU BRN			\$ 27.76	
1c	1964	C	BU			\$ 14.99	
1c	1964		BU RED			\$ 28.00	
1c	1964-D		AU				\$ 24.50
1c	1964-D		UNC BRN			\$ 24.01	
1c	(1)964-D		UNC BRN				\$ 27.51
1c	1967		UNC BRN	\$ 9.00		\$ 14.75	
1c	1967		UNC R&B			\$ 18.25	
1c	(?)67		UNC R&B				\$ 15.49
1c	1968-D		UNC BRN			\$ 11.28	\$ 22.06
1c	1968-D		BU R&B			\$ 15.01	
1c	1968-S		BU BRN	\$ 27.50			
1c	1968-S		BU RED	\$ 28.85			
1c	1968-S		CH BU RED		\$ 49.50		
1c	1968-S		PCGS 64 RED			\$ 99.50	
1c	1969-D		AU			\$ 25.18	
1c	1969-D		BU BRN				\$ 18.50
1c	1969-D		CH BU BRN			\$ 19.99	
1c	1969-D		CH BU RED			\$ 26.01	
1c	1969-D		GEM BU BRN			\$ 15.50	
1c	1970		UNC RED		\$ 10.50		
1c	1970-D		CH BU R&B			\$ 15.23	
1c	1971		UNC RED	\$ 7.05			
1c	1971		BU	\$ 7.49			
1c	1971		NGC 64 BRN		\$ 24.95		
1c	1971-D	B	AU			\$ 6.51	
1c	1971-D		BU R&B			\$ 12.17	
1c	1971-D		NGC 66 RED			\$ 24.33	
1c	1972		CH BU RED		\$ 19.99		
1c	1972-D		AU			\$ 13.27	
1c	1972-D		UNC BRN			\$ 13.90	
1c	1972-D		SEGS 62 BRN			\$ 12.50	
1c	1973-D	D	UNC R&B	\$ 9.49			
1c	1973-D		UNC BRN			\$ 11.23	

Off-Metal Errors

by Al Levy (alscoins.com)

1. ALL LOTS HAD BUYERS. IF THE COINS ACTUALLY CHANGED HANDS IS UNKNOWN.
2. A PICTURE ACCOMPANIED EACH LOT OR IT WAS NOT RECOGNIZED.
3. BLURRY PICTURES OR OTHER PROBLEMS ARE NOTATED UNDER "OBSERVATION".
4. ITEMS MISLABELLED COMMANDED A SMALL PREMIUM.
5. SOME LOTS CHANGED HANDS MORE THAN ONCE.
6. ANY SCRATCHES, DENTS OR DEFECTS NOTATED WERE EITHER IN THE DESCRIPTION OR GRADING SERVICES' HOLDERS.
7. AUCTION HOUSES THAT LISTED THESE ERRORS WERE IGNORED.
8. SHIPPING CHARGES ARE NOT INCLUDED.

FROM 01/01/05 TO 03/31/05			
DOUBLE DENOMINATIONS			
DESCRIPTION	GRADED	SOLD	OBSERVATION
1c STRUCK ON A STRUCK 10c 1998	BU	\$ 600.00	LOUSEY PICTURE. DOUBLING SHOWED IN A SMALL AREA ONLY. BETTER DESCRIPTION.
1c STRUCK ON A STRUCK 10c 1998	PCGS 66	\$ 810.00	FLIPOVER. LOTS OF DIME DETAIL REMAINS.
5c STRUCK ON A STRUCK 1c 2000-D	GEM BU R&B	\$ 735.99	NICKEL DATE & MINTMARK ONLY. LOTS OF DETAIL REMAINS OF CENT
5c STRUCK ON A STRUCK 1c 2001-D	PCGS 58	\$ 460.00	FULL DATE & MINTMARK. NOT AS MUCH "CENT" DETAIL REMAINS.
5c STRUCK ON A STRUCK 1c 2000-D	PCGS 58	\$ 611.00	FULL DATE & MINTMARK. NOT AS MUCH "CENT" DETAIL REMAINS. NICE RED COLOR
OFF METALS			
DESCRIPTION	GRADED	SOLD	OBSERVATION
1c/10c 1957	UNC	\$ 350.00	TEST CUT ON RIM @ K1:00
1c/10c 1957	ANACS 60	\$ 1,800.00	FULL DATE & MINTMARK AREA. TONED IN HOLDER.
1c/10c 1959	NCS NET UNC	\$ 316.10	OBVERSE SCRATCH. 2.07 GRAMS. FULL DATE & MINTMARK AREA
1c/10c 1959	PCGS 63	\$ 1,375.00	FULL DATE & MINTMARK AREA.
1c/10c 1959-D	ANACS 60	\$ 1,199.50	FULL DATE & MINTMARK AREA.
1c/10c 1964-D	CH BU	\$ 381.76	OBVERSE PICTURE ONLY. FULL CENT SIZE. PLATED????????
1c/10c 1966	XF	\$ 123.50	OBVERSE & REVERSE SCRATCHES
1c/10c 196(6)	PCGS 62	\$ 305.00	LAST DIGIT IN DATE ALMOST GONE.
1c/10c 1968	ANACS 63	\$ 399.00	FULL DATE & MINTMARK AREA.
1c/10c 1968-S	PCGS 64	\$ 550.00	FULL DATE & MINTMARK AREA.

<u>DESCRIPTION</u>	<u>GRADED</u>	<u>SOLD</u>	<u>OBSERVATION</u>
1c/10c 1968-S	PCGS 64	\$ 675.00	FULL DATE & MINTMARK AREA.
1c/10c 1977	PCGS 64	\$ 260.00	FULL DATE & MINTMARK AREA.
1c/10c 1981-D	BU	\$ 232.50	FULL DATE & MINTMARK.
1c/10c 1994	PCGS 65	\$ 295.00	FULL DATE & MINTMARK AREA.
1c/10c 1996	PCGS 64	\$ 271.00	FULL DATE & MINTMARK.
1c/10c 1997	NGC 63	\$ 480.00	2.2 GRAMS.
1c/10c 1997	NGC 65	\$ 268.00	FULL DATE & MINTMARK AREA. 2.3 GRAMS
1c/10c 1999	UNC	\$ 199.99	FULL DATE & MINTMARK AREA.
1c/10c 1999	PCGS 67	\$ 366.00	FULL DATE & MINTMARK AREA.
1c/10c 2001-D	BU	\$ 360.00	FULL DATE & MINTMARK.
5c/1c (1972)	AU BRN	\$ 273.78	WEIGHS 3.1 GRAMS. PARTIAL DATE.
5c/1c 1972-D	ANACS 63 R&B	\$ 305.00	LOOKS LIKE" FULL DATE & MINTMARK
5c/1c 1977	ANACS 61 R&B	\$ 213.50	FULL DATE
5c/1c 1978	AU	\$ 177.50	FULL DATE & MINTMARK AREA.
5c/1c 1978	UNC BRN	\$ 225.06	FULL DATE & MINTMARK AREA.
5c/1c 1978	NGC 61 BRN	\$ 158.72	FULL DATE & MINTMARK AREA. 3.1 GRAMS
5c/1c 1979	NCS AU	\$ 150.00	REVERSE DAMGE. IMPROPER CLEANING.
5c/1c 1980-D	BU R&B	\$ 213.50	FULL DATE & MINTMARK.
5c/1c 1980-P	AU	\$ 88.00	FULL DATE & MINTMARK. VERY HEAVY DAMAGE ON OBVERSE & REVERSE.
5c/1c 1980-P	UNC BRN	\$ 130.47	FULL DATE & MINTMARK.
5c/1c 1980-P	ANACS NET 50	\$ 108.50	PARTIAL DATE. FULL MINTMARK. SCRATCHES.
5c/1c 1980-P	ANACS 64 RED	\$ 227.50	FULL DATE & MINTMARK.
5c/1c 1980-P	NGC 62 BRN	\$ 152.50	MOST OF DATE. FULL MINTMARK.
5c/1c (1980)-P	PCGS 58	\$ 177.50	SCAN WAS FUZZY. LOOKS LIKE A PARTIAL DATE & RED COLOR.
5c/1c 1980-P	PCGS 58	\$ 218.63	BROWN COLOR
5c/1c (1980)-P	PCGS 63 R&B	\$ 224.72	MOST OF DATE, ALL OF MINTMARK REMAIN.
5c/1c 1980-P	PCGS 63 R&B	\$ 188.00	FULL DATE & MINTMARK AREA.
5c/1c 1980-P	PCGS 63 R&B	\$ 207.50	MOST OF DATE. FULL MINTMARK.
5c/1c (1981)-P	CH BU RED	\$ 148.50	∩ DATE, ALL OF MINTMARK.
5c/1c (1988)-(P)	ANACS 62 R&B	\$ 225.06	∩ OF DATE & MINTMARK (MINTMARK NOT NOTATED ON HOLDER)
5c/1c (1999)-(D)	ACG 65 RED	\$ 270.00	PARTIAL DATE & PARTIAL MINTMARK.
25c/5c (1965)	PCGS 50	\$ 150.00	VERY TOP OF DATE SHOWS.
25c/5c (1966)	XF	\$ 89.10	UGLY
25c/5c 1966	AU	\$ 191.50	FULL DATE
25c/5c 1967	BU	\$ 180.50	MOST OF DATE.
25c/5c 1974	PCI 40	\$ 111.00	FULL DATE & MINTMARK AREA.
25c/5c 1974-D	AU	\$ 90.00	REVERSE SCRATCH. OBVERSE GOUGE. FULL DATE & MINTMARK.
25c/5c 1977	PCGS 58	\$ 148.00	FULL DATE & MINTMARK AREA.
25c/5c 1978	ANACS 58	\$ 168.50	FULL DATE & MINTMARK.
25c/5c 1980-P	ANACS 64	\$ 169.50	FULL DATE & MINTMARK.

Off-Metal Errors

<u>DESCRIPTION</u>	<u>GRADED</u>	<u>SOLD</u>	<u>OBSERVATION</u>
25c/5c 1982-P	NGC 63	\$ 192.50	FULL DATE & MINTMARK.
25c/5c DE 1999-D	PCGS 64	\$ 743.00	FULL DATE & MINTMARK.
25c/5c FL 2004-P	BU	\$ 1,500.00	FULL DATE & MINTMARK AREA.
25c/5c FL 2004-P	PCGS 66	\$ 1,520.00	FULL DATE & MINTMARK.
25c/SILVER 10c NO DATE	BU	\$ 361.00	NO DATE. MINTMARK AREA VISIBLE (P).
25c/10C 1970-D	PCI 58	\$ 190.00	FULL DATE & MINTMARK AREA. (LOOKS LIKE A "10c STOCK")
25c/10c 1971-D	PCGS 63	\$ 515.00	FULL DATE & MINTMARK.
25c/10c 1971-(?)	UNC	\$ 344.00	FULL DATE AREA BUT WEAKLY STRUCK. MISSING MINTMARK AREA.
25c/10c 1994-P	NGC 64	\$ 635.10	MOST OF DATE REMAINS. ALL OF MINTMARK
50c/25c NO DATE "D" SILVER	NGC 64	\$ 691.00	NONE OF THE (1964) DATE SHOWS.
50c/\$1 SBA (1979)	AU	\$ 799.00	WEIGHS 8.1 GRAMS. CORROSIVE SPOT ON OBVERSE BACK OF HEAD
SBA \$1/25c 1979-P	ANACS 55	\$ 525.00	FULL DATE & MINTMARK. SCRATCH ON CHEEK
196(0) 1c U.S. /PHILLIPPINES 10centavos	ANACS 64	\$ 687.00	LARGE DATE - LAST DIGIT OF DATE PARTIALLY GONE
1967 PHILIPPINES 5s/1c U.S.	ICG 65 RED	\$ 158.01	FULL STRIKE
1968 PHILIPPINES 5s/1c U.S.	NGC 63 RED	\$ 158.01	FULL STRIKE
1974-D \$1IKE U.S./PHILIPPINES PISO	ICG 58	\$ 808.44	WEIGHS 224 GRAINS, VERY TOP OF DATE SHOWS. 70%CU 18% ZN 12% NL
OFF STOCK			
DESCRIPTION	GRADED	SOLD	OBSERVATION
1c 1941/THICK BRASS PLANCHET	ANACS 40	\$ 149.95	BROWN COLOR
1c 1941/THICK BRASS PLANCHET	ANACS 50	\$ 167.14	3.39 GRAMS. OWNER CLAIMS AS A PERUVIAN PLANCHET BUT IT WEIGHS 3.0 GRAMS.
25c STRUCK ON DIME STOCK 1970-D	UGLY	\$ 60.99	DARK/DIRTY PLANCHET. MIGHT BE AS DESCRIBED?
25c STRUCK ON DIME STOCK 1970-D	XF	\$ 51.03	AVERAGE LOOK.
25c STRUCK ON DIME STOCK 1970-D	AU	\$ 16.50	WEIGHT = 4.4 GRAMS.
25c STRUCK ON DIME STOCK 1970-D	AU	\$ 23.17	AVERAGE LOOK.
25c STRUCK ON DIME STOCK 1970-D	UNC	\$ 24.05	USUAL WEAKNESS AROUND RIM.
25c STRUCK ON DIME STOCK 1970-D	BU	\$ 35.00	WEIGHS 4.2 GRAMS
25c STRUCK ON DIME STOCK 1970-D	BU	\$ 46.00	WEIGHS 4.3 GRAMS (LISTED AS A 25c/5c OFF METAL)
25c STRUCK ON DIME STOCK 1971-D	PCGS 62	\$ 152.50	NO WEIGHT ON HOLDER
25c STRUCK ON 50c STOCK 1965	ANACS NET 45	\$ 100.00	COUNTING ROOM DAMAGE. MISDISCRIBED AS "SILVER" CLAD
25c STRUCK ON 50c STOCK 1977	AU	\$ 46.00	THICK PLANCHET, WEIGHS 6.78 GRAMS. SCRATCHES ON OBV & REV
50c/25c THICKNESS STOCK 1971-D	NGC 58	\$ 201.99	8.8 GRAMS.

Clad Layer Split Off Errors

by Al Levy (alscoins.com)

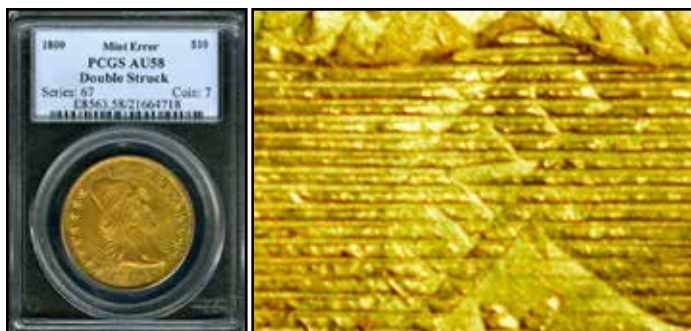
1. ALL LOTS HAD BUYERS. IF THE COINS ACTUALLY CHANGED HANDS IS UNKNOWN.
2. A PICTURE ACCOMPANIED EACH LOT OR IT WAS NOT RECOGNIZED.
3. BLURRY PICTURES OR OTHER PROBLEMS ARE NOTATED UNDER "OBSERVATION".
4. ITEMS MISLABELLED COMMANDED A SMALL PREMIUM.
5. SOME LOTS CHANGED HANDS MORE THAN ONCE.
6. ANY SCRATCHES, DENTS OR DEFECTS NOTATED WERE EITHER IN THE DESCRIPTION OR GRADING SERVICES' HOLDERS.
7. AUCTION HOUSES THAT LISTED THESE ERRORS WERE IGNORED.
8. SHIPPING CHARGES ARE NOT INCLUDED.

CLAD LAYER OFF/SPLIT OFFS			
FROM 01/01/05 TO 03/31/05			
DESCRIPTION	GRADED	SOLD	OBSERVATION
10c 1968-D REVERSE	CH BU	\$ 48.93	BROWN COLOR
10c 1972 OBVERSE	VF	\$ 36.50	BROWN COLOR
10c 1980-P OBVERSE	PCGS 60	\$ 56.05	REDDISH BROWN COLOR.
10c 1999-P REVERSE	BU	\$ 52.00	REDDISH BROWN COLOR.
10c 2001-D REVERSE	AU	\$ 61.00	NICE RED COLOR. VERY LITTLE WEAR.
10c 2001-D REVERSE	CH BU	\$ 59.00	RED COLOR.
10c 2003-P OBVERSE	CH BU	\$ 79.00	LAST DIGIT PARTIALLY MISSING. COULD BE A "2". RED COLOR
25c 1965 40% OBVERSE	PCGS 50	\$ 51.00	BROWN COLOR. LOOKS LIKE THE LAYER WAS HELPED TO SPLIT.
25c 1967 REVERSE	PCGS 55	\$ 78.77	REDDISH BROWN COLOR.
25c 1978 OBVERSE	AU	\$ 143.00	LISTED AS AU58. NICE RED COLOR. LOOKED TO BE A HIGHER GRADE.
25c 1980-(?) 35% REVERSE	AU	\$ 26.00	DEFINITELY HELPED (DAMAGED)
25c 1980-P OBVERSE	UNC R&B	\$ 47.00	REDDISH BROWN COLOR.
25c 1983-P REVERSE	BU	\$ 100.99	RED & BROWN COLOR
25c 1983-P REVERSE	VF	\$ 10.05	APPROXIMATELY 50% CLAD LAYER OFF.
25c 1995-D REVERSE	XF	\$ 71.00	REDDISH BROWN COLOR.
25c 1995-D REVERSE	CH BU	\$ 39.50	REDDISH BROWN COLOR.
25c 1998-D REVERSE	UNC	\$ 62.55	REDDISH BROWN COLOR.
25c 1998-P OBVERSE	PCGS 63	\$ 89.00	REDDISH BROWN COLOR. 95% OF CLADDING MISSING. (NOTED ON HOLDER)

Clad Layer Split Off Errors

<u>DESCRIPTION</u>	<u>GRADED</u>	<u>SOLD</u>	<u>OBSERVATION</u>
25c DE 1999-D REVERSE	PCGS 64	\$ 799.00	BROWN COLOR
25c GA 1999-D REVERSE	AU	\$ 237.85	BROWN COLOR
25c CT 1999-P REVERSE	PCGS 63	\$ 411.55	BROWN COLOR
25c NJ 1999-D REVERSE	PCGS 61	\$ 477.00	REDDISH BROWN COLOR.
25c NJ 1999-D REVERSE	PCGS 62	\$ 527.89	RUST COLOR
25c MA 2000-D REVERSE	PCGS 63	\$ 376.00	REDDISH BROWN COLOR.
25c NH 2000-D REVERSE	BU	\$ 270.00	BROWN COLOR
25c NH 2000-P REVERSE	ICG 64 RED	\$ 330.00	RED COLOR. 4.67 GRAMS
25c SC 2000-D REVERSE	PCGS 62	\$ 228.50	RED & BROWN COLOR
25c SC 2000-P REVERSE	ANACS 63	\$ 350.00	REDDISH BROWN COLOR.
25c SC 2000-P REVERSE	NGC 65	\$ 331.00	REDDISH BROWN COLOR.
25c SC 2000-P REVERSE	PCGS 64	\$ 381.00	RED COLOR
25c MD 2000-D OBVERSE	NGC 64	\$ 178.50	REDDISH BROWN COLOR.
25c MD 2000-D REVERSE	AU	\$ 157.50	REDDISH BROWN COLOR.
25c MD 2000-D REVERSE	BU	\$ 200.00	REDDISH BROWN COLOR.
25c MD 2000-D REVERSE	NGC 64	\$ 256.01	RED & BROWN COLOR
25c MD 2000-P REVERSE	PCGS 64	\$ 350.67	REDDISH BROWN COLOR.
25c VA 2000-P OBVERSE	ANACS 64	\$ 340.00	NICE RED COLOR.
25c VA 2000-P REVERSE	NGC 65	\$ 444.00	RED COLOR
25c NY 2001-P OBVERSE	NGC 64	\$ 251.50	REDDISH BROWN COLOR.
25c NY 2001-P REVERSE	PCGS 64	\$ 460.55	RUST COLOR
25c NC 2001-D OBVERSE	BU	\$ 303.00	REDDISH BROWN COLOR.
25c NC 2001-P REVERSE	PCGS 64	\$ 360.00	BROWN COLOR
25c RI 2001-D OBVERSE	NGC 63	\$ 153.50	REDDISH BROWN COLOR.
25c VT 2001-D REVERSE	PCGS 64	\$ 431.50	REDDISH BROWN COLOR.
25c TN 2002-D REVERSE	AU	\$ 371.00	BROWN COLOR
25c LA 2002-D REVERSE	AU	\$ 406.00	BROWN COLOR. LOOKED DAMAGED?
25c MS 2002-D OBVERSE	AU	\$ 261.00	BROWN COLOR
25c MI 2004-P OBVERSE	NGC 65	\$ 776.99	BRIGHT ORIGINAL RED COLOR
25c MO 2003-D OBVERSE	NGC 64	\$ 306.00	REDDISH BROWN COLOR.
25c OH 2002-D OBVERSE	PCI 58	\$ 261.89	BROWN COLOR. HOLDER STATED "MISSING LAYER"
25c OH 2002-D REVERSE	PCI 58	\$ 153.50	GOLDEN BROWN COLOR
25c OH 2002-P OBVERSE	NGC 65	\$ 569.00	BRIGHT ORIGINAL RED COLOR
25c IA 2004-P OBVERSE	CH BU	\$ 272.00	NICE RED COLOR.
\$1 1979-D OBVERSE	NGC 65	\$ 315.00	REDDISH BROWN COLOR. 5.9 GRAMS.

Double Struck 1800 \$10 Eagle Featured in Upcoming Heritage Galleries Auction



Editor's Note: Below is the description from the Heritage Galleries listing:

1800 \$10 --Double Struck--AU58 PCGS. B. 1-A, Taraszka-23, Breen-6842, R.4. Only 5,999 pieces were struck of the 1800 ten dollar, making it a scarce date among early gold coins. Apparently the dies were retired after a die crack developed above LIBERTY on the upper obverse. That crack is especially noticeable on this piece, which would indicate that this was among the last coins struck in 1800. But what is most remarkable about this coin is not the date or even the grade, but the double striking seen on each side. This is not machine doubling that is commonly seen on early type coins. This piece was struck once, then the struck coin rotated almost 180 degrees and it was struck a

second time. Traces of the first strike are plentiful on each side, but the most obvious ones are portions of LIBERTY to the right of the stars and through stars 1-5, and on the reverse the UNU of UNUM is boldly impressed in the horizontal shield stripes.

This is the first coin we have seen like this. As all error collectors know, gold errors are of the highest order of rarity. Quality control was strictest with gold coins throughout the Mint's history, and it was certainly just as strict in the early days--perhaps even more so, as so much of the early republic's prestige was represented by these large coins when presented abroad. This is a very sharply struck example that shows crisp definition on the eagle's breast above the shield, and strong detailing on Liberty's hair and complete star radials. Almost complete mint luster remains on each side with semi-prooflike fields. The olive-gold color of the coin has been allowed to tone naturally and has taken on an attractive overlay of reddish patina on each side. A few field marks are noted, and there are several marks on Liberty's hair and cap, but frankly, it is difficult to determine just what is a post-striking defect and what is a result of the double striking. A very rare and obviously important coin for the early gold specialist.



Unique NGC Set of Paraguay Overstrikes

by Mike Byers (mikebyers.com)

This is a unique set of nineteenth century Paraguay patterns that were overstruck on previously struck gold, silver and copper coins. NGC recently certified this spectacular discovery set which is now being published for the first time for the numismatic community in this Mint Error News Magazine cover story.

Throughout history, some overstrikes were intentionally produced for several reasons. Sometimes overstrikes occur due to a coinage shortage. Another factor is the lack of available planchets to strike a new design.

In modern times, overstrikes are considered mint errors. Overstrikes are coins that have been struck over a struck coin. Generally speaking, there are two major types of overstrikes. The first type would be a double denomination (a Lincoln Cent struck over a struck Dime). Although these are overstrikes, they are referred to as double denominations and are known on many denominations of coins from many countries.

The second type of overstrike is a coin which is struck (either deliberately or as a mint error) on a previously struck coin from a different era and country. In ancient times, it was not uncommon to strike coins over previously struck coins with portraits of earlier Kings. In Colonial times, coins circulating were sometimes struck using other coins that

were in circulation, regardless of whether they were from the country striking the coin or from a different country.

An example of a rare overstrike is a 1915 Panama Half Commemorative which was struck in Proof over a cut down St. Gaudens \$20 gold piece. Another example is a rare overstrike from Mexico. It is a gold 8 Escudos struck over an earlier type and is listed in Krause as rare. The Panama Half and 8 Escudos were intentional overstrikes. There are also examples of unintentional overstrikes which are classified as mint errors.

The fascinating aspect of this unique set of Paraguay overstrikes is the fact that the dies used were unfinished pattern dies which had incomplete dates and that four of these patterns in this set were struck over struck gold coins. These gold coins were from Paraguay, Chile and Argentina and are on different denominations with different dates. Several of the gold coins that were overstruck are either rare dates or rare types and were in spectacular condition when they were hand selected. There is no doubt that this was a presentation set that was struck in the Mint and preserved to this day in mint state condition. This set is one of the most historic, dramatic and unusual numismatic rarities ever struck by an official Mint.

18XX Paraguay Peso Struck Over a Chile 1849 8 Escudos

The largest gold overstrike was a Pattern for the Paraguay Peso. The unfinished die only had the first two digits of the date. It was struck over an already struck Chile 1849 8 Escudos and is in magnificent condition. There is considerable detail of the 8 Escudos visible on both the obverse and reverse under the design for the Paraguay Peso. This is the most fascinating gold overstrike in this set due to its large size, condition of preservation, detail present from both designs and its status as being unique.



18XX Paraguay 50 Centavos Struck Over a Chile 1853 10 Pesos

The next gold overstrike was a Pattern for the Paraguay 50 Centavos. Once again the unfinished die only had the first two digits of the date. It was struck over an already struck Chile 1853 10 Pesos and is also in magnificent condition. There is considerable detail of the 10 Pesos visible on both the obverse and reverse under the design for the Paraguay 50 Centavos. Since the Chile 10 Pesos was larger than the Paraguay 50 Centavos, the original Chile 10 Pesos design is visible around the peripheral. This pattern overstruck in gold is also unique.



18XX Paraguay 50 Centavos Struck Over a Chile 1859 10 Pesos

This gold overstrike was also for the Paraguay 50 Centavos Pattern. Using the same unfinished die as the gold overstrike described above, it was struck over an already struck Chile 1859 10 Pesos and is in gem condition. Since the size of the Chile 10 Pesos was very close to the diameter of the Paraguay 50 Centavos, some of the design of the understrike is visible on both sides. This pattern overstruck in gold is also unique.



18XX Paraguay 20 Centavos Struck Over an Argentina 1887 5 Pesos

The fourth gold overstrike was created when an Argentina 1887 5 Pesos was used instead of a blank planchet to strike this Paraguay 20 Centavos. Once again, the unfinished die was used to strike this coin. There is considerable detail of the Argentina 5 Pesos on both the obverse and reverse under the design of the Paraguay 20 Centavos. It is also in gem mint state condition. This pattern overstruck in gold is also unique.



18XX Paraguay Peso Struck Over an Argentina 1882 Peso

The largest silver overstrike was a pattern for the Paraguay Peso. As with all of the gold overstrikes, the unfinished die only had the first two digits of the date. It was struck over an already struck Argentina 1882 Peso and is in choice mint state condition. There is considerable detail of the understrike visible on both sides. Even though it is not struck in gold, or over a struck gold coin, it is still a spectacular overstrike since it is on a large silver Peso from another country.



The remaining four overstrikes in this unique set also used the same unfinished Paraguay Pattern Dies and were overstruck on struck silver and copper coins from Argentina with various dates.

18XX Paraguay 50 Centavos Struck Over an Argentina 1883 50 Centavos



18XX Paraguay 10 Centavos Struck Over an Argentina 1882 10 Centavos



18XX Paraguay 5 Centavos Struck Over an Argentina 1883 10 Centavos



18XX Paraguay 50 Centavos Struck Over an Argentina 2 Centavos



18XX Paraguay Peso Struck Over a Chile 1849 8 Escudos



18XX Paraguay 50 Centavos Struck Over a Chile 1853 10 Pesos



18XX Paraguay 50 Centavos Struck Over a Chile 1859 10 Pesos



18XX Paraguay 20 Centavos Struck Over an Argentina 1887 5 Pesos



BYERS NUMISMATIC CORP

MIKEBYERS.COM



The Largest Dealer of the World's Rarest Mint Errors™
U.S. & WORLD MAJOR MINT ERRORS • DIE TRIALS • NUMISMATIC RARITIES

BUYING & SELLING

MAJOR U.S. MINT ERRORS

- ANACS, PCGS, NGC, ICG, SEGS & RAW
- U.S. 1¢ THRU \$50 ERRORS
- 19TH AND 20TH CENTURY TYPE COINS:
ALL DENOMINATIONS
- MODERN COINS: STATES QUARTERS, KENNEDY HALVES, IKE, SBA AND SACAGAWEA DOLLARS
- MAJOR AND DRAMATIC ERRORS FROM \$500 TO \$100,000
- DIE TRIALS, HUB TRIALS, SPLASHERS, UNIFACE AND OFF-METAL STRIKES

U.S. CURRENCY ERRORS

- ESPECIALLY ERRORS ON \$2, \$50, \$100 & \$500 NOTES
- DRAMATIC AND UNIQUE PRINTING & CUTTING ERRORS FROM \$500 TO \$10,000
- DOUBLE DENOMINATIONS, MULTIPLE IMPRESSIONS & MULTIPLE ERRORS
- LARGE SIZE NOTE ERRORS

WORLD GOLD & SILVER ERRORS

- ANACS, PCGS, NGC, ICG & RAW
- ALL DENOMINATIONS FOR MAJOR WORLD COUNTRIES
- ESPECIALLY SWISS, GERMAN, ENGLISH, FRENCH, CANADIAN & MEXICAN
- ALL 12 COUNTRIES IN THE EUROPEAN MONETARY UNION (EUROS)
- ALL COUNTRIES IN THE BRITISH COMMONWEALTH
- MEDIEVAL THRU MODERN
- MAJOR AND DRAMATIC ERRORS FROM \$500 TO \$50,000
- DIE TRIALS, SPLASHERS, UNIFACE AND OFF-METAL STRIKES

ANCIENT ERRORS

- ANACS, ICG & RAW
- ALL GOLD DENOMINATIONS
- 500 BC TO 950 AD
- GREEK, ROMAN AND BYZANTINE COINAGE
- MAJOR AND DRAMATIC ERRORS FROM \$500 TO \$10,000

MIKE BYERS

P.O. Box 5090, San Clemente, CA USA 92674
Office: 949-276-7072 • Fax: 949-276-7073

Fed Ex Address only: 1001 Avenida Pico #C 612, San Clemente, CA 92673
E-Mail: mike@mikebyers.com • Website Design: sam@mikebyers.com

Mike Byers, Professional Numismatist since 1978

Byers Numismatic Corp. A California Corporation Since 1980

Mike Byers is a consultant to ANACS for Mint Errors



CoinFacts.com

Your Online Reference For U.S. Coins



**“The Ultimate Coin Book” by CoinFacts.com, Inc.
Now Available on CD-Rom**

Our new CD-Rom is a mirror image of the CoinFacts website but with no download delays caused by slow Internet connections. In fact, no Internet connection is required at all, making the CoinFacts CD-Rom perfect for use in your home, office or even your portable computer at coin shows. Plop the CoinFacts CD-Rom in your PC and have immediate, lightning-fast access to the thousands of full color images and indispensable numismatic information. Please visit CoinFacts.com for more information and to purchase.

eureka trading systems



eureka trading . com



NORTHEAST NUMISMATICS INC. RARE COINS · PERSONAL SERVICE

Northeast Numismatics
10 Concord Crossing, Ste. 220
Concord, MA 01742
800-449-2646
www.northeastcoin.com

Northeast Numismatics has an impressive inventory of over 1,200 U.S. and foreign coins. We have a strong selection of mint errors, both U.S. and foreign. And we carry every area of United States coinage from colonials through rare gold including type, commemoratives, silver dollars and much, in addition to our extensive inventory of world coins.

High quality “fresh” coins are what we are known for and take pleasure in offering. We constantly are hearing from our customers about our excellent prices and high customer service. 2003 is our 39th year of business, so order with complete confidence. Also, please keep in mind that we are always buying coins of all kinds, certified and uncertified, to fill our want lists.

1877 Seated Quarter Die Trial Adjustment Strike

This is a unique mint error and the only one known for any of the denominations in the Seated series (Half Dimes through Dollars). All die trials for US TYPE coins are extremely rare. This piece was in the collection of a well known East Coast coin dealer. This die trial shows the full date and part of the design on the obverse and reverse.



AD 582-602 Byzantine Gold Justin II Full Brockage

This is a 1400 year old Byzantine Gold coin that is a first strike reverse brockage of the obverse. It is almost in Mint State condition and shows incredible detail. Full brockages on ancient gold coins are extremely rare. The few that I have handled were overstruck by the dies in an attempt to correct the mint error and save the coin. This piece was not overstruck and shows the full brockage.



Lincoln Cent Struck on Bow-Tie Dime Scrap

Bow-tie errors are very scarce, but to have an off-metal bow-tie error is unbelievable! This Lincoln Cent was struck on a clad Dime bow-tie piece of scrap. The reverse is uniface. UNIQUE.





BYERS NUMISMATIC CORP



MIKEBYERS.COM



The Largest Dealer of the World's Rarest Mint Errors™

U.S. & WORLD MAJOR MINT ERRORS • DIE TRIALS • NUMISMATIC RARITIES



Unique SPECIMEN Silver Certificate Set of 16
PCGS Certified



1920 SL 25¢
Struck on Peru 20C Planchet
NGC MS 60 FH Unique



1838 \$5 Die Trial Splasher
J-A1838-6
PCGS MS 65 UNIQUE



Unique 1866 \$2½ Struck on a 3 Cent Nickel Planchet
NGC MS 66



Pair of Indian Head 1¢ Die Caps
Obverse & Reverse
PCGS MS 64



Barber Half
Full Obverse Brockage
PCGS AU 58 UNIQUE



Unique Set of Four Paraguay Gold Overstrikes
NGC Certified



1921-S Morgan Dollar
Struck 45% Off-Center
NGC MS 63



1895-O Barber Dime
Obverse Die Cap
PCGS MS 64



1846 J-110A \$5 Obv Die Trial
Struck on \$2½ Trial
NGC MS 65 BN



1924 SL 25¢
Double Struck
ANACS AU 55



1862 Indian Head 1¢
Deep Obverse Die Cap
PCGS MS 62



Unique Set of Three Paraguay Gold Overstrikes
NGC Certified



1887 \$3 Indian Gold Proof
Triple Struck
PCGS PR 63



1942 Walking Liberty 50¢
Struck on Silver 25¢ Planchet
PCGS MS 65



Unique Jefferson Nickel Die Trial
PCGS Certified



1802/1 \$5 Draped Bust Gold
Triple Struck Obverse
ANACS EF 45



1865 2¢
Deep Obverse Die Cap & Brockage



1804 \$2½ Capped Bust To Right
Double Struck
NGC Fine 15



1898 Barber 25¢
Obverse Die Cap & Brockage
PCGS MS 62



1945-S WL 50¢
Struck on El Salvador 25¢ Planchet
NGC MS 63 UNIQUE



1806 \$5 Capped Bust Triple Struck
Rotated 90°
PCGS AU 50



1865 \$1 Indian Gold Proof
Triple Struck Reverse
PCGS PR 64 Cameo



1920 Buffalo Nickel
Struck on Copper Planchet
NGC AU 55 UNIQUE



1874 \$1 U.S. Gold T3
Full Brockage
PCGS MS 62 UNIQUE



1873 \$20 Closed 3 J-1344
Double Struck
NGC PF 61 RB



1901/0-S \$5 Liberty Gold
10% Off-Center
PCGS AU 55



1853 U.S. Assay Gold \$20
Double Struck
NGC AU 55



1965 English Penny
Struck on Gold Planchet
PCGS MS 62



1875-CC \$20 Liberty Gold
Partial Collar
NGC MS 62



Pair of Barber Dime Die Caps
Obverse & Reverse
PCGS AU 55 UNIQUE



Franklin Half Dollar
Struck on 1948 Cent
NGC MS 64 BN



1910 Lincoln Cent
Uniface Test Strike
PCGS AU 58



1904 \$20 Gold
Double Struck
ANACS MS 60 Proof-Like



Indian Cent on Half Dime Planchet
Uniface Obverse
PCGS MS 63



1851 3¢ Obverse & Reverse
Die Trials
Struck on Cardboard



1864 2¢ Obverse Die Cap
Mated With Brockage
PCGS MS 62



Martha Washington Dollar Test Piece
Clad Plan w/Exp Edge
NGC MS 64



1869 Indian Cent
Struck on Silver Dime Planchet
PCGS AU 55



1856 Large Cent Obverse Cap/
Brockage Reverse
Gem BU



Martha Washington Dollar Test Piece
Sac Plan w/Exp Edge
NGC MS 64



1906-D \$20 Liberty Gold
Broadstruck
NGC AU 58

1875 CA Gold Fractional 25¢ Uniface Reverse

This CA Gold Fractional has a uniface reverse since there were two planchets struck at the same time. All major mint errors on U.S. Gold coins are extremely rare.



New Contact Information:

MIKE BYERS

P.O. Box 5090, San Clemente, CA USA 92674

Office: 949-276-7072 · Fax: 949-276-7073

Fed Ex Address only: 1001 Avenida Pico #C 612, San Clemente, CA USA 92673

Web Site: mikebyers.com · e-mail: mike@mikebyers.com

1873 Octagonal 25¢ BG-793 CA Gold Fractional Rarity-5 Indian Head Full Obverse Brockage

An incredibly rare obverse brockage of BG-793. The obverse was brockaged with the incuse design of the reverse. The reverse has the regular design with a prooflike finish. This unique brockage is listed in the second edition of Breen-Gillio. From the Jay Roe Collection of California Small Denomination Gold. This piece was certified by Collectors Universe (the parent company of PCGS). It is described as a brockage with the BG number and Jay Roe Pedigree.



DOWNLOAD NOW AT MIKEBYERS.COM

HARD COPIES ARE AVAILABLE TO OUR REGULAR CUSTOMERS

BYERS NUMISMATIC CORP
MIKEBYERS.COM



The Largest Dealer of the World's Rarest Mint Errors™
U.S. ERRORS • WORLD & ANCIENT ERRORS • DIE TRIALS • CURRENCY ERRORS

Mike Byers' 2005 Catalog

Featuring
U.S. & World
Major Mint Errors
and Die Trials

This catalog features almost 700 rarities with a value of over \$6 million.



CONECA

The Combined Organizations of Numismatic Error Collectors of America



CONECA is a national numismatic organization devoted to the education of error and variety coin collectors. CONECA focuses on many error and variety specialties, including doubled dies, Repunched mintmarks, multiple errors, clips, double strikes, off-metals and off-centers -- just to name a few. It publishes an educational magazine, The Errorscope, which is printed and mailed to members bimonthly. CONECA offers a lending library, examination, listing and attribution services; it holds annual meetings at major conventions (referred to as Errorama) around the country, and offers auction services to its members. Please visit conecaonline.org and enjoy!

CONECA Variety Attribution Services

CONECA offers two attribution services. One service enables members and non-members to send their coins directly to an authorized CONECA attributer. The other service is offered through the numismatic grading firm of ICG and enables CONECA members and non-members to have their coins attributed by a CONECA attributer and then graded and slabbed by ICG.

CONECA Error Examination Services

CONECA offers two examination services. One service enables members and non-members to send coins to an authorized CONECA examiner who will return an opinion of each coin's error classification. The other service is offered through the numismatic grading firm of ICG and enables CONECA members and non-members to have their coins examined by a CONECA examiner and then graded and slabbed by ICG.

conecaonline.org

1865 \$1 Indian Gold Proof Triple Struck Reverse

This is the only known proof \$1 Indian dated 1865, which has been recently certified by PCGS as triple struck reverse. Upon close examination there are actually five strikes on the reverse. There is detail from the original strike and also from the subsequent strikes as the coin slightly rotated in the collar.

Not only is this the only known multiple struck proof gold Dollar, it is also an rare dated Civil War mint error and is in gem proof condition.





BYERS NUMISMATIC CORP



MIKEBYERS.COM



The Largest Dealer of the World's Rarest Mint Errors™

U.S. & WORLD MAJOR MINT ERRORS • DIE TRIALS • NUMISMATIC RARITIES

Consign Your Coins to Mike Byers

Terms and Conditions

We are offering this service for error collectors and dealers alike. The reason why we are doing this is to promote the error business through the world wide web and to connect error collectors with the coins they have been searching for. In order to post your item on our web site: byersnc.com, you must agree to the following terms and conditions.

1. All major U.S. mint errors are accepted if they are certified by ANACS, PCGS, NGC or ICG.
2. The approximate value of each item must exceed \$1000.
3. The minimum time for any listing is thirty days.
4. Seller agrees to a seven day return privilege from date of receipt.
5. Seller agrees to use an escrow service if requested by the buyer.
6. We reserve the right to deny or cancel any listing at any time.
7. All listing are subject to prior sale.

Please do not offer us the following:

1. More than two coins bonded together.
2. Caps more than ½ inch high.
3. U.S. Errors that were obviously and intentionally struck as error coins. No impossible mint errors.

We only accept consignments of U.S. Errors that were legitimately found or released thru normal distribution channels.

Scanning Specifications

1. Scan both the obverse and reverse of the entire holder.
2. Scan with a resolution of at least 300 dpi.
3. Save the picture in jpeg format (jpg).

Information Requirements

In addition to e-mailing a photo of your item, please include the following information:

1. Name, Address & Phone Number
2. E-Mail Address
3. Asking Price

After your item is listed, we will contact you by e-mail with any offers and questions. Once a price is agreed upon we will handle the entire sale for a 10% transaction fee, which includes all costs (eBay fees, grading fees, webmaster charges, postage and registration fees, insurance, paperwork, etc.).

If you have a Mint Error collection for sale or would like to sell your duplicates and do not want to consign your coin(s), we can purchase your entire collection outright. Please contact us at mike@mikebyers.com.

Coming In 2005 From Zyrus Press
A New Book By Mike Byers

From the Publisher & Editor of mintererrornews.com

MINT **E**RRO**R**TM GUIDE

Your Guide to the Most Spectacular Major Mint Errors



DISCOVERIES

AND

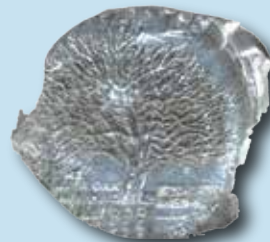
PRICE GUIDE



**FOR U.S. AND WORLD
MAJOR MINT ERRORS**



AND DIE TRIALS



by **Mike Byers**

Design & Layout: Sam Rhazi

**ZYRUS
PRESS**

P.O. 17810
Irvine, CA 92623
(888) 622-7823



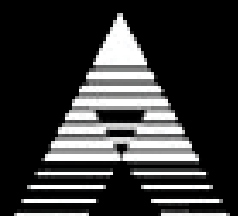
Extraterrestrial Numismatics

www.anacs.com

ANACS is the Collector's Choice because we know what counts: knowledge, integrity, and service. How much we value coin collecting is evident in our work.

The ANACS team enthusiastically works to advance coin collecting by offering unequalled expertise and developing new services.

This makes ANACS the choice of hobbyists, professional numismatists, and dealers. We are the coin grading service to contact when you want to know all the details about your coin's authenticity and grading.



Collect with passion. ANACS

Mint Error News Price Guide

This price guide is brought to you by Mint Error News. It has been compiled by many of the top major mint error dealers.

This price guide is a guide. Prices fluctuate due to the date, grade, eye appeal and how dramatic the striking error is. Rarity is also a factor. The price is sometimes based on the rarity and grade of the type of coin as well as how rare the error is. The price can also vary depending on whether two collectors are bidding for the same rare major mint error. When purchasing a mint error, it is important to use multiple resources to determine value, as there are many mint errors that do not fit into one category.

Proof Errors



Proof coins are struck by technicians who hand feed the blanks into special presses. They are produced, examined, and packaged using extreme quality control. It is very unusual to find major proof errors. A few broadstrikes, off-centers, double strikes in collars and off-metals have been known to be found in sealed proof sets. Proof errors are aggressively sought after by many error collectors.

A very small group of Proof errors recently came from a collection that was auctioned by the State of California. The U.S. Secret Service inspected and released this collection to the State of California determining that it was legal to own. The State of California then auctioned the collection and it has been dispersed since the sale.

Denomination	Broadstrikes	Die Trials	Double/Triple Strikes	Off-Center Strikes	Partial Collar Errors
Proof Lincoln Cent	\$1,500 - \$2,500	N/A	\$4,000	\$1,500 - \$3,000	\$750
Proof Jefferson Nickel	\$2,500 - \$4,000	\$4,000	\$6,000	\$2,000 - \$5,000	\$1,000
Proof Clad Dime	\$3,000 - \$5,000	N/A	\$6,000	\$2,500 - \$5,000	\$1,250
Proof Clad Quarter	\$4,000 - \$5,000	N/A	\$7,500	\$3,000 - \$6,000	\$1,500
Proof Clad Half	\$5,000 - \$7,000	\$4,000 - \$5,000	\$7,500	\$4,000 - \$7,500	\$2,000

Mint Error News Price Guide

Broadstrikes



A broadstruck error occurs when a coin is struck without the collar to form the rim and edge that is part of the shape of the coin. Coins can be broadstruck on either type one or type two planchets. When a coin is broadstruck the blank being fed into the collar will spread and distort outward as it is being struck because the collar isn't in the correct position to retain it.

Denomination	(Small) XF/AU	(Small) Unc	(Large) XF/AU	(Large) Unc
Large Cent	\$150	\$300	\$400	\$1,500
Flying Eagle Cent (1857 – 1858)	\$1,000	\$2,500	\$1,500	\$5,000
Indian Cent	\$50	\$150	\$200	\$350
Lincoln Cent 1930 and Earlier	\$50	\$150	\$100	\$250
Lincoln Cent 1943 Steel	\$40	\$100	\$75	\$200
Proof Lincoln Cent	N/A	\$1,500	N/A	\$2,500
3 Cent Nickel	\$250	\$1,000	\$400	\$1,500
3 Cent Silver	\$1,000	\$3,500	\$1,500	\$5,000
Shield Nickel	\$400	\$1,250	\$1,000	\$2,500
Liberty Nickel	\$150	\$300	\$200	\$600
Buffalo Nickel	\$100	\$200	\$200	\$500
Jefferson Nickel War Time	\$100	\$200	\$200	\$500
Proof Jefferson Nickel	N/A	\$2,500	N/A	\$4,000
Seated Half Dime Legend	\$1,500	\$3,500	\$2,000	\$7,500
Seated Dime Legend	\$1,500	\$3,500	\$2,000	\$7,500
Barber Dime	\$150	\$250	\$200	\$400
Mercury Dime	\$40	\$150	\$150	\$250
Proof Clad Dime	N/A	\$3,000	N/A	\$5,000
Barber Quarter	\$600	\$1,250	\$1,000	\$2,500
Standing Liberty Quarter	\$2,000	\$4,000	\$3,000	\$6,000
Washington Quarter Silver	\$75	\$150	\$100	\$250
State Quarter	N/A	\$25	N/A	\$50
Proof Clad Quarter	N/A	\$4,000	N/A	\$5,000
Barber Half	\$2,500	\$3,500	\$3,000	\$5,000
Walking Liberty Half	\$3,000	\$5,000	\$4,000	\$7,000
Franklin Half	\$1,500	\$3,000	\$2,000	\$4,000
Kennedy Half Silver	\$150	\$250	\$200	\$300
Kennedy Half Clad	\$40	\$60	\$50	\$75
Proof Clad Half	N/A	\$5,000	N/A	\$7,000
Morgan Dollar	\$200	\$500	\$400	\$1,000
Peace Dollar	\$4,000	\$6,000	\$6,000	\$7,500
IKE Dollar	\$100	\$150	\$150	\$200
SBA Dollar	\$50	\$75	\$100	\$200
Sac Dollar	N/A	\$300	N/A	\$500

Mint Error News Price Guide

Partial Collars



Partial collar strikes occur when there is a malfunction of the striking press. This causes the collar to be in an incorrect position. The lower die (usually the reverse die) is recessed in the collar. This allows the coin which is going to be struck to have a formed rim. After a coin is struck the lower die raises upwards, pushing the struck coin out of the collar and ejecting it. If a blank entering the collar is not properly seated, it will only have partial reeding as it is struck. The edge of this coin will have a partial reeding and a partial blank surface area. Recently, the Mint has installed new machinery where either die can be installed in either position.

Denomination	XF/AU	Unc
Large Cent	\$100	\$200
Flying Eagle Cent (1857 – 1858)	\$500	\$1,500
Indian Cent	\$35	\$100
Lincoln Cent 1930 and Earlier	\$30	\$100
Lincoln Cent 1943 Steel	\$25	\$50
Proof Lincoln Cent	N/A	\$750
3 Cent Nickel	\$150	\$500
3 Cent Silver	\$750	\$2,000
Shield Nickel	\$200	\$600
Liberty Nickel	\$50	\$150
Buffalo Nickel	\$50	\$75
Jefferson Nickel War Time	\$40	\$60
Proof Jefferson Nickel	N/A	\$1,000
Seated Half Dime Legend	\$750	\$1,500
Seated Dime Legend	\$500	\$1,250
Barber Dime	\$75	\$150
Mercury Dime	\$30	\$100
Proof Clad Dime	N/A	\$1,250
Barber Quarter	\$300	\$750
Standing Liberty Quarter	\$1,250	\$2,000
Washington Quarter Silver	\$40	\$75
State Quarter	N/A	\$15
Proof Clad Quarter	N/A	\$1,500
Barber Half	\$1,000	\$1,500
Walking Liberty Half	\$1,500	\$3,500
Franklin Half	\$500	\$1,000
Kennedy Half Silver	\$50	\$100
Kennedy Half Clad	\$20	\$30
Proof Clad Half	N/A	\$2,000
Morgan Dollar	\$150	\$300
Peace Dollar	\$1,000	\$2,500
IKE Dollar	\$50	\$100
SBA Dollar	\$20	\$30
Sac Dollar	N/A	\$100

Mint Error News Price Guide

Uniface Strikes



Uniface coins occur when there have been two blank planchets in the press at the same time. The other blank will obstruct the die on either the obverse or reverse side, which will prevent it from having that design on the coin. There are many different variations involving uniface errors. In addition to having a 100% blank obverse or reverse, a coin can be struck off-center, with a blank planchet in the collar which will obstruct one side of the off-center. There are also mated pairs which have a combination of multiple errors which can include a side which is uniface. Finally, there are uniface strikes due to a die cap which adhered to the die, forming itself in the shape of a die and striking blank planchets.

Denomination	Uniface Obverse XF	Uniface Obverse Unc	Uniface Reverse XF	Uniface Reverse Unc
Large Cent	\$1,500	\$4,000	\$1,250	\$3,000
Indian Cent	\$1,250	\$3,000	\$1,000	\$2,500
Lincoln Cent 1943 Steel	\$250	\$500	\$200	\$400
Lincoln Cent Wheat Ears	\$50	\$100	\$40	\$75
3 Cent Nickel	\$1,500	\$3,000	\$1,250	\$2,500
Shield Nickel	\$1,750	\$4,000	\$1,500	\$3,000
Liberty Nickel	\$2,000	\$3,500	\$1,500	\$3,000
Buffalo Nickel	\$2,250	\$3,000	\$2,000	\$2,500
Jefferson Nickel War Time	\$300	\$750	\$250	\$500
Jefferson Nickel	\$20	\$40	\$20	\$40
Barber Dime	\$2,000	\$3,000	\$1,500	\$2,500
Mercury Dime	\$1,500	\$2,500	\$1,250	\$2,250
Roosevelt Dime Silver	\$100	\$150	\$100	\$150
Roosevelt Dime Clad	\$40	\$75	\$35	\$60
Washington Quarter Silver	\$400	\$750	\$350	\$500
Washington Quarter Clad	\$100	\$125	\$75	\$100
State Quarter	N/A	\$300	N/A	\$500
Kennedy Half Clad	\$750	\$1,000	\$500	\$750
IKE Dollar	\$2,000	\$3,000	\$1,750	\$2,500
SBA Dollar	N/A	\$1,000	N/A	\$750
Sac Dollar	N/A	\$1,500	N/A	\$1,000

Mint Error News Price Guide

Bonded Coins



Bonded coins occur when the feeder system, which supplies blank planchets to the coin press, malfunctions and jams. When this occurs, a struck coin is not properly ejected and another planchet is fed into the collar and is struck. This struck coin will land on top of the previously unejected strike. These coins will then crush and bond together. This may occur many times as more coins bond.

Denomination	2 Planchets	3-4 Planchets
Lincoln Cent Wheat Ears	\$2,500	–
Lincoln Cent Memorial	\$400	\$1,000
Jefferson Nickel	\$600	\$1,500
Roosevelt Dime Silver	\$1,000	–
Roosevelt Dime Clad	\$600	\$2,000
Washington Quarter Silver	\$2,500	–
Washington Quarter Clad	\$1,500	–
State Quarter	\$5,000	–
Kennedy Half Silver	\$10,000	–
Kennedy Half Clad	\$7,500	–
IKE Dollar	–	–
SBA Dollar	–	–
Sac Dollar	–	–

Mint Error News Price Guide

Coins Struck on Feeder Finger Tips



After a recent tour of the U.S. Mint at Philadelphia, it was discovered that the minting process had changed to some degree. One of the changes was that “feeder fingers” were used during the striking of all denominations of U.S. coins. Prior to this tour, U.S. coins that were struck on feeder finger tips were authenticated and described as being struck on aluminum scrap. Coins from all modern denominations have been discovered that were struck on the tips of these feeder fingers.

Denomination	Small	Medium	Large
Lincoln Cent Memorial	\$2,500	\$3,500	\$5,000
Jefferson Nickel	\$3,000	\$4,500	\$6,000
Roosevelt Dime Clad	\$3,000	\$6,000	\$7,500
Washington Quarter Clad	\$4,000	\$6,000	\$7,500
State Quarter	\$4,500	\$6,500	\$8,500
Kennedy Half Clad	–	–	–
SBA Dollar	–	–	\$12,500
Sac Dollar	\$4,500	\$7,500	\$10,000

Mint Error News Price Guide

Struck Fragments



The blanking press takes the coils of metal strips and punches blanks out of it, ejecting the webbing at the other end. The webbing is cut into small scrap pieces to be melted and recycled. Occasionally a scrap piece will be mixed with the blank planchets and struck by the dies. Struck fragments are rare in the larger denominations. These can be uniface or die struck both sides and are very rare on type coins.

Denomination	Uniface	Die Struck Both Sides
Indian Cent	–	\$4,000
Lincoln Cent Wheat Ears	\$750	–
Lincoln Cent Memorial	\$75	\$125
3 Cent Nickel	–	\$7,500
Jefferson Nickel	\$100	\$200
Roosevelt Dime Silver	\$300	\$750
Roosevelt Dime Clad	\$150	\$250
Washington Quarter Silver	\$750	–
Washington Quarter Clad	\$200	\$300
State Quarter	\$750	\$1,000
Kennedy Half Silver	–	–
Kennedy Half Clad	\$750	\$1,250
IKE Dollar	–	–
SBA Dollar	\$2,000	\$4,000
Sac Dollar	–	–

Mint Error News Price Guide

Mated Pairs



Mated pairs involve two individual coins with different errors that were struck together at the same time. Mated pair error combinations can be found in most error types and come in many shapes and sizes. Mated pairs can be overlapped when one of the coins is struck off-center on top of another coin. Another type involves a brockage where a struck coin was perfectly centered on a blank and restruck. Some mated pairs involve a die cap where the cap and brockage coin are discovered together, but this is a scarce find.

The rarest mated pair type involves two die caps (obverse and reverse) where both dies were capped at the same time and both die caps are mated. This last type is extremely rare and there are only a few known examples of mated pairs involving an

obverse die cap and reverse die cap. There are several of these mated pairs known on Kennedy Halves including two dated 1976, which is the Bicentennial year. One of the most spectacular mated pairs involve two Barber Dimes, an obverse die cap mated to a reverse die cap and are unique.

Mated pairs can also involve an off-metal where a smaller blank planchet or smaller struck coin was struck on top of a larger coin. This type is extremely rare. The most spectacular pair known is a double struck Franklin Half which was mated to a Lincoln Cent. The Lincoln Cent blank was on top of the obverse of the struck Franklin Half. This pair was then struck together. It is unique.

Denomination	Overlapping	Full Brockage	Die Cap	2 Die Caps
Lincoln Cent Wheat Ears	\$1,000	\$1,500	–	–
Lincoln Cent Memorial	\$200	\$300	\$500	\$750
Liberty Nickel	–	\$20,000	–	–
Jefferson Nickel (pre War Time)	–	–	–	\$15,000
Jefferson Nickel	\$350	\$500	\$650	\$1,000
Barber Dime	–	–	–	\$40,000
Roosevelt Dime Silver	\$1,000	\$2,000	\$1,500	–
Roosevelt Dime Clad	\$500	\$750	\$1,250	\$2,000
Washington Quarter Silver	\$2,000	–	–	–
Washington Quarter Clad	\$1,000	\$2,500	–	–
State Quarter	\$3,000	\$5,000	\$7,500	–
Kennedy Half Silver	–	–	\$10,000	–
Kennedy Half Clad	\$7,500	\$8,500	\$10,000	\$12,500
IKE Dollar	–	–	–	–
SBA Dollar	\$7,500	–	–	–
Sac Dollar	–	–	–	–

Mint Error News Price Guide

Transitional Errors



A transitional error occurs when a coin is struck on a planchet from a previous year with different metal composition. The most famous transitional is a 1943 copper cent struck on a 1942 copper blank. 1943 cents were struck in steel because of the copper shortage during World War II. Other famous transitionals include 1965 coinage struck in silver instead of clad.

There are also transitionals struck on blanks for the next year. An example is 1964 coinage in clad instead of silver. Most recently, transitionals were discovered involving the SBA and Sacagawea Dollars of 1999 and 2000. There are eight known 1999 SBA Dollars struck on the brass planchet for the 2000 Sacagawea Dollar, and four known 2000 Sacagawea Dollars struck on a clad planchet for the 1999 SBA Dollar.

Denomination	Off-Metal Planchet	Circulated	AU	Unc	Choice Unc - Gem
Lincoln Cent 1943 Transitional	Copper Cent Planchet	\$40,000 +	\$60,000 +	\$85,000 +	\$100,000 +
Lincoln Cent 1944 Transitional	Steel Cent Planchet	\$7,500	\$12,500	\$17,500	\$25,000
Lincoln Cent 1964 Transitional	Clad Dime Planchet	\$2,500	\$4,000	\$5,000	\$6,500
Lincoln Cent 1965 Transitional	Silver Dime Planchet	\$2,750	\$4,500	\$6,000	\$7,500
Roosevelt Dime 1964 Transitional	Clad Dime Planchet	\$5,000	\$6,500	\$7,500	\$8,500
Roosevelt Dime 1965 Transitional	Silver Dime Planchet	\$5,000	\$6,500	\$7,500	\$8,500
Washington Quarter 1964 Transitional	Clad Quarter Planchet	\$5,000	\$6,500	\$7,500	\$8,500
Washington Quarter 1965 Transitional	Silver Quarter Planchet	\$5,000	\$6,500	\$7,500	\$8,500
Kennedy Half 1964 Transitional	Clad Half Planchet	\$5,000	\$6,000	\$7,000	\$9,000
Kennedy Half 1965 Transitional	Silver Half Planchet	\$5,000	\$6,500	\$7,500	\$10,000
Kennedy Half 1964 Transitional	Clad Quarter Planchet	\$5,000	\$6,000	\$7,500	\$8,500
Kennedy Half 1965 Transitional	Silver Quarter Planchet	\$6,000	\$7,500	\$8,000	\$9,000
Ike Dollar Transitional	40% Silver Planchet	\$2,750	\$3,000	\$3,500	\$4,000
SBA Dollar Transitional	Sacagawea Planchet	N/A	N/A	\$12,500	\$15,000
Sacagawea Dollar Transitional	SBA Planchet	N/A	N/A	\$12,500	\$15,000

Mint Error News Price Guide

U.S. Gold Errors



Major mint errors on U.S. Gold coins are the most prized category of all mint errors. Gold errors are very rare and a few have traded in the \$75,000 to \$100,000 range. Even a broadstruck U.S. Gold coin can easily sell for \$15,000 to \$30,000 compared to a broadstruck Cent, Nickel, Dime or Quarter which all sell for well under \$10. Many serious collectors of Gold Errors have to wait patiently for months and sometimes even years to acquire that one special piece for their collection.

The prices listed here are for common dates in AU-Unc. Better dates and errors that are in gem condition are worth considerably more.

Denomination	Partial Collar	Broadstruck	Clipped Planchet	3% - 5% Off-Center	10% - 15% Off-Center
\$1 Gold Type 1	\$5,000	\$10,000	\$5,000	\$12,500	\$20,000
\$1 Gold Type 2	\$6,000	–	\$12,500	–	–
\$1 Gold Type 3	\$4,000	\$7,500	\$5,000	\$10,000	\$20,000
\$2½ Liberty	\$5,000	\$7,500	\$4,000	\$10,000	\$15,000
\$2½ Indian	–	–	\$4,000	\$7,500	\$12,500
\$3 Indian	\$7,500	\$20,000	\$7,500	–	–
\$5 Liberty	\$6,000	\$12,500	\$6,000	\$15,000	\$25,000
\$5 Indian	–	–	\$6,000	\$15,000	\$30,000
\$10 Liberty	\$10,000	\$20,000	\$7,500	\$25,000	\$40,000
\$10 Indian	–	–	\$7,500	\$25,000	\$40,000
\$20 Liberty	\$10,000	\$25,000	\$10,000	\$30,000	\$150,000
\$20 St. Gaudens	–	–	\$10,000	–	–
\$5 American Eagle	\$1,000	\$2,000	\$750	\$2,500	\$3,500
\$10 American Eagle	\$1,250	\$2,500	\$1,000	\$3,000	\$3,500
\$25 American Eagle	\$1,500	\$3,000	\$1,500	\$3,500	\$5,000
\$50 American Eagle	\$2,000	\$4,000	\$2,000	\$5,000	\$7,500

Mint Error News Price Guide

Indents



An indent error occurs when two blanks are fed inadvertently into the same collar, with one blank partly overlaying on top of the other. When the hammer die strikes this combination, the upper blank will be forced into the lower blank, creating a depression which is shaped similar to the upper blank. A scarce type of indent occurs when a blank intended for one denomination lands on top of a blank from a different denomination.

Denomination	10% - 25% XF	30% - 50% XF	10% - 25% Unc	30% - 50% Unc
Large Cent	\$300	—	—	—
Indian Cent	\$250	\$500	\$400	\$650
Lincoln Cent 1943 Steel	\$100	\$300	\$175	\$500
Lincoln Cent Wheat Ears	\$30	\$75	\$75	\$125
3 Cent Nickel	\$500	\$1,250	\$1,500	\$3,000
Shield Nickel	\$1,000	\$1,500	\$2,000	\$3,000
Liberty Nickel	\$400	\$1,000	\$750	\$1,500
Buffalo Nickel	\$300	\$1,000	—	—
Jefferson Nickel War Time	\$200	\$400	\$400	\$750
Jefferson Nickel	\$10	\$25	\$15	\$30
Barber Dime	\$1,000	\$2,000	\$1,500	\$3,000
Mercury Dime	\$300	\$750	\$500	\$1,500
Roosevelt Dime Silver	\$30	\$60	\$50	\$100
Roosevelt Dime Clad	\$10	\$20	\$15	\$30
Washington Quarter Silver	\$100	\$200	\$150	\$300
Washington Quarter Clad	\$25	\$50	\$35	\$100
State Quarter	N/A	N/A	\$200	\$350
Kennedy Half Clad	\$150	\$300	\$200	\$400
IKE Dollar	\$350	\$1,000	\$500	\$1,500
SBA Dollar	N/A	N/A	\$250	\$500
Sac Dollar	N/A	N/A	\$400	\$750

Mint Error News Price Guide

Capped Dies



A capped die is caused when a struck coin sticks to the upper hammer die. Once the coin is struck to the die face, the reverse of the struck coin becomes the new die face. When the next blank is fed into the collar and the strike occurs, the reverse design of the adhered struck coin impresses itself into the new blank. This struck coin is a brockage strike. The coin that adhered to the upper die is known as a die cap. This process repeats itself as more coins are struck by the cap. The greater the number of strikes, the higher the cap metal will be pushed around the upper die shaft. Eventually, the cap brakes away from the die in the shape of a thimble.

Denomination	Obverse Cap XF	Obverse Cap Unc	Reverse Cap XF	Reverse Cap Unc
Large Cent	\$12,500	\$15,000	—	—
Indian Cent 1859	\$10,000	\$15,000	—	—
Indian Cent 1860-1864	\$8,500	\$12,500	—	—
Indian Cent 1864-1909	\$6,500	\$10,000	\$5,000	\$7,500
Lincoln Cent 1943 Steel	—	—	—	—
Lincoln Cent Wheat Ears	\$1,000	\$1,500	\$500	\$750
Lincoln Cent Memorial	\$150	\$200	\$50	\$100
2 Cent Piece	\$12,500	\$20,000	\$10,000	\$15,000
3 Cent Nickel	—	—	—	—
Shield Nickel	—	—	—	—
Liberty Nickel	\$12,500	\$20,000	—	—
Buffalo Nickel (1 Known)	—	\$30,000	—	—
Jefferson Nickel War Time	\$10,000	—	—	—
Jefferson Nickel	\$200	\$350	\$150	\$250
Barber Dime	\$12,500	\$15,000	\$7,500	\$10,000
Mercury Dime (2 Known)	\$6,500	\$10,000	—	—
Roosevelt Dime Silver	\$750	\$1,250	\$500	\$750
Roosevelt Dime Clad	\$200	\$400	\$200	\$250
Barber Quarter	\$15,000	\$20,000	—	—
Washington Quarter Silver	\$1,500	\$2,500	\$1,500	\$2,000
Washington Quarter Clad	\$350	\$500	\$250	\$350
State Quarter	N/A	\$1,000	N/A	\$600
Kennedy Half Silver	\$3,000	\$5,000	\$2,000	\$3,000
Kennedy Half Clad	\$2,000	\$3,500	\$1,500	\$2,000
Kennedy Half Bicentennial	\$2,500	\$4,000	\$1,750	\$2,500
IKE Dollar	—	\$20,000	—	—
SBA Dollar	N/A	\$20,000	N/A	\$15,000
Sac Dollar	N/A	\$20,000	N/A	\$15,000

Mint Error News Price Guide

Die Adjustment Strikes



Die adjustment strikes are also known as die trials. This error occurs when a coin is struck from the press with very little pressure. When the press is being set up and adjusted, extremely weak strikes occur as the strike pressure reaches its optimum level. These die trials are destroyed after being struck and are rarely found in circulation.

Denomination	XF/AU	Unc
Indian Cent	\$3,000	\$4,000
Lincoln Cent Wheat Ear	\$200	\$300
Lincoln Cent 1943 Steel	\$750	\$1,500
Lincoln Cent Memorial	\$50	\$75
2 Cent	\$5,000	–
Liberty Nickel	\$3,000	\$5,000
Buffalo Nickel	\$4,000	\$7,500
Jefferson Nickel War Time	\$1,250	\$2,000
Jefferson Nickel	\$75	\$100
Proof Jefferson Nickel	N/A	\$4,000
Barber Dime	\$4,000	\$5,000
Mercury Dime	\$3,500	\$5,000
Roosevelt Dime Silver	\$350	\$500
Roosevelt Dime Clad	\$100	\$125
Seated Quarter	\$10,000	\$15,000
Standing Liberty Quarter	\$15,000	\$20,000
Washington Quarter Silver	\$500	\$750
Washington Quarter Clad (Pre-State)	\$125	\$150
State Quarter	N/A	\$250 +
Walking Liberty Half	\$10,000	\$12,500
Kennedy Half Silver	\$500	\$750
Kennedy Half Clad	\$200	\$250
Proof Kennedy Half 40% Silver	N/A	\$5,000
Proof Kennedy Half Clad	N/A	\$4,000
Morgan Dollar	\$10,000	\$15,000
Peace Dollar	\$10,000	\$15,000
IKE Dollar	\$300	\$400
IKE Dollar Bicentennial	\$350	\$500
SBA Dollar	N/A	\$500
Sac Dollar	N/A	\$1,000

Mint Error News Price Guide

Double Denominations



One of the most expensive, popular, and desired types of errors are the double denominations. This error happens when a coin is struck on a previously struck coin of a smaller denomination. Examples are a cent on a struck dime, and a nickel on a struck cent. The most dramatic are those with considerable design visible from the original strike. There are a few known double denominations with different dates.

Denomination	Struck On	Circulated	AU	Unc
Lincoln Cent Wheat Ears	Mercury Dime	\$6,000	–	–
Lincoln Cent Wheat Ears	Roosevelt Dime	\$4,000	–	–
Lincoln Cent Wheat Ears	Foreign Coin	\$2,000	\$2,500	–
Lincoln Cent Memorial	Roosevelt Dime Silver	\$3,000	\$4,500	\$6,000
Lincoln Cent Memorial	Roosevelt Dime Clad	N/A	N/A	\$500
Lincoln Cent Memorial	Foreign Coin	N/A	600	\$750
Jefferson Nickel	Lincoln Cent Wheat Ears	\$1,500	\$2,000	\$2,500
Jefferson Nickel	Lincoln Cent Memorial	\$500	\$600	\$750
Jefferson Nickel	Foreign Coin	\$1,000	\$1,250	\$1,500
Jefferson Nickel	Roosevelt Dime	\$1,000	\$1,250	\$1,500
Roosevelt Dime Silver	Foreign Coin	\$4,000	\$5,000	\$7,500
Roosevelt Dime Clad	Foreign Coin	\$3,000	\$4,000	\$5,000
Washington Quarter Silver	Lincoln Cent Wheat Ears	\$3,000	\$4,000	\$6,000
Washington Quarter Silver	Lincoln Cent Memorial	\$2,500	\$3,000	\$3,500
Washington Quarter Silver	Foreign Coin	\$2,500	\$3,000	\$3,500
Washington Quarter Silver	Jefferson Nickel	\$3,000	\$4,000	\$6,000
Washington Quarter Silver	Roosevelt Dime Silver	\$2,500	\$3,000	\$3,500
Washington Quarter Clad	Lincoln Cent Memorial	\$2,500	\$3,000	\$3,500
Washington Quarter Clad	Foreign Coin	\$2,000	\$2,500	\$3,000
Washington Quarter Clad	Jefferson Nickel	\$2,500	\$3,000	\$3,500
Washington Quarter Clad	Roosevelt Dime Clad	\$2,000	\$2,500	\$3,000
State Quarter	Jefferson Nickel	N/A	\$5,000	\$6,000
State Quarter (Extremely Rare)	Any Other Denomination	N/A	\$10,000 +	–
Kennedy Half (Extremely Rare)	Any Denomination	–	–	–
IKE Dollar (Extremely Rare)	Any Denomination	–	–	–
Sac Dollar	Maryland State Quarter	N/A	\$4,500	\$5,500

Mint Error News Price Guide

Brockages



A brockage error can only occur when there are two coins involved. One of the coins involved will always be a struck coin which has not ejected properly. That struck coin will find its way back between the dies and will be struck next to a blank planchet which was fed into the collar. The image of that first struck coin will be impressed into that side of the blank planchet. The result will be a second coin which has images of the first coin impressed into it. Those images will be pressed into the coin and the image will be in reverse. This incuse sunken image is known as a brockage.

Denomination	50% Brockage XF	100% Brockage XF	50% Brockage Unc	100% Brockage Unc
Large Cent	\$600	\$1,000	\$3,000	–
Indian Cent	\$500	\$1,250	\$1,500	\$4,000
Lincoln Cent 1943 Steel	\$350	\$500	\$650	\$1,000
Lincoln Cent Wheat Ears	\$125	\$200	\$200	\$350
3 Cent Nickel	\$1,250	\$2,000	\$3,500	\$5,000
3 Cent Silver	\$2,000	\$3,000	\$3,000	\$6,000
Shield Nickel	\$1,500	\$2,500	\$3,500	–
Liberty Nickel	\$1,250	\$2,250	\$2,000	–
Buffalo Nickel	\$2,000	–	–	–
Jefferson Nickel War Time	\$250	\$750	\$750	–
Jefferson Nickel	\$50	\$75	\$50	\$150
Barber Dime	\$2,500	\$3,500	\$5,000	\$7,500
Mercury Dime	\$1,000	\$2,000	\$1,500	\$4,000
Roosevelt Dime Silver	\$100	\$200	\$150	\$250
Roosevelt Dime Clad	\$50	\$100	\$75	\$150
Washington Quarter Silver	\$200	\$500	\$500	\$1,000
Washington Quarter Clad	\$75	\$150	\$150	\$250
State Quarter	N/A	N/A	\$750	\$1,500
Kennedy Half Clad	N/A	N/A	\$650	\$1,500
IKE Dollar	\$1,500	\$2,000	\$3,000	\$5,000
SBA Dollar	N/A	N/A	\$500	\$1,500
Sac Dollar	N/A	N/A	\$1,500	–

Mint Error News Price Guide

Double & Multiple Strikes



When a blank planchet is struck by the dies, the normal procedure is for the feeders to eject the struck coin out of the collar and into a chute. If there is a malfunction and the struck coin isn't ejected, it may receive a second or third strike by the dies. A multiple struck coin can happen in many ways and have many combinations of errors.

Denomination	XF/AU	Unc
Large Cent	\$1,000	–
Indian Cent	\$600	\$1,000
Lincoln Cent 1930 and Earlier	\$850	\$1,500
Lincoln Cent 1943 Steel	\$400	\$1,000
Proof Lincoln Cent	N/A	\$4,000
3 Cent Nickel	\$2,000	\$3,500
Liberty Nickel	\$4,000	\$10,000
Buffalo Nickel	\$6,000	\$10,000
Jefferson Nickel War Time	\$750	\$2,000
Proof Jefferson Nickel	N/A	\$6,000
Barber Dime	\$4,000	\$10,000
Mercury Dime	\$3,500	\$8,500
Proof Clad Dime	N/A	\$6,000
Standing Liberty Quarter	\$12,500	\$20,000
Washington Quarter Silver	\$200	\$350
State Quarter	N/A	\$350 – \$750
Proof Clad Quarter	N/A	\$7,500
Walking Liberty Half	\$7,500	\$12,500
Franklin Half	\$5,000	\$10,000
Kennedy Half Silver	\$1,500	\$2,500
Kennedy Half Clad	N/A	\$750
Proof Kennedy Half Clad	N/A	\$7,500
Morgan Dollar	\$12,500	\$20,000
Peace Dollar	\$15,000	\$25,000
IKE Dollar	\$2,000	\$3,000
SBA Dollar	N/A	\$1,000 – \$2,500
Sac Dollar	N/A	\$1,500 – \$3,000

Mint Error News Price Guide

Off-Center Strikes



Off-center coins are one of the most common and best known types of errors. This happens when a blank which is supposed to be fed into the press, lands in the collar improperly. When this occurs only part of the blank is between the upper and lower dies. When the dies strike the blank, only that part will be struck with a design.

Denomination	10% - 15% XF/AU	25% - 60% XF/AU	10% - 15% Unc	25% - 60% Unc
Large Cent	\$400	\$2,500	\$1,000	\$7,500
Flying Eagle Cent (1857 – 1858)	\$2,500	\$10,000	\$5,000	\$15,000
Indian Cent	\$100	\$400	\$200	\$600
Lincoln Cent 1930 and Earlier	\$75	\$300	\$150	\$750
Lincoln Cent 1943 Steel	\$40	\$250	\$100	\$500
Proof Lincoln Cent	N/A	N/A	\$1,500	\$3,000
3 Cent Nickel	\$300	\$1,500	\$600	\$3,500
3 Cent Silver	\$1,000	\$5,000	\$2,000	–
Shield Nickel	\$750	\$2,500	\$1,000	\$7,500
Liberty Nickel	\$250	\$1,000	\$500	\$2,500
Buffalo Nickel	\$250	\$750	\$400	\$1,500
Jefferson Nickel War Time	\$100	\$500	\$200	\$1,000
Proof Jefferson Nickel	N/A	N/A	\$2,000	\$5,000
Seated Half Dime Legend	\$3,000	\$7,500	\$5,000	\$15,000
Seated Dime Legend	\$2,000	\$7,000	\$3,500	\$10,000
Barber Dime	\$300	\$1,500	\$500	\$2,500
Mercury Dime	\$100	\$750	\$150	\$1,250
Proof Clad Dime	N/A	N/A	\$2,500	\$5,000
Barber Quarter	\$1,500	\$5,000	\$2,500	\$10,000
Standing Liberty Quarter	\$5,000	–	\$15,000	–
Washington Quarter Silver	\$50	\$100	\$75	\$150
State Quarter	N/A	N/A	\$75	\$300
Proof Clad Quarter	N/A	N/A	\$3,000	\$6,000
Barber Half	\$3,000	\$8,500	\$5,000	–
Walking Liberty Half	\$4,000	\$12,500	\$7,500	–
Franklin Half	\$2,500	\$4,000	\$3,500	\$6,000
Kennedy Half Silver	\$100	\$500	\$250	\$1,000
Kennedy Half Clad	\$60	\$250	\$100	\$400
Proof Clad Half	N/A	N/A	\$4,000	\$7,500
Morgan Dollar	\$3,000	\$13,500	\$7,500	\$20,000
Peace Dollar	\$7,500	\$15,000	\$8,500	\$30,000
IKE Dollar	\$125	\$1,250	\$150	\$2,000
SBA Dollar	N/A	N/A	\$100	\$500
Sac Dollar	N/A	N/A	\$1,000	\$3,500

Mint Error News Price Guide

Off-Metals



Off-metal and wrong planchet errors occur when a correctly made blank from one denomination is accidentally fed into a press for another denomination. Examples are a nickel struck on a cent planchet and a cent struck on a dime planchet. The coin struck on an incorrect blank will weigh exactly what the denomination of that blank would have been. An even more dramatic wrong planchet error is a coin struck on a previously struck coin of a different metal.

Denomination	Off-Metal Planchet	Circulated	AU	Unc	Choice Unc – Gem
Indian Cent	Foreign Planchet	\$1,000	\$1,500	\$3,000	\$5,000
Indian Cent	Dime Planchet	\$7,500	\$12,500	–	–
Lincoln Cent Before 1919	Dime Planchet	\$4,000	\$6,500	\$10,000	–
Lincoln Cent Before 1919	Foreign Planchet	\$1,500	\$3,000	\$6,000	–
Lincoln Cent 1919 – 1940	Dime Planchet	\$2,000	\$2,500	\$4,000	\$6,000
Lincoln Cent 1919 – 1940	Foreign Planchet	\$750	\$1,250	\$2,000	\$2,500
Lincoln Cent 1943 Steel	Dime Planchet	\$1,500	\$2,500	\$3,500	\$4,500
Lincoln Cent 1943 Transitional	Copper Cent Planchet	\$40,000 +	\$60,000 +	\$85,000 +	\$100,000 +
Lincoln Cent 1944 Transitional	Steel Cent Planchet	\$7,500	\$12,500	\$17,500	\$25,000
Lincoln Cent Wheat Ears (1941-1964)	Dime Planchet	\$500	\$600	\$1,000	\$1,500
Lincoln Cent 1965 and Later	Dime Planchet	\$125	\$150	\$200	\$350
Lincoln Cent 1964 Transitional	Clad Dime Planchet	\$2,500	\$4,000	\$5,000	\$6,500
Lincoln Cent 1965 Transitional	Silver Dime Planchet	\$2,750	\$4,500	\$6,000	\$7,500
Shield Nickel	Foreign Planchet	\$7,500	\$12,500	–	–
Shield Nickel	Cent Planchet	\$6,000	\$12,500	\$15,000	–
Liberty Nickel	Foreign Planchet	\$400	\$750	\$1,250	\$2,000
Liberty Nickel	Cent Planchet	\$2,000	\$3,000	\$6,000	\$7,500
Buffalo Nickel	Foreign Planchet	\$2,500	\$6,000	\$10,000	–
Buffalo Nickel	Cent Planchet	\$2,000	\$4,000	\$6,000	\$8,000
Jefferson Nickel Before 1950	Cent Planchet	\$250	\$500	\$750	\$1,000
Jefferson Nickel 1950 and Later	Cent Planchet	\$125	\$150	\$200	\$250
Jefferson Nickel 1943	Steel Cent Planchet	\$1,000	\$2,000	\$3,000	\$5,000
Jefferson Nickel 1964 and Earlier	Silver Dime Planchet	\$200	\$300	\$350	\$400
Jefferson Nickel 1965 and Later	Clad Dime Planchet	\$150	\$200	\$225	\$250
Roosevelt Dime Silver	Foreign Planchet	\$2,000	\$2,500	\$3,000	\$3,500
Roosevelt Dime Clad	Foreign Planchet	\$1,500	\$2,000	\$2,250	\$2,500
Roosevelt Dime 1964 Transitional	Clad Dime Planchet	\$5,000	\$6,500	\$7,500	\$8,500
Roosevelt Dime 1965 Transitional	Silver Dime Planchet	\$5,000	\$6,500	\$7,500	\$8,500
Washington Quarter Silver	Cent Planchet	\$300	\$400	\$500	\$750
Washington Quarter Silver	Nickel Planchet	\$300	\$400	\$500	\$600
Washington Quarter Clad	Cent Planchet	\$250	\$300	\$400	\$500
Washington Quarter Clad	Nickel Planchet	\$100	\$150	\$200	\$250
Washington Quarter	Silver Dime Planchet	\$300	\$400	\$500	\$650
Washington Quarter	Clad Dime Planchet	\$250	\$300	\$350	\$400
Washington Quarter 1964 Transitional	Clad Quarter Planchet	\$5,000	\$6,500	\$7,500	\$8,500
Washington Quarter 1965 Transitional	Silver Quarter Planchet	\$5,000	\$6,500	\$7,500	\$8,500
State Quarter	Cent Planchet	N/A	\$6,500	\$7,500	\$8,000
Delaware State Quarter	Nickel Planchet	N/A	\$500	\$650	\$750
All Other State Quarters	Nickel Planchet	N/A	\$1,000	\$1,250	\$1,500
State Quarter	Dime Planchet	N/A	\$5,000	\$5,500	\$6,000
Walking Half	Quarter Planchet	\$12,500	\$15,000	\$17,500	\$22,500
Walking Half	Foreign Planchet	\$10,000	\$12,500	\$17,500	\$20,000
Franklin Half	Cent Planchet	\$3,000	\$4,000	\$5,000	\$6,000
Franklin Half	Nickel Planchet	\$3,000	\$4,000	\$5,000	\$6,000
Franklin Half	Dime Planchet	\$3,500	\$4,500	\$5,500	\$6,500
Franklin Half	Quarter Planchet	\$600	\$750	\$1,000	\$1,250
Kennedy Half Silver 1964	Cent Planchet	\$1,000	\$1,250	\$1,500	\$2,000
Kennedy Half Silver 1964	Nickel Planchet	\$1,000	\$1,250	\$1,500	\$2,000
Kennedy Half Silver 1964	Dime Planchet	\$1,000	\$1,250	\$2,000	\$2,500
Kennedy Half Silver 1964	Quarter Planchet	\$400	\$500	\$600	\$750
Kennedy Half Clad	Cent Planchet	\$750	\$850	\$1,000	\$1,500
Kennedy Half Clad	Nickel Planchet	\$750	\$850	\$1,000	\$1,250
Kennedy Half Clad	Dime Planchet	\$750	\$850	\$1,000	\$1,400
Kennedy Half Clad	Quarter Planchet	\$350	\$400	\$450	\$500
Kennedy Half 1964 Transitional	Clad Half Planchet	\$5,000	\$6,000	\$7,000	\$9,000
Kennedy Half 1965 Transitional	Silver Half Planchet	\$5,000	\$6,500	\$7,500	\$10,000
Kennedy Half 1964 Transitional	Clad Quarter Planchet	\$5,000	\$6,000	\$7,500	\$8,500
Kennedy Half 1965 Transitional	Silver Quarter Planchet	\$6,000	\$7,500	\$8,000	\$9,000
Ike Dollar	Cent Planchet	\$3,000	\$3,750	\$5,000	\$6,000
Ike Dollar	Nickel Planchet	\$3,000	\$3,500	\$5,000	\$6,000
Ike Dollar	Dime Planchet	\$3,250	\$3,750	\$5,500	\$6,500
Ike Dollar	Quarter Planchet	\$2,750	\$3,000	\$4,000	\$4,500
Ike Dollar	Half Planchet	\$1,600	\$1,750	\$2,000	\$2,500
Ike Dollar	Foreign Planchet	\$900	\$1,000	\$1,250	\$1,500
Ike Dollar Transitional	40% Silver Planchet	\$2,750	\$3,000	\$3,500	\$4,000
SBA Dollar	Cent Planchet	N/A	\$1,750	\$2,250	\$3,000
SBA Dollar	Nickel Planchet	N/A	\$6,000	\$7,000	\$8,000
SBA Dollar	Dime Planchet	N/A	\$6,000	\$7,000	\$8,000
SBA Dollar	Quarter Planchet	N/A	\$600	\$850	\$1,000
Sac Dollar	Cent Planchet	N/A	\$8,000	\$9,000	\$10,000
Sac Dollar	Nickel Planchet	N/A	\$7,500	\$8,000	\$9,000
Sac Dollar	Dime Planchet	N/A	\$8,000	\$9,000	\$10,000
Sac Dollar	Quarter Planchet	N/A	\$1,500	\$2,000	\$2,500

MINTERRORNEWS™

Exclusive Discounts

Good for purchases on-line, eBay and at coin shows!

alscoins.com



\$10 off a purchase of a mint error valued at \$100 or more from Al's Coins.

Offer valid on purchases made from alscoins.com, eBay and at coin shows. This offer is good for any purchase made in the year 2005. One coupon per purchase. This coupon can not be used in conjunction with any other offer.

errorcointrader.com



\$20 off a purchase of a mint error valued at \$200 or more from Error Coin Trader.

Offer valid on purchases made from errorcointrader.com, eBay and at coin shows. This offer is good for any purchase made in the year 2005. One coupon per purchase. This coupon can not be used in conjunction with any other offer.

mikebyers.com



\$250 off a purchase of a mint error valued at \$2,500 or more from Mike Byers.

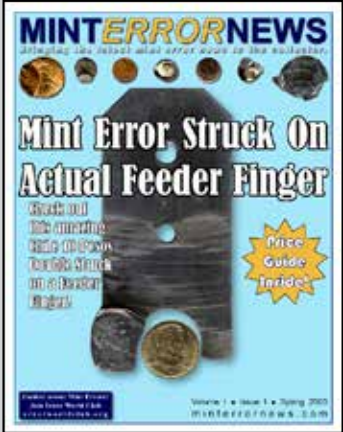
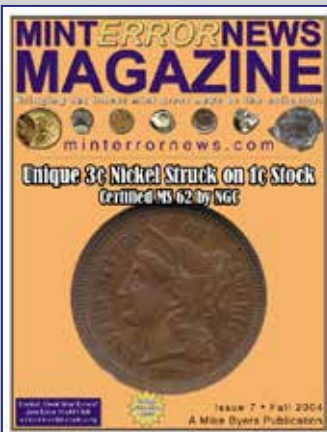
Offer valid on purchases made from mikebyers.com, eBay and at coin shows. This offer is good for any purchase made in the year 2005. One coupon per purchase. This coupon can not be used in conjunction with any other offer.

MINT ERROR NEWS MAGAZINE

Bringing the latest mint error news to the collector.

Issues of Mint Error News Magazine are available for you to read online at: **minterrornews.com**

Mike Byers is the Publisher and Editor of Mint Error News Magazine



Visit www.HeritageCoin.com for your
ERROR COIN RESEARCH
FREE MEMBERSHIP!



Visit the HeritageCoin.com
 website today
 Easy to join
 Free membership
 Significant research tools
 Easy to bid
 Easy to buy
 Winner of the
 NLG's Best Commercial
 Website Award!

These are only a sample of the thousands of error coins Heritage has handled. Consign your error coins today to the next Heritage Sale.

Look up these error coins in our Permanent Auction Archives for descriptions and full-color, enlargeable images:

- A. 2003 ANA National Money Show, lot 6963
 1919 Quarter
 Struck 50% Off Center
 XF45 PCGS
REALIZED \$15,525
- B. 2002 September Long Beach Sale, lot 9648
 1999 SBA Dollar
 Multiple Strike, Reeded Edge
 MS65 PCGS
REALIZED \$6,900
- C. 2002 New York Sale, lot 7290
 1999 Cent
 Die Cap With Second Coin Bonded
 MS64 Red Uncertified
REALIZED \$920
- D. 2002 February Long Beach Sale, lot 7300
 Undated Struck Through
 Capped Die Indian Cent
 MS64 Brown PCGS
REALIZED \$1,265
- E. 2002 FUN Sale, lot 9040
 1963 Half Dollar
 Split Planchet
 AU58 Uncertified
REALIZED \$1,610
- F. 2001 ANA Sale, lot 8658
 1963 Half Dollar
 Double Struck, Indented by a Cent Planchet
 MS66 PCGS
REALIZED \$20,125
- G. 2001 ANA Sale, lot 8651
 1999-P Dime
 Bonded Strike, Struck More Than 10 Times
 MS64 Uncertified
REALIZED \$2,300
- H. 2001 ANA Sale, lot 8657
 1999 Mated Pair of Georgia Statehood Quarters
 Partial Collar, Indent and Stretch Strike, Indent
 MS64 Uncertified
REALIZED \$2,415
- I. 2001 February Long Beach Sale, lot 7497
 1912 Quarter Eagle
 Struck 5% Off Center
 MS64 NGC
REALIZED \$4,370

America's #1 Numismatic Auctioneer
HERITAGE
 Numismatic Auctions, Inc.



Heritage Plaza, 100 Highland Park Village, 2nd Floor • Dallas, Texas 75205-2788
 1-800-US COINS (800-872-6467) • 214-528-3500 • FAX: 214-443-8425
www.HeritageCoin.com • e-mail: Bids@HeritageCoin.com
www.CurrencyAuction.com • e-mail: Notes@CurrencyAuction.com



Numismatics ...Today

News, Features and Resources



Home US Coins World Coins Ancients Currency Events Resources



NUMISMATIC NEWS & RESOURCES

The CoinLink Numismatic Directory will launch with our 10th anniversary edition of CoinLink on January 1, 2005. However, we have started accepting FREE Submissions now.

If you have a web site and want to get listed - Add your Site Here!

New site features include an Articles Database, interactive Polls, a “What’s New” section highlighting everything new in the marketplace, and an expanded news section.

We are committed to providing the latest information with unequaled access to numismatic resources to make your coin collecting more enjoyable. Thanks for being a part of CoinLink.

uspatterns.com

The Society of U.S. Pattern Collectors is dedicated to the study of many of the rarest coins struck at the U.S. Mint: patterns, die trials and experimental pieces.

Saul Teichman's Want List

Saul.Teichman@ey.com

I am looking for the following off-metal errors:

Wartime Nickel on a Copper Cent planchet.
Bicentennial Half on a Cent planchet.
Bicentennial Half on a Dime planchet.
Kennedy Half on a Sacagawea Dollar planchet - if it exists.
Ike Dollar on a Cent planchet.

Ike Dollar on a Nickel 5 Cent planchet.
Ike Dollar on a Dime planchet.
Ike Dollar on a Quarter planchet.
Sacagawea Dollar on a Cent planchet.
Sacagawea Dollar on a Nickel planchet.
Sacagawea Dollar on a Dime planchet - if it exists.

A Partial Brockage, Double Struck, Partial Collar Bust Dime with UNITED STATES spelled UNIAMERIATES

by Henry Hilgard

This is a very unusual 1835 bust dime. The obverse shows an indentation (brockage) from an already-struck bust dime at the 7:30 clock position.

exactly where the letters TED ST of UNITED STATES ought to be, creating the composite word UNIAMERIATES.



On the reverse, directly behind this indentation, the letters AMERI from the reverse die are situated

And finally the edge ("third side") of the coin displays a partial collar in that there is a blank area of the edge

toward the obverse side, with full normal edge reeding around the edge toward the reverse side. So how can we explain these unusual features?

First of all, it is clear that the coin has been struck twice. The first strike was well centered and created most of the detail of the coin. The second strike affected only the indented region of the obverse and the unusual AMERI area of the reverse. The second strike occurred after this coin had rotated approximately 135 degrees but continued to sit on the reverse die. The second strike imparted the letters AMERI into the reverse of the coin where TED ST of UNITED STATES had been before. Evidence of both strikes can be seen together underneath the base of the A in AMERI from the second strike, where the base of the T in UNITED from the first strike is still present.



During the second strike there were 2 coins in the coining chamber at once: this coin and a previously struck coin that overlapped the obverse of this coin at the indented area. We know that the overlapping coin was previously struck because it left an arc of reeding around the indented area as well as some signs of

lettering from its design. When the force of the second strike hit the 2 overlapping coins, the obverse of this coin became indented and the reverse was thrust onto the AMERI area of the reverse die.

The edge may provide a clue as to the sequence of events that gave rise to this piece. We know that this dime was struck twice and yet the edge has only a partial collar. That means that the collar functioned partially during one strike and did not function at all during the other.

Here's a possible scenario to account for how this coin came into existence. During the first strike the collar came up only part way and the ejection mechanism malfunctioned as well. That accounts for the partial collar on this coin and for the coin staying inside the coining chamber. A similar malfunction had affected the coin struck just before this coin, so that it too stayed in the coining chamber where it overlapped this coin and was then struck against it. During the second strike the collar could not come up around this coin at all because it had already been expanded to full inside-the-collar size by the first strike. Hence no reeding was imparted to the coin during the second strike.

It is exciting to contemplate a bust silver coin that possesses, as this one does, 3 different error features, one on each side of the coin (partial brockage on the obverse, double striking on the reverse, partial collar on the edge). Even more remarkable, these error features were simply left "as is" on this coin, whereas most other early error bust silver coins were put back into the screw press, probably by hand, and struck again to try to hide their error features. This one escaped that fate. I would love to hear of others like it if they're out there!

Comments may be directed to hhilgard@aol.com.

Canadian Mint Error

This is an incredible and unique Canadian mint error. 1978 Cent Dies were struck multiple times over an Olympic 1976 Commemorative \$10 that was dated 1974. Although many dramatic and unusual Canadian errors surfaced during the 1970's, this is the most dramatic and spectacular piece that I have ever seen.



1923-S Peace Dollar Die Trial Struck 5% Off-Center

This is a spectacular Peace Dollar major mint error. It was struck as a die trial adjustment strike. It was also out of the collar and is 5% off-center. There are only four known Peace Dollar die trials, also referred to as die adjustment strikes. All major Peace Dollar errors are extremely rare.



U.S. Coins - Weights & Specifications


by Fred Weinberg (fredweinberg.com)

Denomination	Issue Date	Weight in Grains	Tolerance in Grains	Die (mm)	Thick (mm)	S.G.	Composition
Half Cent	1793-1795	104		23.5		8.92	Pure Copper
	1796-1857	84		23.5		8.92	Pure Copper
Large Cent	1793-1795	208		26-28		8.92	Pure Copper
	1796-1857	168		29		8.92	Pure Copper
Small Cent	1866-1864	72	2	19.3	2.2	8.92	88 Cu, 12 Ni
	1864-1942	48	2	19.05	2.2	8.84	95 Cu, 5 tin/zinc
	1943	42.5	2	19.05	1.575	7.8	Zinc coated steel
	1944-1946	48	2	19.05	1.575	8.86	70 Cu, 30 zinc
	1947-1962	48	2	19.05	1.575	8.84	95 Cu, 5 tin/zinc
	1963-1982	48	2	19.05	1.575	8.86	95 Cu, 5 zinc
	1982-Date	38.58		19.05	1.575	7.17	Copper Plated Zinc
	Two Cent	1864-1873	96		23		8.84
3¢ Nickel	1865-1889	30		17.9		8.92	75 Cu, 25 Ni
3¢ Silver	1851-1853	12.375		14		10.11	75 Ag, 25 Cu
	1854-1873	11.52		14		10.34	90 Ag, 10 Cu
Five Cent	1866-1883	77.16	3	20.5	1.981	8.92	75 Cu, 25 Ni
	1883-1942	77.16		21.21	1.989	8.92	75 Cu, 25 Ni
	1942-1945	77.16	3	21.21	1.981	9.32	35 Ag, 56 Cu, 9 Mg
	1946-Date	77.16	3	21.21	1.981	8.92	74 Cu, 25 Ni
Half Dime	1794-1805	20.8		16.5	.7	10.32	90 Ag, 10 Cu
	1829-1837	20.8		15.5		10.32	90 Ag, 10 Cu
	1829-1837 ?	20		15.5		10.34	90 Ag, 10 Cu
	1853-1873	19.2		15.5		10.34	90 Ag, 10 Cu
	Dime	1796-1828	41.6		18.8		10.32
Dime	1828-1837	41.6		17.9		10.32	90 Ag, 10 Cu
	1837-1853	41.25	1.5	17.9	1.346	10.34	90 Ag, 10 Cu
	1853-1873	38.4	1.5	17.9	1.346	10.34	90 Ag, 10 Cu
	1873-1964	38.58	1.5	17.9		10.34	90 Ag, 10 Cu
	1965-Date	35		17.9		8.92	75 Cu, 25 Ni on Cu core
	Twenty Cent	1875-1878	77.16		22.5		10.34
Quarter	1796-1828	104		27		10.32	89 Ag, 11 Cu
	1831-1839	104		24.3			90 Ag, 10 Cu
	1837-1853	103.12	3	24.26		10.34	90 Ag, 10 Cu
	1853-1873	96	3	24.26		10.34	90 Ag, 10 Cu
	1873-1964	96.45	3	24.26	1.701	10.34	90 Ag, 10 Cu
	1965-Date	87.5	3	24.26	1.701	8.95	75 Cu, 25 Ni on Cu
	1976 (40%)	88.74	3	24.26		9.53	80 Cu, 20 Ag on 20 Ag, 80 Cu core
Half Dollar	1794-1836	208		32.5	1.75	10.32	89 Ag, 11 Cu
	1836-1853	206.25	4	30.6	1.75	10.34	90 Ag, 10 Cu
	1853-1873	192	4	30.6	1.75	10.34	90 Ag, 10 Cu
	1873-1964	192.9	4	30.6	2.184	10.34	90 Ag, 10 Cu
	1965-1970	177.5	4	30.6	2.184	9.53	80 Ag, 20 Cu, 20 Ag core
	1971-Date	175		30.6	2.184	8.92	75 Cu, 25 Ni on Cu
	1976 (40%)	177.47	6	30.6		9.53	80 Ag, 20 Cu on 20 Ag, 80 Cu core
Silver Dollar	1794-1803	416		39-40		10.32	89 Ag, 11 Cu
	1840-1935	412	6	38.1	2.896	10.34	90 Ag, 10 Cu
Ike \$1-Clad	1971-1978	350		38.1		8.92	75 Cu, 25 Ni on Cu core
Ike \$1-Silver	1971-1976	379.5		38.1		9.53	80 Ag, 20 Cu on 20 Ag, 80 Cu core
Trade Dollar	1873-1885	420		38.1		10.34	90 Ag, 10 Cu
SBA Dollar	1979-1981	125	6	26.5		8.92	75 Cu, 25 Ni on Cu core
Commem Dollar	1983-1988	412.5		38.1		10.34	
Am. Eagle \$1	1986-Date	479.9		40.6			99.93 Ag, .07 Cu
SBA Dollar	1999						
Sacagawea \$1	2000						

Denomination	Issue Date	Weight in Grains	Tolerance in Grains	Die (mm)	Thick (mm)	S.G.	Composition
Gold Dollar T-1	1849-1854	25.8	0.25	13		17.16	900 Au, 100 Cu
Gold Dollar T-2	1854-1856	25.8	0.25	14.86		17.16	900 Au, 100 Cu
Gold Dollar T-3	1856-1889	25.8	0.25	14.86		17.16	900 Au, 100 Cu
\$2.5 Gold	1796-1808	67.5	0.25	20		17.45	917 Au, 83 Cu
	1821-1827	67.5	0.25	18.5		17.14	917 Au, 83 Cu
	1829-1834	67.5		18.2		17.45	917 Au, 83 Cu
	1834-1839	64.5		18.2		17.14	900 Au, 100 Cu
	1840-1929	64.5	.25	18		17.16	900 Au, 100 Cu
\$3 Gold	1854-1889	77.4	.25	20.63		17.16	900 Au, 100 Cu
\$5 Gold	1795-1829	135	.25	25		17.45	916 Au, 84 Cu
	1829-1834	135		22.5		17.45	916 Au, 84 Cu
	1834-1838	129	.25	22.5		17.14	899 Au, 101 Cu
	1839-1840	129		22.5		17.16	900 Au, 100 Cu
	1840-1929	129	.25	21.6		17.16	900 Au, 100 Cu
Commem Gold	1986-Date	129		21.6		17.6	
Am. Eagle \$5	1986-Date	52.35		16.5			91.67 Au, 390 Ag, 5.3390 Cu
\$10 Gold	1795-1804	270	.5	33	33	17.45	917 Au, 83 Cu
	1838-1933	258	.5	27		17.16	900 Au, 100 Cu
Olympic	1984	258		27			900 Au, 100 Cu
Am. Eagle \$10	1986-Date	130.9		22			91.67 Au, 390 Ag, 5.3390 Cu
\$20 Gold	1850-1933	516	.5	34	2.6	17.16	900 Au, 100 Cu
Am. Eagle \$25	1986-Date	261.8		27			91.67 Au, 390 Ag, 5.3390 Cu
Am. Eagle \$50	1986-Date	523.6		32.7			

Fred Weinberg's Error Coin Price List

fredweinberg.com



Fred Weinberg & Co.

Member: Professional Numismatists Guild; Professional Coin Grading Service; Industry Council for Tangible Assets.

WHOLESALE PRICE LIST OF MAJOR MINT ERROR COINS & CURRENCY MARCH 2005

We are proud to present our first Price List of 2005. We have added over 100 new "Raw" Errors (pages 1-3) and over 225 Certified Errors (starting on page 7). New listings include over a dozen Seated Liberty Dimes and Barber Dimes Off-Center! (On Page 10) We have reduced the prices on about 75% of the unsorted coins from our last November list.

We have purchased two new groups of dramatic Currency Errors-They are illustrated on our website, and a hard copy of the listing can be emailed, faxed, or sent small mail on request. We also have a separate list of over 100 States Quarters Clipped planchet that can also be sent upon request. Listed on our website for the first time is our inventory of U.S. Mint Coinage dies, both cancelled and defaced types. Scans available upon request. The Die inventory is on page 6 of this list.

You can order new copies of the Error Coin Encyclopedia, 4th Edition available at \$35 delivered. (Hardbound, 500 pages)

We now accept PayPal for all your purchases from our list and/or website. Just go to the PayPal website: www.PayPal.com and follow the instructions. Please call or email to verify availability before making your payment thru PayPal.

Remember we pay for all Postage and Insurance fees, including the heavy Dies that are listed on page 6.

NOTE: The PCGS/NGC Certified section of better Major Error coins starts on page 7.

Abbreviations Used NOTE: Clip %'s are by actual weight, not appearance (most clips "look larger" than % of clip).
 DBN=Die Struck Bush Yields, refers to a DB's coin's original strike; FO=Flip-Over; DS=Double Strike; BS=Blindstrike; FS=Full Strike; PB=Full Band; FBL=Full Bull Lines; HD=Rad. R=Reeded & Broken; FL=Proof-Like; CCW=Counter Clockwise; DAS=Die Adjustment Strike

MAJOR MINT ERROR PRICE LIST OF U.S. COINS		March 2005	
1835 Classic Head Half Cent	\$115	1927 Lincoln Cent	\$30
5% Clipped planchet @ 100 with Blakesley Effect. VF.		4% Clipped planchet @ 9:00. UNC.	
1838 Coronet Large Cent	\$95	1940 Lincoln Cent	\$40
150 Degree Rotated Reverse (30-40 Known). VG+		7% Straight End Clip. Very CH. Original B.U.	
1839 Coronet Large Cent	\$95	1941 Lincoln Cent	\$40
60 Degree Rotated Reverse (First 45 Degree reported). Fine+		Very nice BS on T-I plan. Choc. Brown UNC. (Ex-Lorraine John)	
1842 Braided Hair Large Cent	\$175	1942 Steel Cent	\$50
105 Degree Rotated Reverse (First 105 Degree reported). VF+		2% Clipped planchet @ 9:30. Very CH. Original B.U.	
1854 Braided Hair Large Cent	\$85	1943 Steel Cent Planchet Strip	\$150
75 Degree Rotated Reverse (2-A) V.F.		3.12" x 3" punched planchet strip for 1943 Steel Cents. At least 16 punched holes on this scarce strip. A great educational item.	
1863 Indian Cent	\$145	1944 Lincoln Cent	\$50
Nice large Broadstrike out of Collar. (Copper/Nickel) VF.		Full Strong Partial Collar. Gem Lustrous B.U. A beauty!!	
1900 Indian Cent	\$30	1944-S Lincoln Cent	\$30
Nice clipped planchet @ 11:00. (Looks 2%). VG.		6% Straight End clip @ 12:00. CH. Original B.U. Very scarce	
1904 Indian Cent	\$135	1945 Lincoln Cent CH. B.U.	\$50
Unusual 5% Double Clipped planchet. Scarce. CH. A.U.		Nice Large Broadstrike out of Collar (Almost Nickel size). (2-A)	
1922-D Lincoln Cent	\$180	1955-S Lincoln Cent UNC	\$60
Clipped planchet @ 1:00. Extremely rare date for clips. VG.		Uncertified Broadstrike which cupped rim. Very scarce Date/Mint	
1924-S Lincoln Cent	\$25	1957 U.S. Proof Set (5 Pc.)	\$375
"Collar Neck"-variety (Die Edge). VG/F		The Proof Dime has a clipped planchet @ 2:00 and is still sealed in the original plastic as issued. Very Rare.	
1934-D Lincoln Cent	\$75		
Nice Broadstrike out of Collar. CH. B.U.			

16311 Ventura Blvd., Suite 1298 • Encino, CA 91436
 (818) 986-3733 • (800) 338-6533 • FAX (818) 986-2153
 Email: Fred@FredWeinberg.com • www.FredWeinberg.com

1891 \$5 Triple Struck Proof 64 NGC Mint Error Offered in Heritage Long Beach Signature Sale



From the Heritage Auction:

1891 \$5 --Triple Struck--PR64 Ultra Cameo NGC. This is an amazing Proof half eagle that was triple struck with rotation between strikes on the reverse. The obverse does not show any evidence of the extra impressions from the die. The first and second impression of the design on the reverse are evident in a counterclockwise position relative to the third impression. In addition to the importance of this example from the extra strikes, it is also a rarity, one of just 53 examples coined in Proof format. Further, the 1891 half eagle is also a lower mintage issue in business strike, meaning that the overall rarity is an important factor when considering the demand of this issue. Different sources suggest disparaging survival rates for this issue. In his Complete Encyclopedia, Walter Breen suggested that about 25 to 30 different Proofs of this issue survive, representing about 60% of the recorded mintage. Including resubmissions, NGC and PCGS have combined to certify 45 examples. Perhaps this population total does fall in line with the Breen survival estimate. At Heritage, a check of our Auction Archives indicates that this is only the second time that we have offered a proof example of this date in all of our sales over the last dozen years. A complete and accurate roster of known examples has not been attempted, to the best of our knowledge, and would be difficult to accomplish. So many of the gold proofs are similar in appearance that plate matching over many years of auction offerings is rendered quite difficult. Of course, the description of this example with its tripled reverse would be unmistakable. We suspect that this particular example, with its extra design impressions, is most likely unique.

The surfaces have light yellow-gold color with mirrored fields and highly lustrous devices. A few light abrasions are visible on each side. There is a small black spot just above Liberty's eyebrow and a couple others on the obverse rim. These minor blemishes limit the grade and keep it from Gem quality. The devices are highly lustrous with frosty light yellow color. A few small lint marks attest to the proof status of this coin. One of these is located just below star 4. The most noticeable evidence of triple striking on the reverse is in the fields around the eagle, especially in the open areas above the eagle and below the motto. Certain of the letters in the motto and denomination are also tripled with this evidence weak but visible. The fields themselves have the wavy or watery appearance so often seen on proof gold coins. This is truly an amazing ultra cameo proof with exceptional eye appeal and a high degree of desirability.

“This is an impressive piece,” said HNAI senior cataloger Mark Borckardt. “This amazing proof half eagle was triple struck with rotation between strikes on the reverse. The obverse, however, does not show any evidence of the extra impressions from the die. The first and second impression of the design on the reverse are evident in a counterclockwise position relative to the third impression.”

Greg Rohan, HNAI president, added, “In addition to the importance of this example from the extra strikes, it is also a rarity. It’s one of just 53 examples in proof format. Further, the 1891 half eagle is also a lower mintage issue in business strike, meaning that the overall rarity is an important factor when considering the demand of this issue.”

He said that census records from both the Professional Coin Grading Service and the Numismatic Guaranty Corp. indicate that only 45 examples of the coin are known to exist.

“Indeed, Heritage has only offered two proof examples of this date in the last dozen years. We suspect that this particular example, with its extra design impressions, is most likely unique, and look forward to spirited bidding on this rare item.”



Ike Dollar Struck on a Dime Planchet

It is estimated that there are only six to eight known Ike Dollars struck on clad Dime blanks. Even through this spectacular mint error does not show a date, it is very well centered and is in choice mint state condition.



Rich Schemmer

specializing in rare error coins for the collector

richerrors.com

Richerrors@aol.com



We Are Strong Error Buyers:

We are ALWAYS looking to BUY better U.S. mint error coins. Whether a single coin or bulk lots, we offer some of the highest prices paid in today's error market. (no doubled dies, mint mark varieties, or other minor or damaged errors, please). We are looking for high-end dramatic error coins for our customers.

For our highest cash offer, simply ship the error coins to us at the address below. Be sure to include a name and a day-time telephone number where we can reach you.

Have that dramatic error you may want to sell? Contact us!!

SUBMIT YOUR ARTICLE TO MINT ERROR NEWS MAGAZINE

Please make sure you have copyrights to any content that you submit. Your article may be subject to revision. If you include images with your article, please use a minimum resolution of 300 DPI.

Please submit all content to:

editor@minterrornews.com

Harry E. Jones

Rare Coins & Currency

Sell Harry Your Mistakes!!

Leading Dealer in Error Currency For Over 30 Years. Buying and Selling the Finest in Error Currency. Especially Want Errors on National Currency. Also Buying Uncut Sheets of Nationals Large and Small.

7379 Pearl Rd.
Cleveland, OH 44130

440-234-3330

LM ANA PNG PCDA



COINLINK™



Numismatic News & Rare Coin Web Site Directory

coinlink.com

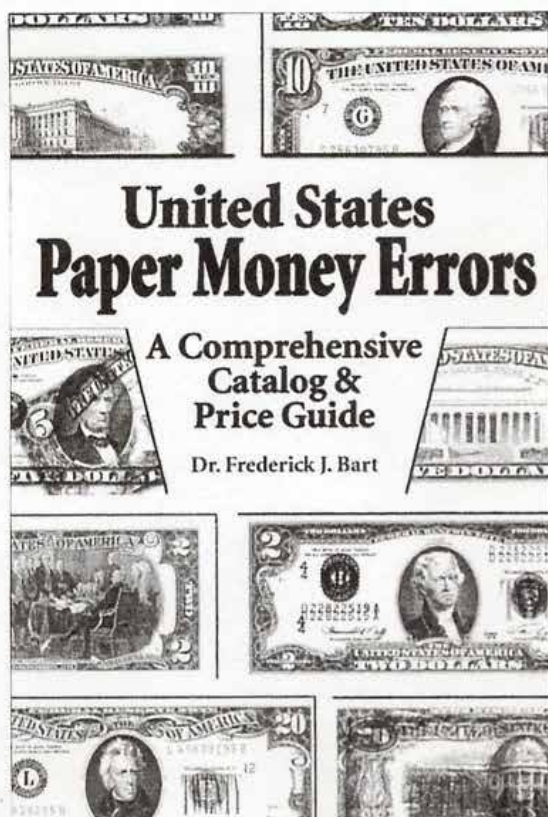
The LONG AWAITED SECOND EDITION of

United States Paper Money Errors: A Comprehensive Catalog & Price Guide

by **FREDERICK J. BART**

foreword by **HARRY E. JONES**

Will be **READY to SHIP** in a **COUPLE** of **WEEKS ...RESERVE YOUR COPY** now
published by **KRAUSE PUBLICATIONS**
available from Krause Publications, their distributors, your supplier, or directly from the author



- **COMPREHENSIVE INFORMATION**
on **US PAPER MONEY ERRORS**
ranging from **DOUBLE DENOMINATIONS** to **INK SMEARS**
- **COMPLETELY RE-WRITTEN**
- **UP-to-DATE PRICE GUIDE**
in **THREE GRADES**
- **550 PHOTOGRAPHS** (b & w) of
SMALL SIZE & LARGE SIZE ERRORS
- **256 PAGES**, 6" x 9", softbound
- **HISTORICAL PHOTOGRAPHS**
- **BEHIND-the-SCENES** peeks at
"INSIGHTS and INCIDENTS"
- **SUITED** for both the **ADVANCED COLLECTOR** and the **BEGINNER**
- **DATA** for the **RESEARCHER, CATALOGUER, and DEALER**

-----ORDER FORM-----

I wish to reserve--and am enclosing payment for--one copy of *United States Paper Money Errors* at \$24.95. My check will not be cashed until the book is ready to ship. I would like the book:

- autographed by the author
 inscribed, as indicated below, and autographed

Please mail the book to:

BART, Inc. ● **PO Box 2** ● **Roseville, MI 48066** ● **586.979.3400** ● BartIncCor@aol.com

Fred Weinberg & Co.

Dealer in Major Mint Error Coins & Currency



fredweinberg.com



BUYING MAJOR ERROR COINS & CURRENCY

If you have a single major mint error coin, either a recent issue or an older type coin, or 1,000 Off-Center Cents, please contact us. We stock over 60,000 Major Mint Error Coins and constantly need to purchase Major Error Coins for our clientele (please note that we do not deal in or buy Die Varieties, Damaged Coins, Doubled Dies, Filled Dies, or Die Cracks).

We do buy Major Mint Errors - such as Off-Center, Off-Metals, Double Strikes, Clad Layers missing, Die Caps, Double Denomination, etc.

Because of the many differences in each Error Coin we request that you send scans of your coin(s) to us for our examination and firm offer.

Postal Correspondence:

Telephone/Fax:

16311 Ventura Blvd.

Phone: (818) 986-3733

Suite #1298

Toll-free: (800) 338-6533

Encino, California 91436

Fax: (818) 986-2153

e-mail: fred@fredweinberg.com

fredweinberg.com

Robert L. Astrich

P.O. Box 981

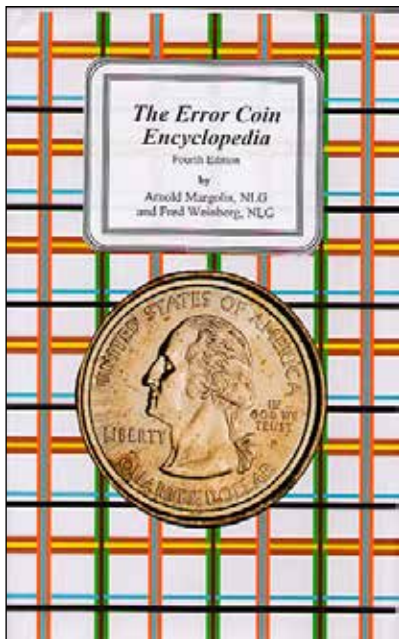
Hempstead, TX 77445

Office: (979) 826-2221 Fax: (979)826-6566

I BUY AND SELL MAJOR ERROR COINS, ALL U.S. COINS & EARLY FOREIGN CROWNS & GOLD, HIGH GRADE CERTIFIED MORGAN & PEACE DOLLARS, U.S. DATED GOLD & HI RELIEFS, EARLY 1936-42 PROOF SETS CERTIFIED & RAW.

I AM A STRONG BUYER OF ORIGINAL EARLY MINT SETS 1947-58, AND PAY STRONG PRICES FOR ORIGINAL ROLLS OF CENTS THRU HALF DOLLARS 1954 & EARLIER. I ALSO BUY ORIGINAL BU DOLLAR ROLLS. I AM A FULL TIME USER OF THE CERTIFIED COIN EXCHANGE AND THE COIN NET SYSTEMS. I AM AN ACTIVE BUYER OF LARGE COIN COLLECTIONS.

ALL TRANSACTIONS WILL REMAIN CONFIDENTIAL.



Entirely rewritten edition. 495 pages.
Hard Cover 4th Edition: \$39.95 postpaid

Available from:

**Arnie Margolis
&
Fred Weinberg**

Silver Towne L.P.

50 years of quality Tradition: Make new friends
but keep the old - one is silver the other is gold.

silvertowne.com

100 GREATEST
U.S. COINS



New Book - 100 Greatest U.S. Coins
by Jeff Garrett and Ron Guth
Order your copy today!
CoinFacts.com

Independent Coin Grading Company

A Company Formed By Some Of The Industry's Top Graders.



KEITH LOVE, FOUNDER AND CEO

Only ICG offers you all this:

ICG's "No-grade, No-Fee" policy. We charge a \$5 processing fee if we "no grade" a coin.

Intercept Shield, Ultimate protection for your collectibles.

\$1 credit for returning our insert tags, (pre 1950 coins) and a 50¢ credit for all 1950 or later coins.

Quick turnaround times to preserve cash flows.

Sonically sealed, tamper-evident, attractive holder with our SECUREGRAM™ hologram system.

And, most important ... expert, consistent grading by the most respected names in the business.



Photo courtesy of mikebyers.com

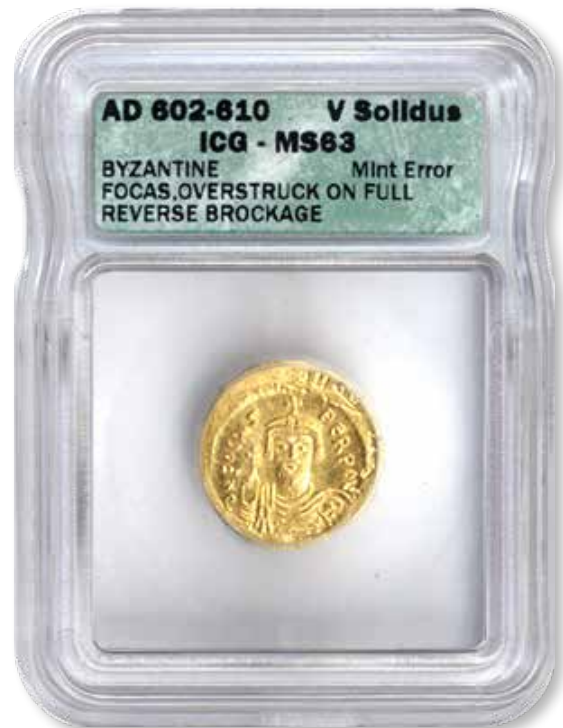


Photo courtesy of mikebyers.com

ICG

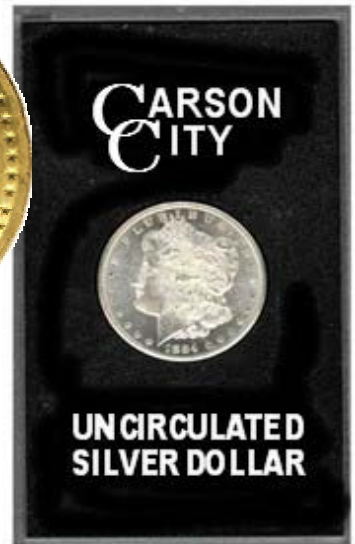
7901 East Belleview Ave., Suite 50
Englewood, CO 80111
877-221-4424 (Toll Free) - 303-221-5524 (Fax)

H
O
M
E
O
F
T
H
E
A
M
A
Z
I
N
G
B
R
O
K
E
N
C
C

NORTHERN NEVADA COIN

www.brokencc.com

*WE BUY & SELL
RARE COINS.
VISIT US ON THE
WEB TO VIEW
OUR
EVER-CHANGING
INVENTORY*



**3655 B RESERCH WAY
CARSON CITY, NV 89706**

1-888-836-8DOLLAR

1-888-836-5527

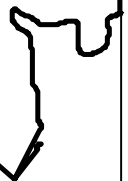
1-775-884-1660



MEMBER



MEMBER
Northern Nevada,
Inc.



ERROR WORLD

Join the *hottest*
Error Coin Club on the Net!

e r r o r w o r l d c l u b . o r g

The Error World on-line coin club exists for the purpose of advancing the knowledge and the field of error coin collecting.

Error World is dedicated to the promotion, discussion and dissemination of facts and ideas about error coinage, both domestic and world-wide.

Error World exists as a vehicle to bring collectors of both foreign and domestic error coinage together in a professional and relaxed atmosphere where they can exchange information, display photos and engage in lively debate about error coinage.

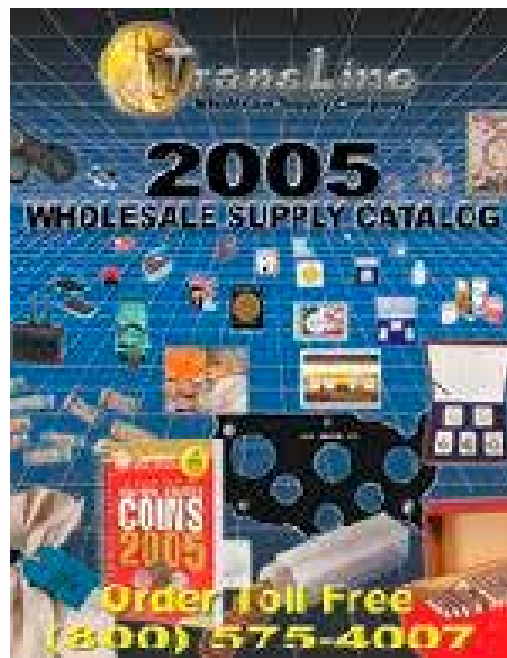
Error World is a non-profit organization with all revenues being put back into the club to provide improved services to the members of the club.

Error World will, from time to time, accept contributions from designated Patrons in the form of contest prizes, and/or cash to be used to defray club expenses.

Error World will, from time to time, attempt to obtain sponsors from the numismatic field who will bring price saving offers to Error World members.

Transline Wholesale Supply Company

Wholesale Only 1-800-575-4007



Bart Crane

translinesupply.com

CALL TOLL FREE: (800) 575-4007

Business Hours

Monday - Friday: 7:30AM - 5:30PM PST



JIM'S COINS & STAMPS
 702 N. Midvale Blvd. B-2
 Madison, WI 53705
 (608) 233-2118

ERROR AUCTIONS

Six per year for 22 years!

YR. Subs. \$8.00, Sample \$2.50

Free Download: www.jimscoins.net

Len Roosmalen



James Essence

Jim's Coins Error Auctions

MAIL BID SALE #8

CLOSES MAY 30, 2005

- 1) SEND ALL BIDS TO: JIM'S COINS, 702 N. MIDVALE BLVD. B-2, MADISON, WI 53705, OR FAX #608-233-2118, OR PHONE 608-233-2118, OR EMAIL: jimcoins@sbcglobal.net
- 2) THE HIGHEST BIDDER ACKNOWLEDGED BY THE AUCTIONEER SHALL BE THE BUYER. THE AUCTIONEER RESERVES THE RIGHT TO REJECT ANY BID OR WITHDRAW ANY LOT FROM THE SALE. BIDDERS ARE RESPONSIBLE FOR THEIR OWN ERRORS, SO DOUBLE CHECK YOUR BIDS. THE FIRST POSTMARK WINS IN CASE OF A TIE BID.
- 3) ALL SALES ARE FOR CASH AND ARE PAYABLE IMMEDIATELY UPON RECEIPT OF THE INVOICE
- 4) AUCTIONS ARE OPEN TO ALL AND NO DEPOSIT IS REQUIRED OR DESIRED.
- 5) NO UNLIMITED BIDS ARE ACCEPTED. WINNING BIDDERS WILL BE AWARDED LOT AT THEIR BID OR AT A 10% ADVANCE OVER THE SECOND HIGHEST BID, WHICHEVER IS LOWER. IF NO OTHER BIDS ARE RECEIVED FOR A LOT, THE BIDDER WILL BE AWARDED THE LOT AT THE MINIMUM BID, OR ESTIMATE IF NO MINIMUM IS GIVEN.
- 6) ALL ITEMS ARE GUARANTEED GENUINE. BIDDERS MAY RETURN ANY ITEM NOT AS DESCRIBED.
- 7) BID EARLY AND BID OFTEN. THANKS! -LEN & JIM

1	1885	DOLL	WOW! PARTS OF 3 "STAPLES" STRUCK INTO REV AT 6 & 12:00, LITE TONE 2-5:00 "STAPLES" SHOW GREAT PCGS	MS62	MB	\$1,750.00
2	1921 S	DOLL	BROADSTRUCK OUT OF COLLAR NOT MAKING THESE ANY MORE GRAB QUICK PCGS	EF45	MB	\$325.00
3	1977 D	DOLL	RETAINED ROLLED IN MAGNETIC METAL OBV 8:30 TO 12:00 BIGGER PIECE AT 9:30 NCS UNC DETAILS	UNC	MB	\$65.00
4	1971 D	DOLL	DOUBLE STRUCK, 2ND 95% O/C 2:00 UNIFACE OBV NGC	MS63	MB	\$395.00
5	1977 D	DOLL	15% OFF CENTER AT 1:00 NICE EXAMPLE COIN NGC	MS63	MB	\$435.00
6	1973 S	DOLL	SILVER< STRUCK THRU HAIRS OBV BETWEEN BACK OF HEAD & RIM, DIFFERENT? PCGS	MS66	MB	\$450.00
7	1979 D	DOLL	REV CALD LAYER OFF BEFORE STRUCK BRIGHT RED NEAT PCGS	MS65	MB	\$395.00
8	1979 D	DOLL	OBV CLAD LAYER OFF BEFORE STRUCK R&B PCGS	MS64	MB	\$340.00
9	1999 P	DOLL	LARGE BROADSTRUCK ON TYPE 1 PLANCHET SLIGHTLY OFF CENTER SUPER NICE ANACS	MS60	MB	\$130.00
10	N.D.	DOLL	S.B.A, 80% OFF CENTER 6:00 WITH A CHAIN STRIKE EDGE NGC	MS65	MB	\$350.00
11	1999 P	DOLL	PARTIAL COLLAR STRIKE NICE BRIGHT COIN PCGS	MS64	MB	\$18.00
12	1944	HALF	LARGE STRUCK THRU AREA MOST OF CENTER OF WALKER HALF NEAT NGC	MS65	MB	\$475.00
13	1943	HALF	MINOR PLANCHET CRACK UNDER 3 IN DATE ANACS	MS64	MB	\$59.00
14	N.D.	HALF	KENNEDY, STRUCK ON NICKEL PLANCHET NICELY CENTER SO FULL HEAD SHOWS ANACS	MS64	MB	\$1,295.00
15	N.D.	HALF	KENNEDY, DIE ADJUSTMENT STRIKE IN SILVER SOME REALLY WEAK AREAS PCGS	AU50	MB	\$175.00
16	1976 D	QUAR	BICENTENNIAL, DOUBLE STRUCK, 2ND 60% OFF CENTER 8:00 NEAT & SCARCE PCGS	AU58	MB	\$695.00

17	1972 D	QUAR	STRUCK ON NICKEL PLANCHET NICE EXAMPLE ANACS	MS64	MB	\$185.00
18	1964	QUAR	ON 10% THIN PLANCHET 80 GRAINS FOREIGN?? PCGS	AU58	MB	\$45.00
19	1993 D	QUAR	ON ELLIPTICAL PLANCHET CUT OFF THRU LIBERTY TO 4:00 NEAT PCGS	MS63	MB	\$95.00
20	1999 P	QUAR	PENN, 27% STRAIGHT CLIP 5:00 TO 9:30 SUPER PCGS	MS66	MB	\$225.00
21	2000 P	QUAR	N.H, STRUCK ON ELLIPTICAL CLIPPED PLANCHET, SLIGHTLY RAGGED EDGE 5:00 BEFORE STRK PCGS	MS66	MB	\$260.00
22	2004 P	QUAR	FLORIDA, STRUCK ON NICKEL PLANCHET RARE DATE & STATE LOT OF LUSTER ANACS	MS65	MB	\$1,995.00
23	1999 P	QUAR	GA, DOUBLE STRUCK, 2ND 55% O/C 10:30, (HOLDER SAYS 35% O/C, DUBL ERROR?) UNIF REV NGC	MS64	MB	\$475.00
24	1997 D	DIME	STRUCK ON ELLIPTICAL CLIP PCGS	MS65	MB	\$75.00
25	1957	DIME	STRUCK THRU 5X10mm PIECE SCRAPE REV 5:30 INDENT SHOWS TOP OF HEAD & EAR IN INDENT FROM SCRAP NGC	MS63	MB	\$199.00
26	1897	NICK	STRUCK ON SPLIT BEFORE STRK PLANCHET WEIGHT 2.5 GRMS ICG	VF30	MB	\$115.00
27	1896	NICK	12% OFF CENTER 12:30 NEAT & OLD PCGS	AU50	MB	\$595.00
28	1920	NICK	35% OFF CENTER 3:00 NEAT OLD BUFFALO PCGS	VF25	MB	\$795.00
29	2000 D	NICK	WOWSER X 2, DOUBLE DENOMINATION ON STRUCK CENT THEN DOUBLE STRUCK 90% O/C 12:00 DON'T REMEMBER ANOTHER?? PCGS	MS64	MB	\$1,495.00
30	N.D.S	NICK	WAR TYPE, STRUCK ON DIME PLANCHET, NO DATE BUT BIG MINT MARK REV P/L & TONED ANACS	AU50	MB	\$1,595.00
31	1944 P	NICK	STRUCK ON THICK PLANCHET 91 GRAINS FULL STEPS PCGS	MS63	MB	\$400.00
32	N.D.	NICK	STRUCK ON SILVER DIME PLANCHET NICELY CENTERED & BRIGHT SMALL SKID REV PCGS	MS62	MB	\$495.00
33	1996 P	NICK	50% CURVED CLIP AT 10:30 LIGHT GOLDEN TONING SUPER	MS66	MB	\$95.00
34	1945 P	NICK	STRUCK ON ELLIPTICAL CLIPPED PLANCHET NICE RAINBOW LIKE TONING PCGS	AU58	MB	\$395.00
35	1970 S	NICK	60% OFF CENTER 10:00 WITH LARGE STRAIGHT CHAIN EDGE ANACS	MS63	MB	\$95.00
36	1858	SIL3c	STRUCK 5% OFF CENTER 7:00 PRETTY TOUGH ERROR PCGS	VF30	MB	\$695.00
37	1865	NIK3c	STRUCK 20% OFF CENTER 6:00 NEAT LOOKS UNC PCGS	AU58	MB	\$850.00
38	1857	CENT	STRUCK ON THIN PLANCHET 69 GRAINS NICE & RARE PCGS	MS63	MB	\$750.00
39	1945	CENT	STRUCK ON NETHERLANDS EAST INDIES 1/2c PLANCHET BRN NGC	AU55	MB	\$498.00
40	1965	CENT	STRUCK ON DIME PLANCHET PCGS	MS64	MB	\$400.00
41	1942	CENT	STRUCK ON BRASS PLANCHET 45 GRAINS PCGS	VF35	MB	\$120.00
42	1991	CENT	DOUBLE STRUCK IN COLLAR FIRST STRIKE ROTATED 30° CCW SEE TWO DATES RED PCI	MS64	MB	\$65.00
43	1958 D	CENT	STRUCK ON WOWSERIT CRACKED PLANCHET NEAT NTC	XF40	MB	\$65.00
44	1998	CENT	DUBL STRK, 2ND 35% OFF CENTER 12:00 RED COUPLE ZINC SPOTS SHOW THRU P/L RED NGC	MS63	MB	\$85.00
45	1973	CENT	STRUCK IRE OBV (STAPLE LIKE) ACROSS NECK TO 6:00 NICE EXAMPLE RED PCGS	MS63	MB	\$155.00

See jimscoins.net for full auction. Thank you!

MINTERRORNEWS™ MUSEUM

Enjoy viewing the major mint errors in our museum. These are exciting and dramatic examples of major mint errors that we wanted to share with our readers.

1964 Kennedy Half Dollar
Struck on a Silver Quarter Planchet
PCGS MS 64



SBA Dollar
Struck 50% Off-Center
PCGS MS 62



1904 Indian Cent Double Struck
Second Strike 30% Off-Center
NGC XF 45 Brown



1865 Indian Cent Double Struck
2nd Strike 85% Off-Center
PCGS AU 50



1903 Proof Indian Cent
Curved Clip @ 6:00
NGC PF 64 Red



1920 Buffalo Nickel
Struck 30% Off-Center
PCGS MS 64



1942/1 Mercury Dime
Planchet Clip at K-5:30
ICG EF 45



1879 Morgan Dollar
Wire Struck in Reverse
PCGS AU 50



1942 Lincoln Cent
Struck on a 80% Cu 17% Zn Planchet
NGC XF 40



1945-S War Time Nickel
Struck on a Foreign Planchet
NGC AU 55



1888 Liberty Nickel
Struck on a Foreign Planchet
ANACS AU 50



1964-D Kennedy Half Dollar
Struck on a Silver Quarter Planchet
PCGS MS 63



1898 Indian Cent Double Struck
2nd Strike 85% Off-Center
NGC MS 66 Brown



1916-D Buffalo Nickel
Struck Off-Center
ANACS MS 64



1945 Walking Liberty Half Dollar
Broadstruck
PCGS AU 58



Philippine 1 Piso
Struck Over Struck U.S. Quarter
PCGS MS 64



1968-S Jefferson Nickel
Struck on Cent Planchet
PCGS MS 65



1968-S Lincoln Cent
Struck on Clad Dime Planchet
PCGS MS 64



1986 \$50 Gold
Partial Collar
ANACS MS 65



2000-P Sacagawea Dollar
Double Denomination on MD Quarter
ANACS MS 65



1964 Washington Quarter
Double Denomination on Struck Nickel
PCGS AU 58



1979-P SBA Dollar
Struck on a Quarter Planchet
PCGS MS 64



Frequently Asked Questions

What are indents?



An indent error occurs when two blanks are fed inadvertently into the same collar, with one blank partly overlaying on top of the other. When the hammer die strikes this combination, the upper blank will be forced into the lower blank, creating a depression which is shaped similar to the upper blank. A scarce type of indent occurs when a blank intended for one denomination lands on top of a blank from a different denomination.

Frequently Asked Questions

What are mules?



A mule occurs when a coin is produced with mismatched dies. In some countries, the Mints use dies for different denominations with the same dimensions. In these instances, mules have been known to exist and are not that rare.

An example would be a New Zealand/Bahama mule where thousands were struck and they are worth \$50 each. The obverse of a Bahama 5 Cent piece was muled with the reverse of a New Zealand 2 Cent piece.

On the other end of the spectrum are the extremely rare mules including a few from the United States. An example would be a mule with a Sacagawea Dollar reverse and a State Quarter obverse.

The photo shown above is a rare example of a Euro 50 Cent reverse that was muled with a Euro 20 Cent reverse. This rare piece is also a “two-tailed” coin because both dies were reverse designs and both are denominations of Euro coinage.

Upcoming Coin Shows



Visit Mike Byers at his table.

Jan. 12-16	FUN Show
Feb. 23-26	Long Beach Coin & Collectible Expo
March 4-6	Las Vegas
March 31-April 3	Santa Clara Coin Expo
April 8-10	ANA's National Money Show
May 5-8	Central States
June 1-4	Long Beach Coin & Collectible Expo
July 21-23	Santa Clara Coin Expo
July 26-31	ANA World's Fair of Money
Sept. 21-24	Long Beach Coin & Collectible Expo
Oct. 27-29	Las Vegas Coin Expo
Nov. 16-19	Santa Clara Coin Expo

Karl Stephens

ANA LM 3112

Dealer in World Coins, Patterns & Mint Errors

P.O. Box 3038, Fallbrook, CA 92088
760-731-6138 • FAX: 760-731-9132
www.karlstephensinc.com

MINTERRORNEWS MAGAZINE

Coming in Issue 12

1989-D Lincoln Cent Double Struck on Bronze Planchet



Wanted To Buy: Buffalo Nickel Errors

Large laminations, straight clips, curved clips, off centers, broadstrikes or cuds on any of the following dates: 1925-D, 1926, 1926-D, 1927-S, 1928-D, 1935-D, 1937-S.

Also:

Off centers	1930, 1931-S, 1938-D
Off centers	55% & 70%
Off centers	55% to 75% at 9:00
Misaligned die	10% or more
Reverse cuds	K-3, K-8, K-10
Curved Clips	Obverse - K-1, K-7, K-12

Please describe & price.

Bob Entlich
c/o Stacks
123 W. 57th St.
New York, NY 10019

BYERS NUMISMATIC CORP

MIKEBYERS.COM



The Largest Dealer of the World's Rarest Mint Errors™

U.S. & WORLD MAJOR MINT ERRORS • DIE TRIALS • NUMISMATIC RARITIES



We handle the world's finest Major Mint Errors and Numismatic Rarities. Our premier MULTI-MILLION DOLLAR INVENTORY includes only the best, museum quality, world class and exotic U.S. and World Major Mint Errors and Die Trials. Many of our purchases are immediately sold to our customers, and don't even reach our website to be sold, or eBay to be auctioned. Send us your want list, we may have what you're looking for.

MIKE BYERS

P.O. Box 5090, San Clemente, CA 92674

Office: 949-276-7072 • Fax: 949-276-7073

Fed Ex Address only: 1001 Avenida Pico #C 612, San Clemente, CA 92673

E-Mail: mike@mikebyers.com • Website Design: sam@mikebyers.com

Mike Byers, Professional Numismatist since 1978

Byers Numismatic Corp. A California Corporation Since 1980

Mike Byers is a consultant to ANACS for Mint Errors

